

The Syracuse Journal

INDEPENDENT.
THURSDAY, DEC. 10, 1908.
Published Every Thursday at Syracuse,
Indiana. One Dollar Per Year.
WALKER & FANCIL, Printers and Publishers
Entered as second-class matter May 4,
1908, at the post office at Syracuse,
Indiana, under the Act of Congress of
March 3, 1879.

BANK STATEMENT.

S. L. KETRING, President.
W. M. SELF, Cashier.
A. A. RASOR, Vice-President.

Report of the condition of the State Bank
of Syracuse, at Syracuse in the State of
Indiana, at the close of its business on
November 27, 1908.

RESOURCES.	
Loans and Discounts	\$84563.25
Overdrafts	524.59
Furniture and Fixtures	1550
Due from Banks and	
Trust Companies	54467.61
Cash on Hand	9554.34
Cash Items	1127.52
Current Expenses	1202.40
Interest Paid	92.67
Total Resources	153082.38

LIABILITIES.	
Capital Stock—paid in	\$25000
Demand Deposits	63962.34
Demand Certificates	62252.50 126214.84
Exchange, Discounts and Interest	1867.54
Total Liabilities	153082.38

State of Indiana,
County of Kosciusko, ss:
I, W. M. Self, Cashier of the State
Bank of Syracuse, do solemnly swear that
the above statement is true.

W. M. SELF.
Subscribed and sworn to before me,
this 2nd day of December 1908.
A. L. CORNELIUS, Notary Public.
My commission expires June 30, 1910.

ELECTRIC CATHARTIC TAB-
LETS 25cts. ZA-MIA Pile Cure
50 cents; EVERGREEN KIDNEY
TABLETS, \$1; ELECTRIC RHU-
MATIC TABLETS, \$3; at either
drug store or at our office over the
Bank. Money refunded if not sat-
isfied. SYRACUSE ELECTRIC
TABLET CO.

Mail in Cornfield.

Two bushels of first-class mail,
most of which had been opened, has
been uncovered by David Holmes
and other hunters on the Holmes
farm near Wakarusa. The opened
letters were all posted in Michigan
towns and were destined to eastern
points. Money orders, checks and
other valuable articles were left in
the letters, the thief apparently
only extracting the money. The
matter has been referred to the
post office department and an in-
spector will be sent to Wakarusa in
hope of unraveling the mystery as
to how the mail was transferred to
this point.

TIPPECANOE

Miss Newel Wright visited last
week with her brother, Grover and
wife.

Ella Kreger and Anna Gilbert
spent last Wednesday with Eliza
Strieby.

Mrs. Wilson visited with her
daughter, Mrs. Jacob Gross, last
Wednesday.

George McCauley attended the
stock show in Chicago last week.

Mrs. Shirl Longacre spent a few
days last week with her parents.

Frank Swihart and Ward Robin-
son was at Cromwell Saturday even-
ing.

Mrs. Vern Bechtel, of Syracuse,
was the guest of Wm. Nice and wife
Sunday.

Jake Kline and Miss Lula White
spent Sunday with Isaac Grady and
family.

Paul Poppenfoose bought a driv-
ing horse last week.

Marion Miller and family spent
Sunday with Frank Bushong and
family.

Shirl Longacre and family moved
into their new house the first of the
week.

Greely Yoder took a load of hogs
to Leesburg.

DISMAL.

Mrs. Della Vorhis and Emory,
spent a few days with her parents,
Olas Price and wife, of near Kim-
mell, last week.

Earl Hire and wife and Guy Ni-
colio visited with Mrs. Anna Grubb
and children Sunday.

"The Messenger Boy" Opera
House Monday.

Ella DeBrular and daughter,
Treva, visited over Sunday at Brim-
field.

Ptallman Vorhis and wife and
Mrs. Vorhis called on Sam Dillon
and family Sunday evening.

Jasper Buchtel and family were
the guests of John Buchtel and fam-
ily Sunday.

Harry Vorhis and family and Mel-
son Bobcock and family called on
Mrs. Anna Grubb Sunday evening.

Rev. Hiel calle on Sam Dillon
and family Sunday.

WAWASEE.

Mrs. Earl Hire and M. S. Elmer
Shook called on Mrs. Ed Knox
Thursday afternoon.

Olas. Launer and family and
Floyd Launer and family spent Sun-
day with Wm. Greider and wife.

H. P. Hilschman and wife enter-
tained guests from Ligonier Sun-
day.

Miss Iva Longfellow called on
Mrs. Lew Hire Thursday afternoon.

Miss Elva Wright, of Elms, visited
with Will Crow and family Sunday.

Watch for the date of the Africa
and Lake Bethel box supper sched-
uled to "come off some time before
the first of the year.

Mr. Jay Gordy, the Lake Bethel
"school marm" is boarding at J. E.
Rarick's this week.

Mrs. Will Crow and Mrs. Lew
Hire were shopping in Goshen Tues-
day.

OSWEGO

Alphens Kerns is the guest of
Wm. Kearns and wife.

Helen Covington who has been
very sick is again able to attend her
school.

Moses Lippincott, wife and daugh-
ter of Leesburg, spent Sunday with
Walter Lippincott and wife.

Ethel Kuhn and Virgie Neibert
were visitors at our school Monday.
Everybody cordially invited to
attend B. Y. P. U. services at this
next Sunday evening.

Wm Parker and wife are visiting
relatives in N. Manchester.

Milt Leantz of Ohio is visiting re-
latives in and near this place.

Wm. and Nettie Lippincott spent
Sat. night and Sunday with Alva
Crowl and wife near Syracuse.

Mrs. Elizabeth Kibler and Dale
Metz are guests of relative in Chi-
cago.

George Hartman went to Swander
Ohio, Monday, where he will visit
for some time.

Yuletide Musings

The joyous time is drawing
nigh, the time of turkey, pudding,
pies, nor do we dream of after
ills, of squills, and pills, and
Christmas bills.

A girl begins to hang up the
mistletoe at about the age when
she stops hanging up her stockings.

A pessimist is a fellow who
wouldn't hang up his stocking
for fear old Santa Claus might
swipe it.

Christmas cigars are not
always puffed up with pride.

There's many a slip 'twixt the
Miss and the mistletoe.

Don't make it too strong.
Many a man has been knocked
out by one good, stiff punch.

Ask a truthful woman what
she enjoys most about Christ-
mas, and she will tell you the
bargain sales afterward.

To sing a rhyme of Christmas
time (that line is but the first of
it), here's hoping you may not
feel blue because you get the
worst of it.

When a child writes a letter
of thanks to Santa Claus, it
should be cherished like a rare
plant. That kid isn't long for
this world.

No Christmas present is so
useless that you can't pass it on
to some one else next year.

Remember that it is better to
give than to receive—the things
you don't want.

Take off the tags. Many a
friendship has been severed by
the price mark on a Christmas
present.

I have often wondered wherein
consisted the wisdom of Solomon
when he had a thousand wives.
I am now convinced that it must
have been in living in the days
before Christmas was celebrated.

It's all right to pity the poor
at this peace-on-earth season,
but it is also well to remember
that sympathy doesn't fill an
empty stomach.

RULES FOR CHRISTMAS GIVING

Give willingly.
Give tactfully.
Put thought into your giving.
Don't consider return gifts.
Never give to others what you
wouldn't want yourself.
The unexpected gift insures a spe-
cial appreciation.
To give ostentatiously is the height
of bad taste.
Give to the sick and the sorrowful if
you would know the true joy of giving.
Never give more than you can af-
ford. Your friends know your circum-
stances as well as you do yourself and
the pleasure of both giving and re-
ceiving is lost.

A Question in Finance.
"Are you good at arithmetic, my
dear?" asked Mr. Perkaskie of his wife.
"I was accounted the very best
arithmetician at school," replied Mrs.
Perkaskie, with a touch of pride in
her voice.
"I have a problem for you."
"State it."
"How can I buy \$50 worth of Christ-
mas presents with \$10 in cash and no
credit?"

Optical Goods at Veirs.

Every One May Know the
Delights of a Perfect Range

Monarch
MALLEABLE
The Stay Satisfactory Range

The MONARCH PAYS for ITSELF

EVERY woman would LIKE to have a perfect range---
one that would turn out beautifully browned loaves of
bread, cakes and pies, baked just as much on one side
as another.

But SOME do without the pleasure because they THINK
they can't afford it.

It's NOT true economy to keep on using that old
range or cook stove---nor to buy a common steel range be-
cause it **costs a little less than a Monarch.**

Buy a MONARCH Malleable Range and It Will Pay Back It's Own Cost

By the use of unbreakable Malleable Iron in place of the brittle cast iron found in the ordi-
nary type of "steel range," the MONARCH is built with every seam practically air tight.
The leakage of air that causes excessive fuel waste is thus done away with so that the Mon-
arch will require but little more than half the fuel needed by a range of the common sort.
With fuel bills cut in two it's easy to see how the Monarch "Pays for Itself." It does better
work too---always.

WE CAN PROVE THESE THINGS TO YOU!

Let Us show you how the Monarch is built---riveted
like a steam boiler.

Let Us show you how the Malleable Iron in Monarch
Ranges will withstand intense heat that would burn
up the grey iron in common ranges

Let Us explain the Duplex Draft.

Let Us demonstrate all of these things and the hun-
dred and one other Monarch features that go to make
up range perfection.

Then You will realize how it is that the Monarch
would do your work with less fuel, less time, less
labor than are now required.

E. E. STRIEBY,

Syracuse, Ind.

Holiday Furniture . .

Largest line of Bookcases, Buffets, Dining Room
Furniture, Rockers, Kitchen Cabinets, in fact all the
latest in Furniture. Spend your Christmas money
for Home Comforts,

Wm. Beckmann

The Fair Emporium AN IDEAL CHRISTMAS SHOP.

Our stock is repleat with
beautiful gifts having that
much sought for individu-
ality often so difficult to
secure.

M C Truesdell

FOR SALE OR EXCHANGE

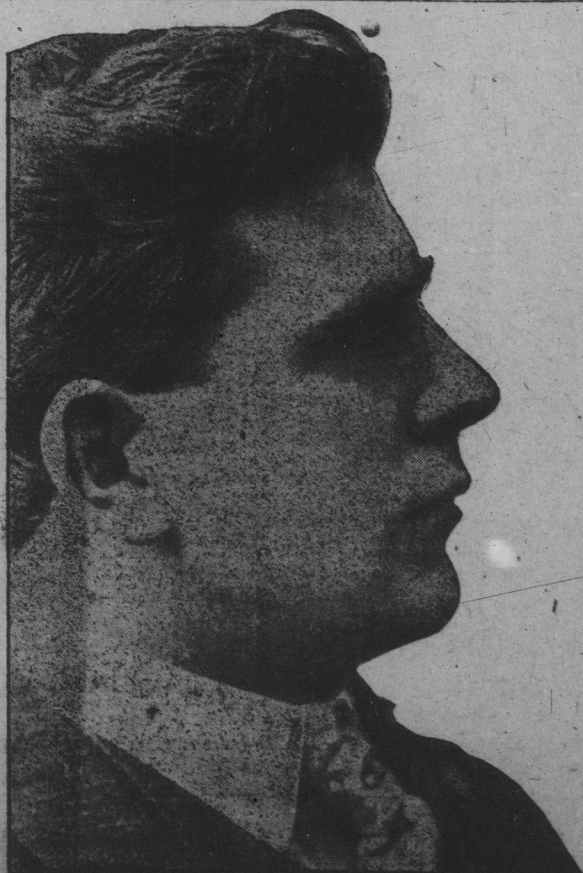
I have farms and town
property for sale or exchange.
Also stock of Merchandise,
Restuarant, Etc., for sale or
exchange. I will sell any -
thing you have, it matters not
what you have.

Give me a trial if you have anything to sell, and if you
want to buy, see me before you buy.

W. G. CONNOLY,

Office corner Harrison and Carroll streets.
PHONE 113.

SYRACUSE, IN.



MR. CHARLES R. PHIPPS,
Leading Man of the Henderson Stock Company which will be at the
K. of P. Opera House all next week.

HOLIDAY GOODS COMING

We have just returned from Chi-
cago where we purchased one of the
largest and most attractive line of
Christmas and Holiday Goods
ever placed on sale in Syracuse and
you can find a nice present for any
member of the family or for that lady
or gentleman friend.

They Are On the Way

and will be in our store for your in-
spection on next Monday.

REMEMBER THE PLACE.

M. L. Russell.