

Phones:
658-4111
&
457-3666

The Mail Journal

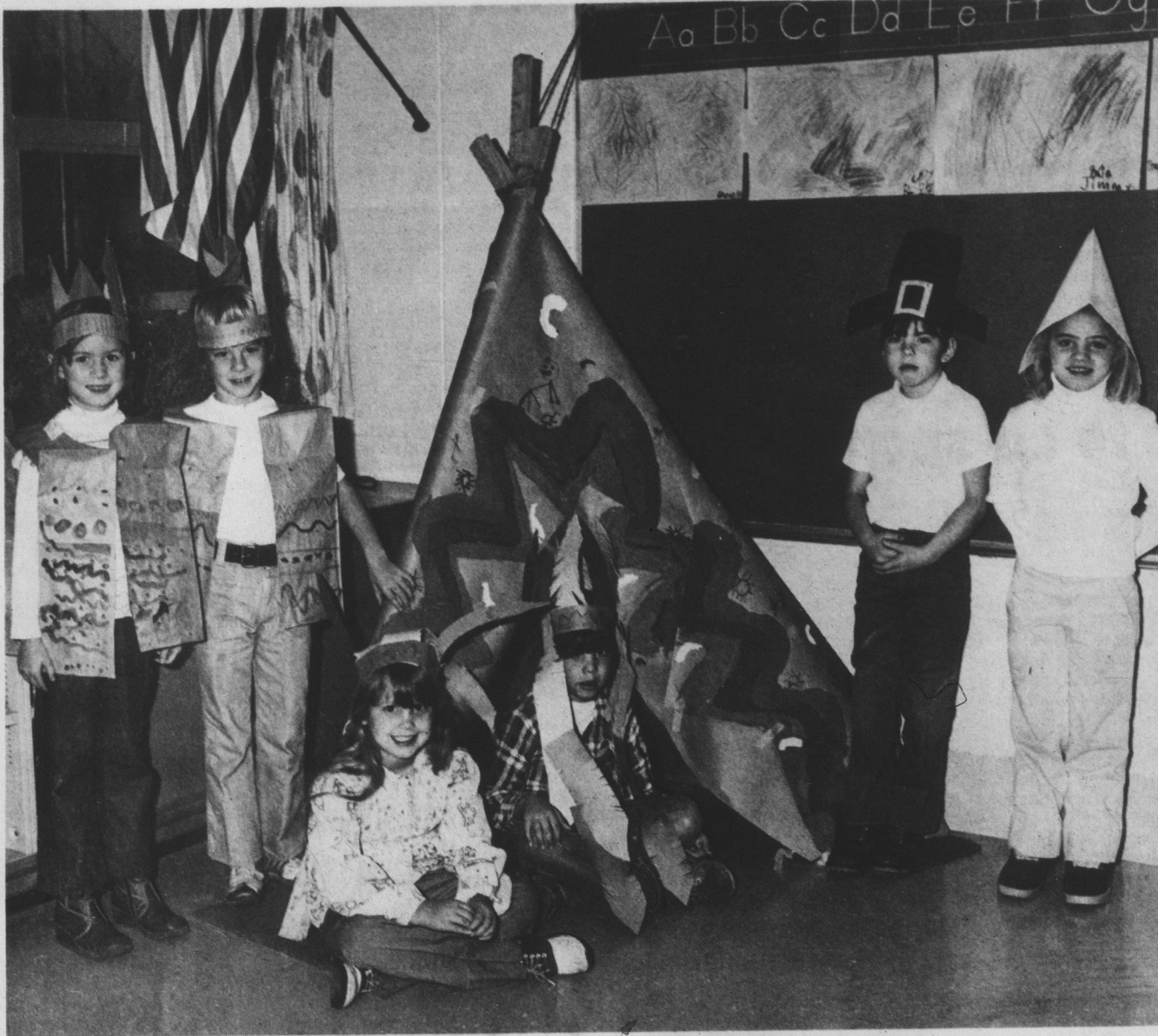
20¢

Consolidation of THE MILFORD MAIL (Est. 1888) and THE SYRACUSE-WAWASEE JOURNAL (Est. 1907)

VOLUME 15

WEDNESDAY, NOVEMBER 22, 1978

NUMBER 44



HAPPY THANKSGIVING — First grade students at Syracuse Elementary School are celebrating the Thanksgiving holiday this week.

Above, Indians and pilgrims have gathered in front of a teepee standing in the class of Mrs. Jane Wiczork. From left, are students Stephanie Stidams, six, Mrs. Josephine Butler's class; David Schmah, six, Mrs. Butler's class; Teresa Burnworth, six, Mrs. Frances Traviolia's class; Ryan Lincoln, seven, Mrs. Traviolia's class; Chris Anderson, six, Mrs. Jill Perrin's class; and Amy Hoene, six, Mrs. Perrin's class.

Beatty new Milford street superintendent

Terry Wayne Beatty, 32, r 1 Milford, was hired by the Milford Town Board last Thursday as the new street and water superintendent for the town.

Beatty, who will start his new job December 1, will receive a \$12,000 a year salary with no set hours. He replaces Marion (Bud) Fry.

In The News . . .

Church 14
Classified — Legals . . . 15-19
Cruzin 8
Community Corner . . . 6-7
Main Street 3
Sports 10-11

Mail-Journal Publisher Arch Baumgartner was among those who attended SWAP day at Wawasee last Thursday. His words and photos appear on pages 12 and 13.

Shop Syracuse for Christmas ads featured in this issue. See pages 7, 8, 9.

Miss Indiana has roots in Milford. Speaks to Lions. See page 20.

Fry, who quit to work for the city of Warsaw.

In stating the reasons why he was interested in the position, Beatty said, "I like the idea of working outdoors. I felt I could do a good job of keeping the town clean."

He added, "I will be available to all residents, including businesspeople. I hope to be responsive to the needs of the community. I think it's going to be a good experience."

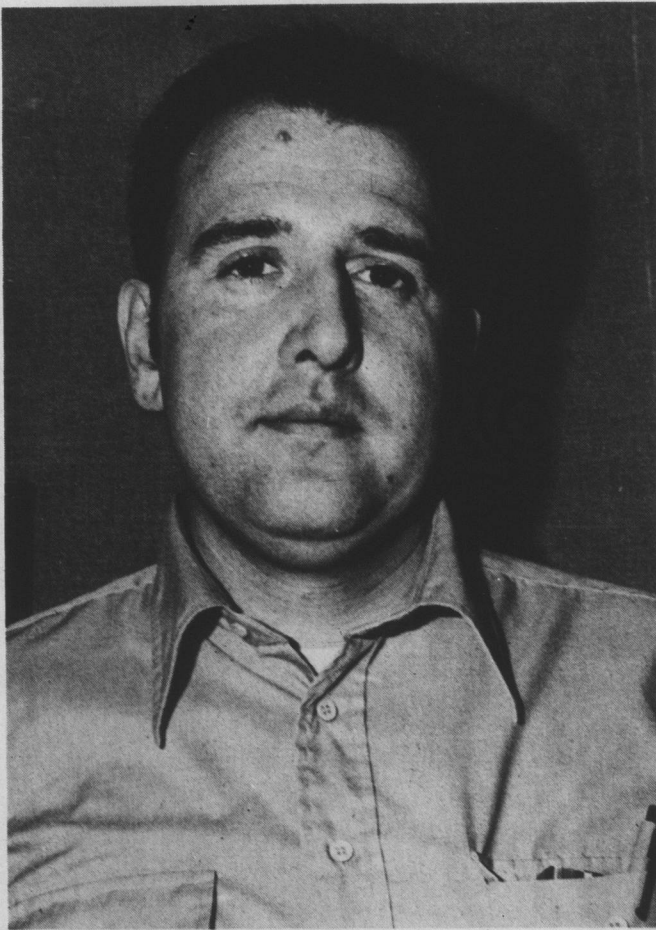
The native of Warsaw moved to Milford in 1960. He is a 1964 graduate of Milford High School.

He currently works as manager of Campbell's IGA Store and has done so for the past four years. He has also worked for The Mail-Journal and as truck sales manager for Munsen Chevrolet in Warsaw.

The former Milford EMT said he has no plans for the job as yet. "It will take me a few weeks to be familiar with the operation," he said. "Then I hope to work closely with the town board."

Beatty will be attending school in the future to be certified as water and sewer plant operator.

He is married to the former Marie Skromeleck of Milford, who also works at Campbell's in the meat department. They have one daughter, Mindy, age four.



NEW TOWN EMPLOYEE — Terry Wayne Beatty, 32, r 1 Milford, is the new street and water superintendent for the town. He replaces Marion (Bud) Fry, who went to work for the city of Warsaw.

Beatty, who will start his new duties December 1, will receive a yearly salary of \$12,000.

Paul M. Isbell named to Syracuse Town Board seat

Paul M. Isbell, 400 S. Harrison Street, was appointed to serve on the Syracuse Town Board during a meeting of that governing body held Monday night. Isbell will fill the vacancy left by James C. Tranter who resigned earlier this year.

In discussing his appointment, Isbell stated, "I have a certain amount of sentiment as it applies to the town. I also have a substantial investment in the town. My goal is to assist the town board and all its endeavors; to serve to the best of my ability."

The Syracuse native is a 1932 graduate of Syracuse High School. He attended Northwestern University for three years.

He is a former employee of The Bendix Corporation, Southfield, Mich., where he worked as Corporation Director of Insurance — worldwide. He also served as assistant secretary and assistant treasurer before his retirement in June of 1974.

He has served on the Insurance Council of the Machinery and Allied Products Institute; was a vice president and director of the Aircraft Builders Counsel, Inc.; and was a director of the Detroit Chapter of the American Society of Insurance Management.

He has lived in Syracuse most of his life except from 1946-1974, when he resided in Farmington, Mich., and South Bend.

He is a member of the Syracuse American Legion and the Elks and Moose clubs of South Bend. He has also served as Republican precinct committeeman in South Bend.

He and his wife, Mary Jane,

former senior executive secretary for Bendix, have one daughter, Paula Jane Wilson, a teacher at Purdue University. They have one granddaughter, Negan, age three and one-half.

Fair Evaluation
Paul Turpin from TenEch Environmental Consultants, Inc., presented an updated report on the Syracuse wastewater treatment plant to the board. He also read a letter from Mark W. Tenney, president of TenEch, concerning Town Engineer Jerry Lessig's allegations saying TenEch wasn't doing a good job.

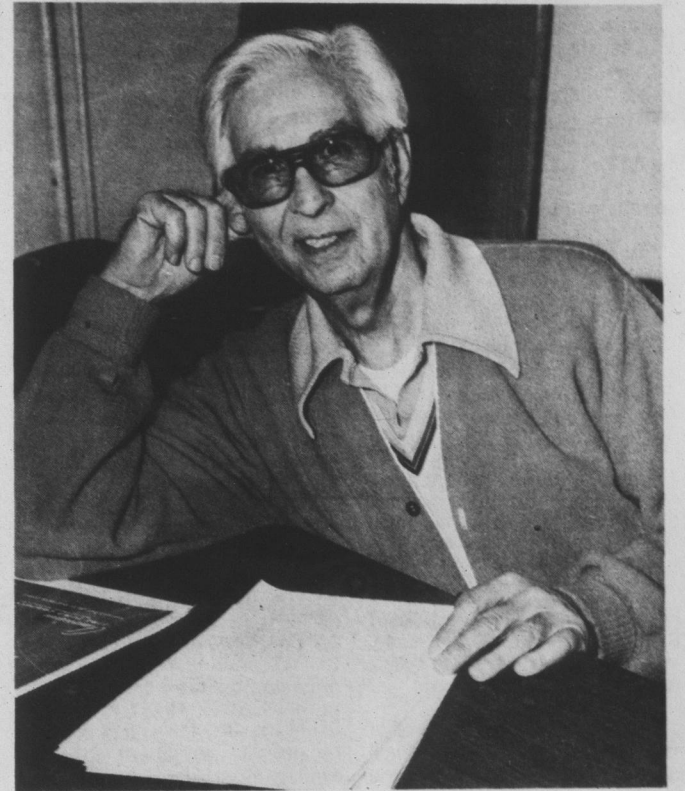
The letter reads: "We have, with the information available to us attempted to fairly evaluate the situation at the Syracuse wastewater treatment plant. During the course of the study, we have on numerous occasions asked to meet with Mr. Lessig and had not met with any success in this regard until late last Thursday."

In conclusion, Tenney stated, "We hope that the Town Board clearly understands the past situation as it has developed."

Turpin reported the basic problem at the plant is in the aeration and trickling filters, which are handling too much of the load. The overload might be a problem in design or operating procedures, he said.

"Our goal is to come up with operational changes to do the job." The next step will be to test the system under stress conditions to see where the problem lies.

Several representatives from the Indiana State Board of Health will also be coming up December



PAUL M. ISBELL

7 to look over the plant.

Another problem is the lack of an operational manual, said Turpin. "The lack of an accurate flow measurement device for one to two years is really hard to believe. The procedures should be documented for operation on a day to day basis."

The board agreed to let TenEch

go on to phase three, or final analysis and recommendations, at a cost of \$1,250. Another report will be given December 19.

Conrad Resigns
In other water and sewer matters, a letter was read from Harley Conrad, street and water superintendent, concerning

(Continued on page 2)

Sewage rates to increase 40%

The Syracuse Town Board met in special session Tuesday night to hold a public hearing on a proposed sewage rate increase for the town.

The increase, which will come to about 40 per cent, was passed through a new ordinance. It will go into effect at the next sewage billing.

Herschel Umbaugh of Umbaugh and Associates, Plymouth, rate consultant, was present to answer taxpayer's questions. He first explained why the increase was necessary.

He said, "The rate increase has

only to do with the regular rates and not the surcharge. The regular rates are designed to pay the operating cost of the sewage works; to provide monies for improvements to the system. The rates the town are now under were set up in 1976. There have been some changes in financing in 1978."

Umbaugh went on to say, "The operating revenue is a little less than expected. The operating costs are higher. A significant improvement was made to the treatment plant. The estimates were too low at that time. They were originally \$26,000. They now are twice that."

Taxpayers Concerned

Dave McGrew asked whether there would be further increases in the future. Umbaugh explained several costs were built into the ordinance which may not meet future needs. A total of \$59,211 has been set aside for operating costs, wage increases and so on while \$71,000 per year has been

designated as principal interest on sewage bonds. Another \$24,500 has been built in for improvements to the system.

Town board president John Cripe commented, "We are at the present time incorporating the services of a consulting firm, TenEch. This plant should run at least part of the time automatically. We're working to decrease these operating costs."

Loren Knispel wanted to know whether the plant was operating at its full capacity, or 500,000 gallons per day. He said, "What action are you going to take against the men who designed this thing? You've got a more serious problem than a 40 per cent rate increase."

Cripe answered, "Our particular system is rather unique in this area. The operating procedures are somewhat different. TenEch has said nothing on the capacity. They have not said that it is impossible. I'm hoping we will have some definite

answers from these people."

Cripe added, "There is a multitude of problems. If some misconduct should arise, we would check with our attorney. I don't think this is so. We, as a board, aren't sewer experts. When the third opinion is in, then we will take some action. There is not too much we can do now."

Board member Paul M. Isbell said, "I think once we get this TenEch report, the board will be in a better position to make a valued judgment. We must pay for these increases too."

Any Alternatives?
Knispel next asked whether there were any alternatives for the increase. Umbaugh said, "You need temporary revenue. The bonds are coming due. You have to get some temporary pumping in of money to keep afloat."

Will the rates go down in the future? Umbaugh answered, "You have to get your house in

(Continued on page 2)

Long-awaited story of—

Weatherhead conversion to Spicer Axle told

By ARCH BAUMGARTNER
The long-awaited update of the conversion of the large Weatherhead Company plant at Syracuse to the Spicer Axle Division of the Dana Corporation was told at a meeting at the South Shore Tuesday noon.

Principal speaker before a group of local business and industrial representatives was J. Lee Hess, general manager of the Spicer Axle Division. There were about 50 local residents present to hear the story.

Mr. Hess was introduced by Tom C. Gerstner, group manager for Weatherhead Co., who also outlined the growth at Weatherhead since it began production here in 1962.

Four Production Lines
According to Mr. Hess, there will be four production lines at the local plant, two axle carrier lines, a wheel spindle line and a steering knuckle line.

The plant, whose full production will go to the Ford Motor Company, will begin operation in April 1979. Axles produced at the Syracuse plant will be primarily for light four-wheel drive trucks. It will be an independent suspension axle, Mr. Hess noted.

He outlined the history of Spicer Axle Division, dating back to its genesis in 1902. Its main facility in this area is at Fort Wayne, with over a million square feet of production area.

The company has five plants in its axle group. Dana has 95 plants in the United States, a total of 380 plants around the world.

Mr. Hess noted that \$40 million has been committed to the Fort Wayne and Syracuse plants.

Spicer's Syracuse plant is contracted to manufacture 5,000 axles for Ford Motor Co., by June of next year.

The Weatherhead plant now has 135,000 square feet under roof with about 300 employees. Mr. Hess said there are no immediate plans for building expansion, but that he hoped to keep production here in keeping with a 20 per cent growth record of the Dana Corp. The new facility will have from 250 to 300 employees, he said.

To Keep Employees
"We intend to keep as many people here as possible," Mr. Hess commented in response to a question concerning personnel, adding that some are certain to be moved to another of the company's plants.

He added that jobs will be kept on a preferential basis so as to make the least inconvenience to present employees.

He said the company has had excellent cooperation with the local union and with UAW International in negotiating a new contract with labor through the conversion period.

Employees being laid off will be given supplemental pay over their unemployment com-

pensation pay. Management will receive such supplemental pay up to 100 per cent of regular pay.

Dick Rice of Edgerton, Wisc., a community of 4,000 located 30 miles south of Madison, will become the new plant manager of Spicer Axle, Syracuse, after April 1, next year.

A man of about 50 years of age, he has been with the company 30 years. He will make his home in the Syracuse area. He is originally from Fort Wayne.

The future of the present manager, Andy Pfefferkorn, is uncertain at the present, he said today. Mr. Pfefferkorn has been manager here for the past year and a half and has been with Weatherhead for 26 years.



AT SPICER AXLE DIVISION MEETING — At the Tuesday meeting to tell the story of the conversion of the Weatherhead Co. plant at Syracuse to Spicer Axle Division of the Dana Corp. were, from left, Dick Clark, International manager; Andy Pfefferkorn, local plant manager; Joe Gray, executive secretary of Syracuse-Wawasee Chamber of Commerce; Dick Rice, who will become plant manager April 1, 1979; and J. Lee Hess, general manager, Spicer Axle Division. They are standing before an axle they plan to manufacture at Syracuse beginning April 1, next year.