

The Mail-Journal

SPORTS

Wawasee Mauled By Bremen Lions 32-16

By John Bahn

The Wawasee Warriors met the Bremen Lions at Bremen last Friday and were defeated 32-16 by the NLC foe.

During the first quarter Wawasee received the kickoff only to have Bremen's Ted Hendrich intercepted the ball and ran all the way for a touchdown. Bremen prevented the Warriors from scoring in the first quarter.

During the second quarter Bremen forced a fumble on Wawasee and recovered it only to fumble in return and have Wawasee on the recovering end. Both teams scored in the second quarter.

In the third quarter Rus Mikel attempted a pass to Tom Fribley but Bremen's Paul Wagner thwarted the pass by snatching the ball from Fribley's hands. A 30-yard punt was fumbled when Wawasee's Steve Coburn couldn't hold on to it. Later in the quarter Bremen's Paul Wagner intercepted another pass and ran 30 yards for a touchdown.

In the fourth quarter a 40-yard punt return was made by Wawasee. With 5:20 left Blue threw a 25-yard pass to Donn May who ran for a touchdown. The extra points were scored by Blue.

Later in the fourth quarter

Wawasee fumbled and Bremen recovered only to fumble on the next down with Wawasee's Bill Richardson recovering.

Statistics

	WHS	BHS
Yards gained by rushing	42	118
Yards gained by passing	124	9
1st downs by passing	9	1
1st downs by rushing	3	3
1st downs by penalties	0	1
passes completed	21	1
passes attempted	34	5
passes intercepted	0	5
punts	1	6
punt yard average	55	29
yards penalized	35	15
fumbles	4	1
fumbles recovered	1	3

RESULTS IN PLAY AT WAWASEE GOLF CLUB

Jim Bauman fired a 76 to take top honors in the blind bogey on Sunday at Wawasee Golf club.

Results of the club tournament now in play are:

Championship flight - Dick Waldron over Dean Culp, 1-up; Calvin Jones over Joe Scheidel, 5 and 4; and Calvin Jones over Virgil Burns, 1-up in 20-holes.

B-flight - Richard Haines over Larry Miller, 4 and 3; Oliver Replogle over Merrill Postma, 1-up and Oliver Replogle over Haines, 4 and 3 for the flight championship.

C-flight - Leonard Jones over Glen King, 8 and 6; Paul Michael over Gary Price 7 and 6 and Jones over Michael, 3 and 2 for runner-up position.

E-flight - Tim Scheidel over Ron Koehlinger, 1-up.

Junior Bowlers Hold Workshop, Start Leagues

A total of 80 junior bowlers participated in the Saturday workshop held at Wawasee Bowl for students in junior high and high school.

The high school students started their league play on Tuesday of this week and the junior high bowlers will start their league session this Saturday, Oct. 3, at 9 a.m.

Anyone wishing to participate in the sport may do so by contacting Wawasee Bowl or being on hand for the scheduled league play.

DON BYRD WINS FIRST PLACE HONORS

Don Byrd of Wawasee Golf club teamed up with Lloyd Griffin at the pro-member tournament held last week at the Orchard Ridge course in Fort Wayne and came up with a tie for first place with a 13 under par 58.

The team of Denver Didier and George Miller also finished with 13 under to make the first place tie.



Hits & Misses

Sylvan's	9 3
Sharp Tool	8 4
Brown's	7 5
Sportsman's	7 5
Bud's	5 7
Dog	4 8
Brazel's	4 8
Syracuse Mobile Prod.	4 8
High team game and series:	
Sylvan - 608, 1780	
500 series: R. Brazel 516, J. Cripe 523, C. Walton 526	
200 games: L. Livengood 205	
170 games and above: D. Cripe 188, J. Wesner 188	

Land 'O' Lakes

Cutter	11 1
Frog Tavern	10 2
Harris	10 2
Regent	8 4
Bowen Motors	8 4
C & J Construction	7 5
Dean's Milk	7 5
Legion	6 6
Sleepy Owl	6 6
State Bank	5 7
Auer's Service	5 7
Aqualand	4 8
Liberty Homes	3 9
N. W. Jaycees	3 9
Wawasee Boat Co.	2 10
Jenny's Kitchenette	1 11
High team series: Cutter - 2608	
High team game - Harris - 893	
600 series: L. Welty 616	
500 series: J. Bitner 515, J. Erdley 532, C. Coburn 551, P. Bright 523, E. Ganz 529, D. Knisley 501, R. Stahly 504, R. Hostetter 507, C. Walton 525, C. Mohler 502, J. Schlotterback 509, F. Avery 520, M. Boyer 527, K. Kointz 530, G. Vanator 535, B. Yahne 509, D. Karesh 517, J. Lowe 515, F. Nyikos 580, D. Vandienbos 525	
200 games: S. Rensberger 210, E. Ganz 223, L. Welty 235, M. Boyer 213, G. Vanator 203, D. Karesh 211, F. Nyikos 210, 200, W. Benson 211	

will usually carry a label stating, "do not dryclean."

Look for garments with stitched in permanent care labels. Then you can't forget care procedures. Keep hangtags (marked to identify specific garments) in case you should forget care required for a garment.

In addition, the specialist makes the following suggestions:

—Sort clothing according to color (white, light colors, or dark) before laundering. Whites get dingy if washed with colored clothes.

—Treat stains immediately.

—If garment is to be drycleaned, be sure to identify spots and stains for the drycleaner.

—Press synthetics and blends with a warm, not a hot iron.

The Farm Market

LAFAYETTE — Concern over prospective corn yields continued to spur feed grain prices. Cattle and hog prices rose slightly. Egg prices remained steady and wholesale broiler prices climbed four cents a pound.

These were highlights of price changes in major agricultural commodities during the first half of September, according to J. William Uhrig, Purdue University extension economist.

The U.S.D.A. September crop report was the first official assessment of effects of southern corn leaf blight on the 1970 crop. The report estimated the crop at 4.4 billion bushels, down 290 million bushels, or six per cent, from the August forecast.

Uhrig notes that there is speculation that the damage from the blight may be larger than indicated by the September report, but adds that he final loss from the disease will not be known until corn harvest is well underway.

Meanwhile, cash corn prices fluctuated within a six-cent range during the first two weeks of September and ended the period with no gain. Cash corn at Chicago Sept. 15 was \$1.56½, up 32 cents from a year earlier.

A record U.S. soybean crop of one billion one hundred thirty-three million bushels was forecast. This is 20 million bushels higher than the August forecast. Carryover supplies are expected to be near the 200-million bushel mark.

Wheat prices reached seasonal highs with cash prices at Kansas City trading at \$1.59 a bushel at mid-September. Wheat exports during the marketing season which started in July are more than 40 million bushels larger than a year earlier. In addition, foreign nations are buying wheat to use as livestock feed in case corn supplies are scarce this fall, Uhrig explains. Wheat prices are currently lower than corn in the export trade and wheat is higher in protein, he adds.

Kern Grain	10 2
Mocks Marine	9 3
Wawa Laundromat	9 3
Kinder Mfg.	8 4
Todd Realty	7 5
State Bank	5 7
Superior Sample	4 8
Amer. Ind.	4 8
The Lovables	2 10
Cromwell Lumber	2 10
High team series & game:	
Kern Grain - 2361-822	
500 series: L. Vance 509, B. Gardner 544	
440 series and above: A. Sudlow-457, B. Kline-445, M. Deck-473, B. Todd-481, I. Mathews (480), L. Vance-171 (509), B. Gardner -194,174,176 (544), S. Kern-183 (495), S. Brouwer-178 (459) K. Knisley-201 (493), L. Stucky-(447), V. Penn-450	
170 games and above: B. Kay 170	

539, G. Field 508, B. Thwaites 569, L. Welty 561, D. Gardner 566, D. Stahly 514, L. Byland 520, R. Hostetter 512, G. Hostetter 507, J. Morgenthaler 574, E. Smith 510, D. McFarland 521, D. Zawadzhe 530, K. Knisley 518, B. Frenger 538, B. Gilbert 522, L. Vance 511, C. Eby 545, 450 series (women): J. Honer 469, K. Knisley 460, H. Gardner 454, E. Stahly 471, L. Neff 452, B. Kline 473, S. Kern 472, J. Trolsen 485, D. Thwaites 483, 200 games (men): L. Thwaites 220, J. Kern 200-232, B. Thwaites 216, L. Welty 205, L. Neff 188, D. Gardner 210, D. Stahly 204, L. Byland 202, B. Frenger 212, 170 games and above (women): D. Thwaites 177, J. Trolsen 196, S. Kern 175, B. Kline 170, E. Stahly 179, J. Byland 176, K. Lowe 177, G. Hostetter 191, L. Vance 192.

Tuesday Afternoon	
Kern Grain	10 2
Mocks Marine	9 3
Wawa Laundromat	9 3
Kinder Mfg.	8 4
Todd Realty	7 5
State Bank	5 7
Superior Sample	4 8
Amer. Ind.	4 8
The Lovables	2 10
Cromwell Lumber	2 10
High team series & game:	
Kern Grain - 2361-822	
500 series: L. Vance 509, B. Gardner 544	
440 series and above: A. Sudlow-457, B. Kline-445, M. Deck-473, B. Todd-481, I. Mathews (480), L. Vance-171 (509), B. Gardner -194,174,176 (544), S. Kern-183 (495), S. Brouwer-178 (459) K. Knisley-201 (493), L. Stucky-(447), V. Penn-450	
170 games and above: B. Kay 170	

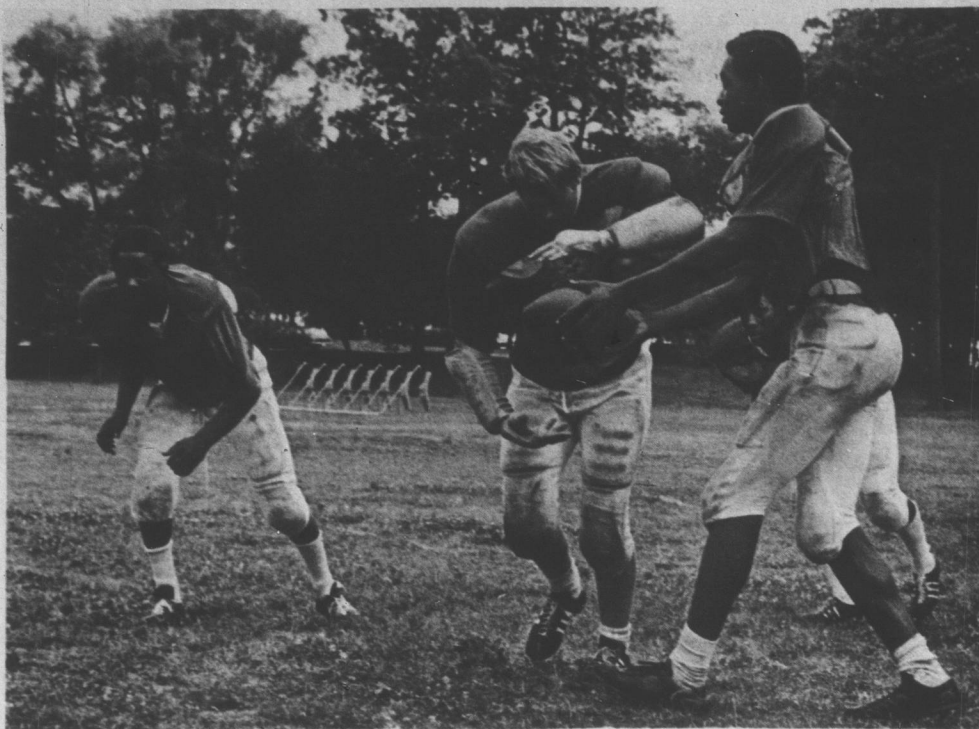
Monday Night County	
Eager Leagers	10 2
Burger Dairy Store	9 3
Wawasee Package	9 3
Wawasee Bowl	8 4
Charles 10 Pin	8 4
Frog Tavern	7 5
Bud's Body Shop	7 5
Ancor Bar	7 5
Thornburg Drug	6 6
Kurleys Keglers	6 6
Bushong Barber Shop	6 6
Dixie Boat	6 6
Louies Bar & Grill	5 7
Delta No. 2	5 7
Pilcher Shoes	4 8
Wawasee TV	4 8
Barbee Hotel	4 8
Techneyer Ace Hdwe	4 8
Delta No. 1	3 9
Swartz Homes	2 10
High team game: Frog Tavern - 974	
High team series: Wawasee Pkg - 2690	
High ind. game: Jake Kern - 247	

High ind. series: W. Collinsworth - 610	
G. Knisley 203-557, L. Miller 211, R. Thibaut 230-212-602, L. Vance 204-586, D. Armbruster 203-205-591, M. Ganshorn 202, H. Schrock 210-558, V. Strayer 225-603, B. Graft 234-559	
D. Strombeck 204, M. Dorsey 224-598, D. Smith 552, E. Henning 201-575, J. Morgenthaler 227-570, M. Hostetter 554, L. Baker 226, G. Davis 233-594, E. Anderson 217, I. Rookstool 209-584, C. Eby 558, F. Nyikos 555, J. Kern 247-555, W. Collinsworth 204-208-610.	

Milford Business League	
Milford TV	14 6
Sharp Hardware Co.	13 7
Walter Drug Co.	13 7
Campbell's Market	13 7
Arro Motor Homes	12 8
Hickory Lounge	9 11
Augsburger's Milford	8 12
Kern Grain	7 9
Berk's Body Shop	5 11
Little & Clark	5 11
Augsburger's Syracuse	5 11
High team game & Series: Milford TV - 3025,1047	
600 series: B. Simon 601	
500 series: J. Kern 570, D. Wolferman 541, B. Dippon 526, O. Replodge 520, D. Thibaut 511, J. Bray 520, D. Dowty 521, L. Newman 521, L. Young 514, D. Rensberger 511, J. Perry 510, H. Wuthrich 509, D. Wuthrich 524, M. Campbell 506, W. Tullis 506, F. Avery 502, L. Krauter 504, D. Sharp 504	
200 games: B. Simon 217-202, D. Krauter 203, D. Thibaut 201, D. Dowty 201, J. Bray 201, D. Sharp 200	

Thurs. Nite Ladies	
Hughes Digging	17 3
Pilchers Shoes	17 3
Village Green	12 8
Brazel's Bait	12 8
B & K Drive-in	11 9
Aqualand Motel	11 9
Al's South Shore Marina	11 9
Regent Homes	11 9
Louie's Bar	10 10
Barth	10 10
Kale Island Beacon	10 10
Pickwick	10 10
North Webster Bank	9 11
Foo & Faye	9 11
Bowen Motors	9 11
Wawasee T.V.	8 12
The Mail-Journal	7 13
Monsanto	6 14
Lakeland Standard	6 14
Lakeland Produce	4 16
High team game: Hughes Digging - 777	
High team series: Al's South Shore Marina - 2218	
500 series: J. Trolsen 215-168-134 for 517	
450 series and above: M. Schwab 455, N. Searfoss 456, M. Henning 452, L. Gilbert 465, J. Byland 490, B. Kline 493, C. Peterson 473, F. Money 450, B. Gardner 470, V. Penn 455, K. Knisley 451, G. Hostetter 482, F. Wortinger 451, E. Price 459, J. Reed 467, K. Lowe 465	
200 games: M. Thornburg 202	
170 games and above: L. Gilbert 174, J. Byland 178, B. Kline 187, C. Peterson 180, F. Money 172, B. Gardner 170, V. Penn 170, A. Gallahan 178, K. Knisley 183, E. Hutsell 195, J. Honer 171, G. Hostetter 179, F. Wortinger 174 J. Reed 186 C. Hostetter 171	

Friday Nite Mixed	
L. Thwaites Grain	10 2
Monsanto	10 2
Pickwick Theatre	9½ 2½
Stahly - Stillson	9 3
Louies Bar	8½ 3½
Thwaites Grain	7 5
Sleepy Owl	7 5
Vidiotronics	7 5
Ruth's Styling Salon	7 5
B & K Root Beer	6 6
Biddles	6 6
Frog Tavern	6 6
Wick's Marina	5 7
Wawasee TV	4 8
Power Mfg	4 8
Village Tap	4 8
Kinder	3 9
Beacon	3 9
Syracuse Rubber	2 10
United Telephone	2 10
High team series and game: Thwaites Grain - 2095, 744	
600 series: J. Kern 620	
500 series (men): L. Thwaites	



PREP PLAYERS — Sylvester Allen, Rod Martin, Ram Vanett and Greg Anderson are shown above as they work out on the practice field at Wawasee Prep. The school is in its first year of varsity football and has recently completed its season with a 2-1 record.

Prep Closes Season With 2-1 RE Record

Wawasee Prep has successfully completed its first senior varsity football season with a 2-1 win-loss record.

In the final game of the season at Indianapolis, Friday, Prep defeated Park School 34-14. Both the aerial attack and the ground play were successful against the Park team. In the first quarter, Rod Martin of South Bend ran 65 yards for the first touchdown. In the second period, Sylvester Allen of Chicago passed 20 yards to Mike Elward of Wabash for the TD. In the third quarter Rod Martin ran 25 yards to score, Allen made a 10 yard run for a TD, and Terry Bonds of South Bend pushed over a six yard play for the Lakers final score of the day. The Lakers were held scoreless in the final period. Scores for Park were made by Vern Golier and Keith Light of Indianapolis.

The statistics for the game were as follows:

	P	WP
First downs	7	7
Rushing yds.	140	240
Passing yds.	26	110
Penalties yds.	35	65
Fumbles lost	2	1

In this short senior varsity season the Lakers lost their first game to South Central of LaPorte County and then won against Chicago Glenwood and Indianapolis Park. Coach Phil Jones believes that this season has made a great contribution to the beginning of varsity football at Wawasee Prep even though the season was a short one with only two weeks of pre-season practice three games. This season established the Lakers in the varsity football ring with a winning season under its belt. From here on out the schedule will be that of developing the boys who will be returning next year.

The remainder of the season calls for a frosh-sophomore game with East Noble on October 1st and junior varsity games with Howe Military on the 7th, Wawasee junior varsity on the 15th and West Noble on the 20th.

Child Safety Is Everyone's Business

The following safety information was released last week by Richard D. Wells, superintendent of public instruction; Harry A. Fruts, of the school traffic safety division, and Keith Y. Carper, Whitko school superintendent. Please take the time to read the following information, as it will benefit everyone.

"School is opening, and the emphasis is on child safety; yet we continue to run over and kill more than 3,300 children each year. Many people think and accept this as a bit of life's tragedy.

Imagine yourself as a parent witnessing the suffering and experiencing the loss of a child, and the driver's persecuted feeling of responsibility regardless of whose fault it was. Can you describe the sound of impact, or visualize the broken body of a child as a result of an accident? These are all part of an American tragedy acted out many times a year.

There are things we can do as drivers and parents to reduce road exposures to our children as they flood the highways this time of year.

—Begin by slowing down.
—Watch behind and between parked cars.
—Expect the unexpected.
—Give school buses complete right-of-way.

—Know and observe school zones.
—Watch for children in areas without sidewalks.
—Use extra caution during school opening and dismissal.
—Use extra caution around bicycles.



CARD OF THANKS
I want to thank everyone for the kindness expressed through cards, memorials, prayers and deeds following the death of my husband. Special thanks to the Legion Auxiliary, Order of the Eastern Star and WSCS of the United Methodist church.
Mrs. Herbert Baumgartner

CARD OF THANKS
We wish to express our sincere thanks to Rev. Harlan Steffen, Wawasee Lakeside Chapel Harris Funeral Home, Syracuse Emergency Unit, relatives and friends for their thoughtfulness during our bereavement.
The Family of Charles E. Johnson

CARD OF THANKS
We wish to thank all our many friends and relatives who helped us celebrate our Golden Wedding Anniversary, through cards, gifts, good wishes, your presence at the reception and for all the help. We are deeply grateful to you all.
Rev. and Mrs. Virgil Mock

CARD OF THANKS
The adult board of the Lakeland Youth Center would like to thank the local merchants, the mobile home manufacturers and all individuals in the area who contributed so generously to the auction held on September 26.

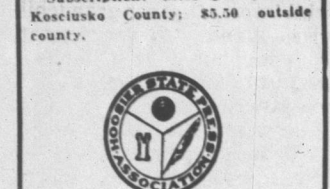


FRI. - SAT. - SUN.
Open At 6:30
Show At 7:00
Adults \$1.25 - Children 50c

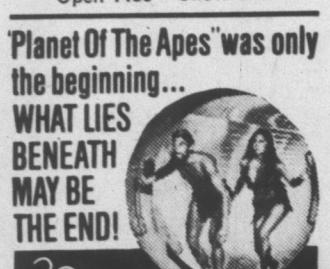


Kelly's Heroes
Metro-Goldwyn-Mayer Presents a Katzia-Loeb Production starring Clint Eastwood, Telly Savalas, Don Rickles, Carol O'Connor and Donald Sutherland in KELLY'S HEROES
GP Panavision and Metrocolor MGM

The MAIL-JOURNAL
Published by The Mail-Journal every Wednesday and entered as Second Class matter at the Post Office at Syracuse, Indiana 46367. Second class postage paid at 1400 E. Main Street, Syracuse, Indiana 46367 and at additional entry offices.
Subscription: \$3.00 per year in Kosciusko County; \$3.50 outside county.

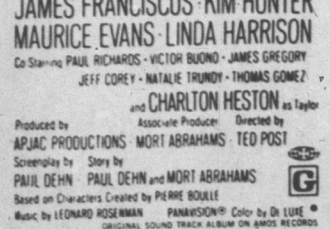


FRI. - SAT. - SUN.
Open 7:30 - Show 8:00
Planet Of The Apes was only the beginning... WHAT LIES BENEATH MAY BE THE END!



BENEATH THE PLANET OF THE APES
Starring JAMES FRANCISCUS • KIM HUNTER MAURICE EVANS • LINDA HARRISON
Directed by ARTHUR P. JACOBS
Produced by APJAC PRODUCTIONS • MORT ABRAHAMSON • TED POST
Screenplay by Story by PAUL DEHN • PAUL DEHN and MORT ABRAHAMSON
Based on Characters Created by PIERRE BOULE
Music by LEONARD ROSENBERG
ORIGINAL SOUND TRACK ALBUM ON AMCO RECORDS

Also Shown At 9:00
Richard Boone, Dean Jagger in
THE KREMLIN LETTER
20th Century Fox



Kelly's Heroes
Metro-Goldwyn-Mayer Presents a Katzia-Loeb Production starring Clint Eastwood, Telly Savalas, Don Rickles, Carol O'Connor and Donald Sutherland in KELLY'S HEROES
GP Panavision and Metrocolor MGM



Welcome Bowlers!
Open 5 A. M. Until 11 P. M.
MON. - WED. - THURS. - FRI.
GOOD FOOD
Jenny's Kitchenette
Across From Standard Station — Syracuse

WOLVERINE BOOTS & SHOES
OXFORDS \$17.99 — 6 INCH \$18.99 — 9 INCH \$22.99
AND TALK ABOUT LIGHT WEIGHT! THEY MAKE WORK A PLEASURE
DOUG PILCHER SHOE STORE
Uptown Syracuse Since 1947

