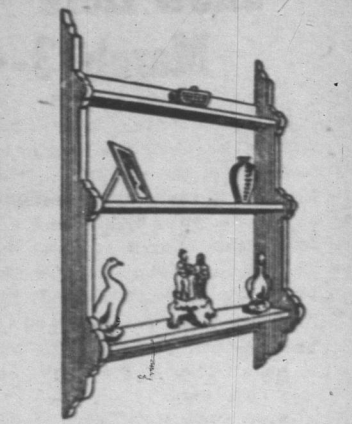


## Whatnot Shelf Makes

## Fine Gift for Home

EVERYONE always seems to need whatnot shelves. This one is a reproduction of those used frequently in Colonial homes. No skill or special tools are required to make this shelf. Perhaps the most important piece of equipment needed is a 25c coping saw and the full



size pattern offered below. This specifies the materials to use and amount needed. Simple, step-by-step directions are included. Simply trace the pattern on the wood, saw and assemble. It should not take more than two evenings to turn out a professional looking job.

Send 25c for Newcastle Whatnot Shelf Pattern No. 31 to East-Bld Pattern Company, Dept. W, Piquetteville, N. Y.

## Cattle Industry

## Grew With U. S.

Two years after the first colonists landed in Virginia, cattle were a conspicuous part of colonial wealth and by 1627 a peninsula "as large as an English county" had to be fenced off for grazing purposes. The Carolinas were once regarded as "the greatest cow country" in America. However, cattlemen began moving west after the Revolution and by the end of the Civil War, Texas was the foremost cattle state.

RELIEVE MISERIES OF  
**COLDS**  
TAKE **666**  
IN LIQUID OR  
TABLETS  
SAME FAST RELIEF IN BOTH

## Grandma's Sayings



THE MAN is purty smart who buys his wife such fine china she won't trust him to wash it.

JES CAN'T WAIT to tell the news about new Nu-Maid! It's improved! Sprinkles easier. Tastes milder 'n sweeter than ever. And "Table-Grade" Nu-Maid's sportin' a brand new package, specially made to protect that good tastin' "Table-Grade" taste!

IT'S GOOD to remember that loafin' becomes respectable, when the doctor says it's necessary.

IT'S PLAIN to see the difference in cakes 'n pies when you bake with a top quality shortening. And that means new, improved Nu-Maid—the better-than-ever margarine that's good tastin' in itself.

\*\$5 will be paid upon publication to the first contributor of each accepted saying or idea. Address "Grandma," 109 East Pearl Street, Cincinnati 2, Ohio.

**Cow-loon**

"Why is Millie so gay today?"  
"It's because she just heard that 'Table-Grade' Nu-Maid Margarine gets its fine flavor from fresh, pasteurized skimmed milk."

**OUR TOWN'S EDITOR**

Works for your best interests. His paper serves you, your church, your school, your business or your farm.

## CLASSIFIED DEPARTMENT

## AUTOS, TRUCKS &amp; ACCESS.

NEW OR USED TRUCK CAB FOR 1956  
2-ton C. O. Chevrolet  
EZRA SATTER, Morgantown, Ind. Ph. 51

48 20-FOOT FREIGHT  
Semi-trailer van, 1100x22 tires. Almost new  
Westinghouse air brakes, new tires, mechanical  
shape throughout.

48 K-7 INTERNATIONAL TRACTOR  
Westinghouse air brakes, new tires, mechanical  
shape throughout.

ALLIS-CHALMERS TRUCKING COMPANY  
Indianapolis

## BUSINESS &amp; INVEST. OPPOR.

## OPPORTUNITY

to own your own business. Exclusive franchise. No competition. Starting national campaign. Must be able to invest \$200 in mdse. Large profits. Better Homes Laboratories 4407 N. Clark St., Chicago 40, Ill.

BEST BUY—Sanitary scales, slicers, choppers, meat saws, cube steak tenderizers, cutlery, blocks, Husmann meat cases and coolers. All kinds used equip. BAKER-WARD, INC., Corner Hill and Madison, South Bend, Ind. Call 4-1261 & 2-6845.

## FARMS AND RANCHES

54 ACRES, 5-rm. bse., glassed-in front and rear porch, barn, chicken house, brooder house, hog house, 2 acres pasture, 600 ft. on black top road, 1 1/2 mi. S. E. of Walden, 1 mi. off State rd. 6. Price \$4,800. JULIAN KESCHART, Walkerton, Indiana.

## HOME FURNISHINGS &amp; APPL.

ENJOY BETTER HEALTH with America's Finest Radiator Enclosures. Write ALBRECHT COMPANY, Iowa City, Iowa.

## MISCELLANEOUS

## NERVOUS—WEAK RUN DOWN?

Hale's Iron Tonic will aid you to ENER-GIZE—VITALIZE. Feel your best—Look your best. Hale's Iron Tonic will aid in building vigorous, robust health; and is suggested to those who can't sleep well, eat well, and to those men and women who are always tired. Three tablespoons a day supply 325 I.U. of Vitamin B1, the minimum daily requirements of an adult. Hale's Iron Tonic definitely is not a laxative, yet many report after taking it, the bowels move freely and every-day medication. Vitamin B1 stimulates the digestive tract, iron aids in building, red blood cells. The regular 16 ounce bottle (a 4-ounce bottle contains 4 weeks' supply for one adult, 2 bottles (32 oz.) a 6-week supply is usually sufficient in mild cases of non-organic nutritional anemia. Iron deficiency robs women of loveliness, men of vitality, causes listlessness, nervousness, tiredness. Order your 3 bottles, a 6-week supply today. \$8.00 will bring you 3 pint bottles of Hale's Iron Tonic, a 6-week supply for \$3.00. Send check, money order to HALE PRODUCTS, P. O. Box 96, Dayton 1, Ohio. Distributor—Hale's Iron Tonic. Write for free literature.

FOR SALE—Good antique guns, flints and percussion, powderhorns, other items. RUSSELL COOK, RESSVILLE, IND.

## POULTRY, CHICKS &amp; EQUIP.

Doyle "Pulorum Passed" Chicks for Broilers and Layers

New Hampshire and other broiler breeds for immediate delivery. Large or small quantities. Write today for catalog and \$10 savings on early booked orders. Davis Poultry Farm & Hatchery Route 20-C Ramsey, Ind.

## The Best Investment U. S. Savings Bonds

## Sure helps you shake off COLDS

say thousands about good tasting SCOTT'S EMULSION

If colds hang on, or you catch them often, maybe you don't get enough natural A & D Vitamin food. Then start taking good tasting Scott's Emulsion! See how promptly it helps break up a cold and helps build you up, so you feel like a new man.

A HIGH ENERGY FOOD TONIC—rich in natural A & D Vitamins and energy-building natural oil. Economical. Buy today at your drug store.

MORE than just a tonic—it's powerful nourishment!

## SCOTT'S EMULSION

HIGH ENERGY TONIC

WNU-J 07-49

## SWISS LINIMENT FORMULA

Excellent for Sore Muscles Sprains and Aches!

Our Family Remedy for 3 Generations. Very efficient and economical. Get ingredients at any Drug Store.

Sample Bottle and complete instructions for medicinal use.

SWISS LINIMENT only \$1.95. Get relief . . . mail your dollar bill today.

SCHNEIDER

1208 Stewart St., Seattle 1, Washington.

## High-School Graduates CHOOSE YOUR CAREER IN A GROWING PROFESSION!

—open to girls under 25, high-school graduates and college girls.

—more opportunities every year for the graduate nurse.

—best preparation for both career and marriage.

—ask for more information at the hospital where you would like to enter nursing.

—and who know you.

—Keep up with the news about the people you know . . . and who know you.

—BUY OUR HOMETOWN PAPER

—Keep up with the news about the people you know . . . and who know you.

—BUY OUR HOMETOWN PAPER

—Keep up with the news about the people you know . . . and who know you.

—BUY OUR HOMETOWN PAPER

—Keep up with the news about the people you know . . . and who know you.

—BUY OUR HOMETOWN PAPER

—Keep up with the news about the people you know . . . and who know you.

—BUY OUR HOMETOWN PAPER

## Pigskin Previews

THE MONTHS of September, October and November still lie some distance to windward. But things are happening now that will affect the coming autumn such as arranging football schedules. Especially the schedule that Notre Dame will face.

It might be mentioned here that Notre Dame, after all the hullabaloo, did slightly better than all right Southern Methodist, Tulane and North Carolina offer three of the better games of the year.

Southern Methodist was Southwestern champion last fall, and probably will be again this year with Don Walker and Kyle

Rote back in action. Tulane has one of the best teams in the South. Tulane and Vanderbilt look to be two southern leaders next fall.

North Carolina will have the brilliant Justice and the able Art Weener back, but there will be many gaps to fill. Carl Snavely will fill them well. He usually does.

These three additions to the Irish slate are hooked up with a far stronger Navy team, Southern California, Purdue, Indiana, Iowa, Michigan State and Washington—no easy march. This is better than the average schedule. It has no deliberate soft spots that so many others have. It will certainly be a total of eight hard games.

Notre Dame, like Michigan, North Carolina and others, will lose good men and return good men. But you can gamble—if you like to gamble—that Frank Leahy will have a first-class squad with fast, hard-hitting runners and at least two good passers. You can also be fairly sure he will have a good line.

What about Army's schedule? It has a number of soft spots, but it also has some rough-and-rocky bridges to cross. One of them is Michigan. That's a sure thing. Others can be Stanford, Pennsylvania and Navy.

But outside of Michigan, there is no trouble ahead. This forces too much pressure on the Michigan game. A defeat here can play havoc with either team's final ranking—more with Army than with Michigan.

Army will have a fine backfield and uncertain line strength with such stars as Yeoman, Henry, etc., missing. Her ends will be her strongest point.

Navy, again, has no chance to beat her schedule, the toughest in football. The 1949 menu includes Southern California, Notre Dame, Army, Pennsylvania, Duke, Princeton and others of heavy calibre.

But the 1949 Navy squad should move well up in the year's ranking. Oklahoma will be strong again. Bud Wilkinson has a winning grip on the situation with a team that can exchange class with anyone around.

## Ivy League Returns

There has been a tendency in recent years for other sectors to look with a certain amount of scorn on Ivy league teams. Part of this was justified, although scholarship requirements in the league are well above the average, no matter what you hear.

As far as 1949 is concerned, the ivy-covered colleges and universities will have no apologies to offer any section in the matter of football ranking. Last fall, Cornell and Dartmouth would have been an even match for most of the leading teams of the Midwest, South, Southwest or Far West.

This will be true again this year. Few of the better teams in any section will have backs to match the Big Red or the Big Green. I mean such backs as Johnny Clayton of Dartmouth, a passer of the Bertelli type—or Frank Miller and Jerry Fleischmann of Cornell.

Lefty James and Tuss McLaughry had two fine teams last fall. They would have been even bets against any team in the Big Nine except Michigan—which is favored over many. This new season they can be joined by Princeton and Harvard.

Princeton's outlook is good. So is Harvard's. Both can be first class. Brown can also move up. Pennsylvania is never weak. George Munger loses Chuck Bednarik and a few other good men, but if you keep track, year after year, you'll find the Red and Blue a rather rugged barrier.

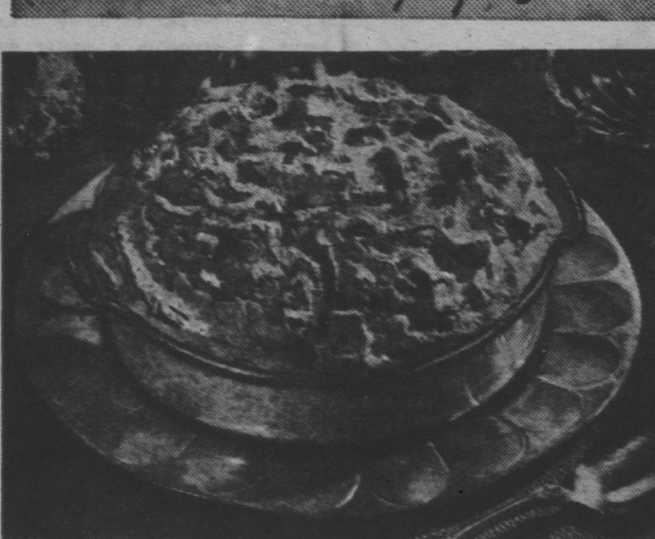
Columbia is definitely below 1948 form, even with the redoubtable Lou Little in charge. Columbia is little flooded with material, and no team can lose 12 of its best men from a small squad—such men as Kussow, Kossides, etc.—and hope to have much left. It will take the full genius of Lou Little to win a game here and there.

## Strength in the East

If you add Army and Navy to Cornell, Dartmouth, Pennsylvania, Princeton, Harvard and Brown, you get eight teams that can match any other eight teams from any other football reservation—Midwest, South, Southwest or Far West. This is at least one off-season opinion.

Now that I've got all that off my mind, I can now give my undivided attention to more timely topics—baseball, for instance.

## HOUSEHOLD MEMOS... by Lynn Chambers



## Serve Baked Puddings for Dessert!

(See Recipes Below)

## Oven Magic

THERE IS NOTHING more warming to cold spirits than to come from the chilly out-of-doors into a kitchen fragrant with the baking of fruit desserts. These, served warm with cream, make a very special finish to the ending of a meal.

Homemakers will appreciate being able to use the oven for more than just the main dish and vegetables. When you bake your dessert along with the meal, you save time and last-minute preparation.

## Apple Rice Pudding (Serves 6-8)

1 cup uncooked white rice  
6 medium apples, thinly sliced  
1 teaspoon salt  
1 cup sugar  
1 teaspoon cinnamon  
3 cups milk  
2 egg yolks  
2 egg whites, beaten  
4 tablespoons brown sugar  
1 teaspoon vanilla

Wash rice and cook in saucepan with 1 quart boiling water and 1 teaspoon salt for 10 minutes; drain. Place half the apple slices in a buttered 2-quart casserole. Blend together salt, sugar and cinnamon and sprinkle 1/2 of the mixture over apples; add 1/2 of the rice and the remainder of the apples and sprinkle with second 1/2 of the sugar mixture. Top with remaining rice and sugar mixture. Pour in milk which has been blended with beaten egg yolks. Cover and bake in a slow oven (300°F.) for about 2 hours, stirring occasionally, adding extra milk as needed. Uncover and cook 30 minutes longer to brown. To make meringue for pudding: beat egg whites until they peak; add brown sugar, a tablespoon at a time, beating between each addition and continue beating until very stiff. Fold in vanilla. Spread on pudding or until to oven for 20 minutes or until lightly browned. Cool. Serve with a jug of cream.

## Peach Cheese Pie (Serves 6-8)

Crumb Shell: Blend corn flake crumbs and sugar. Add melted butter or substitute.

Filling: 1 tablespoon plain gelatin  
1/4 cup cold water  
1/4 cup sliced canned cling peaches  
1/2 cup syrup from peaches  
1/2 cup granulated sugar  
2 eggs  
1/2 cup lemon juice  
1 teaspoon grated lemon rind  
1 cup cottage cheese  
1/2 teaspoon salt

Crumb Shell: Blend corn flake crumbs and sugar. Add melted butter and mix well. Pack firmly into bottom and sides of 8-inch pie pan. Chill thoroughly.

Filling: Soften gelatin in cold water. Heat peaches, syrup and 1/4 cup sugar. Beat egg yolks slightly and add gradually to heated mixture without stirring. Continue to cook and stir until slightly thickened. Dissolve softened gelatin in hot peach mixture. Blend in lemon juice and rind. Cool. Force cottage cheese through sieve and add to peach-gelatin mixture. Beat egg whites until foamy, add salt and beat stiff. Gradually add remaining 1/4 cup sugar, beating after each addition. Fold into peach-gelatin mixture. Pour into crumb shell and chill 3 to 4 hours before serving.

## Chicken salad looks elegant when garnished with apricots rolled in toasted coconut, topped with whipped cream and a cherry.

Raw cauliflowerets tossed with shredded raw carrots, blanched almonds and lettuce hearts in mayonnaise are crisp and delicious.

Garnish individual salmon salads with notched cucumber slices, marinated green beans, tomato wedges.

Luncheon meat rolled with a filling of finely shredded carrot mixed with mayonnaise may be used with any vegetable salad.

Canned, assorted fruits make a picture-pretty salad when topped with mint sherbet.

Figs and cooked prunes, stuffed with cottage cheese and arranged on pineapple slices will complement any dinner.

To make onion juice for flavoring vegetables for salad, sprinkle cut onion with salt, then scrape juice, using a sharp knife.

Another idea for new peas: cook the peas with a bit of chopped fresh mint and see what a lifting odor and appetizing flavor it adds to the vegetable.

## BIBLE

International Union Sunday School Lessons

SCRIPTURE: Matthew 4:18-22; Mark 1:16-20; Luke 6:12-13.

DEVOTIONAL READING: Luke 5:1-11.

## Eleven Immortals

Lesson for February 28, 1949

JESUS believed in prayer, but he did not usually spend all night at it. When he did, we may be sure he had something of the greatest importance on his mind. One of these occasions was the night before he selected the twelve men he called Apostles. He had thousands of disciples, crowds followed him wherever he went. But it was important to have Dr. Foreman

a few with whom he could live as an intimate friend. So from the immense number of followers, Jesus selected twelve closest friends. Before that fateful morning no one outside their villages had ever heard of them. But now their names are known—and eleven of them are honored—around the world.

## Jesus Multiplies Himself

A GOOD executive, Jesus multiplied his own personality. A recent book has shown how Harry Hopkins during World War II lived in the White House as Roosevelt's personal companion, having given up his own ambitions and living on to carry out the ideas of his chief. Without Roosevelt, Hopkins would have been little more than an inferior politician; and without Hopkins, many of Roosevelt's plans could not have been carried out. He enabled the president to be in two places at once. So it was with Jesus, as Mark tells us. Jesus wanted those twelve to be with him, and then to send them out.

He wanted these friends to know him as the crowds, and his enemies, never could know him. He wanted these men to absorb his ideas and ideals.

The word Jesus used for them was not his own invention; "apostle" was the word used all over the civilized world in those days for an ambassador, a personal representative of royalty. All Christians are in the "apostolic succession." If a Christian can truly say, "I live, yet not I, but Christ liveth in me," then he is, as these men were, Christ's personal representative.

## Raw Material

THE ASTONISHING thing about Jesus' choice of these twelve is his faith in them. Of course they had faith in him—who would not? But who would have faith in them? There was not a single "outstanding" man in the lot. Not one had what we would call a college education, not a man of them had held public office or was rich or famous for anything at all.

There was Peter, an ordinary fisherman, much given to profanity; there was Matthew, a crooked business man if ever there was one, for no publican could be honest and keep from starving; there was Philip, as stupid a man as ever asked a foolish question; there were James and John, loud-mouthed Jesus nicknamed them the Thunder Boys—"Sons of Thunder"; greedy fellows who could not be satisfied till they had elbow room 'way ahead of everybody else; there was Thomas the born pessimist, the defeatist. . . . What could have got into Jesus' mind to select such men?

—and Judas Iscariot

THE SECRET of Jesus' choice was this: He selected his men not for what they were or had been, but for what they could become, filled with his spirit, transformed by his friendship. It is so today, as always. The Kingdom of God needs men and women, but the raw human material found in or out of the churches is too shabby and weak to build anything like the kingdom of God.

Yet after all, it was never human weakness that has built the Kingdom. It is men re-born, re-made by contact and companionship with Jesus the Lord of men. . . . Now as then, Judas is among the Twelve. Jesus must have seen good in Judas, otherwise it would have been mockery to choose him. But though that man was with Christ for just as long as the others, heard what they heard and saw what they saw, he ended by being a traitor. "Twelve immortals"—? Nay, but one is the immortal betrayer, and suicide. Why? The reason was in Judas, not in Jesus.

But he wants volunteers, never forced labor. The Christ of Glory can be served by the humble; but the free Christ can be served only by free men with open hearts. Judas may keep his heart shut if he will; Christ never forces his way in.

(Copyright by the International Council of Religious Education on behalf of 40 Protestant denominations. Released by WNU Features.)

## About the Bible

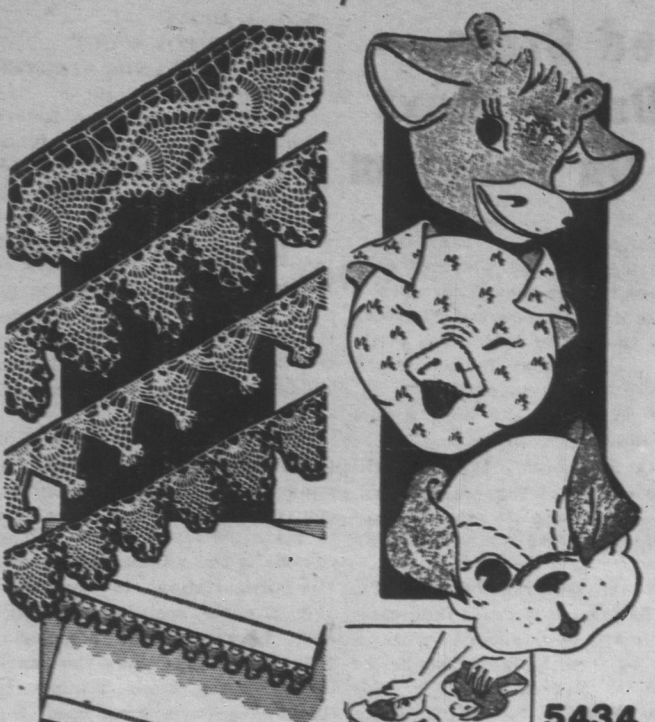
The importance of reading Christian literature is emphasized by the great amount of reading material circulated by forces of evil.—Claude E. Cogswell, Rosinberg, Texas.

Yesterday is a cancelled check. Tomorrow is a promissory note. Today is ready cash; spend it wisely.

Skillful pilots gain their reputation from storms and tempests.

## NEEDLEWORK PATTERNS

## Pineapple Edgings Are Dainty Sew Some Colorful Potholders



## Brighten Your Kitchen

Give your kitchen a fresh, new look with these amusing potholders. Each one is six inches in width and can be made of bright scraps you've been saving. The faces are embroidered in simple stitches after the holders are finished.

To obtain applique design, sewing instructions and color suggestions for embroidering features of the Handy Helpers Potholders (Pattern No. 5434) send 20 cents in coin, your NAME, ADDRESS and PATTERN NUMBER.

SEWING CIRCLE NEEDLEWORK, 530 South Wells St., Chicago 7, Ill. Enclose 20 cents for pattern.

Name \_\_\_\_\_

Address \_\_\_\_\_

City \_\_\_\_\_

State \_\_\_\_\_

Zip \_\_\_\_\_

Enclose 20 cents for pattern.

Name \_\_\_\_\_

Address \_\_\_\_\_

City \_\_\_\_\_

State \_\_\_\_\_

Zip \_\_\_\_\_

Enclose 20 cents for pattern.

Name \_\_\_\_\_

Address \_\_\_\_\_

City \_\_\_\_\_

State \_\_\_\_\_

Zip \_\_\_\_\_

Enclose 20 cents for pattern.

Name \_\_\_\_\_

Address \_\_\_\_\_

City \_\_\_\_\_

State \_\_\_\_\_

Zip \_\_\_\_\_

Enclose 20 cents for pattern.

Name \_\_\_\_\_

Address \_\_\_\_\_

City \_\_\_\_\_

State \_\_\_\_\_

Zip \_\_\_\_\_

Enclose 20 cents for pattern.

Name \_\_\_\_\_

Address \_\_\_\_\_

City \_\_\_\_\_

State \_\_\_\_\_

Zip \_\_\_\_\_

Enclose 20 cents for pattern.

Name \_\_\_\_\_

Address \_\_\_\_\_

City \_\_\_\_\_

State \_\_\_\_\_

Zip \_\_\_\_\_

Enclose 20 cents for pattern.

Name \_\_\_\_\_

Address \_\_\_\_\_

City \_\_\_\_\_

State \_\_\_\_\_

Zip \_\_\_\_\_

Enclose 20 cents for pattern.

Name \_\_\_\_\_

Address \_\_\_\_\_

City \_\_\_\_\_

State \_\_\_\_\_

Zip \_\_\_\_\_

Enclose 20 cents for pattern.