

# Clearance SALE

MEYERS FURNITURE STORE  
"Where Good Furniture is not Expensive"  
NORTH WEBSTER

\$29.75 INNER SPRING MATTRESS Mattress Protector Included	19.75	\$64.50 OIL HEATERS SALE PRICE	54.50
\$29.75 INNER SPRING MATTRESS Mattress Protector, Mattress Cover, Patch Quilt Included	24.75	\$59.50 OIL HEATERS SALE PRICE	49.50
\$39.50 INNER SPRING MATTRESS Candle Wick Bed Spread, Mattress Celanese Ticking	29.75	\$54.50 OIL HEATERS SALE PRICE	44.50
Protector and Cover Included	37.75	\$49.50 OIL HEATERS SALE PRICE	39.50
\$49.50 STUDIO COUCH SALE PRICE	21.75	All 9x12 wool	
\$39.50 STUDIO COUCH SALE PRICE	27.75	rugs, all blankets	
\$34.75 STUDIO COUCH SALE PRICE		at reduced prices	

A Walnut End Table & Lamp Included  
with Each Studio Couch

89.50	Living Room Suite	74.75
94.50	" " "	79.75
99.50	" " "	84.75

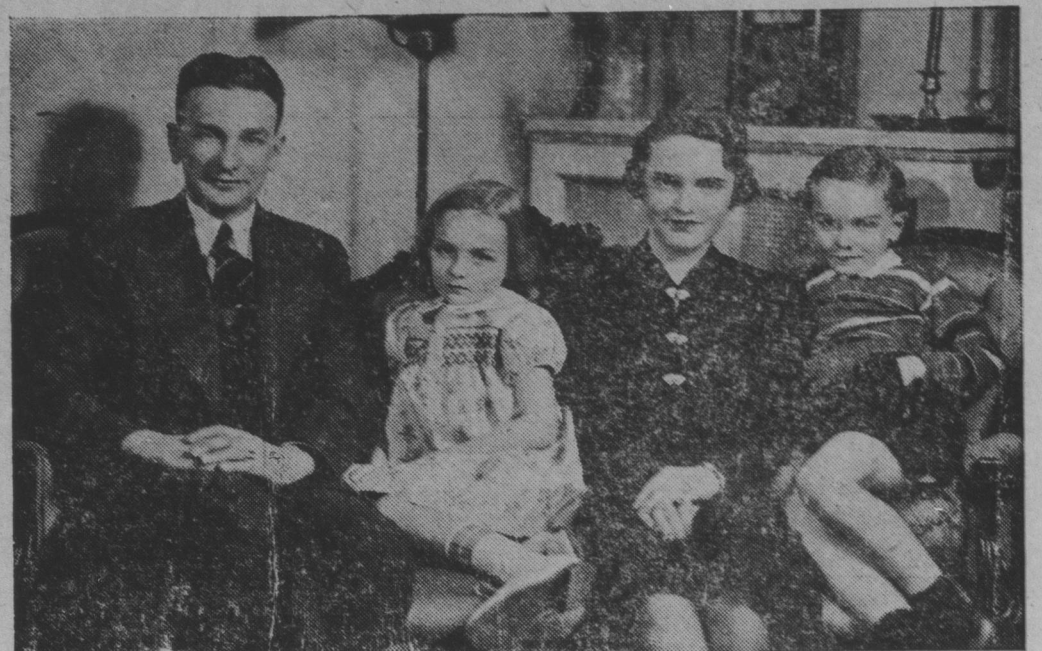
Table Lamp Included

All Floor Lamps Reduced  
Cedar Chests Especially Priced  
YOUR OPPORTUNITY TO BUY GOOD FURNITURE  
AT A SAVING

These Prices For One Week Only

SEE

MEYERS  
at No. Webster Before  
Buying Furniture  
ANYWHERE



RENSSELAER, Ind., November 1.—Congressman Charles A. Halleck, Republican candidate for re-election to Congress from the second Indiana District, has been making a whirl-wind campaign throughout the thirteen counties of the northwest quarter of the state during the last four months, but he makes it a point to be in Rensselaer every evening to be with his charming family. Here he is pictured with Mrs. Halleck, who is her husband's strong right arm in the campaign, and their nine-year old twins, "Chuck" and "Patsy." Mr. and Mrs. Halleck were classmates at Indiana University and married soon after leaving the Bloomington campus. Mrs. Halleck was Blanche White, of Indianapolis. "Chuck" and "Patsy," obnoxious of the State House Two-Percent Club, are not worried about the opposition effort to "purge" Representative Halleck from Congress.

## OFFICERS FOR COUNTY FAIR ELECTED WEDNESDAY

Following a banquet held Wednesday night in the Masonic building, 51 stockholders of the Kosciusko County Fair Association re-elected Milo Maloy, president, Floyd Stevens, vice-president, Willard Cain, treasurer, and elected O. B. Kilmer, secretary. Kilmer had finished the unexpired term of Chester Jontz, who resigned recently. Homer Menzie and John Whiteneck were re-

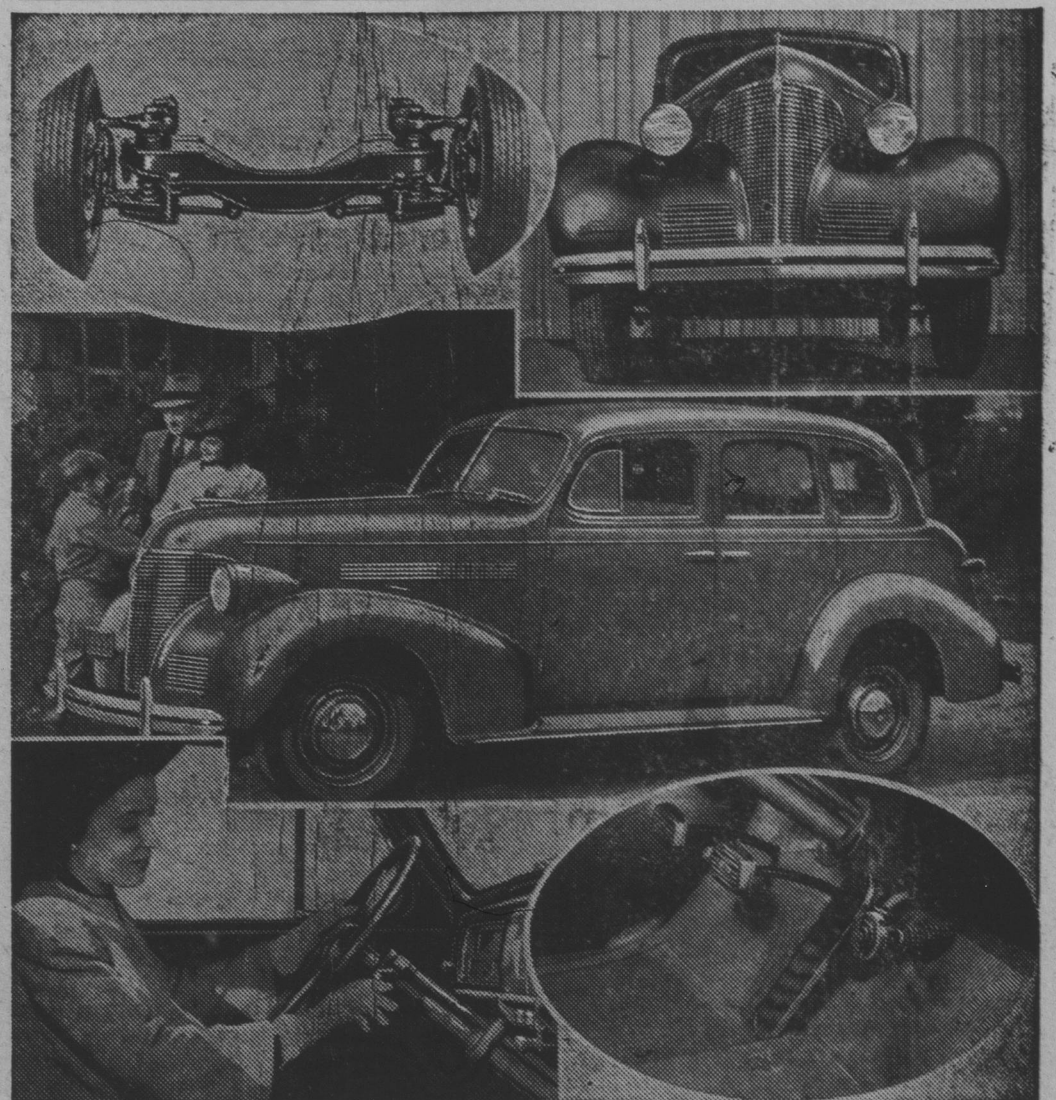
-elected to the board of directors and Frank Merkle to replace Rudy Ross. Carl F. Beyers was named as chairman of the board. Finances were discussed and it was found the 1938 fair lost \$172.00. As a surplus was on hand, the association still has some \$1800.00 in the treasury.

**TYPEWRITERS STOLEN  
FROM WAKARUSA SCHOOL**  
Theft of five new typewriters, valued at \$600, from the typing room

of Wakarusa high school was reported to Sheriff Edward J. Bouck Thursday. The theft was discovered at 6 a. m. by Eli Hunsberger, janitor, when he reported for work.

A glass in the rear door of the school had been broken out. Similar methods were used to gain entrance to the typing room. Nothing else was missing. The school building was closed at 9:30 last night, following basketball practice.

## Chevrolet Takes Big Strides Ahead for 1939



New Aero-stream styled bodies combine with major mechanical improvements to provide new beauty, safety, comfort and operating ease, in the 1939 Chevrolets, presented October 22, and featured at the big auto shows this month. The new models are offered on two chassis, the Master De Luxe and the Master 85, both of which are powered with Chevrolet's famous six-cylinder valve-in-head engine.

A new vacuum gear shift mechanism with steering column control, optional on all models at small extra cost, does 80 per cent of the work of shifting gears. The Master De Luxe series features a new riding system, in which a brand new Chevrolet Knee-Action mechanism is scientifically co-ordinated with new ride stabilizer and double-acting hydraulic shock absorbers to furnish a smooth, soft ride.

Central picture is the new Master De Luxe Sport Sedan. Upper right: front end view of the 1939 car; Upper left: Master De Luxe front suspension unit, complete; Lower left: accessibility and finger-tip ease of operation are two major features of Chevrolet's vacuum gear shift with steering column control; Lower right: As the handbrake on all models is re-located under the cowl, front compartment floor is cleared in cars with vacuum gear shift.