

Syracuse-Wawasee Journal

PUBLISHED EVERY FRIDAY AT SYRACUSE, INDIANA BY
SMITH & HOWARDIRA T. HOWARD
EditorEDWARD H. SMITH
Business Manager

Entered as Second Class Matter December 31, 1937, at the Post-office at Syracuse Indiana, under the Act of March 3, 1879.

Now that the lake season is over, and the greater portion of the cottagers have left Syracuse and Lake Wawasee to return to their homes in various parts of the central states, Syracuse, like all resort towns, settles down to the business of its fall and winter trade.

This trade of a necessity must come from our townspeople and citizenry throughout its natural trading area.

The Journal, although only in its ninth month, covers both Syracuse and its contingent trading territory very thoroughly and is the best medium through which to reach both city and rural buyers.

Our advertising rates are very reasonable and our list of readers cover just the people Syracuse merchants should contact through their advertisements.

Let no one tell you that Syracuse is doomed to the confounded bow-wows, because of this or that having been done or not having been done. We still contend it is the most widely known town of its size in the great middle west, it with Wawasee, is the largest summer resort in the state; it has some of the most desirable factory cities in the country good paved roads leading to and from it in every direction, has the possibility of becoming the mecca for this section of the country for winter sports which always draws big, enthusiastic crowds of people who come, see, spend money with us, and then go back home and help advertise us. These, Mr. Citizens, are Syracuse's chances—as Syracuse—to not only survive, but to grow and prosper and, become the thriving little city it has every natural chance to become.

PAST MATRONS CLUB
AT MASON CLUB ROOM

The Past Matrons Club of Syracuse Chapter No. 283 Order of the Eastern Star were delightfully entertained at a Halloween party in the Masonic club room on Tuesday evening by Mesdames Adah Crow and Grace Slabaugh.

The guests arrived masked and were greeted by two ghosts, who later escorted each guest into the club room proper which was gaily decorated with Halloween appointments. Here, one by one, each guest was initiated into the "Ghost Circle" after walking through coils of fire.

Everyone enjoyed the usual merriment of unmasking, which was followed by numerous contests involving the exercise of the five senses. Prizes were won by Carrie Rapp, Esther Osborn, Edith Harley and Elmore Colwell.

At a late hour the guests found their places at a beautifully decorated table, appropriate to the Halloween season, where a most delicious lunch was served.

Those present were Mesdames Edith Harley, Elmore Colwell, Esther Osborn, Emma Thibodeaux, Fannie Hoy, Mary Hoy, Carrie Rapp, Ida Hamman, Ida McGarity, Georgia Miller, Lelia Greene and Prim Dunn.

SAMUEL MCLELLAN BUCHEL
DIES IN INDIANAPOLIS

Samuel McClellan Buchtel, 76, Noble county farmer who resides east of Syracuse, died at 12:15 p. m. Tuesday in the Methodist hospital at Indianapolis.

He and his wife, Sarah, last week left for Indianapolis to visit their foster son, Noah Bell, and last Friday Mr. Buchtel suffered a stroke of apoplexy.

Surviving are his wife, a daughter, Anna, at home; the foster son, two brothers, Jasper, of Syracuse, and Ford, of Ligonier; and a sister, Mrs. Ed Harper, also of Ligonier.

Funeral services will be held at 2:00 p. m. today (Friday) from the Solomon's Creek church. Burial will be made in the adjoining cemetery.

SCOUT NOTES

Boy Scouts of America Troop No. 28, Syracuse will have a feed and will entertain the sponsoring institution, the Syracuse Ministerial Association "dutch treat" at 6 o'clock next Monday evening. The speaker will be field executive Gerald Shipman of the Pioneer Trails Area. The Troop committeemen are also invited to this "dutch treat" feed.

Having placed street markers on most of the streets of Syracuse the Scouts are now planning to number the houses. Words of praise from several citizens and visitors have encouraged these civic service projects.

Twenty Syracuse Scouts and cubs journeyed to South Bend last Saturday and saw Notre Dame trounce Kansas 52-0. Transportation was furnished by C. R. Slabaugh, Rollo Neff, Claude Kistler, Vernon Backman and Eugene Fidler.

ZION U. B. CHURCH
H. M. Malsom, Pastor.

Services at 9:30 a. m., DST.
Sunday School at 10:30 a. m., DST.

SYRACUSE METHODIST CHURCH
Rev. Purdy, Pastor.

Unified Service — Worship — 10:00 to 11:45 o'clock.
Epworth League, 6 p. m.

TOO LATE TO CLASSIFY

FOR RENT—One clean, convenient light housekeeping room to neat employed person or persons. J. G. Isbell, phone 814.

BAKE SALE

The Ladies Aid of the Church of the Brethren will hold a bake sale at Klink's Market Saturday, Oct. 8. Sale beginning at 8 o'clock.

RICHVILLE M. E. CHURCH
C. C. COLLINS, Pastor.

John Emmert, superintendent.
Sunday school 9:30 a. m.
Worship at 10:45, pastor in charge.
At noon time a basket dinner will be served.
At 2 p. m. a Rally Day program will be given with special music and a sermon by Rev. Krider of Milford.

GRACE LUTHERAN CHURCH
The Rev. Harvey Currens, Pastor.

Bible School at 9:45.
Merritt Richhart, Supt.
Morning worship, 11:00 o'clock.
The heathen in the African jungle know not the true God. They need no house of worship. They cannot worship Him.
The people of this enlightened land know of the true God. They have beautiful houses of worship and regular worship services. But they do not worship Him. The Almighty God is thy judge. Which do you think, will He reject?

CHURCH OF THE BRETHREN
Rev. Ralph G. Rarick, Pastor.

Sunday school, 10:00 a. m.
Guy Symensma, superintendent.
International lesson — "Spiritual Worship."
Preaching at 11:00. Both preaching services of the day will be in charge of the pastor, who is home from his campaign of evangelism at Springfield, Ohio.
Brethren Young People's department meets in the evening at 6:45.
Sunday evening service, with music, other features of worship and a sermon, beginning at 7:00 o'clock.
These evening services are always built to be of special interest to the public. Unless you are worshipping elsewhere, we want you in!
Ladies Aid Society meets each Thursday.

TRINITY EVANGELICAL

J. S. Pritchard, Pastor—Phone 170
Sunday School, 9:45 a. m. Mrs. Wilma Hire, superintendent.
Morning worship, 10:45 a. m.
Intermediate League, 6 p. m.
Evening service at 7:00 o'clock.
Choir rehearsal Saturday, 2 p. m.
Mid-week meeting, Thursday evening at 7 o'clock.

The Fellowship class will be entertained in the parlors of the church Tuesday evening, October 11 at 7:45. The men of the class will furnish the program and refreshments.

The Senior Aid Society will meet in the home of Mrs. Sadie Hire on Wednesday afternoon at 2 o'clock.

The Missionary Society met in the home of Mrs. R. W. Osborn. Sixteen members were present and participated in the study of "Missions in Modern India."

Mr. and Mrs. Dial Rogers and Beverly Klink, of South Bend, spent Sunday with Mr. and Mrs. E. E. Holloway.

M. K. MEREDITH

General Contractor
FINE MASON WORK
Sea Walls — Water Proofing
Phone 492 Syracuse, Ind.

UNITED BRETHREN IN CHRIST
J. C. Bailey, Minister.

Church schools are as follows:
Indian Village, 9:30 a. m.
Syracuse, 9:45 a. m.
Concord, 10:00 a. m.
Public worship: Indian Village, 10:30 a. m.; Syracuse, 7 p. m.
At the morning service at Indian Village, Rev. B. H. Cain, D. D., superintendent of St. Joseph conference, will be the guest speaker. Let there be a goodly attendance. Come expecting good spiritual things, and come expecting to give good spiritual things. Empty your vessel of self and fill it with Christ.
The pastor will bring the message at the evening service at Syracuse. If you come in the right spirit, and with the right purpose, you will go away happy.
You are welcome to any and all our services.

SPECIAL

Beginning next week we will run Three day SPECIALS on Monday, Tuesday and Wednesday of each week-- INDEFINITELY

Shampoo & Finger Wave 50c

3.50 Permanent 3.00
5.00 " 4.50

We also give a 2.50 permanent

These prices are for Mondays, Tuesdays and Wednesdays only.

We want our customers to know that the same quality material and workmanship that goes into these three day specials, that has always been used in all our work.

Mary Bushong
14 YEARS EXPERIENCE

Jayne Shoemaker
EXPERIENCED OPERATOR

LA BONITA
BEAUTY SHOP

for
Good Mason
Work,
see
Harry H. Brinkman
"The Bricklayer"
Syracuse

QUICK RELIEF FROM
STOMACH ULCERS
DUE TO EXCESS ACID

Free Book Tells of Marvelous Home Treatment that Must Help or It Will Cost You Nothing
Over one million bottles of the WILLARD TREATMENT have been sold for relief of Stomach and Duodenal Ulcers due to Excess Acid—Poor Digestion, Sour or Upset Stomach, Gasiness, Heartburn, Sleeplessness, etc., due to Excess Acid. Sold on 15 days' trial! Ask for "Willard's Message" which fully explains this marvelous treatment—

—HORNBERG DRUG COMPANY

TRY JOURNAL WANT ADS

Pre-Closing Sale

FURNITURE, RUGS, LINOLEUM, BEDS, SPRINGS, MATTRESSES, CHAIRS, TABLES, STUDIO COUCHES, ETC.

Everything in our stock will be offered at Sharply Reduced Prices beginning

AT 9 A. M.

SATURDAY, OCT. 8,
Continuing until SATURDAY NIGHT, OCT. 15

As in the past this store will be closed through the late fall and winter months. This sale is held to enable us to reduce our inventory to a minimum, and the prices have been cut accordingly. **Next Spring Everything Must Be New—Now Everything Must Go.**

Look At These Values!

9x12 Seamless Concord Axminster Rug, few choice patterns, regular price \$36, SALE \$27.75

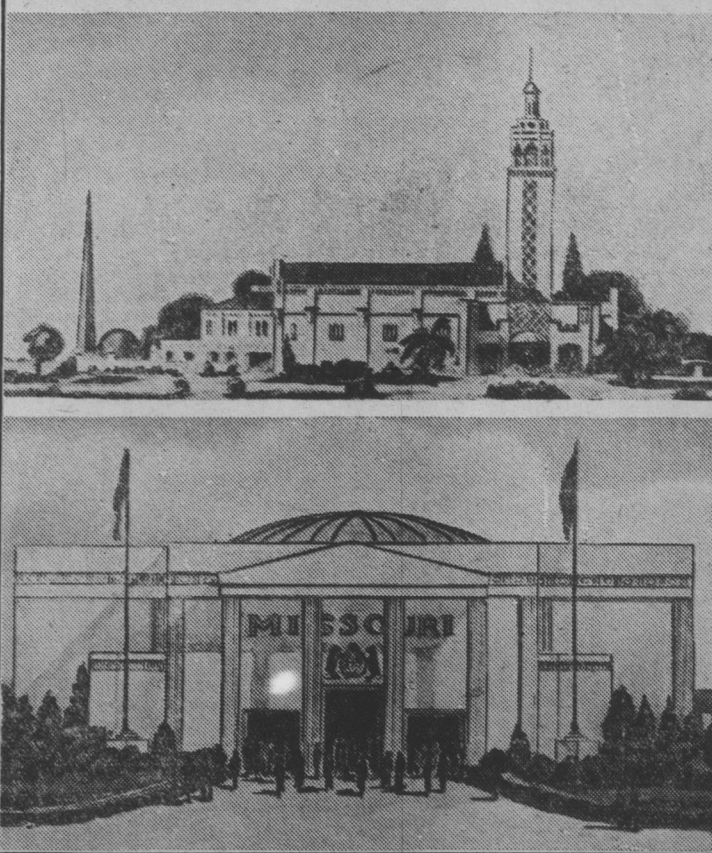
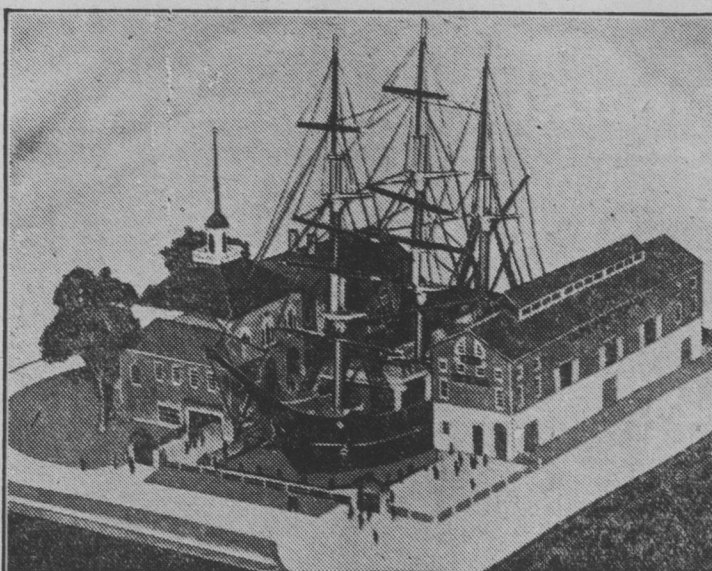
Armstrong Quaker Floor Covering, several patterns, 9 feet wide, regular 69c, SALE 49c

Simmons Studio Couch, innerspring regular \$32.50 SALE \$23.95

Streit Slumber Chair, only one left, in heavy green tapestry, Marvellous for comfort \$22.50

Beckman Furniture Home

Syracuse, - - - Phone 71

Typical State Buildings
At New York Fair 1939

At the top is a model of the New England Building for the New York World's Fair which opens on April 30, 1939. The scene is a typical New England waterfront with a 135-foot sailing vessel lying at dock. On one side is a merchant's warehouse; on the other, a two story structure indicating the Bulfinch contributions to New England architecture.
In the middle is the Florida exhibit which will occupy 2½ acres of ground and will depict the citrus industry, phosphate mines, animal life and other resources and advantages of the state.
At the bottom is the building of the state of Missouri in which will be shown the industrial, agricultural and recreational life of the state.

Bachman's

Kraft Cheese 2 lb. brick or Am. 39c

Monarch Catsup Fresh made 2 14 oz bots 25c

OK Bread 3 loaves 25c

Pancake or Buckwheat Flour 5 lb. bag 19c

Cornmeal "new crop" 5 lb. bag 15c

FRESH FRUITS and VEGETABLES

Texas Grapefruit 7 for 25c

Fresh Cranberries lb. 15c

Sweet Potatoes 8 lbs. 25c

FINE QUALITY MEATS

Rib Boil 2 lbs. 25c

Round or Sirloin lb. 25c

OLEO lb. 10c

TRY OUR FINE QUALITY "YELLOW CREEK" BEEF