

DOLPHIN CLUB NEWS

Thursday, May 16 is Ladies Day for Dolphin Club women members. Knowing that many persons who live nearby never visit Speedway, the ladies will meet at the clubhouse at 10 a.m., visit the Speedway 500-Mile Race Museum, watch action on the track, then go to the new Speedway Motel for luncheon at 11:30 a.m.

Friday, May 17 is Game Night at the Dolphin Club for adults. Guests are invited. Prizes are given. Games start at 7:30 p.m.

Summer swimming lessons for Dolphin children are now being organized. Three sessions of group lessons are scheduled for a total of 10 lessons, \$5. Semi-private lessons are scheduled in two ses-

sions, \$5 for 5 lessons.

Adult classes in the evenings and mornings can be arranged if enough people express interest.

Indpls. Hiking Club

The Indianapolis Hiking Club will hike in Otter Creek Park, Kentucky, on Saturday and Sunday, May 18-19. Both the Louisville Hiking Club and Cincinnati Hiking Club will be there too. Miss Wilma Franz, 3869 Forest Grove Dr., will be the leader.

Drexel Garden's Fire Dep't. Euchre Party

The firemen of Drexel Garden's fire department will spon-

sor a suchre party, Friday night, May 17, 1963, at the fire station, 5245 West Naomi Street. Game time 8:00 p.m.

Refreshments served all evening. A nice selection of prizes. Public invited.

POLE POSITION MECHANICS BANQUET

The annual Pole Position Mechanics Banquet, kickoff event for the 1963 "500" Festival has been set for Thursday, May 23.

As in the past the event will honor the chief mechanic of the car which sets the fastest time during the first day of qualifications for the Indianapolis "500."

The banquet will be held at the new Speedway Club House on the southeast side of the 500 track. The evening's activities will begin with a social hour at 6 p.m. followed by dinner and the award ceremonies which start at 9.

BAHA'IS TO MEET

The Baha'is of Indianapolis will

observe the 100th anniversary of the declaration of Baha'u'llah, prophet-founder of the Baha'i Faith, at a special meeting to be held at the World War Memorial on Saturday, May 18th, at 3:00 p.m. The public is invited to this world-wide Jubilee which follows the World Congress of the Baha'i Faith recently held in London.

TOWN NOTICE

(Continued from page 1)

Line to the Center Line of West 10th Street; thence West along the Center Line of West 10th Street to the Center Line of Grande Avenue; thence South along the Center Line of Grande Avenue approximately 1475 feet.

Thence West along Southern Corporation Line a distance of approximately 1285 feet to a stone; thence deflecting Southwest a distance of approximately 231 feet; thence deflecting Northwest a distance of approximately 378 feet; thence West to the Center Line of Big Eagle Creek; thence in a Northwesterly direction to the West side of Lyndhurst Drive at its intersection with Big Eagle Creek, thence North to the Center

Line of West 10th Street; thence West approximately 250 feet beyond the intersection of West 10th Street and Norfolk Avenue to the West Corporation Line; thence North to the B & O Railroad; thence Northwest to Big Eagle Creek; thence East along the Center Line of West 16th Street to the point of beginning.

WARD II

Beginning at point of intersection of West 16th Street and U. S. Highway 136, West along the Center Line of West 16th Street to its intersection with the Center Line of Lyndhurst Drive, thence North along the Center Line of Lyndhurst Drive to its point of intersection with the Center Line of U. S. Highway 136; thence in a Northwesterly direction along

Center Line of U. S. Highway 136 to the West Corporation Line; thence North approximately 200 feet to West 21st Street (extended); thence East along 21st Street (extended) to its point of intersection with the Center Line of Lyndhurst Drive; thence North along the Center Line of Lyndhurst Drive to its point of intersection with the Center Line of Twenty-Second Street; thence East along the Center Line of Twenty-Second Street to the point of its intersection with the Center Line of Auburn Street; thence South along the Center Line of Auburn Street to the intersection of the Center Lines of Auburn Street and U. S. Highway 136; thence South East along the Center Line of U. S. Highway 136 to the point of beginning.

WARD III

Beginning at the point of intersection of the Center Lines of Lyndhurst Drive and West Sixteenth Street; thence West to Big Eagle Creek, thence North along Corporation Line a distance of approximately 1328 feet; thence East along North Line of Cunningham Park Addition a distance of approximately 1767 feet to a point approximately 226 feet West of the Center Line of Cunningham Road, thence Northwesterly along West Corporation Line (said Corporation Line being the West Line of 23 tracts of land known as the Eaglebrook Survey) to a Line South of Tract 1; thence North to the Center Line of Cunningham Road; thence Northwesterly with the Center Line of Cunningham Road to the Center Line of U. S. Highway 136, then South-easterly along the Center Line of U. S. Highway 136 to the Center Line of Lyndhurst Drive; thence South with the Center Line of Lyndhurst Drive to the point of beginning.

WARD IV

Beginning at the point of intersection of West Sixteenth Street and U. S. Highway 136, thence in a Northwesterly direction along the Center Line of U. S. Highway 136 to the point of its intersection with the Center Line of Auburn Street; thence North along the Center Line of Auburn Street to point of intersection of the Center Line of Auburn Street and Twenty-Second Street, thence West along the Center Line of Twenty-Second Street to the point of its intersection with North Lyndhurst Drive; thence North along the Center Line of N. Lyndhurst Dr. to the point of intersection of Lyndhurst Drive and Winton Avenue; thence West with Corporation Line (said Corporation Line being the South Line of land owned by Speedway Schools) to its point of intersection with the Center Line of Moller Road extended, thence North along the Center line of Moller Road to the point of its intersection with West Twenty-Fifth Street; thence East with the Center Line of West Twenty-Fifth Street to a point in the intersection of the Center Lines of West Twenty-Fifth Street and Georgetown Road, continuing East to the West property line of the C.C.C. and St. L. Railroad Right-of-Way; thence South to the Center Line of West Sixteenth Street; thence West with the Center Line of West Sixteenth Street to the point of beginning.

WARD V

Beginning at a point in the intersection of the Center Lines of West Twenty-Sixth Street and Moller Road; thence South along the Center Line of Moller Road to a point on the South Corporation Line (said Corporation Line being also the South boundary Line of land belonging to Speedway Schools), thence West with said South Corporation Line to the West boundary line of a tract of land known as the Howard Lacey farm; thence South to the Center Line of U. S. Highway 136, thence in a Northwesterly direction with the Center Line of U. S. Highway 136 to the point of its intersection with the Center Line of Highway 1-465, thence North to a point which would be approximately the intersection of West Thirtieth Street if extended and Highway 1-465; thence East along West Thirtieth Street if extended to its intersection with the Center Line of High School Road; thence East to a point in the Center Line of High School Road to a point approximately 175 feet North of the Center Line of Elaine Street if extended; thence East along the North boundary of Falders Meadowood addition a distance of approximately 1300 feet; thence South along the East boundary line of Falders Meadowood addition, a distance of approximately 700 feet; thence East along the North boundary Line of Wagners Homestead addition to a point in the Center Line of Moller Road; thence South along Center Line of Moller Road to its intersection with West Twenty-Fifth Street, continuing South to point of beginning.

COME
SEE...
YOU'LL
SAVE



Special
Thru
SATURDAY
May 18, '63

4575 WEST 16TH
30TH AND GEORGETOWN RD.

FRYERS

WHOLE

CUT UP... LB. 29c

25^c
lb

SMOKED PICNICS... lb. 29c

RIB ROAST 4th and 5th Rib lb. 59c

SLICED BACON All Good 2 lb. pkg. 89c

RIB STEAKS... lb. 79c

BANANAS... lb. 10c

WATERMELONS... only 99c

APRICOT PIE Large 8 Inch 39c

**"We Repair
SCREENS"**
WINDOWS or DOORS
SPEEDWAY HARDWARE

1612 NORTH LYNDHURST

CH. 4-3156



OPEN MONDAY thru FRIDAY, 9 A.M. to 7 P.M.

SATURDAYS, 9 A.M. to 6 P.M.

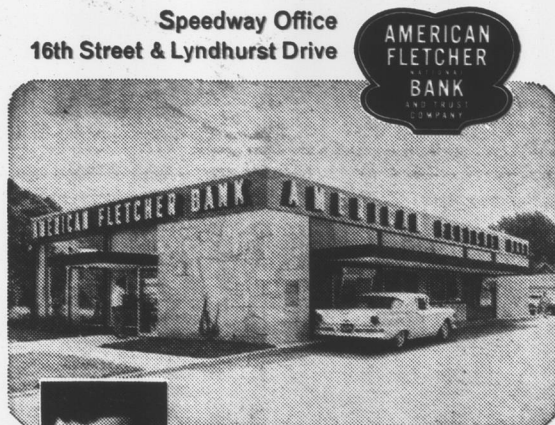


TE 9-6564

CH 4-9588

U.S. 40 Just East of Plainfield

1550 MAIN ST., SPEEDWAY



Ask Robert Sims about

Auto Financing

Life, Accident and
Health Insurance
included at no
additional cost



HURRICANE LOUNGE

FEATURED AT
HURRICANE LOUNGE



Helen Hissam

4561 W. 16th St.

CH. 4-3392

HOURS: 11:00 A.M. to 2:00 A.M.

COCKTAILS ★ DINNER
★ ENTERTAINMENT ★

DINNERS and SNACKS SERVED FROM 11 A.M. TO MIDNIGHT

STEAKS - PRIME RIB
SHRIMP - LOBSTER - ETC.

Music by "HELEN" at

INDIANA'S 1ST ALLEN THEATRE ORGAN

Nightly from 7 to 12

PANSY PLANTS

Pak of 12... 75c

3" Potted 25c ea.

PAKS

- ★ PETUNIA Several Varieties
- ★ ALYSSUM
- ★ MARIGOLD
- ★ SCARLET SAGE
- ★ COLEUS
- ★ SNAPDRAGON
- ★ COX COMB
- ★ MOSS ROSE

69¢ PAK

BIG BOY TOMATO PLANTS

25c each... 9 for \$2.00

GERANIUMS 4" 75c-Pak of 6 \$1.50

POTTED PETUNIAS 3" ... 25c ea.

HARDY GARDEN MUMS 50c ea.

PHLOX HARDY CREEPING - CLUMP 50c

GROUND COVER

- IVY
- AJUGA
- PACHYSANDRA
- EUONYMUS

POTTED ROSES

- HYBRID TEAS
- FLORIBUNDA
- GRANDIFLORA
- CLIMBERS

Lawn Rakes - Pruning Shears
Garden Supplies

PEAT MOSS - FERTILIZERS
INSECTICIDES - GRASS SEED

JOHN
GRANDE

GARDEN CENTER

8 A.M. to 6 P.M. Monday thru Saturday
SUNDAY 12 NOON TO 6 P.M.

915 GRANDE AVENUE