

MRS. VIRGO REFUSES INTERVIEW WITH PAW PAW SHERIFF

Trial of Mrs. Tabor Continued Until Monday When Witnesses Fail.

By United Press: PAW PAW, Mich., April 24.—Under Sheriff Dwight Baker returned home Saturday morning from Scotts, Mich., where he made an unsuccessful attempt to interview Mrs. Joseph Ciova Virgo of South Bend regarding where her husband, who is wanted as a witness in the trial of Mrs. Sarah I. Tabor for the death of her daughter, Maude Tabor Virgo, three years ago, can be found. Mrs. Virgo, who with her small daughter, is with Mrs. Virgo's relatives at Scotts, refused to see the undersheriff. Every effort to get an interview with her failed. The authorities here are still continuing their search for Virgo. The failure of Virgo, the state's main witness, to appear here Friday caused the trial of the 39-year-old mother, charged with the death of her daughter, to be continued to Monday. Testimony Friday of Drs. Young and Hamilton, Lawton physicians, who conducted the original autopsy, conflicted sharply with that of Dr. A. S. Warthin, University of Michigan pathologist. The Lawton physicians testified that there was no evidence an illegal operation had been performed, while Dr. Warthin said his autopsy showed the cause of death to be hemorrhage, resulting from a criminal operation.

MUSICAL PROGRAM AT FIRST METHODIST

Following is the musical program for Sunday morning under the direction of Mr. Fred G. Haas, organist and director: Prelude in F.....Truette Processional Hymn No. 13. Response (Chant) The Lord's Prayer.....Halden Offertory—Cantilene.....Halden Anthem—"Seek Ye the Lord".....Roberts Recessional (Choir) Postlude—Processional March.....Salome Wilson E. Snyder, candidate for county treasurer, solicits the vote of those participating in the democratic primaries Tuesday, May 4. 3135-25

MILLER HAMILTON GIVES WORD "GO" ON CENSUS FIGURES



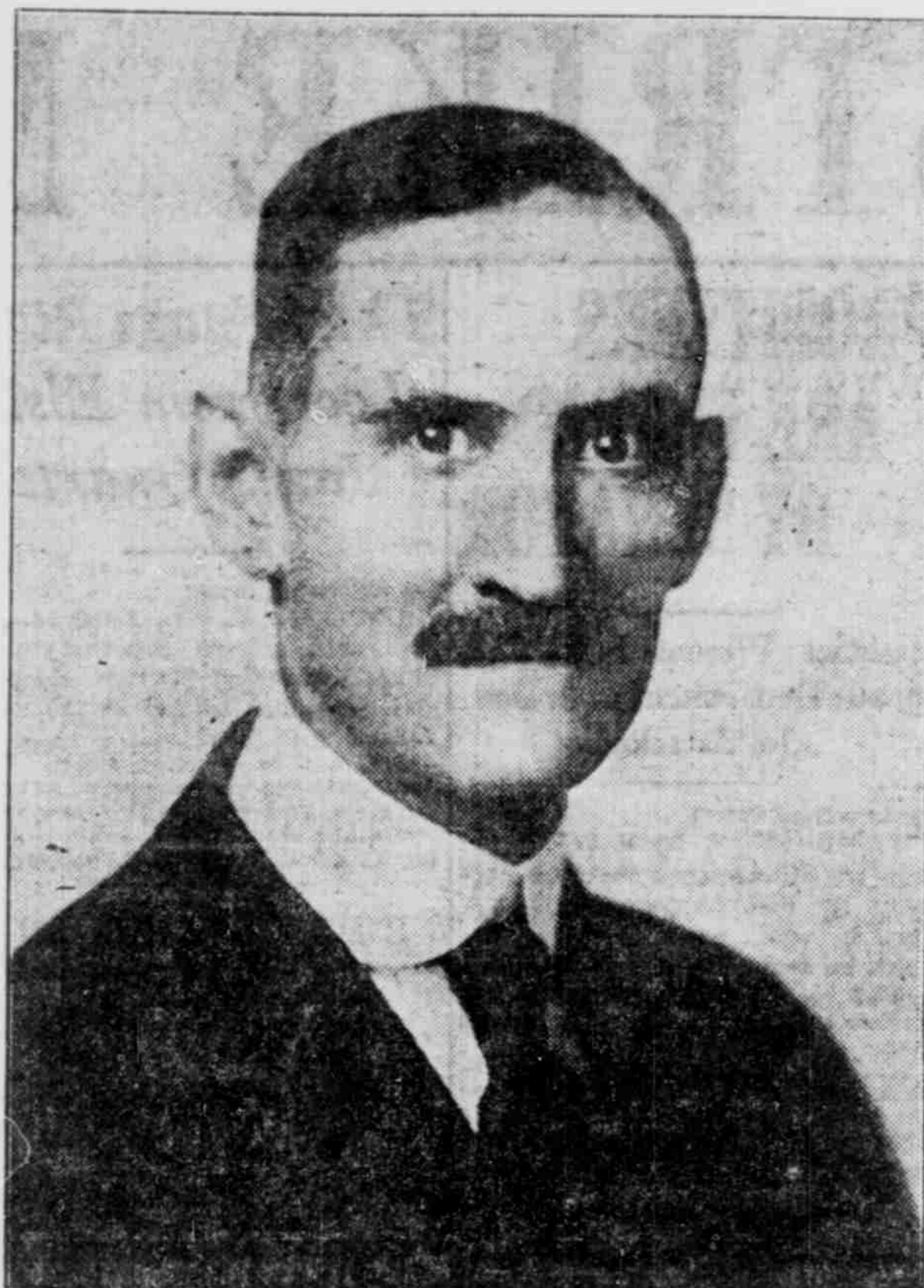
"Let's Go," Miller Hamilton used to say when he had the last piece of telegraph copy on the hook in the composing room, and wanted things rushed as press time drew near. That was when he was telegraph editor of The News-Times. "Go," the same Miller Hamilton now says every workday morning at 9:30 o'clock, and every weekday evening at 9 o'clock. And as Mr. Hamilton says this one word, he stands with his watch in his hand, giving the signal to telegraphers for the press association to pick out the completed figures of population from the federal census bureau at Washington. The former News-Times telegraph editor is now the publicity director for the census bureau department. He left the telegraph desk at The News-Times office two years and a half ago to enter the office of the war trades board. Later he entered the census bureau and today he gives the signal for sending out the latest 1920 census figures to men who now hold positions like the one he held before leaving South Bend.

DEMOCRATS WILL HOLD PRIMARY. The democrats will hold a primary election Tuesday, May 4, at which time Wilson E. Snyder, candidate for county treasurer, solicits the vote of all participants. 3134-25

METHODIST BISHOPS MEET IN KANSAS CITY

By United Press: KANSAS CITY, Mo., April 24.—Twenty-five Methodist Episcopal bishops were in semi-annual conference here today. They conferred on matters to be presented the general conference of the church opening at Des Moines next week.

Try NEWS-TIMES Want Ads



Emmet E. Woolverton

Democratic Candidate for COUNTY TREASURER

Subject to the Democratic Primary May 4th

INDIANA BELL TELEPHONE COMPANY

Telephone Toll Rates

Your attention is again invited to the advantages and economies which may be had under our present Toll Rate Schedule.

"STATION TO STATION" RATE

When a person makes a toll call without specifying that conversation is desired with a particular person, and the connection is established and conversation held, the "station to station" rate applies.

"Station to station" calls should be made by number wherever Telephone Directory information is available. Where this information is not available at the calling telephone, such calls may be made by giving the toll operator the name and address of the subscriber at the telephone called.

"PERSON TO PERSON" RATE

When a person makes a toll call, specifying that conversation is desired with a particular person and the connection is established and conversation held with that person, the "person to person" rate applies.

As this service requires a greater amount of operating effort and use of toll circuits, the rate for such calls is about one-fourth greater than the "station to station" rate. The "person to person" rate is computed on the day rate between the points involved, whether the call is made during the day or during the night, and the minimum charge is 15c.

No "person to person" call is accepted where the "station to station" rate is less than 10c.

"REPORT CHARGE"

When a "person to person" call is made and the particular person desired is not in or will not talk, or when an exact telephone address of the particular person desired has not been given and he cannot be reached at a telephone within one hour, a "report charge" applies.

Such a charge also applies if the calling party is absent when the connection is completed within one hour, or if he refuses to talk.

This charge is to cover compensation for the operating work performed and use of toll circuits, and is approximately one-fourth of the "station to station" rate.

In any case where a "report charge" applies, the minimum charge is 5c.

"APPOINTMENT" RATE

When the calling party in placing his call appoints a definite specified time at which he will talk on a "person to person" basis and the conversation is held at the specified time, the "appointment" rate applies.

The "appointment" rate is approximately one-half greater than the "station to station" rate. The "appointment" rate is computed on the day rate between the points involved, whether the call is made during the day or during the night, and the minimum charge is 20c.

No appointment call is accepted where the "station to station" rate is less than 10c.

"Report charges" apply under the same general conditions as specified for "person to person" calls.

"MESSENGER" CALLS

When a call is made on a "person to person" basis and a messenger is required to secure attendance of the designated person at a public pay station at the distant point, the "messenger call" rate applies.

This rate is the same as the "appointment" rate for the same distance, plus any charge for messenger service. The "messenger call" rate is computed on the day rate between the points involved, whether the call is made during the day or night, and the minimum charge is 20c.

Messenger charges incurred are to be paid even if desired conversation is not held.

No "messenger call" is accepted where the "station to station" rate is less than 10c.

"Report charges" apply under the same general conditions as specified for "person to person" calls.

STANDARD TOLL NIGHT RATES

The following reduced rates for toll service on a "station to station" basis only are effective:

8:30 p. m. to 12 midnight—about one-half of the "station to station" day rate.

12:00 midnight to 4:30 a. m.—about one-fourth of the "station to station" day rate.

For the purpose of applying night rates, the time of day at the point at which a "station to station" message originates is used.

The minimum night rate is 25c. Day rates apply on calls made at night when the "station to station" charge is less than the minimum night rate.

"COLLECT" CALLS

"Collect" calls are calls for which the charges are reversed; that is, are to be collected from the subscriber at the distant station at which the call is completed.

Such "collect" calls, or reversed charges are allowed only in connection with "person to person" calls.

EXAMPLE SHOWING HOW METHOD IS APPLIED

Assuming the air line distance between toll points to be more than 144 miles, but not more than 152 miles, the following rates for service under the various classes offered would apply:

	Initial Period
"Station to station" rate.....	\$1.00
Completed "person to person" rate.....	1.25
Completed "appointment" rate.....	1.50
Completed "messenger call" rate.....	1.50
Plus messenger charges.....	
Report charge.....	.25
Rate between 8:30 p. m. and 12 midnight, "station to station" service only.....	.50
Rate between 12 midnight and 4:30 a. m. "station to station" service only.....	.25

INDIANA BELL TELEPHONE COMPANY

E. T. BONDS, Manager.



The Newest of the New in Sweaters at \$10 to \$25

Sport costumes are incomplete without at least one of these new sweaters. A variety of each of the newest models are shown—surplice, middy slip-ons, and tuxedos. The colors are refreshing—peacock, black, turquoise, beige, American beauty, white, pink and purple.

Robertson Bros. Co.

Spring Wraps:— of Splendid Value

at Extraordinary Prices

\$35 to \$125

For women who require serviceable coats for spring, summer and fall, these are excellent. Good materials and conservative styles make them desirable for more than one season wear. The prices are much below those made regularly upon garments of their quality.

Materials—Camel's hair, Bolivia, tinseltone, velour and duvetyne.

Colors—Marine blue, beige, tobacco brown and other new shades.

A special showing of plaid motor wraps is featured.

Beautiful Waists for Spring

\$10 to \$25

Here are waists that represent the best of the season's offerings. Good quality of georgette, practical and delicate colorings emphasize their splendid value.

Suit Waists in Large Sizes

\$12.50 to \$25

These are handsome waists, especially becoming to large women. Their lines are straight and slender giving. Trimmings of self colored braid, yarn and floss embroidery give added style and individuality. There is becoming dignity in these garments. Colors—white, plum, navy and beige, black and white.

New Blouses in Flesh and White

\$10 to \$18.50

The fresh daintiness of these blouses enhances their desirability. They are soft and fluffy in their light colors, with long collars of net and lace or of self material with edgings of fine Valenciennes lace. Soft falling fullness and plaited ruffles are other pleasing details. Sleeves are short or long.

Silk Hosiery and Silk Underwear

Women's All Silk Hose, full fashioned, black and white only. At \$4.25.

Women's Silk Hose, full fashioned, with eight inch elastic top; black, white and colors. At \$2.50, \$3.50.

Women's drop stitch Hose, with mock seam mercerized top, in black only. At \$2.98.

Women's Silk Hose, with mock seam, elastic lisle top; black, brown, navy, piping rock. At \$2.25.

Women's Silk Hose, mock seam, black, white and colors. At \$1.50, \$2.00.

Women's Boot Silk Hose, full fashioned, white only. At \$1.35.

Vanity Fair Silk Underwear for Women

Women's Underwear, ankle length, pettibocker, double seat, in navy, grey and sand. At \$8.00.

Women's Bloomers, knee length, with double back. At \$6.00.

Women's Vests, with an extra four inches in length. Bodice top with hemstitched shoulder strap. At \$6.50.

Step-in Envelope Suit, ribbon trimmed. At \$6.50.

Women's Union Suits, reinforced and cut to stay closed, at \$7.50.



Pretty Straw Hats for Juniors

\$2.50

to

\$7.95

The petite charm of girlish faces is enhanced by these becoming hats of serviceable straw in white, black and colors. Poke bonnets and broad brimmed sailors are trimmed with bands and streamers of gros-grain ribbons. There are pretty shapes to suit all ages from five to twelve years.

Midsummer

Sport Hats

\$7.95

to

\$18.50

The charm of summer is portrayed in these pretty hats. The colors are new, as are the combinations of fabrics used—georgette, Batavia and panama cloth combined with straw. White Angora wool embroidery furnishes a pleasing touch. Special prices emphasize the value of these offerings.

Skolny Clothes for Boys

In inviting you to examine Skolny Clothes, we urge you to consider the prices in relation to quality—meaning style, fit, service.

Suits from \$18.50 up. Boys' exclusive store—Main floor, Jefferson blvd. entrance.

USE OUR MONEY 1%

Per month less than the legal rate. Loans made on Furniture, Pianos, Autos, Live Stock, Farming Implements, etc.; payments to suit your income, weekly, monthly or quarterly. If you have a loan with another company we will advance you money to pay them off. It is your benefit to save the difference.

DON'T PAY 3 1/4% PER MONTH FOR MONEY—SEE US FIRST.

WELFARE LOAN SOCIETY

Capital \$200,000.00.

219 South Main Street

Phone Main 698

(Member of American League of Welfare Loan Societies)

Read the Ads