

RENT A ROOM TO
HELP CITY GROW
INDUSTRY'S PLEA

Chamber of Commerce Sec-
onds Appeal for Living
Quarters.

"Aid South Bend in meeting the present housing situation, and at the same time aid yourself by adding to your income," is an appeal going out to every householder in the city. The appeal, which is being sent out by the industries of the community and the Chamber of Commerce does not ask that houses be built. Instead, it asks that present homes in the city be shared with men brought here to aid in the industrial expansion now going on. It is an appeal for rooms at a reasonable rental.

The appeal points out that unless some way is found in which to provide homes for men who come here to work in the various plants, the expansion plans will fail, and South Bend's many industrial advantages will be unavailing.

Rooms for Single Men.
Efforts are being made to erect a sufficient number of houses to care for the hundreds of families that will be brought to the city by the expansion and enlargement of the plants here, but the burden of the appeal is for rooms for the hundreds of single men who are unable to build houses who must have a place of abode in order to work here.

The appeal asks that South Bend citizens open their homes to these men, many of whom are young and who are just beginning their careers. Most of them are from good families and are well bred.

The industries and Chamber of Commerce want every family in the city that can possibly do so, to rent rooms to these young men. The families doing this are assured of a reasonable remuneration for their efforts to aid the city in meeting the housing problem. Each family that can spare a room for rental is asked to list it with the industrial plants or with the Chamber of Commerce, and in turn these institutions offer to send only roomers whose characters have been investigated and found to meet the approval of the Chamber of Commerce.

Instance of Profitability.
The families are asked not to charge an unreasonable rental for their rooms. An instance of where overcharging drove one man who would undoubtedly have become a substantial citizen of the community from the city is cited. The appeal recites how a man brought to the city here. He was successful in finding a house, but soon had to vacate the house because it had been sold. This potential citizen was prevented by circumstances from leaving the city at once. He was forced to seek accommodations, and finally succeeded in renting a furnished room in the home of one of the city's wealthy families. The rent charged for this room was \$25 a week, or \$100 a month. He occupied the furnished room for one month. Then he left South Bend for another city. He was an executive in a South Bend concern, well bred and public spirited, and he would have made South Bend his permanent home had he not been driven away by circumstances greatly mitigated by a room profiteer who did not need the money.

Many instances of a like nature are cited, but it is not believed by the city's industrial heads or the officials of the Chamber of Commerce that the great majority of South Bend families are inclined to take advantage of a deplorable situation to profiteer.

UNITED KINGDOM WILL
TAKE HOPS BY MAIL
FREE OF LICENSE

Hops may now be imported through the mails into the United Kingdom free of import license according to an announcement sent to the post office department by the London office.

An announcement coming from the postal administration of Canada advises that the limit of weight of single volumes of printed books in the mails exchanged between the United States and Canada is 10 pounds.

The local office also calls attention to the fact that mail for American army officers, members of United States commissions, embassies and relief organizations, as well as mail for those connected with the American Red Cross, Y. M. C. A., Knights of Columbus, and other welfare organizations, or addressed to other persons in Europe outside of the portion of Germany occupied by the American army, is subject to the international postage rates, conditions and classification and will not, therefore, be accepted for mailing at the United States domestic postage rates, nor under classification and conditions applicable to domestic mail.

Since the withdrawal of the American expeditionary forces from France and other countries in Europe, except Germany, United States domestic postage rates, conditions and classification are now applicable only to mail addressed to members of and persons directly connected with the American army of occupation in Germany.

KAISER KIN IS
FINED FOR ATTACK

Prince Joachim to Pay For
Leading Assault on
Frenchmen.

BERLIN, April 17. — Prince Joachim, relative of the former kaiser, was fined 1,800 marks at the conclusion of his trial for the Adlon hotel incident here today.

The prince heard the decision nonchalantly with his hands in his pockets.

Joachim was arrested after he had led a party of Germans which attacked two French officers in the restaurant of the Adlon hotel, in March. The French officers did not stand when the orchestra started playing a German national air.

Tickets on sale for the Minneapolis Symphony orchestra, May 11th, matinee and evening, at the South Bend Conservatory, Toepp Bldg. Phone, Lincoln 2317 2627-18

"Clarence" With
Capable Cast is
Splendid Comedy

Booth Tarkington's comedy success, "Clarence," which has been delighting crowds in Chicago and New York simultaneously gave pleasure to two audiences at the Oliver Saturday. The matinee performance which was the first to be given here for some time, the others having been prevented by railroad delays, drew a capacity crowd.

If current reports are accepted, South Bend lost nothing by seeing the Chicago company. Indeed, report need not be relied upon, for those who saw Saturday's offering are prepared to vouch for the excellence of the cast.

There was Robert Adams, for instance, as "Clarence," an engaging and amusing chap in a unique role into which he put himself with evident enjoyment; and Gregory Kelly—many remember him in "Seven-teen"—duplicating his success in

the former Tarkington piece in a somewhat similar character; and Ruth Gordon playing alongside him in a character equally exasperating and competent support for all.

George C. Tyler has provided an excellent production and there is no doubt of Tarkington's sure-handedness in evolving a real American comedy with an artistic precision which runs true to life in all particulars. One "Clarence" is worth a hundred bedroom farces and somehow the producers seem to be coming round to this view.

SOUTH BEND BOY
MAKES GOOD DESPITE
FOOTBALL INJURIES

The current issue of the Saturday Evening Post carries an advertisement that should furnish food for thought and inspiration for every boy in this community.

Under the heading of "Cash Your Spare Hours," the Post relates how Russell E. Shirk of Indiana, through the medium of hustle, has added \$50 a month to his income.

There is more to the story, however, than appears in the advertisement. The facts of the case are that Russell E. Shirk, a South Bend

boy, living at 319 N. St. Louis Blvd., has added more than \$50 a month to his salary, despite the fact that he is crippled, the result of injuries received while playing football on the South Bend high school team.

For more than a year he was forced to go about in a wheel chair, and it was while thus handicapped that he first started his career of selling magazines. By dint of hard work and constant plugging he has built up a big clientele, and today the income from the publications he represents amounts to a tidy sum each month.

It is a tangible example of what pluck and hustle will do, and such recognition as has been accorded the South Bend boy is gratifying to the entire city.

Try NEWS-TIMES Want Ads.

FOUR KILLED WHEN
BILLIARD HALL FALLS

WOLVERHAMPTON, England, April 17.—Four persons were killed, 18 injured severely and more than 100 buried in wreckage when a billiard hall collapsed here last night. Workers continued searching in the ruins today. It was feared they might find additional dead.

THE EQUITABLE

LIFE ASSURANCE SOCIETY OF THE U. S.
120 Broadway, New York

The year 1919 was the most productive in the Equitable's history.

NEW INSURANCE issued and paid for in 1919.....\$454,839,437
An increase of \$181,615,878 over the previous year.

During the year the Two Billion mark
in Outstanding Insurance was passed.

OUTSTANDING INSURANCE, Dec. 31, 1919.....\$2,270,903,931
An increase of \$346,365,353 over the previous year.

PAID TO POLICYHOLDERS IN 1919.....\$73,990,176
97% of the domestic death claims paid in 1919 were
settled within one day after receipt of proofs of death.

PAID POLICYHOLDERS Since Organization.....\$1,302,291,677

ASSETS, December 31, 1919.....\$599,423,919

INSURANCE RESERVE.....\$493,390,577

Other Liabilities.....17,418,765 510,809,342

SURPLUS RESERVES:

For distribution to policyholders in
1920.....17,191,084

Awaiting apportionment on de-
ferred dividend policies.....54,300,085

For Contingencies.....17,123,408 \$88,614,577

\$599,423,919

The above figures are from the 60th Annual Statement
which will be sent to any address on request.

The Equitable issues all standard forms of life insurance and annuities, including the following:

A LIFE INCOME POLICY

under which the beneficiary receives a monthly income for life—
the safest and the best kind of insurance for family protection.

A GROUP POLICY

by which an employer protects the families of his employees.

A CORPORATE POLICY

to safeguard business interests.

A CONVERTIBLE POLICY

which can be modified from time to time to meet changing conditions.

AN INCOME BOND

to provide for the declining years of the purchaser.

AN ENDOWMENT ANNUITY POLICY

maturing at age 65, providing thereafter an income for life.

AN EDUCATIONAL POLICY

providing a fund for the college training of a son or daughter.

A CASH REFUND LIFE ANNUITY

under which the total return may be more, but
can never be less, than the purchase price.

The following provisions will be added to the policy when desired:

1. In case of total and permanent disability:

(a) Premiums will cease. (b) The Insured will receive a monthly

income. (c) The beneficiary will receive full face of policy at maturity.

2. Double the face of the policy will be paid in case of death from Accident.

A non-cancelable Accident and Health policy completes the circle of Equitable protection.

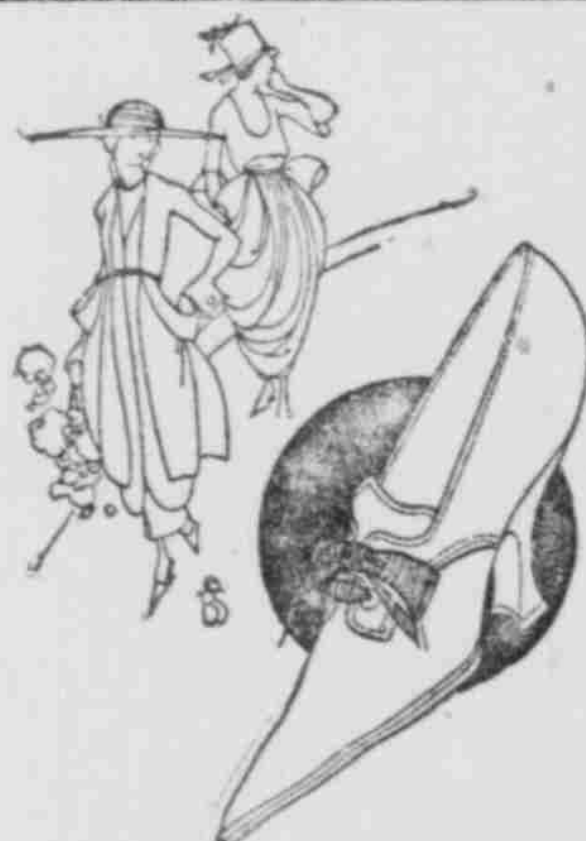
W. A. DAY, President.

The EQUITABLE is represented in St. Joseph, Laporte and Marshall counties by JOHN DE HAVEN as district manager with agents working in the field. A request to explain either of the policies named in the above statement will impose no obligation. People are today buying good life insurance for protection and investment and the EQUITABLE offers both, together with a service unequalled.

JOHN DE HAVEN, District Manager.

Suite 520 J. M. S. Bldg.

South Bend



Individuality
IN FOOTWEAR
IS OUR AIM

To attain distinction, yet retain comfort, is no simple problem in shoe making. Such is the accomplishment of these two models illustrated. Note the long slender lines of this oxford or ribbon tie in light turned soles and beautiful Louis heels.

In Black Kid or Patent, Black and
Brown, Ooze Calf, Suede or Buck.

Porter & Strom
UNIQUE BOOTERY

131 So. Main Street.



Fine French Kid Gloves
The new self-sewn or contrasting stitched,
in black, gray, brown and beaver, at \$3.50,
\$3.75, \$4.00.
Kayser's Silk Gloves from \$1.00 to \$2.25.



Beautiful Mesh Bags
The new styles have arrived in our jewelry
section.
Gold and Silver Bags with wishbone tops
and fish scale mesh. These are specially priced
at \$2.95 up to \$9.00.

Robertson Bros. Co.

Lovely Wraps and
Smart Coats
of Excellence
\$35.00 to \$125.00

These Coats are a distinct addition to spring ward-
robes. They contribute definite smartness to tailored
sport clothes and filmy frocks, fulfilling the require-
ment for additional warmth and protection.

Graceful Wraps
Luxurious Materials

Draped collars and sleeves, platings, and slender-
giving lines give a graceful air to these garments. The
materials are soft bolivia cloth, wool velvety and
silk. The linings are soft silks. Elegance is the re-
sult.

Sport Coats Favor Tailored Lines

Sport Coats feature mannish tailoring, narrow
shoulders, straight collars, belts and pockets. The
smartest models are three-quarters and shorter lengths.
They are made of camel's hair, silvertone and crystal
cloth.

"The Children's Shop"

Stylish Coats for the Young Miss
\$12.50 to \$35.00

Appropriately clad in one of these splendid
coats, the world is met with pleasing poise.
They combine girlishness with smart style.
The materials are polo cloths, silvertones, En-
glish tweeds, and wool jerseys. The colors are
blue, tan and brown.

"Better Shoes—Better Children."

Charming Hats
for Spring

\$15.00 to \$25.00

These graceful Picture
Hats were patterned by the
best designers of the coun-
try. Broad brims of maline
and horsehair and simplicity
of trimming suggest youth-
fulness. They are especially
picturesque worn with the
new frocks of taffeta and
georgette, or with graceful
wraps.

Springlike
Blouses

\$12.96 to \$25.00

Soft and dainty in ma-
terials and color combina-
tions, these blouses are de-
lightful. They embody the
novel details introduced in
spring fashion,—platings
and insertions of filet lace,
bits of hand embroidery,
slip-on overblouses of
georgette in brilliant colors,
yarn trimmed. Each blouse
has a prettiness of its own.

Jewelers—Silversmiths—Diamond Merchants



All
That
is
Latest
and
Best
in
Rings

Pearls

A
Large
Assortment
of
Wedding
Gifts

STRINGS of pearls are worn by dis-
criminating women on all oc-
casions. Today they are a necessary
part of mi-lady's make-up. Their bril-
liant lustre and misty opalescence lend
a subtle charm to her appearance.

To meet popular demand for depend-
able pearls, we have selected for our
stock the finer grades in varying tints
and lengths.

When you come here to examine them
we know you'll be pleasantly sur-
prised to find pearls of rare quality at
very moderate cost.

There is no more appropriate gift
than lasting pearls. For gift purposes
we have them cased in attractive boxes.

CLAUER'S

Exclusive But Not Expensive

I-C-E

Railroad strikes, coal
strikes, the failure of cars
to arrive on time have no
terrors for us. We make
our own ice, and we
carry a big supply in cold
storage at all times.

You will be safe in the
warmest weather if you
are a customer of South
Bend's Big Ice Company.

ARTIFICIAL ICE
COMPANY

Main 2221, 395;
Lincoln 6123, 5395.

MONEY

ADVANCED

ON LIVE STOCK
VEHICLES
PIANOS
FURNITURE

Dollars Do Double Duty.

SECURITY
LOAN CO.
11100 P. O. BOX
Phone Main 1814.

FEDERAL
MOTOR TRUCKS

1 to 5 tons

Hagedorn & Webster

DISTRIBUTORS

216-22 E. JEFFERSON BLVD.