

STOCK BROKERS PAY LITTLE HEED TO RAIL STRIKE

Professional Interests Believe
Walkout is On Wane in
America.

By Associated Press:

NEW YORK, April 13.—Traders and professional interests almost as a whole, seemed disposed to pay less attention to the railroad strike, Tuesday, basing their more confident attitude on the belief that the strike is on the wane.

The stock market was strong only on the spot, however, food shares, secondary steels, equipments, shipbuilding and miscellaneous specialties making variable gains, while erstwhile leaders in the industrial division were irregular and occasionally heavy.

Conditions Unaltered.

Conditions in the money market were not materially altered, call loans opening at seven percent and advancing to 12 on the final day of the demand for the final day.

Foreign exchange rallied from its recent continuous depression due chiefly to the belief, to reduced offerings.

Stocks were at their best in the last hour when oil of the Texas and Mexican groups were run up suddenly at the expense of the shorts.

Sales amounted to 1,059,000 shares. Bonds at no time shared in the strength of the stock market, that division suffering further impairment from the weakness of Liberty and Victory issues as well as lower tendencies for rails. Total sales (par value aggregated \$13,375,000.

Old U. S. two's rose three-eighths on call and Panama three's declined one point on call; others unchanged on call.

South Bend Markets
HAY, STRAW AND FEED.
(Corrected Daily by the Warner Bros. Seed Store, 226 S. Michigan St.)

NEW HAY—Paying \$30, selling \$34.
STRAW—Paying \$12, selling \$14@16 or \$50 bale.
OATS—Paying \$20, selling \$19@21.10.
NEW CORN—Paying \$1.40, selling \$1.75 to \$1.80.
CLOVER SEED—Paying \$32 bu., selling \$36@38 bu.

ALFALFA (Northern grown)—\$30.00.
GRAIN AND FEED.
(Corrected Daily by O. W. Burrell, Star Mill, Hydraulic Ave.)

SHELL CORN—Paying \$1.50.
OATS—Paying \$1.00, selling \$1.00@1.20.
BRAN—Selling \$2.50 hundred.
MIDDLINGS—Selling \$3.25 hundred.
CHOPPED FEED—Selling \$3.50 per cwt.
SCRATCH FEED—Selling \$4.25 per cwt.
WHEAT—Paying \$2.50.
SEEDS.
(Corrected Daily by Warner Bros. Seed Store, 226 S. Michigan St.)

COW PEAS—\$7.00 bushel.
JAPANESE MUNG—\$4.00 to \$5.00.
RED CLOVER—\$7.00.
TIMOTHY—\$7.50.
SPELTS—\$4.10 to \$4.20.
ROUDAN GRASS \$18 per hundred.
ALSIKE—\$25.50 to \$40.00.
SUNFLOWERS—20c pound.
WINTER OR HARRY BETCH—\$27.00 per bushel.
BLUE GRASS—\$5.00.
SWEET CLOVER—\$25.00.
MAMMOTH CLOVER—\$30.00.
WHITE CLOVER—\$25.00.
SWEET WHITE CLOVER—\$35.
FIELD PEAS—\$3.00.
TIMOTHY & ALSIKE, mixed—\$10 bu.
RAPE SEED (Dwarf Essex)—\$8.00 bu.
LAWN GRASS—\$50c lb.
SOYA BEANS (1 to 50)—\$10 bu.
BARLEY—\$2.25 bushel.
SEED CORN—\$4.50 bushel.

LIVE STOCK.
(Corrected Daily by Major Bros., S. L. Janney, 121 S. Michigan St.)

HEAVY FAT STEERS—Fair to good, 100 lbs.; prime, 120 lbs.
HOGS—150 to 200 lbs., 14c; 150 to 175 lbs., 14½c; 175 to 200 lbs., 15c; 200 lb. and over, 15½c.

PRODUCE MARKET.
(Corrected Daily by the Brotherhood Grocers, 230 N. Main St.)
BUTTER AND EGGS—Creamery butter, paying 60c pound, selling 70c pound; eggs, paying 42c dozen, selling 45c dozen.
FRUITS AND VEGETABLES—Fruit, California naval oranges, one per dozen, selling \$8 cwt.; new cabbage, selling 10c pound.
MAPLE SYRUP—Selling \$3.50 gallon.

POULTRY AND MEATS.
(Corrected Daily by Jimmie's Market, 128 E. Jefferson Blvd.)
BEEF—Roast, 200 lbs.; boiling, 20c; round steak, 40c; sirloin, 60c; porterhouse, 70c.
PORK LOIN—35c.
LARD—30c@35c.
CHICKENS—Dressed, 50c.

HIDES AND TALLOW.
(Corrected Today by S. W. Pippman, 210 N. Main St.)
HIDES—15c-20c; calfskins, 30c@50c; rendered tallow, 50c lb.; rough tallow, 40c lb.; beef wax, 25c@35c.

**CORN PRICE AVERAGE
LOWERS ON EXCHANGE**

By Associated Press:

CHICAGO, April 13.—Corn averaged lower in price Tuesday with traders holding off on both sides of the market awaiting developments in the railway strike. The close was unsettled, half cent lower net to ½ advance, May 1.66½ to 1.66½ and July 1.66 to 1.66½. Oats finished ½ down to ½ up and provisions unchanged to ½ up.

Weakness in the corn market was generally ascribed to lack of support rather than to aggressiveness on the part of sellers, bearing in mind the fact that the west gave promise to recovering from the railroad strike earlier than the east. Toward the last, however, current talk of a good export demand for wheat, rye and corn goods led to rallies in the corn market. Wheat commanded \$3 track New York, the highest price on the crop. Oats merely duplicated the changes in corn.

Packers were sellers of provisions, but on the ensuing break turned to the buying side. Lard meanwhile touched the lowest prices yet this season.

CHICAGO GRAIN AND PROVISION.
CHICAGO, April 13.—
Opening High Low Close
CORN—May 1.66 1.67 1.64½ 1.66½
July 1.66½ 1.66½ 1.64½ 1.66
Sept. 1.64½ 1.64½ 1.63 1.64½
OATS—May 94½ 95 93½ 95
July 80½ 80½ 84½ 85½
PORK—May 36.50 37.20 36.50 36.50
LARD—May 19.05 19.05 19.20 19.43
July 20.00 20.45 19.52 20.20
RIBS—May 18.05 18.25 18.05 18.22
July 18.97 18.75 18.07 18.75

CLOSING PRICES NEW YORK STOCKS

NEW YORK, April 13.—Closing prices on the stock exchange today were:

A. T. and S. F.	81½
American Beet Sugar	101½
American Drug Syndicate	13½
American Can	47½
Allis Chalmers	43
American Car Foundry	142½
American Locomotive	105
Anaconda Copper	62
American Smelt and Rfg. Co.	87½
A. G. W.	168½
T. and T.	96½
Baldwin Locomotive	139½
B. and O.	33½
Bethlehem Steel "B"	87½
Butte and Superior	26½
B. R. T.	15½
Canadian Pacific	121½
Chili Copper	18½
Cuban Cane Sugar	57½
California Petroleum	38½
Central Leather	85½
C. and O.	55
Colo. Fuel and Iron	39
Corn Products	104½
Crescent Steel	207
Chino Copper	36½
Enamel	77½
Erle Common	13½
Great Northern Ore	37½
Great Northern Preferred	77
General Motors	356½
Hide and Leather Common	24½
Hide and Leather Preferred	114½
Illinois Central	88½
Industrial Alcohol	84½
International Nickel	22
International Paper	84
Inspiration Copper	55½
Kennecott Copper	31½
Lackawanna Steel	79
Lehigh Valley	44
Mexican Petroleum	295
Miami Copper	24
Marine Petroleum	37
Marine Preferred	86½
Missouri Pacific	26½
Maxwell Common	37
Maxwell 1st Pfd.	59½
Midvale Steel	119½
Nevada Copper	14½
New Haven	31½
N. Y. C.	71½
Northern Pacific	77½
Ohio Cities Gas	42½
Pan-American Petroleum	112½
Peoples Gas	26½
Pennsylvania	61½
Pittsburgh Coal	19
Ray Consolidated Copper	83½
Reading	111½
Republic Steel	24½
Rock Island	74½
Rock Island A	74½
Rock Island B	62½
Rubber	111½
Rumely Common	43
Rumely Pfd.	69½
Southern Pacific	98½
Southern Railway	22½
St. Paul Common	26½
St. Paul Pfd.	42
Studebaker Common	121½
Saxon	17½
Sinclair Oil	42
Sugar	14½
Tobacco Products	73½
Vanadium	87½
Texas Oil	208
Texas and Pacific	41½
Union Pacific	119
U. S. Steel Common	105½
U. S. Steel Pfd.	117½
U. S. Food Corp.	68½
Utah Copper	75
Virginia-Carolina Chemical	78
Wabash A	26
White Motors	65
Willys Overland	24½
Wool	13½
Westinghouse	82
Liberty bonds—3½ percent—95-100; first 4½—90.50; second 4½—87-90; first 4½—90.30; second 4½—87.50; third 4½—91.70; fourth 4½—87.82; fifth 4½—97.10.	

South Bend Markets
HAY, STRAW AND FEED.
(Corrected Daily by the Warner Bros. Seed Store, 226 S. Michigan St.)

NEW HAY—Paying \$30, selling \$34.
STRAW—Paying \$12, selling \$14@16 or \$50 bale.
OATS—Paying \$20, selling \$19@21.10.
NEW CORN—Paying \$1.40, selling \$1.75 to \$1.80.
CLOVER SEED—Paying \$32 bu., selling \$36@38 bu.

ALFALFA (Northern grown)—\$30.00.
GRAIN AND FEED.
(Corrected Daily by O. W. Burrell, Star Mill, Hydraulic Ave.)

SHELL CORN—Paying \$1.50.
OATS—Paying \$1.00, selling \$1.00@1.20.
BRAN—Selling \$2.50 hundred.
MIDDLINGS—Selling \$3.25 hundred.
CHOPPED FEED—Selling \$3.50 per cwt.
SCRATCH FEED—Selling \$4.25 per cwt.
WHEAT—Paying \$2.50.
SEEDS.
(Corrected Daily by Warner Bros. Seed Store, 226 S. Michigan St.)

COW PEAS—\$7.00 bushel.
JAPANESE MUNG—\$4.00 to \$5.00.
RED CLOVER—\$7.00.
TIMOTHY—\$7.50.
SPELTS—\$4.10 to \$4.20.
ROUDAN GRASS \$18 per hundred.
ALSIKE—\$25.50 to \$40.00.
SUNFLOWERS—20c pound.
WINTER OR HARRY BETCH—\$27.00 per bushel.
BLUE GRASS—\$5.00.
SWEET CLOVER—\$25.00.
MAMMOTH CLOVER—\$30.00.
WHITE CLOVER—\$25.00.
SWEET WHITE CLOVER—\$35.
FIELD PEAS—\$3.00.
TIMOTHY & ALSIKE, mixed—\$10 bu.
RAPE SEED (Dwarf Essex)—\$8.00 bu.
LAWN GRASS—\$50c lb.
SOYA BEANS (1 to 50)—\$10 bu.
BARLEY—\$2.25 bushel.
SEED CORN—\$4.50 bushel.

LIVE STOCK.
(Corrected Daily by Major Bros., S. L. Janney, 121 S. Michigan St.)

HEAVY FAT STEERS—Fair to good, 100 lbs.; prime, 120 lbs.
HOGS—150 to 200 lbs., 14c; 150 to 175 lbs., 14½c; 175 to 200 lbs., 15c; 200 lb. and over, 15½c.

PRODUCE MARKET.
(Corrected Daily by the Brotherhood Grocers, 230 N. Main St.)
BUTTER AND EGGS—Creamery butter, paying 60c pound, selling 70c pound; eggs, paying 42c dozen, selling 45c dozen.
FRUITS AND VEGETABLES—Fruit, California naval oranges, one per dozen, selling \$8 cwt.; new cabbage, selling 10c pound.
MAPLE SYRUP—Selling \$3.50 gallon.

POULTRY AND MEATS.
(Corrected Daily by Jimmie's Market, 128 E. Jefferson Blvd.)
BEEF—Roast, 200 lbs.; boiling, 20c; round steak, 40c; sirloin, 60c; porterhouse, 70c.
PORK LOIN—35c.
LARD—30c@35c.
CHICKENS—Dressed, 50c.

HIDES AND TALLOW.
(Corrected Today by S. W. Pippman, 210 N. Main St.)
HIDES—15c-20c; calfskins, 30c@50c; rendered tallow, 50c lb.; rough tallow, 40c lb.; beef wax, 25c@35c.

**CORN PRICE AVERAGE
LOWERS ON EXCHANGE**

By Associated Press:

CHICAGO, April 13.—Corn averaged lower in price Tuesday with traders holding off on both sides of the market awaiting developments in the railway strike. The close was unsettled, half cent lower net to ½ advance, May 1.66½ to 1.66½ and July 1.66 to 1.66½. Oats finished ½ down to ½ up and provisions unchanged to ½ up.

Weakness in the corn market was generally ascribed to lack of support rather than to aggressiveness on the part of sellers, bearing in mind the fact that the west gave promise to recovering from the railroad strike earlier than the east. Toward the last, however, current talk of a good export demand for wheat, rye and corn goods led to rallies in the corn market. Wheat commanded \$3 track New York, the highest price on the crop. Oats merely duplicated the changes in corn.

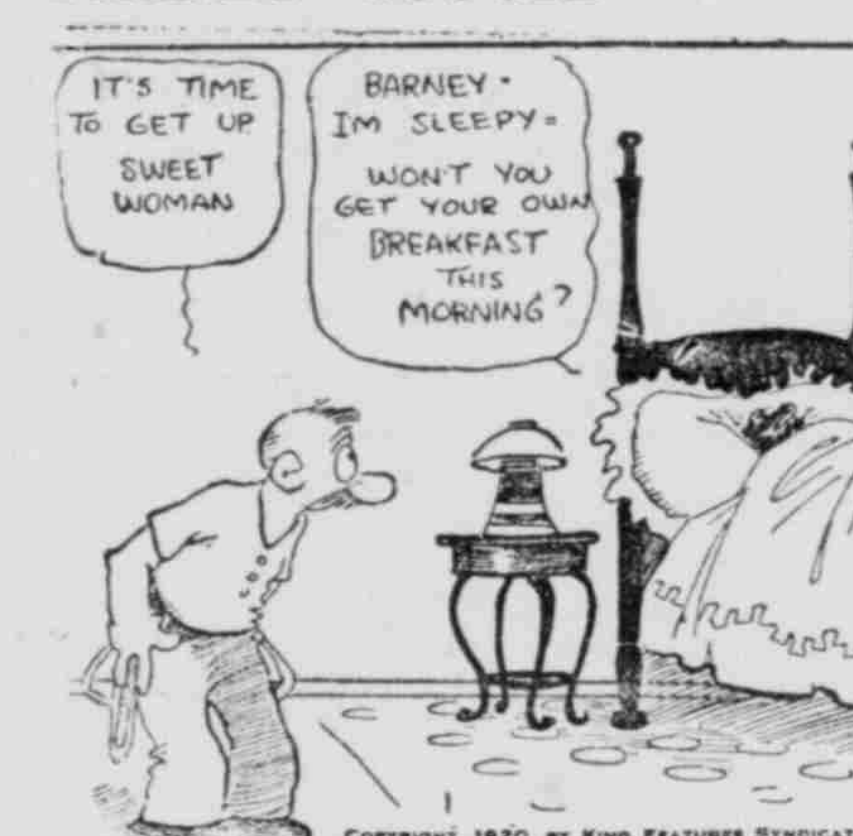
Packers were sellers of provisions, but on the ensuing break turned to the buying side. Lard meanwhile touched the lowest prices yet this season.

CHICAGO GRAIN AND PROVISION.
CHICAGO, April 13.—
Opening High Low Close
CORN—May 1.66 1.67 1.64½ 1.66½
July 1.66½ 1.66½ 1.64½ 1.66
Sept. 1.64½ 1.64½ 1.63 1.64½
OATS—May 94½ 95 93½ 95
July 80½ 80½ 84½ 85½
PORK—May 36.50 37.20 36.50 36.50
LARD—May 19.05 19.05 19.20 19.43
July 20.00 20.45 19.52 20.20
RIBS—May 18.05 18.25 18.05 18.22
July 18.97 18.75 18.07 18.75

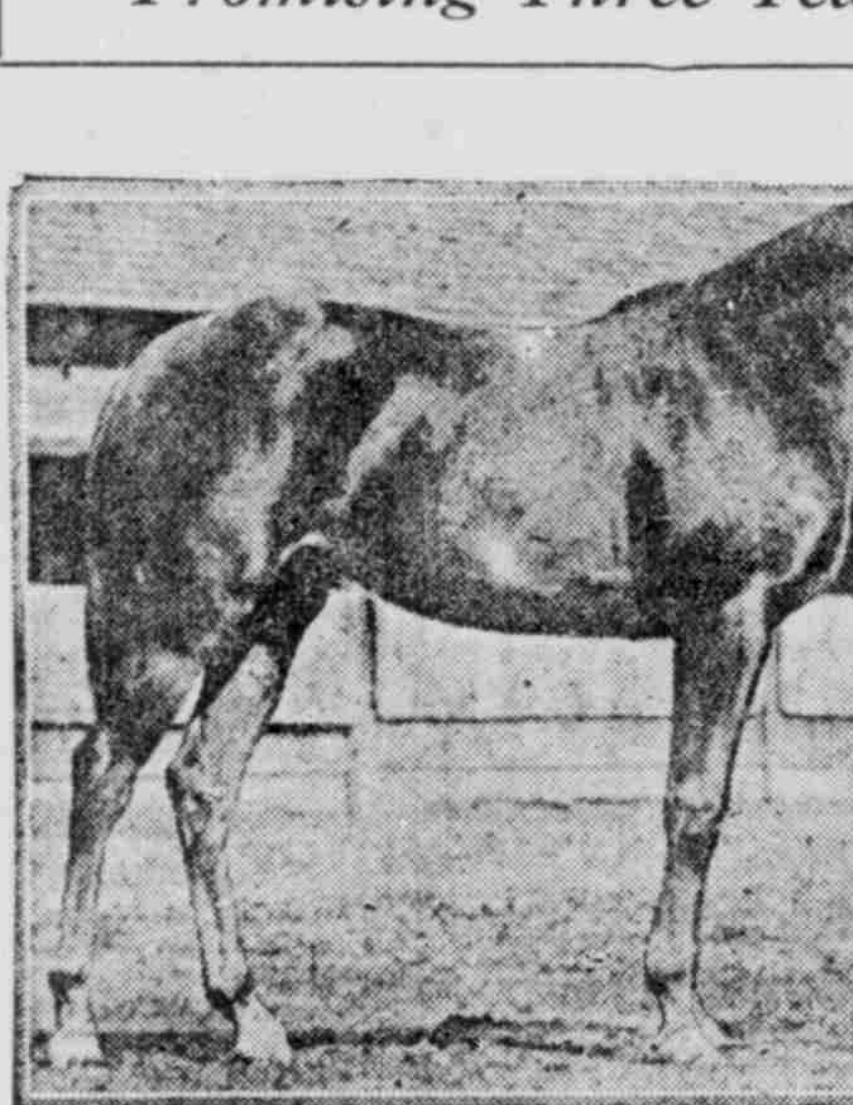
THAT SON IN LAW OF PA'S



BARNEY GOOGLE



Promising Three-Year Old



Walter J. Salmon's crack three-year-old Hobey Baker, by Celt-Augusta Victoria, started but three times as a two-year-old and made good by winning twice and getting second in his start. Unquestionably his best race was seen in the Eastern Shore Stakes at Harve de Grace, Sept. 20, last year, when he was beaten a neck by the admitted champion filly of the year, Constantine. The winning portion of the Celt colt for these three races was \$3,500, and in view of the fact that he has wintered exceedingly well it is his owner's intention to have him take a crack at all the stars of the season to come. After the Kentucky Derby it is Mr. Salmon's intention to have Gene Wayland prepare him for the Preakness, the Maryland feature, at a mile and an eighth, which carries with it a prize of more than \$25,000 to the winner.

and steady; Yorkers, \$18.00@15.25; pigs, \$17.00@17.25; mixed, \$18.00@18.25; heavy, \$17.00@17.25; roughs, \$13.00@14.00; stags, \$8.00@10.00.

CHICAGO CASH GRAIN.
CHICAGO, April 13.—CORN—No. 2 yellow, \$1.08; No. 3 yellow, \$1.07; No. 2 mixed, \$1.08; No. 3 mixed, \$1.06½; No. 4 mixed, \$1.05½; No. 2 white, \$1.08; No. 3 white, \$1.06½@1.08½.
OATS—No. 3 white, 97½@98c; No. 4 white, 97½c.
BARLEY—\$1.45@1.61.
TIMOTHY—\$9.00@12.00.
CLOVER—\$40.00@55.00.

The tulip tree is the sole remaining representative of a flora type of which 17 district fossils have been found.

The banana is the staple crop of Panama.



WEAR ARMY CLOTHES AND BEAT OLD H. C. L.



CONCORDIA, Kan., April 12.—In an effort to beat the high cost of living, high school boys here have decided to wear work shoes, work shirts and khaki trousers. The student council voted recently that boys were as guilty as girls when it came to extravagant dress.

Resisting the charge, the boys decided to adopt the "simple" clothes.

CLASSIFIED ADVERTISEMENTS

LEGAL NOTICES.

Estate of Karl Bozek:

NOTICE OF FINAL ACCOUNT.

By direction of American Trust Co., administrator of the estate of Karl Bozek, late of St. Joseph county, in the state of Indiana, deceased.

Notice is hereby given to the heirs, legatees and devisees of said decedent, and all other persons interested in said estate, that said administrator has filed in this court his account and vouchers for the final settlement of said estate, and they are therefore hereby required to be and appear in said court on the 6th day of May, 1920, when the same will be heard and make proof of their heirship, or claim to any part of said estate, and show cause if any there be, why said account and vouchers should not be approved.

Witness, the Clerk and the Seal of the St. Joseph Circuit court at South Bend, Ind., 10th day of April, 1920.
WILBUR M. WARNER, Clerk.
BERNARD L. ROERSTMAN, Dep. Jones & Oenichin, atty. for estate.
April 13-20.

CHICAGO CASH GRAIN.
CHICAGO, April 13.—CORN—No. 2 yellow, \$1.08; No. 3 yellow, \$1.07; No. 2 mixed, \$1.08; No. 3 mixed, \$1.06½; No. 4 mixed, \$1.05½; No. 2 white, \$1.08; No. 3 white, \$1.06½@1.08½.
OATS—No. 3 white, 97½@98c; No. 4 white, 97½c.
BARLEY—\$1.45@1.61.
TIMOTHY—\$9.00@12.00.
CLOVER—\$40.00@55.00.

The tulip tree is the sole remaining representative of a flora type of which 17 district fossils have been found.

The banana is the staple crop of Panama.

The banana is the staple crop of Panama.

The banana is the staple crop of Panama.

The banana is the staple crop of Panama.

The banana is the staple crop of Panama.

The banana is the staple crop of Panama.

The banana is the staple crop of Panama.

The banana is the staple crop of Panama.

The banana is the staple crop of Panama.

The banana is the staple crop of Panama.

The banana is the staple crop of Panama.

The banana is the staple crop of Panama.

The banana is the staple crop of Panama.

The banana is the staple crop of Panama.

The banana is the staple crop of Panama.

(Copyright, 1920, by Newspaper Features Service, Inc.)

Looks like Pa's supplying some of the material



Barney's cured of being cook to himself



Barney's cured of being cook to himself



Walter J. Salmon's crack three-year-old Hobey Baker, by Celt-Augusta Victoria, started but three times as a two-year-old and made good by winning twice and getting second in his start. Unquestionably his best race was seen in the Eastern Shore Stakes at Harve de Grace, Sept. 20, last year, when he was beaten a neck by the admitted champion filly of the year, Constantine. The winning portion of the Celt colt for these three races was \$3,500, and in view of the fact that he has wintered exceedingly well it is his owner's intention to have him take a crack at all the stars of the season to come. After the Kentucky Derby it is Mr. Salmon's intention to have Gene Wayland prepare him for the Preakness, the Maryland feature, at a mile and an eighth, which carries with it a prize of more than \$25,000 to the winner.

and steady; Yorkers, \$18.00@15.25; pigs, \$17.00@17.25; mixed, \$18.00@18.25; heavy, \$17.00@17.25; roughs, \$13.00@14.00; stags, \$8.00@10.00.

CHICAGO CASH GRAIN.
CHICAGO, April 13.—CORN—No. 2 yellow, \$1.08; No. 3 yellow, \$1.07; No. 2 mixed, \$1.08; No. 3 mixed, \$1.06½; No. 4 mixed, \$1.05½; No. 2 white, \$1.08; No. 3 white, \$1.06½@1.08½.
OATS—No. 3 white, 97½@98c; No. 4 white, 97½c.
BARLEY—\$1.45@1.61.
TIMOTHY—\$9.00@12.00.
CLOVER—\$40.00@55.00.

The tulip tree is the sole remaining representative of a flora type of which 17 district fossils have been found.

The banana is the staple crop of Panama.

The banana is the staple crop of Panama.

The banana is the staple crop of Panama.

The banana is the staple crop of Panama.

The banana is the staple crop of Panama.

The banana is the staple crop of Panama.

The banana is the staple crop of Panama.

The banana is the staple crop of Panama.

The banana is the staple crop of Panama.

The banana is the staple crop of Panama.

The banana is the staple crop of Panama.

The banana is the staple crop of Panama.

The banana is the staple crop of Panama.

The banana is the staple crop of Panama.



Barney's cured of being cook to himself



Barney's cured of being cook to himself

