

## FRENCH TRICOLOR IS IDEAL FLAG

Englishman Pays Tribute to the Stars and Stripes as National Emblem.

A recent tribute by an Englishman to the Stars and Stripes and the French tricolor as being the "ideal national flags" elicited from the National Geographic society a bulletin concerning the French emblem.

The origin of the American flag was described in a previous bulletin.

The story of the tricolor, contained in a communication to the society, follows:

"The familiar and inspiring tricolor of France dates from the year that gave the United States its constitution—1789. The best authorities are doubtful as to the true story of its origin, but there are three principal theories as to the derivation of its combination of colors.

"The first of these, and the most authentic, is that after the taking of the bastille, when Lafayette had been appointed by acclamation commander-in-chief of the national guard, he devised for the guard a new cockade made of the white of the royal family and of the colors of Paris time out of mind, which were and continue to red and blue. From this cockade, most historians believe, came the French national flag.

Links Historic Flags.

"Another version links the tricolor with the three historic flags of France—the blue of the Chape de Martin, the red of the oriflamme, and the white of the Bourbons. It will be recalled that the Chape de Martin was supposed to be the original cloak which St. Martin divided with a beggar at Amiens, which act was followed by a vision of Christ making known to the angels this deed of charity. The chape was in the keeping of the monks of Marmoutier, and Clovis carried it when he conquered Alaric, while Charlemagne bore it at Narbonne. When the kings of France transferred the seat of government to Paris, the local saint, St. Denis, was held in high honor, and gradually the plain scarlet banner, known as the oriflamme, and kept in the abbey church, supplanted the blue of St. Martin as the national colors. The oriflamme appeared for the last time at the battle of Agincourt, in 1415. The Huguenot party in France adopted the white flag, and when Henry III, himself a Protestant, came to the

throne he made it the royal ensign. His successor, Henry IV., the first king of the Bourbons, adopted it as the national flag.

Copied From Shield.

"The third account of the tricolor's origin is that it is copied from the shield of the Orleans family, as it appeared after Philippe Egalite knocked off the fleur de lis. During the first and second empires, the tricolor became the imperial standard, but in the center of the white stripe was placed the eagle, while all three stripes were richly powdered with the golden bees of the Napoleon family. The flag of France, in 1914, waved over territory nearly one and a half times as large as that covered by the United States. French colonies have a total of approximately 4,500,000 square miles. Among the flags of the earth, before the war, only the union Jack and the banner of Russia floated over more territory.

"The flag of the president of France consists of the French tricolor, with the initials of the president in gold on the white stripe."

Try NEWS-TIMES Want Ad

## Retail Credit Men Favor Changed Bankruptcy Laws

ST. PAUL, Minn., Aug. 22.—Improved national bankruptcy laws making it more difficult for an individual to live beyond his means and then clearing the slate by filing a voluntary bankruptcy petition, was urged Thursday at the convention of Retail Credit's National association.

Franklin Blackstone, Pittsburg, offered a resolution to existing federal bankruptcy laws. His measure is aimed to cover two new features: A lower cost of administering bankruptcy cases and the protection of the retailer against individual bankruptcy.

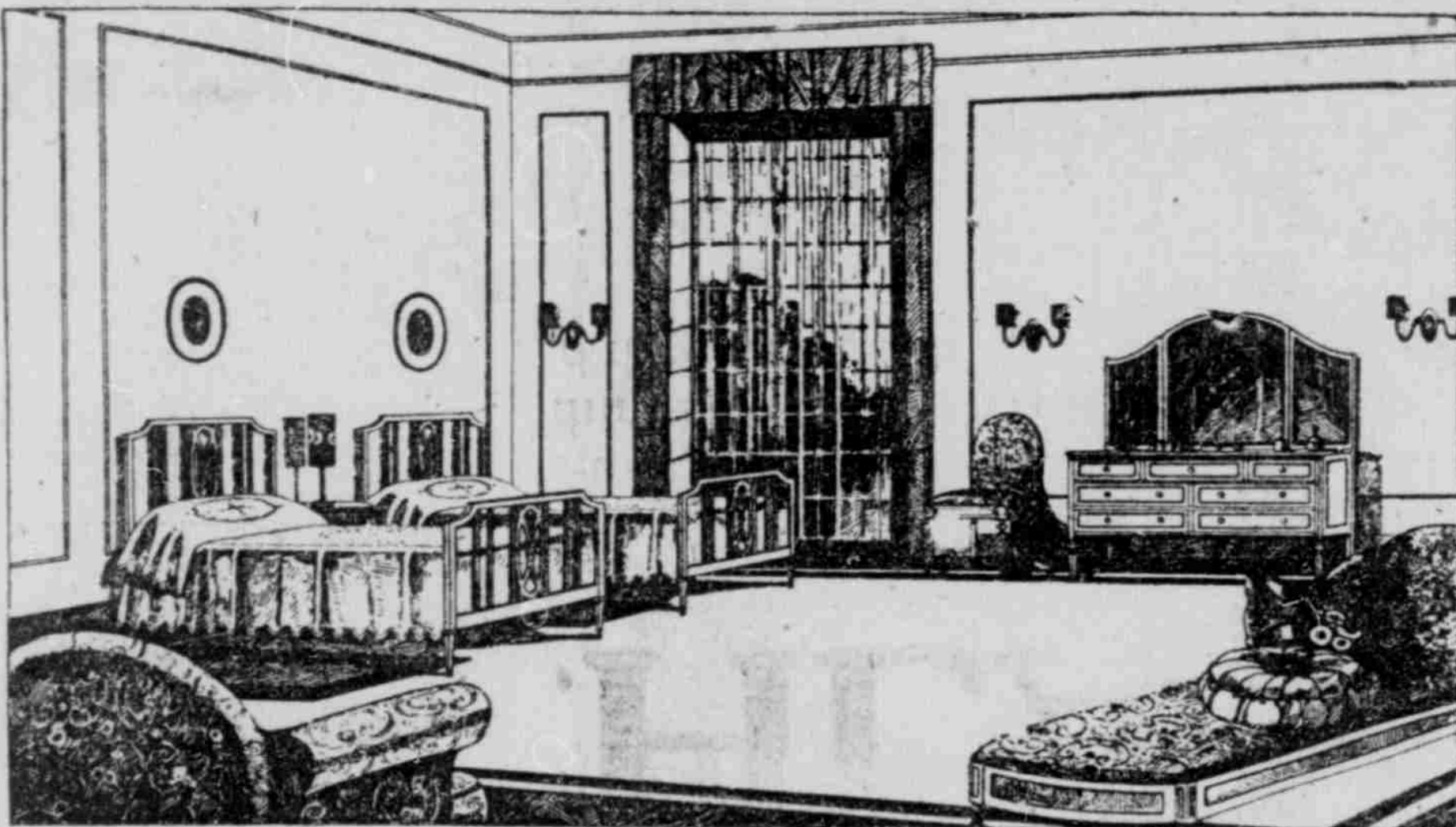
The convention approved Blackstone's measure and agreed to urge congressional action upon it.

Addresses were also delivered before the convention Thursday morning by Victor Wright, Los Angeles, and M. G. Liberman, Memphis, Tenn.

## LOVE FOR HAIRLESS DOG LANDS MAN IN CITY JAIL

DALLAS, Tex., Aug. 22.—His love for a hairless dog from Chihuahua, the home of his birth, got Jazza Morales in jail this week. The dog catcher hooked the Mexican's canine and took him to the city pound. Morales went to the pound and demanded his friend. When he was refused he broke the gates down and attempted to take the dog. He was arrested. Morales' canine went the way of hundreds of others—the gas route.

STRIKE CALLED OFF.  
BALTIMORE, Md., Aug. 22.—The strike of the 4,000 union workers in the shipbuilding corporation yards at Sparrows Point was called off Thursday night and the men will return to work Friday.



## SIMMONS BEDS Built for Sleep

Buy a Simmons Bed and a Simmons Spring and be sure of that deep, restful sleep which makes for renewed vigor, enthusiasm and efficiency.

Any Simmons Bed you select here is designed and built with proper regard for sleep. You will also find that, in refinement of design and elegance of finish, it is in perfect accord with modern style ideas—in harmony with the accepted good taste standard of bedroom decoration.

Greater South Bend's  
Greatest Furniture Outfitters

Ries Furniture Co.  
300-310 S. MICH. ST. SOUTH BEND, IND.

Greater South Bend's  
Greatest Furniture Outfitters

Store Hours: 8:30 A. M. to 5:30 P. M. Saturday 9:30 P. M.

## CHARLES B. SAX & COMPANY

114 South Michigan Street, Near Washington Avenue

## Final Reductions on all Summer Wearing Apparel Accessories and Dry Goods

The Advantages are Apparent in These August Clean Up  
Sale Offerings Listed Below

### Men! Look at These Savings

#### Balbriggan Union Suits

In light summer weight, with short or long sleeves, ankle length. Very special Saturday, suit .....\$1.50

#### Men's Shirts and Drawers

Men's Balbriggan Shirts and Drawers, good quality, broken line of sizes. Saturday special, garment .....45c

#### Men's Wash Ties

Wash Neckwear, white with colored woven stripes. Special Saturday only, choice.....7c

#### Silk Neckwear

Men's Silk Neckwear. Regular 25c and 35c values. Choice Saturday .....17c

Men's Cotton Hose, broken line of colors and sizes. Special, pair .....15c

Men's Khaki Handkerchiefs. Regular 15c value.....10c

Automobile Hats, one small lot of Motor Hats to close out at

#### HALF PRICE

Handkerchiefs, one lot of Women's and Children's Handkerchiefs, special at...5c

### Muslin Underwear

#### PRICES THAT WILL SAVE YOU MONEY

Envelope Chemise, lace and embroidery trimmed, in pink and white. Very special .....\$1.00

Women's Combination Suits, corset covers and drawers, lace trimmed. Very special .....75c

White Batiste and Pink Crepe Batiste Bloomers. Special at .....75c and \$1.00

Corset Covers, trimmed with rows of lace insertion, finished with beading and ribbon. Special .....39c

Muslin Skirts, ruffle with tucks and embroidery edge. Special .....\$1.25

Fine Pink Batiste Gowns, embroidered in colored designs .....\$1.75 and \$2.00

Women's Pink Crepe Pajamas, one-piece, with blue figures .....\$1.98

One-Piece Crepe Pajamas, in white, pink and light blue, elastic waist, ribbon trimmed, at.....\$2.95

Dainty Nainsook Gowns and Envelope Chemise, well made; nicely trimmed. Specially priced from \$1.50 to .....\$3.50

### August Fur Sale

Our Furs were bought months before the advance in prices on fur skins and labor. We are therefore prepared to offer fur garments in correct styles that will be impossible to equal later on this season.

### Advance Sale of Fall and

### Winter Underwear

Supply your needs now and save money. Stephenson's Underwear for Men. Harvard Mills for Women and Children.

### Home Needs

#### Big Reductions in

Water Sets, American Cut Glass, 1/2 gallon pitcher and 6 glasses. Special Saturday at .....\$2.79

One table Dinnerware, broken line. Choice Saturday at .....

#### HALF PRICE

20 Mule Team Borax or Soap Chips. Regular price 15c package. Saturday 3 packages for .....35c

Fancy China Plates and Platters, floral and conventional designs. 35c and 39c values. Choice .....19c

One odd lot of Glassware. Choice .....10c

Earthenware Knife Boxes. 25c at .....19c

Champion Lye, high test. Can .....9c

Gold Dust Washing Powder, box .....29c

Patent Can Openers. 25c value at .....19c

Silvered Picture Wire, 3 boxes .....10c

Thin blown Water Glasses, neatly decorated; regular \$1 value. Very Special 6 for 69c

## Your Opportunity in Greater South Bend Today

Population 1919  
78,144

# RICHLAND

The New Residential Center

In the Path of South Bend's Industrial and Residential Expansion

Population 1920  
100,000

### FACTS YOU SHOULD KNOW

The Industrial expansion of Greater South Bend will mean an increase in population of 50,000 within the next two years. In the next five months alone, over 8,000 workers of various trades and their families will be brought to this city. Only recently a new \$10,000,000 rubber corporation was formed and it is their intention to erect a large plant at once. This will attract thousands of others. Many small factories and manufacturers are contemplating moving their business here in the very near future. Taking all this into consideration, to state that there will be an increase in population of 50,000 is not an exaggeration.

Right now, there is a shortage of over 2,000 houses in the city. Adequate housing facilities must be provided to take care of this increase in population. Home sites should be provided and homes must be built, in a locality convenient to the industrial district. To provide this, the city can only expand one way. A glance at any city map will prove this statement. To that end and because we fully believe that this city will double its population, we are opening RICHLAND to the public, which combines not only all the necessary requisites which go to make an ideal residential community, but in addition is one of the finest investment propositions ever offered to the clear visioned, far sighted buyers of realty.

Ten houses are now in the course of construction in RICHLAND; 475 more are to be built within the coming two years. This will be built to suit the purchaser on easy payments, at any time on the lots you purchase in RICHLAND.

### RICHLAND OFFERS

Good, dry level lots; best garden land in city; pure air, yet within easy walking distance to all factories, churches, schools, transportation and neighborhood facilities. Fifteen minutes to heart of city.

### FACTORIES ADJOINING RICHLAND

Studebaker Plants,  
Oliver Plants,  
Wilson Shirt Co.,  
Singer Mfg. Co.,  
Sanders & Egbert Co.,  
and many others now building  
or contemplated.

Adjoining the New Manufacturing and Factory District. The Greatest Investment Proposition Ever Offered.

LOTS 40x128. LOTS 48x128. LOTS 63x128. LOTS 120x128. Prices from \$245.00 up. Terms 10 per cent down; 2 per cent a month. Reservations now being made. For further information call Main 1426.

## SHELLINGER HOME BUILDING COMPANY

201-202 J. M. S. Bldg., Main and Washington Av., South Bend, Ind.

FRANK J. MURRAY, Sales Manager,