

CAMBRIDGE ELECTRIC SERVICE VALUATION NOT YET REPORTED

(Special to the Palladium)

CAMBRIDGE CITY, Ind., Nov. 2.—A valuation for the electric service branch of the local municipal electric and water works plant has not yet been established by the appraisers appointed by the Wayne circuit court, but it is understood that the appraisers' report will be submitted to the town clerk within the next week or 10 days.

A tentative proposal for the purchase of the electric service utility was made several weeks ago by the Interstate company, which operates a plant at Connersville. The majority of the members of the town board appear to favor the sale of the electric plant but no sale advertising will be authorized until the valuation has been established.

Will Advertise Bids
Should the board members regard the valuation sufficiently attractive to bidders they will, undoubtedly, proceed to advertise for bids for 30 days, as required, in which event citizens who are opposed to the sale of the property threaten to circulate a petition asking for a referendum election to determine what disposition shall be made of the plant.

An additional well for the local water works plant has been sunk and it is now in service. The new well is connected with the old well by valves so that the water supply can be drawn from one or both, as conditions demand. The town is now assured ample water supply for fire protection and for commercial purposes.

The Rev. C. R. McCormick, of Milton, who has occupied pulpits in western Wayne county for many years, and who has retired from the ministry of the Centerville Christian church to accept the pastorate of the Cambridge City Christian church beginning next Sunday, has been presented with an automobile by the congregation of the Centerville church.

Signal men on the Pennsylvania railroad between Columbus and Indianapolis, and members of their families, will hold an all-day meeting at Dublin next Sunday. The Dublin T. O. F. hall has been rented for the occasion.

The Rev. M. Mohler, of Brookville, Ind., has accepted the pastorate of the Lutheran church at Pershing and will immediately move his family to that town.

Although not completed, the new school at Pershing has been opened with a capacity attendance. The building is well heated and ventilated and is one of the best rural schools in the county. Miss Ethel Stant, of Dublin, is in charge of the primary room and Mr. Swails, of Centerville, is in charge of the intermediary department.

The following is the program for the Jackson township Sunday school institute to be held next Sunday at the Dublin M. E. church: Song by the audience; devotion; Rev. Reese; special music by the Dublin M. E. Sunday school members; roll call; secretary-treasurer's report; reports of superintendents; address by E. T. Albertson, superintendent of the state Sunday school association; benediction.

A three weeks' evangelistic campaign will be conducted at the Cambridge City M. E. church, to begin Wednesday of next week. The campaign will be conducted by the Rev. Earl Nafziger, a well known evangelist, and several assistants, including Mrs. Nafziger, who is said to be an accomplished musician, both instrumental and vocal.

The public is invited to attend all of the evangelistic services, which will be held daily during the campaign.

EATON EXPOSITION ATTRACTS INTEREST

EATON, Ohio, Nov. 2.—Eaton merchants' "Trade Exposition," which opened Tuesday evening with a Halloween demonstration of considerable magnitude, will continue until Saturday night. Special entertainment features have been arranged for the week. Stores and streets in the business section are in Halloween garb for the week. Various features carrying prize offers are attracting much attention.

A masquerade party and open air dance in the downtown section featured the Halloween demonstration Tuesday evening. A list of prizes ranging from \$10 to \$1 was awarded on various costumes of the maskers. The judges announced the following winners:

Best couple, Maude Coffman, Lewisburg, and Clarence Renner, New Hope; second best couple, Daisy Ulrich and Norma Young, both of West Alexandria; best comic couple, John Henne, Lewisburg, and Cyrus Kircotte, Gratiot; second best, Mr. and Mrs. Ernest Matthews, Lewisburg; best single, Lura Saylor, West Alexandria; second, Mrs. Ray Helton, Camden; best comic, Earl Buckley, Lewisburg; best dressed child, Billie Daffler, Eaton; second, Betty Fleming, Eaton.

Mrs. Carrie Sherer, of New Paris, was elected president of the Rebekah lodges of the forty-sixth district in the annual meeting of the lodges Tuesday in New Paris. Mrs. Ada Hipple, of Eaton, was elected vice-president; Mrs. Tensie Albert, Lewisburg, secretary; Mrs. Ida Gilmore, Lewisburg, treasurer. Eaton was selected as the place for holding the 1923 meeting. Rebekah lodges of Preble county form a part of the forty-sixth district.

Elder O. D. Werking, of Indiana, will inaugurate a season of religious services Sunday in Price Creek church. An all-day and evening meeting will be held in the church Saturday. Communion service will be observed in the evening.

Cold in the Head?
Get a jar of Jack Frost Cream, apply liberally in nostrils. Head will quickly disappear. Cools, soothes, heals. All druggists.

JACK FROST

FAMOUS AIRPLANE INVENTOR.



Anthony G. H. Fokker, inventor of many of the airplane types used by Germany during the war, has perfected a new glider, which he tried out recently in England. He remained in the air fifteen minutes.

Monroe School

Chapel service next Monday morning, with Rev. Thomas M. Murray in charge. Everybody invited. . . Charles Schlotterbeck was absent from school last Monday on account of illness. . . School was dismissed last Friday, when all the teachers spent the time attending the Southwestern Ohio Teachers' association meeting at Cincinnati, Ohio. . . Charles McCoy, of Richmond, last Monday. . . Miss Velma Kessler entertained the sophomore class with a Halloween party at her home last Friday evening. . . The freshman class organized last Monday. Officers were elected as follows: President, Vernie Wilt; vice-president, Helen Kimmel; secretary-treasurer, Reva Coning. . . Woodrow and Benton Coning and Herman Parks were absent from school two days last week. . . Lois Richards, Fern House, Loece Marshall, Elsie Parks, John and Grace

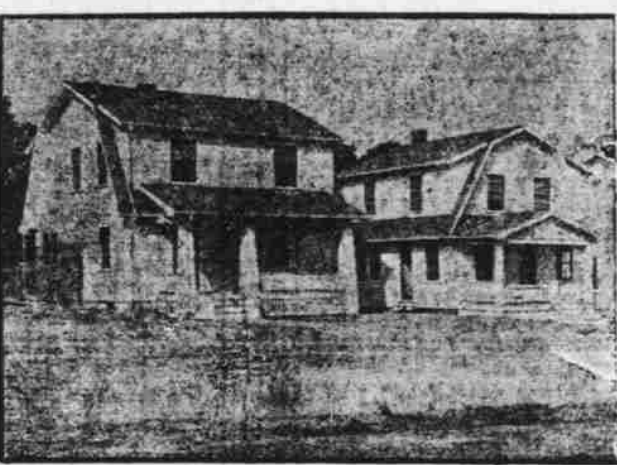
Blackford, Leonard Minnich, Catherine and Lowell Penland and Fay Rule, all Monroe graduates and now attending Miami university, spent Friday, Saturday and Sunday with their parents. . . Joe Colvin, of O. S. U., one of Monroe's graduates spent Saturday and Sunday with his mother in Eldorado. . . Superintendent Moses, principal Grasshoff, Miss Brube, Miss Katzenberger, Alden Gruber and Rev. Murray saw the Miami-Denison game at

STOP RHEUMATISM WITH RED PEPPER

When you are suffering with rheumatism so you can hardly get around just try Red Pepper Rub and you will have the quickest relief known. Nothing has such concentrated, penetrating heat as red peppers. Instant relief. Just as soon as you apply Red Pepper Rub you feel the tingling heat. In three minutes it warms the sore spot through and through. Frees the blood circulation, breaks up the congestion—and the old rheumatism torture is gone. Rowles Red Pepper Rub, made from red peppers, costs little at any drug store. Get a jar at once. Use it for lumbago, neuritis, backache, stiff neck, sore muscles, colds in chest. Almost instant relief awaits you. Be sure to get the genuine, with the name Rowles on each package.—Advertisement.

No More Dandruff

A few rubbings with Parisian Sage will clean your scalp of every particle of dangerous dandruff. Get rid of dandruff and your scalp will stop itching and the hair cease to fall out. Parisian Sage is always guaranteed and sold by A. G. Luken Drug Co., and druggists everywhere.—Advertisement.



It's Ours!

The Proudest Day of Your Life Will be the Day You Buy Your Own Home!

It is the ambition of every broad-minded family head to some day own a home for his family. The uncertainty of renting makes it impossible for the renter to furnish and equip his home with the little details that make it complete. Renting also is a source of expense—it never pays any return. On the other hand, money put into property on the payment plan represents an investment from the very first.

Now Is the Time to Buy

There is no need for the family head in Richmond or vicinity to be living in a rented property. We are offering at this time a wonderful opportunity to every one to own their own homes. Matters like home buying, when put off from time to time in favor of other investments and pleasures, generally result in the party renting the rest of their lifetime.

Homes for People Who Care

In building the beautiful Wrightland homes, we designed and built each home with the same care and individuality that we would build in one home for our own use. We invite any one to inspect our homes personally, from the basement to the upstairs. No one will be urged to buy, and we will consider it a great favor if you will come and look.

TO PROSPECTIVE BUYERS

Prospective home buyers will please get in touch with our salesmen on the grounds and have them explain the easy method by which you may own a Wrightland home. Our representative will be on the grounds from 7 a. m. to 3 p. m. each day.

W. S. WHITE, Salesman
Phone 3524

EDWIN C. WRIGHT, Owner
Office on Peacock Road

Dayton Saturday. . . . John Blackford called on Superintendent Moses Sunday afternoon. . . . Monroe defeated Dixon on the local diamond Thursday, score 8 to 1. The game was a rather tame affair. . . . West Elton comes to Monroe for a baseball game next Friday afternoon. This promises to be a good game.

The juniors and seniors are planning a masquerade party in the gymnasium next Friday evening. . . . No agents or solicitors will be permitted to visit the teachers in school without permission from the office. This ruling applies to all classes of salesmen and calls during school hours. . . . School board members, teachers and pupils extend to Miss Raney, who taught the first grade last year, their sincere sympathy in this hour of grief. Miss Raney's father died last Sunday. . . . Norma Van Felt leaves the sophomore class next Tuesday when her parents move to Gordon. She will enter Verona high school and the best wishes of her classmates and teachers go with her. . . . Mr. Drummond, United States internal revenue collector, was here last Thursday from Camden, Ohio, and collected \$16.67 from each of the motor driven buses owned by private individuals. It seems that Monroe's drivers investigated the matter and escaped the penalties which others had paid. . . . Esther Nichols was elected to represent Monroe at St. Claire day in Eaton next Monday. Her essay is entitled "The Battle of Forty Foot Pitch." The high school quartet, composed of Dorothy Schiml, Paul Emrick, Bennett Owen and Eileen Smith will represent Monroe on the evening program.

In the last ten years more than 1400 inventions to prevent train wrecks have been given trial, without satisfactory results.

COULD HARDLY STAND AT TIMES

Hips, Back and Legs Would Have That Tired Ache

Everett, Washington.—"For several years I have had trouble with the lowest part of my back and my hips and my legs would ache with that tired ache. I could hardly stand on my feet at times. I was always able to do my work although I did not feel good. I saw Lydia E. Pinkham's Vegetable Compound advertised and having heard several praise it I decided to try it. I feel first-rate at the present time. It has done wonders for me and I keep it in the house right along. I always recommend it to others who are sick and ailing."—Mrs. J. M. Sinsbury, 4032 High St., Everett, Washington.

To do any kind of work, or to play for that matter, is next to impossible if you are suffering from some form of female trouble. It may cause your back or your legs to ache, it may make you nervous and irritable. You may be able to keep up and around, but you do not feel good. Lydia E. Pinkham's Vegetable Compound is a medicine for women. It is especially adapted to relieve the cause of the trouble and then these annoying pains, aches and "no good" feelings disappear. It has done this for many, many women; why not give it a fair trial—now.—Advertisement.

OIL VS. COAL IN STEAM MAKING

Oil is more economical than coal as a fuel for producing steam, according to experiments conducted at Yale University. Though oil costs more per pound, it was shown that over thirteen pounds of water can be evaporated per pound of oil, as compared to eight pounds of water turned to steam by a pound of coal. Under this test the cost of the oil ran about fifty-two cents per thousand pounds of steam, as against fifty-five cents for coal. It would seem that oil is more efficient than coal because it can be readily turned on or off, thus giving quick change in rate of boiler heating. Oil also burns better.—Pathfinder.

To-NIGHT Tomorrow Alright

BILIOUSNESS—SICK HEADACHE, call for an NR Tablet, (a vegetable aperient) to tone and strengthen the organs of digestion and eliminate. Improves Appetite, Relieves Constipation.

Get a 25¢ Box Your Druggist

Used for over 50 years

Chips off the Old Block

NR JUNIORS—Little NRs One-third the regular dose. Made of same ingredients, then candy coated. For children and adults.

Tracy's Week End Specials

2400 Cans New Stock Sliced
PINEAPPLES in Heavy Syrup 35c Large Cans
3 Cans for \$1
A Real Buy—Limit 6 Cans

MATCHES Red Bird 6 for 29c
P. & G. White Naptha 10 for 45c
Kirk's Flake, 10 for 45c

SUGAR Pure Cane, Cloth B 25 lbs., \$1.87
24lbs. Flour Carpenter's .78c Pillsbury .90c Enterprise .91c

Good Luck Milk tall .9c
Creamery Butter, lb. .47c
Good Luck Oleo pound .25c

BREAD 1 1/2 Pounds Home Made .9c

1032 Main **TRACY'S** 526 Main
TEA AND COFFEE HOUSE

Whelan's

Timely Tips

Published Weekly

By Omer G. Whelan "The Feed Man"

31-33 S. 6th Phone 1679

VOL. II. Registered RICHMOND, INDIANA, NOVEMBER 2, 1922 No. 29

Dairymen Finds Purdue Ration Pays Big

One example of the hundreds of good things coming to Indiana dairymen through their co-operation with Purdue university dairymen was shown recently in a visit to members of the Ripley County Cow Testing association by G. A. Williams, a dairy extension worker from Purdue and the county agent, V. T. Oxer. One member of the association had been feeding bran and shorts to his dairy herd, along with the pasture and ensilage. He had been induced previously to change this to the Purdue grain mixture, 4-2-1, four parts ground corn, 2 parts of ground oats or bran and one part linseed oil meal. His feed cost had been reduced by the change from \$10 per month to \$5.50 and the flow of milk had been increased materially. Other members who had changed their methods of feeding reported similar results.

Union County Folks Taught Egg Grading

In Union county, the grading of eggs was taken up at each place where culling demonstrations were held by the county agent or extension workers from Purdue university and some eggs were shipped to eastern markets. These netted the shippers nine and ten cents a dozen over the local market, which pays exceptionally well for shipping there—around \$3 per crate. The main difficulty is that many farmers are not able to get a crate of eggs quickly enough, even if two of them go together. However, for those who are able to do so, this makes a nice profit which they would not otherwise get.

Daily Live Stock Markets

CALL WHELAN

The Culture of Tulips

It is difficult to conceive anything more brilliant in color than a bed of good Tulips. Their great variety of color, intense brilliancy and beautiful shadings make them universal favorites. The ease with which they can be grown and the low price at which they are offered are added points in their favor and the cause of the many plantings of Tulips seen throughout the country.

Tulips do well in any good garden soil and may be planted any time during the autumn before the ground is closed by frost. The bulbs should be placed from five to six inches apart and from three to five inches deep, varying with the soil. They are perfectly hardy and require no covering during the winter, but a light covering of leaves or manure will keep the frost from throwing them out of place. A dry, sunny position is the best. While Tulips are usually planted

in beds, yet they can be used to great advantage in many places. They make an effective border for beds of shrubbery or perennials.

Tulips may be planted singly in four-inch pots, five or six in six-inch pots or in double or triple rows in window boxes. They need practically no care after planting other than to be set in a cool, dark cellar and watered occasionally. When an inch or two above the ground they may be brought to the light of a cool window. Plenty of time and little heat mean success, while haste and too much heat spell disaster in forcing Tulips.

BULBS

Another big shipment just received of bulbs direct from Holland. They are high class, first size and unusually good value in every way.

For Planting Now
Hyacinths, Narcissus, Tulips, Crocus, Poinsettias, Paper Whites
Will Bloom in 6 to 8 Weeks
OMER G. WHELAN
The Feed Man

STORAGE

We have a dry, well ventilated warehouse equipped with a Ginnell Sprinkling System where we can store several automobiles this winter. Rates are very reasonable and insurance rates are low.

WHELAN'S

PULLETS WILL SOON BEGIN LAYING

Cold damp days prevent their securing the necessary feeds on range. See that they get the proper combination of feeds. You will find it in—

Whelan's EGG MASH

\$2.85 cwt., \$1.50 for 50 lbs., 85c for 25 lbs., 3/4c per lb.

DEMAND POLAR BEAR FLOUR

Costs more than some flours. Worth all it costs.

Ask Your Grocer

OMER G. WHELAN
Distributor
Richmond, Indiana

