

## Lincoln Memorial Dedication

By FREDERIC J. HASKIN

WASHINGTON, D. C., May 28. — The 30th of May this year will be marked by a ceremony of interest to the whole nation, and one unique in the history of the United States. When the Lincoln Memorial here is dedicated on that date the President of the United States, two former presidents, and the sons of still two other former Presidents, will be present. President Harding, William Howard Taft and Woodrow Wilson, will take part in the ceremonies. There will also be present Robert Lincoln, son of the great Lincoln, and Assistant Secretary of the Navy Theodore Roosevelt, son of the illustrious man of the same name who occupied the White House for almost two terms.

Beyond all questions, the Lincoln Memorial is the most beautiful work in marble ever undertaken on this side of the world. It will take rank with the Library of Congress, the Washington Monument, the White House, and the Capitol as a point of interest for visitors to Washington in the future.

Immediately upon entering the main portal the heroic statue of Lincoln is seen. The figure is seated but because of its enormous proportions it is 22 feet high. It is the work of Daniel Chester French, noted American sculptor. Had Mr. French elected to portray Lincoln standing, the figure would have towered 38 feet in the air.

The marble for the statue was brought from Georgia, and in the rough weighed no less than 427 tons. Twenty-eight great blocks of this fine grade of stone were used, and in the completed statue weight 175 tons. The sections of the statue were cut in the marble in the yards of the six Piccirilli brothers in New York City. A score of marble cutters were kept busy for 18 months completing the work, which was then transported to Washington in sections.

The model made by Mr. French was only five feet high. From this perfected piece of sculpture, the marble cutting art made possible the enormously enlarged marble replica.

Some Remarkable Paintings

The great seated figure is, of course, the main point of interest in the Memorial. Next to it rank the paintings by Jules Guerlin, of St. Louis, one of America's foremost painters. Mr. Guerlin for some years past has made his home in New York, and the paintings for the memorial were done in his studio there.

In keeping with the heroic proportions of the Lincoln statue, it is interesting to note that the canvas alone for each of the paintings, which are 60 feet long and 12 feet high, weighed

300 pounds when work on them was commenced. They are hung 30 feet above the floor of the Memorial. The finishing of these paintings required twice as long as the business of cutting the marble blocks into a finished statue. For three long years Guerlin worked in his New York studio before the result was satisfactory to him. The titles of the two pictures are "Emancipation" and "Reunion." Four human figures appear in the paintings, which from a mechanical standpoint are made to endure for centuries without cracking or having the paint crumble. Mr. Guerlin mixed his pigments with kerosene and white wax in order to guard against deterioration.

There are but two other main decorative features of the Memorial. The first is the famous Gettysburg address of Lincoln, the other his second inaugural address. Both of these are carved on tablets of the same sort of marble that is used in the statue and its base.

Henry Bacon was the architect of the Lincoln Memorial. He, too, although a native of Illinois, now makes his home in New York. The first work on the Memorial and the general design of the whole was left to his capable hands.

The Memorial cost all told \$3,000,000. Of this amount the architect received \$125,000, the sculptor \$85,000, and the artist \$45,000. The remainder of the sum was spent in actual construction of the edifice, the approaches to it, and the reflecting pool to the east of the building.

The Memorial is located on the axis of the Capitol and the Washington Monument, in accordance with the early plans for making and keeping the Capitol a place of beauty. A stone's throw to the west of the building is the Potomac River.

The business of erecting this newest shrine of beauty in Washington has been going forward constantly since February 12, 1914, when Mr.

Taft, then president of the Lincoln Memorial Commission, turned the first spadeful of earth on the site. The very foundation of the Memorial is of interest from a scientific point of view. Instead of the ordinary excavation, 122 steel cylinders were driven down through the earth until each one reached and rested on bedrock. These cylinders were driven down by blocks of concrete weighing 30 tons, much as wooden piles are driven into the ground. The cylinders then were filled with concrete. A year was occupied with this part of the work. This time was sufficient to complete not only the underground part of the foundation, but 45 feet of it which rises above the surrounding ground level. For this Colorado-Yale marble obtained 8,000 feet above sea level was used. By filling in with earth, the group was brought up to the top of the foundation level, placing the structure at the top of a gently sloping artificial hill.

The roof of the Memorial is an interesting departure in such construction. It is of marble cut in slabs five feet long, three feet wide, and only three-eighths of an inch thick. Through this the sunlight easily enters, softens and diffuses. This was an experiment, but proved to be a highly successful one.

The 36 marble pillars surrounding

the building on the outside are symbols of the states of the Union at the time of Lincoln's death. Above this colonnade, at regular intervals, are 48 memorial festoons, representing the states of the Union today. The columns around the outside of the building are 44 feet high, and seven feet in diameter. The columns inside are 50 feet high, and five and a half feet in thickness.

The Lincoln Memorial is already popular as one of the Capital's outstanding beauty spots. On sunny afternoons the roads which offer changing views of it are thronged with sight-seers. From the city it appears

as a great Greek temple with the Potomac, the Virginia hills, and glimpses of Arlington as a classic backdrop to the nearby Monument to pilgrims.

This tribute to the Great Washington, and in future the two Emancipator is a fitting companion will share in the homage of patriotic

**Nature's Remedy**  
R-TABLETS-NR  
Better than Pills GET A  
For Liver Ills. 25c Box  
Sold by A. G. Luken Drug Company.

**"If It's a Gravel Product,  
We Can Produce It"**  
We deliver by truck in any  
quantity.  
Plant No. 2  
**The Richmond-Greenville  
Gravel Company**  
Phones 4132-4032

**BRONCHITIS**  
At bedtime rub the throat and  
chest thoroughly with—  
**VICKS**  
VAPORUB  
Over 17 Million Jars Used Yearly



## Steam Shovel vs. Tires

On South 7th St. a big steam shovel has been digging the way for a perfectly good street.

We are also digging the way for a volume of tire and tube business, and when it comes to results a steam shovel has nothing on us. Just drop in here and we'll show you why business is good—because we offer the best values for the least money, not merely price, but standard, reliable merchandise at underselling prices. Your confidence we seek to gain and hold.

**\$10.00 Buys** our very best 30x3 1/2 6,000-mile tire and tube, fully guaranteed 6,000 miles. \$10 for both.

**\$14.75 Buys** our massive 30x3 1/2 10,000-mile Cord tire with 31x4 tube, fully guaranteed 10,000 mi. \$14.75 for both

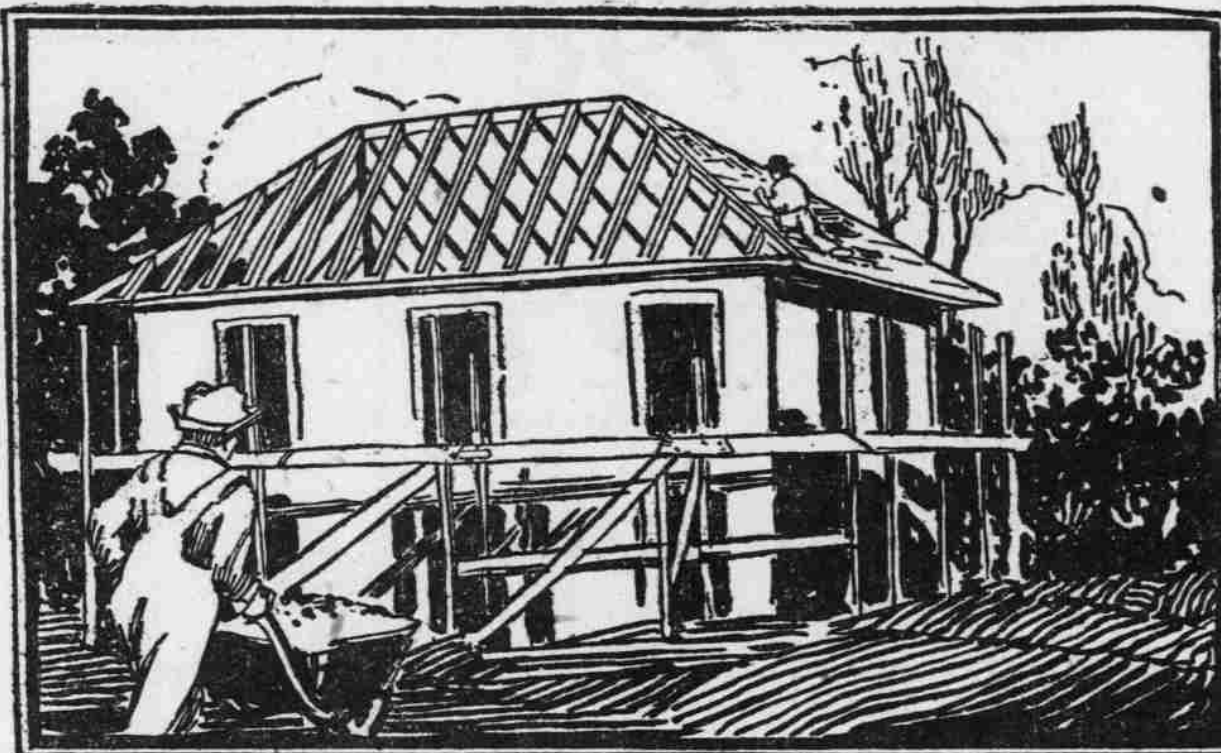
Each Tire and Tube listed here represents strictly a "first" and guaranteed to deliver standard service.

Size—	Kokomo Fabric	Vacuum Tread	Kokomo Cords	Kokomo Tubes
30x3	\$ 7.75	See bottom of ad		\$1.60
30x3 1/2	8.75	for our wonderful 30x3 1/2 offer.		1.90
32x3 1/2	....	12.95	19.90	2.20
31x4	13.40	14.45	23.40	2.50
32x4	16.30	17.30	25.90	2.60
33x4	16.95	17.95	26.60	2.70
34x4	17.45	18.45	27.40	2.80

We could sell you a tire at a cheaper price, but we would have to sell you a cheaper tire. We offer the very best for the least. Fix that firmly in your mind.

First Door South of Irvin Reed Hardware Store

**LEE "The Tire Man"**  
8 South 7th St., Richmond



## The answer to the Problem MORE HOMES!

THERE is only one solution to the housing problem, and that is to build more houses. For several years building operations have been falling far behind the increase in population, due to war time restrictions, shortage of material and labor, inflated building costs and general unsettled conditions.

**TODAY** there are 121 families to every 100 homes. A shortage of five million homes in the United States. Two families living in every fourth house.

This situation is constantly growing worse and can be remedied only by the building of more homes. The law of supply and demand regulates rents, and rents will be high just as long as the housing shortage continues.

THERE is no longer any excuse for there being five million homeless families in the United States. These people can build homes of their own with the same money they now pay out as rent. Every cent thus invested is as good as money in the bank, earns a better rate of interest and is secured by the best collateral on earth—a part of the earth itself.

THE wartime restrictions have been removed. Labor conditions are constantly improving. Material is nearly twice as cheap as it was a year ago. Plenty of money is available for building purposes at reasonable rates. There will never be a better time than right now to solve the housing problem in the only satisfactory manner. There is just one thing to do and that is to

## BUILD NOW

**Miller-Kemper Co.**  
Phone 3247-3347

**Richmond-Greenville Gravel Co.**  
Phone 4132-4032

**Richmond Lumber Co.**  
Phone 3209-3307

**Bertsch Bros.**  
Drain Tile and Building Blocks. Phone 3250

**Harry E. Pinnick**  
Contractor and Builder. Phone 2132

**Richmond Gravel Co.**  
Phone 4751

**Hackman-Klehfoth Co.**  
Builders' Supplies

**Mather Bros.**  
Lumber and Builders' Supplies

**Klehfoth & Niewoehner Co.**  
Builders' Supplies

**Luken Drug Co.**  
Paints and Supplies

**Old Reliable Paint Co.**  
10-12 S. 7th St. H. C. Shaw, Mgr.

CONDITIONS ARE FAVORABLE

COPYRIGHTED 1921, ARTHUR R. KLING CO.

Another Charming Model at \$3.60

**Newark Shoes for WOMEN**

ASK FOR No. 279

A Beautiful Mahogany Russia Calf Walking Oxford. \$3.60

All the fine leather quality and smart style that you could wish for in footwear at \$5.00 is embodied in NEWARK Shoes at \$3.60. Over FOUR MILLION people in the U. S. A. wear no other! There's a reason! Try a pair!

**Newark Shoe Stores Co.**

The Largest Chain of Shoe Stores in the United States.

**RICHMOND STORE**  
705 Main Street Colonial Building

**Memorial Day**

is the one when the whole nation decorates the graves of our soldiers and other loved ones with flowers.

Surely you propose to honor the memory of your departed ones on Memorial Day.

**Special Cemetery Bunches \$1.50**

Carnations, Roses, Callas, Peonies, Calendulas, etc., All at Moderate Prices.

We Telegraph Flowers to All Points in the United States and Canada

**Lemon's Flower Shop**  
1015 Main St. Phone 1093