

ADVERTISE PRODUCTS, PITTINGER'S ADVICE TO WAYNE FARMERS

About 150 Wayne township farmers and farm women, with their children, attended the township farmer's association meeting in the high school building Thursday night, hearing an address by L. A. Pittinger of Delaware county and sharing in a liberal supper after the program.

The meeting was held in the high school auditorium. R. B. Morrow, chairman of the association, acting as chairman. Miss Mildred Haas, daughter of one of the members, played a piano solo at the opening of the meeting, after which Mr. Morrow introduced the speaker.

A plea for stronger farm organizations in order that agriculture may be made profitable, coupled with a demand that farmers pay more attention to civic and economic matters in their communities and in the nation, was the theme of Mr. Pittinger's address.

"So long as a country has a prosperous and contented agriculture," he said, "and the city workmen own their own homes and are comfortable, the nation is safe; but when fortunes concentrate in the hands of a few, while the people with no homes, are crowded into tenements, or farm owners become tenants, then soon decay begins and the nation is in danger. That condition is near in this," he concluded.

Urging Advertising. Pointing Out Possibilities of farm organizations in advancing farm interests, the speaker urged advertising of the agricultural business and products.

"Cigarettes are advertised on every billboard, and we see everywhere, accounts of the qualities of oleomargarine. Yet nowhere do we find farmers urging upon the public the advantages of pure cream, or fresh laid eggs or country butter instead of oleomargarine. We must let city people know about our business and keep them informed."

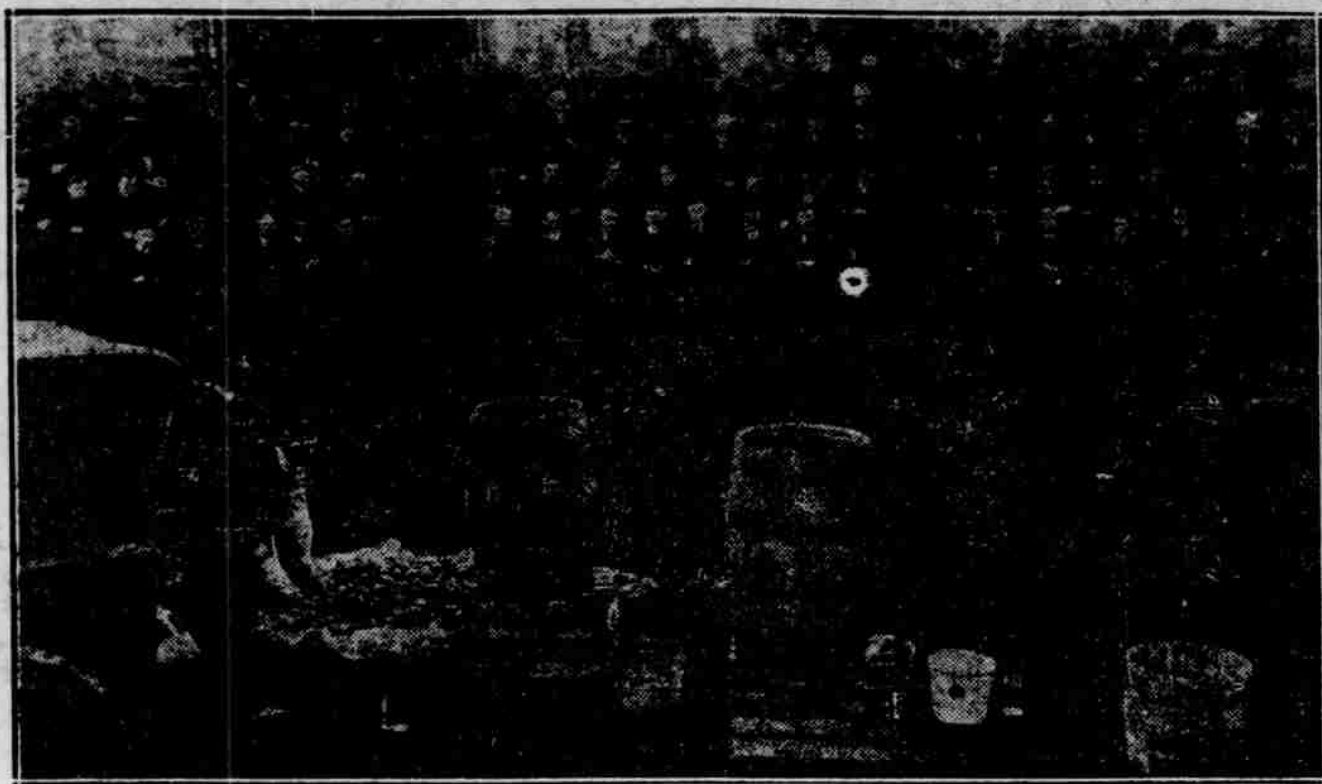
Blaming farmers for falling in their duties as citizens and for allowing tax money to be wasted, Mr. Pittinger said, "We save and scrape and work to get every dollar or to keep what few we have, and then we often go to the polls and vote into office to spend our money, a man who cannot even manage his own business. Our taxes in 1915 were \$11 per capita, but now they are \$226 per capita. It is time for us to look after our public business."

Following the speech, Miss Pauline McPherson sang a solo, accompanied by Miss Mildred Haas. In response to an enthusiastic and insistent demand for an encore, she returned to sing "Rosalee."

After the program, the audience filed into the school kitchen, where a generous meal was served by the ladies of the Neighborhood club.

The occasion was partly in celebration of the close of the membership campaign and its results of a paid-up membership equal to the total of last year, and also offered an opportunity for new members to get acquainted. The association now numbers 127, it was announced, with many more

Will Demonstrate Treating of Seed Potatoes at Purdue Short Course, Jan. 9 to 13



Farmers at short course at Purdue university watching demonstration of treating seed potatoes to prevent diseases.

Treating of seed potatoes with a solution of corrosive sublimate is the only sure way to get a potato crop that is free from scab, scurf and other diseases, and produce the kind of potatoes that really will keep through the winter without any trouble. How to treat the seed will be demonstrated at the annual farmers' short course at Purdue university, Jan. 9 to 13. This is one of the many interesting demonstrations to be held during the week, the remainder com-

ing in various lines of work, including corn and livestock judging, orchard and poultry work and in home economics work.

The treating of seed potatoes now is being practiced by all of the successful commercial potato growers. They are finding the practice decidedly worth while and profitable and it is being taken up rapidly by the farmer and the man who grows his potatoes in the back yard or vacant lot gardens. The methods are simple

and easy to grasp, especially with a demonstration.

A large number of vegetable growers from over the state will be here for the short course and most of them will remain for this and other demonstrations of interest to orchard men and vegetable producers.

The state corn and potato shows and the club products show will be held next week in connection with the course, and prospects now are for the biggest shows in the history of the short courses.

POULTRYMEN INVITE FARMERS TO EXHIBIT

AURORA, Ind., Jan. 6.—Farmers and poultrymen of Wayne county have been sent an invitation from the Dearborn county poultry association, to exhibit in their first annual poultry show to be held in Aurora on Feb. 2, 3, 4 and 5.

Liberal cash premiums have been offered on all varieties and breeds in both the fancier's and utility classes. In addition to 20 silver cups as special premiums.

The association will also hold a farmers' banquet in connection with the show on Feb. 3 at 6:30; reservations for which may be made at 75 cents a plate from the secretary, Edward W. Meyer, of Lawrenceburg, before the closing date, Jan. 25. Entries of exhibits also should be made through him before that date. Prof. G. I. Christie of Purdue will address the farmers at the banquet.

CINCINNATI BUILDING

CINCINNATI, O., Jan. 6.—Building permits totaling 16,595, and calling for improvements amounting to \$17,682,310, were issued here in 1921.

POULTRYMEN INVITE FARMERS TO EXHIBIT

AURORA, Ind., Jan. 6.—Farmers and poultrymen of Wayne county have been sent an invitation from the Dearborn county poultry association, to exhibit in their first annual poultry show to be held in Aurora on Feb. 2, 3, 4 and 5.

Liberal cash premiums have been offered on all varieties and breeds in both the fancier's and utility classes. In addition to 20 silver cups as special premiums.

The association will also hold a farmers' banquet in connection with the show on Feb. 3 at 6:30; reservations for which may be made at 75 cents a plate from the secretary, Edward W. Meyer, of Lawrenceburg, before the closing date, Jan. 25. Entries of exhibits also should be made through him before that date. Prof. G. I. Christie of Purdue will address the farmers at the banquet.

CINCINNATI BUILDING

CINCINNATI, O., Jan. 6.—Building permits totaling 16,595, and calling for improvements amounting to \$17,682,310, were issued here in 1921.

Dalton Township Farmers To Have Oyster Supper

DALTON, Ind., Jan. 6.—An oyster supper will be given at the community meeting to be held in Dalton township Tuesday night, Jan. 10. Prof. L. A. Pittinger has agreed to be present and address the meeting, and a large attendance is expected, farmers in all parts of the township having announced their intention of coming.

No Old Women Nowadays

Modern dress, hair dressers, facial experts and cosmetics all combine to keep women of all ages young and attractive in appearance. Not until the telltale wrinkles become so deep, the figure stoops, or some ailment or weakness develops to drag a woman down does she really look her age.

Every woman owes it to herself and her family to keep herself young in appearance and happy. When headaches, backache or "the blues" develop, or when a woman reaches the trying age, from forty-five to fifty, Lydia E. Pinkham's Vegetable Compound may be depended upon to keep her in health as it has so many other women whose letters we are continually publishing in this paper.—Advertisement.

ACREAGE OF WHEAT IN WAYNE, RANDOLPH, FAYETTE, DECREASES

INDIANAPOLIS, Ind., Jan. 6.—A slight decrease in wheat acreage, an increase in the acreage of rye, with both crops in Indiana in a better condition than in the rest of the country, and farm wages lower than last year but still 50 percent above pre-war figures, are shown in the last Indiana crop report.

The acreage of land sowed to wheat this fall in Wayne, Fayette, and Randolph counties has fallen off four percent from last year's figures, the wheat land this year amounting to 96 percent of last year. In Henry and Union counties acreages sown were equal to the acreages last year.

On the other hand, rye acreages show a marked increase, in most counties of the state, being equal to last year in Randolph and Henry, with an increase to 112 percent of last year in Wayne, 120 percent in Union, and 118 percent in Fayette county.

Condition of wheat is reported as 88 percent in Wayne county, 93 percent in Union and Fayette county, 97 percent in Randolph and 95 percent in Henry county.

The condition of rye is 94 percent in Wayne county, and Randolph coun-

ties, 95 in Henry, and 99 percent in Union and Fayette.

In the whole state, wheat acreage has decreased about one percent, and condition is slightly above the average, with a good root system and good chances for going through the winter.

In the whole country, the acreage is 1.2 percent under last year and condition is 76 percent of normal.

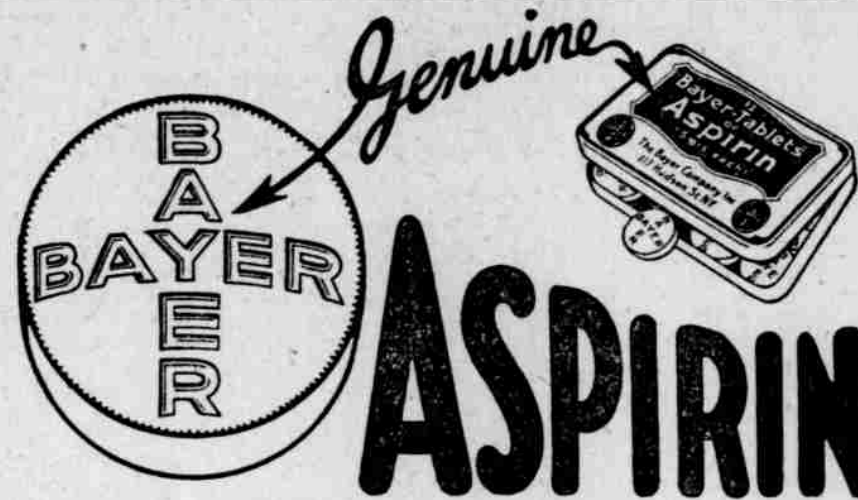
Rye acreage in Indiana shows an increased area, with condition at 95 percent, while in the United States, acreage has increased 22.6 percent over last year and condition is 92.2 percent of normal.

Wages of farm laborers have dropped from last year's figures but are still about 50 percent above the wages paid before the war. The average wages per month with board, were \$32, without board, \$40. Harvest work

the past season brought \$2.60 per day with board and \$3.25 without board, while for ordinary farm work, \$1.90 without and \$2.30 with board, was paid.

Franklin Farmers Discuss Fertilizer Purchase Monday

BETHEL, Ind., Jan. 6.—The purchase of fertilizer for spring use will be considered at a meeting of the Franklin township farmers' association to be held in Bethel Monday evening, Jan. 9. F. W. Boyle, of the Federated Marketing Service at Indianapolis, the farmers co-operative purchasing agency, will be present also to explain the operation of his department.



WARNING! Say "Bayer" when you buy Aspirin.

Unless you see the name "Bayer" on tablets, you are not getting genuine Aspirin prescribed by physicians over 22 years and proved safe by millions for

Colds Headache Rheumatism
Toothache Neuralgia Neuritis
Earache Lumbago Pain, Pain

Accept only "Bayer" package which contains proper directions. Handy "Bayer" boxes of 12 tablets—Also bottles of 24 and 100—Druggists. Aspirin is the trade mark of Bayer Manufacture of Monocetate of Salicylic Acid

Special Saturday!

Fresh Pork Shoulders, per lb. 12½¢
Fresh Ground Hamburger, per lb. 10¢
Pork Sausage, lb. 10¢
Boiling Beef, lb. 8¢
Beef Pot Roast, lb. 12½¢

Bean Bacon, lb. 10¢ No. 1 Cured Bacon, sides, lb. 18¢
Mutton Stew, lb. 6¢
Smoked Shoulders, lb. 17¢

BUEHLER BROTHERS
715 Main Street

January Clearance Sale Continued

The splendid success of our January Clearance Sale is a wonderful tribute to our store merchandise and Charge Account Plan. If you have not taken advantage of this money-saving sale, do so now, as our stock is limited.

Ladies' Suits

Formerly sold for \$50.00, now \$25.00
Formerly sold for \$40.00, now \$17.50
Formerly sold for \$29.75, now \$12.50

Ladies' Coats

Formerly sold for \$45.00, now \$29.75
Formerly sold for \$35.00, now \$22.50
Formerly sold for \$25.00, now \$15.00
Formerly sold for \$18.50, now \$10.00
Formerly sold for \$12.95, now \$5.00

Ladies' Dresses

Formerly sold for \$45.00, now \$25.00
Formerly sold for \$35.00, now \$19.75
Formerly sold for \$25.00, now \$15.00



CASH OR CREDIT

Men's Suits

Formerly sold \$50.00, now \$32.50
Formerly sold \$40.00, now \$29.75
Formerly sold \$25.00, now \$16.50

Boys' Suits

Formerly sold \$17.50, now \$12.50
Formerly sold \$13.50, now \$11.50
Formerly sold \$11.50, now \$8.50

Men's Overcoats

Formerly sold \$45.00, now \$30.00
Formerly sold \$32.50, now \$20.00
Formerly sold \$25.00, now \$15.00

Boys' Overcoats

Formerly sold \$17.50, now \$12.50
Formerly sold \$13.50, now \$9.50
Formerly sold \$10.50, now \$7.50

Richmond's
Cash
Price
Credit
Store

HIRSCH'S
15-17 North 9th St.

Take
Advantage
of This
Great Sale.
Use
Your Credit

Pillsbury's

Health Bran



Doctors everywhere prescribe Pillsbury's Health Bran for the diet. Why?

Because Pillsbury's Health Bran is the most effective form of wheat bran—not cooked or "doctored" in any way—Nature's own laxative.

Buy Pillsbury's Health Bran from your grocer and try the Pillsbury recipe for bran muffins. They're delicious.

A Member of—

Pillsbury's Family of Foods

Pillsbury Flour Mills Company, Minneapolis, Minn.