

PENNSY VETERANS CONDUCT CAMPAIGN FOR ORGANIZATIONS

Employees long associated with the Pennsylvania railroad are conducting a vigorous campaign to organize Veterans' associations on all divisions which have not already organized and to increase the membership of those already in existence. As soon as the divisional organizations are perfected it is planned to hold a Pennsylvania system convention to be attended by the officers and delegates of the various associations.

Reports received from the four regional vice presidents indicate that approximately 38,778 employees are eligible for membership in the Veterans' associations by virtue of twenty or more years of service with the Pennsylvania railroad. Of the 190,000 employees on the payroll at present, approximately 20 per cent have served the railroad and the public at least a score of years. One employee in five is classed as a veteran.

Many of the 6,185 former Pennsylvania employees now on the pension "roll of honor" are members of the Veterans' associations on the divisions where they formerly worked. Several of the local organizations have nearly a 100 per cent membership of eligible employees.

The purpose of the Veterans' employees' associations is outlined as follows in the constitution of one of the largest local units: "The object of this association shall be the encouragement and promotion of friendly intercourse and mutual regard among its members and a spirit of esteem for the corporation in whose service they are employed and enthusiastic devotion to its interests."

Since these associations were first started by the employees themselves in 1897, they have been among the most active factors in perpetuating those traditions and ideals of public service and mutual cooperation between officers and men which have been handed down through 75 years of Pennsylvania railroad history.

REV. MURRAY CALLED BY SEYMOUR CHURCH

Word has been received here that the Rev. L. E. Murray, who was pastor of the local First Christian church for nearly eight years, has been called to the pastorate of the Christian church at Seymour. It is reported that the Rev. Murray preached there last Sunday and was so well liked that the congregation prevailed upon him to stay.

The Rev. A. L. Stamper, new pastor of the local Christian church, arrived in Richmond Thursday with his family. He has two sons at home, Joseph and Allen. The former will enter Earlham and the latter will enter high school. Their residence will be at 132 South Ninth street.

ZEM ZEMS TO ENJOY FIRST ANNIVERSARY

Celebration of the first anniversary of the local Zem Zem club will be held at Jackson park, Friday, Sept. 16. An all day picnic is to be held, and the Connorsville Shrine club is to join in the festivities.

Following a basket dinner at noon, events of the day will begin at 2 o'clock in the afternoon. Among the stunts and athletic features will be a baseball game between the Richmond and Connorsville clubs, horse-shoe contests and a wheel-barrel race. A big dance is planned as the event of the night. This will be held in the pavilion.

OTTO BALDWIN HELD BY SHERIFF WADMAN

Otto Baldwin, of Dalton township, was arrested by Sheriff Carl Wadman Wednesday evening on a charge of receiving stolen goods.

Baldwin is said to have been connected with men giving their names as Abbott, Dennis and Waltz, who were arrested on charges filed in Randolph county.

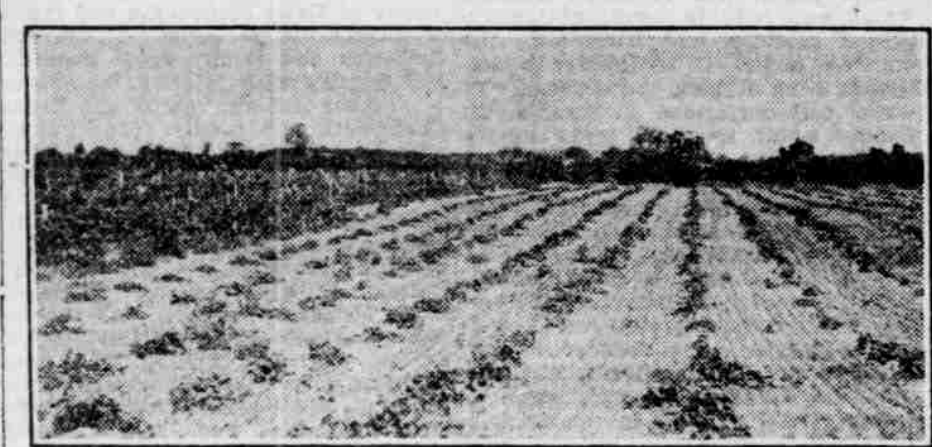
Henry Yost, who was arrested here Wednesday, was taken to Newcastle by Sheriff Wadman. He is charged with violating the state liquor law.

U. S. SELLS LAND AT PROFIT
WASHINGTON, Sept. 9.—The sale for \$254,000 of 101 acres of land in Detroit, Mich., formerly used by the army as a rifle range, was announced yesterday by Secretary Weeks. The sale price netted the government a profit of \$226,827 over the cost of the land when the army bought it twenty years ago.

FEW PEOPLE ARE AWARE VINEYARD LOCATED WITHIN HALF HOUR'S DRIVE OF RICHMOND

That there is a large vineyard within a half hour's drive of the city is probably unknown to more than a few people in Richmond, most thinking of vineyards as native to France or Spain, with none in this country nearer than California on the west or Connecticut on the east.

This yard, however, is flourishing as well as any of those at a greater distance, and in fact, was one of the



principal sources of income this year to the fruit farm on which it is located.

The vineyard, which is illustrated herewith, is located on the Martin and Wesler fruit farm near New Paris, O. The old vines are four years old, and a number of one year old vines are coming on.

For several years Walter K. Martin, formerly connected with a nursery at Greenville, has been developing a small piece of land within a mile of New Paris with a view to concentrating on fruit production. The small farm which he purchased when he first left the nursery, while only 14 acres in extent, already has been brought to a high state of production, measured by the financial returns, although still better results are expected, the highest production not having been realized yet.

Has Other Orchards
Besides the grapes, which on account of the poor weather conditions for fruit and consequent high prices, realized a neat sum of money this year, there are two peach orchards on the place, one just put out and coming into bearing. In another, which is not in such a high state of care, the peaches were set out as fillers between apple trees, to which they will soon give place. There is

also a goodly number of nice young cherry trees set on a steeply sloping hillside.

Lately Mr. Martin admitted Frank Wesler, a graduate of the horticultural course at Purdue university, to partnership. Mr. Wesler graduated from Purdue in 1918.

At the time of forming the partnership the farm was incorporated, but for a conservative capitalization, and no difficulty has been experienced in

between. These "fillers" and "semi-permanent" trees will be cut out as they age and as the other apples come into bearing, thus giving a continuous income while waiting for the orchard to attain its full production.

In addition to the grounds near the city, another tract was bought four years ago in what is commonly called the "Old Dowler place," four miles to the north of New Paris. This farm includes about 25 acres of old apple trees, which, when visited lately, were loaded heavily with fruit. Many varieties can be found, and practically all the fruit is perfect, the owners being firm believers in spraying.

A few years ago this orchard, neglected, unpruned and unsprayed, hardly produced enough perfect apples to supply the owners. The fruit was sold at so much per tree, a common price being 50 cents. When Mr. Martin took the management of the orchard he leased it for a lump sum at first, and within a short time he had it to such a state of production that last year he realized as much from four trees as the rent he paid for the whole orchard at first.

Set Out New Trees
Fruit is marketed in Dayton and Cincinnati. Old trees are being cut out and much pruning done in this old orchard and new trees are being set out wherever space admits. The need of much pruning is still apparent, and apologies were voiced for this by the owners, who state that they have not been able as yet to catch up with the work which should be done.

When the orchard was visited they were both found swinging scythes beneath the trees, a mower was being operated by another, and a fourth was cutting and piling brush. Some of the trees presented living pictures of the sort that are so often to be seen on the covers of nursery catalogs and so infrequently observed elsewhere. Young Jonathan trees, especially on the Dowler place, were

heavily loaded with deliciously colored apples, so numerous that the limbs were bending clear to the ground in many cases.

Have Spraying Apparatus
Equipment of the farm includes spraying apparatus, of course, with a gravity tank located on the highest ground. Here the spraying material is mixed in the orchard which is to be sprayed. The tank is filled by water pumped through a pipe line from the well.

There is also a caterpillar tractor, this type being necessary to negotiate the steep hills and short turns which are to be found in the orchard. It is most used in the annual cultivation of the orchards, the cover crops being disced under in late autumn. Rye is used as a green manuring crop, and a liberal acreage was seeded again this fall. No plows are used in the orchards, the disc alone being used for cultivation, and for turning under vegetation.

Neighbors, and many farmers at considerable distances as well, are watching the attempts of the Martin-Wesler corporation with considerable interest, as it is felt that fruit, if it can be grown successfully as these men seem to be proving, will add a large sum to the income of this section of the country.

IDENTIFY TRAIN VICTIM

DANVILLE, Ill., Sept. 9.—The identity of an elderly man, who was killed by a southbound passenger train on the Chicago & Eastern Illinois railway as he was walking on the tracks between Newport and Caryville, last Monday afternoon, was established by relatives as Anthony W. Wirfs of Chicago.

The tramway system of Buenos Aires, is the largest of any city in the world, there being about 350 miles of the line in operation.

ONE CENT PER ROLL

1,000,000 ROLLS

WALL PAPER

FREE—SAMPLE BOOK MAILED—FREE

WRITE OR TELEPHONE 70 DESIGNS AND COLORINGS

MARTIN ROSENBERGER

"THE WALL PAPER KING"

401-403 MAIN STREET
Opp. Court House

HEADQUARTERS
OTHER CITIES:
CINCINNATI, KY.
HAMILTON, OHIO
DAYTON, OHIO
INDIANAPOLIS, IND.
LOUISVILLE, KY.

ALWAYS RELIABLE

Nourishing Bread—

Bread made of EVANS' E-Z BAKE FLOUR has all the nourishing goodness of the most carefully selected wheats.

These wheats are scientifically blended by our secret process to produce this every-purpose flour for home use.

Your Grocer Has It

EVANS' E-Z-BAKE FLOUR

OMER G. WHELAN, Distributor

Tennis and Gym Shoes

Boys and girls, you will need shoes and slippers for gym. We have just received a large shipment of these shoes, which we offer at amazing prices.

BOYS' GYM SHOES—Leather-trimmed, heavy suction soles, all sizes..... **\$2.65**

TENNIS SLIPPERS in white or black, heavy rubber soles, all sizes..... **90c**

"QUALITY MERCHANDISE—LOWEST PRICES"

Richmond Dry Goods Co.

925-927-929 MAIN ST. RICHMOND IND.

Specials For Saturday

- Potatoes, peck, 45c; bu. **\$1.75**
- Franklin Sugar 25 lbs. **\$1.75**
- Carpenter's Flour, 24 lbs. **90c**
- King of Wayne Flour, 24 lbs. **90c**
- All Corn Flakes, 10c and **15c**
- Pumpkin, 2 1/2-lb. cans, 3 for. **25c**
- Buckeye Malt Extract **\$1.25**

Our stores are full of bargains. Come and see for yourself.



Kahle Bros.
TWO STORES
217 So. 5th 98 W. Main
Phone 2626 Phone 3038
Phone Your Order Early

Fall Has Come

SATURDAY MARKS THE OPENING OF THE NEW SEASON.

- Gindren's Gingham DRESSES. **\$1.49**
Made of standard quality plaid gingham, in the tie-back style; all sizes. Special, \$1.49.
- LIGHT OUTING **18c**
27-inch heavy weight light outing in neat stripes of pink and blue. Special, 18c yard.
- MEN'S DRESS SHIRTS **\$1.33**
Made of percale and madras, neat stripes of all colors, with soft cuffs. Special, \$1.33.
- COTTON BLANKETS **\$1.89**
Cotton blankets, medium size, woven very firm; plain gray and tan with neat borders, well napped. Special, \$1.89.
- MEN'S KHAHI PANTS **\$1.39**
Good wearing, strongly woven khaki pants, all sizes. Special, \$1.39.
- WOMEN'S SILK HOSE **\$1.37**
Fine quality silk hose in black, white, brown, tan; all sizes; double heel and toe. Special, \$1.37 pair.

Extra Special
Boy's Corduroy Suits
Made of genuine Compton corduroy; made to withstand hard wear; single-breasted, all-around belt; coat and pants are full lined with a strong lining. All ages.
\$7.95

New Fall
BLOUSES
\$5.00
Georgette
Silk Georgette
Blouses and waists, a beautiful line of colors; all latest styles.
\$2.49
Latest in
Blouses
Tricotee and silk georgette blouses in the latest styles and colors, values worth up to \$10. Special..... **\$5.49**

Saturday will be the real opening of the new Fall season. Tomorrow everyone will be wanting to shop for their new outfit, and this store will be prepared—prepared with ample stocks of all the wanted merchandise from shoes to hats. Special attention is called to the wonderful display of new ready-to-wear

The Sensation of Richmond--Our Low Prices on SUITS—COATS—DRESSES

New York Latest Styles

DRESSES

Very chic looking, indeed, and as durable as you would expect are these smart styles made in French serge, tulle, canton crepe and velour. All wanted colors.

\$16.50

COATS

Made of lustrous finish Bolivar cloth that has a deep napped surface showing a slight diagonal weave; a splendid fabric and of good warmth, with neat collar of beaver fur. Colors, navy and brown. A real \$50 value.

\$28.95

JUMPERS

The new jumpers or sleeveless slipover dresses is the newest thing out and has become very popular in serge, jersey, etc., with patent leather belts; some of them with embroidery dots in contrasting colors.

\$5.75

SUITS

Wonderfully smart styles in tricot and velour box style suits, braided trimmed, with a high turn-up beaver collar; good quality silk lining in jackets, and have well fitting skirts.

\$24.50

NEW WORSTED SKIRTS

Biggest bargain you could possibly secure in a skirt. Very latest styles, made of new skirting cloth; box pleated, plaid and checks; all regular sizes..... **\$4.98**

SILK POPLIN SKIRTS

Durable quality silk poplin skirts; colors are black, navy, blue, tan, taupe, green, etc., with neat pockets; button trimmed; all sizes..... **\$1.33**

- NEW CORSETS **\$2.49**
Excellent values in low and high bust, well made and well boned; all sizes; in pink only. Special, \$2.49.
- BABIES' COATS **\$4.98**
Made of a fine quality French serge and cashmere, with large shoulder collar; neatly embroidered. Special, \$4.98.
- HILL'S MUSLIN **16 1/2c**
at
Yard wide, fully bleached, a fine count muslin; excellent for pillow cases, etc. Special, 16 1/2c yd.
- UMBRELLAS **\$1.29**
at
Full size umbrellas, covered with a durable material, neat handles. Special, \$1.29.
- Girls' Sailor Style DRESSES. **\$3.98**
Made of good quality serge, about one-half wool, with sailor collar, neatly trimmed, wide loop running belt, in navy blue; sizes 8 to 15 years. Special, \$3.98.
- JOHNSON'S BABY POWDER **15c**
Genuine Johnson's Baby Powder. The best is none too good for the baby. Special, 15c.

Extra Special
Silk Dresses
Exceptional bargains in canton crepe and messaline, all dark colors, the latest styles, particularly pleasing designs. Special Saturday, \$9.98.

\$9.98

Just Arrived
New Purses

Stylish leather purses in bronze, tan, black, etc.; made very strong. Special..... **\$1.19**

The new spider grained bags, envelope style; well lined, with coin purse and mirror, in many colors. Special..... **\$1.69**

A Real Value in a

Bedroom Rug

Special for Saturday

9x12 Wool Fibre Rug

\$6.98

FOR HOUSECLEANING and DUSTING—Large size, extra heavy Wool Floor and Wall Brush, with one can of Cedar Oil—For Saturday only..... **98c**

Guttman Furniture Co.

405-407 Main St. Phone 6160