

## CHRIST GAVE MAN DIGNITY AND SYMPATHY, WE MUST LET IN HIS POWER, SAY BISHOPS

Delineating the character of Jesus Christ, and emphasizing three of the Master's commands to the world, the Rt. Rev. Irving P. Johnson, bishop of Colorado, made the first address of the Episcopal conference for church workers in St. Paul's Episcopal church, Tuesday night.

Preceding Bishop Johnson's address the Rt. Rev. Joseph M. Francis, bishop of the Indianapolis diocese, made introductory remarks in which he paid respects to Bishops Johnson and James Wise, of Kansas, both of whom are to be the principal speakers in the conference sessions.

"Let us consider tonight," said Bishop Johnson, "the character of Jesus Christ; not ecclesiastically or theologically, but as we would consider the character of such men as Washington or Lincoln, or any one who had done great things for the world."

**Gave Man Dignity**

"What have you today that you would not have had if Christ had not lived? What has it meant to you that he was on earth? First, I would say that Jesus Christ gave man dignity. He preached that no one is poor, or that no one is so remote, but that the love of God can reach that person.

"Next, he brought the power of human sympathy. He taught that if one should sorrow, all should sorrow, and that when one was glad all should be glad. God, through Christ, revealed the human race, the dignity of man and the love of our fellowmen. He revealed the standard of human righteousness.

"If we really loved our Lord Jesus Christ we would wear out the threshold of our church striving to serve him. We would not everlastingly say, 'What little can I do and get by.' Down at the bottom of our hearts we love ourselves. Be careful your religion is not an expression of your vanity."

**Dwells on Commands.**

Bishop Johnson then dwelled upon three commands of Christ's which if followed, assured the followers of His friendship. "They are," said Bishop Johnson, "do this, 'go ye, and be ye.'" Here Bishop Johnson referred to the Lord's last supper when he broke bread and commanded "Do this in remembrance of me;" when He commanded "Go ye into all the world, etc.," and when the Lord said "Be ye witnesses unto Me."

Bishop Johnson denounced scathingly the man who uses the Lord's name profanely. "Every time a man uses the name of Jesus Christ in an oath he is voting for Christ's conviction as a blasphemer. You are playing to the galleries and saying 'I know ye not.'"

"In going to church your purpose should be to testify that Jesus Christ is the Son of God. If you go for other reasons it is likely to be for caprice and personal vanity."

**Bishop Wise Speaks.**

The Rt. Rev. James Wise, bishop of Kansas, followed Bishop Johnson.

He spoke of the need of power in order to live, but deplored the use of this power for the treading under foot of one's fellowmen. Tracing the power in one little grain of wheat, until it had been made into bread and converted in man's body to muscle or brain power, he paused upon the marvelous works of nature.

"Yet," said Bishop Wise, "farmers plant that grain of wheat with only in

view the fact that so many grains make a bushel, and each bushel means so many dollars. Men are measuring the powers of nature by the monetary standard. The one supreme need of the people is to open their hearts and let in the power of Jesus Christ."

## PAN-PACIFIC PRESS CONFERENCE PLANNED

(By Associated Press)

COLUMBIA, Mo., June 15.—Plans for the organization of a Pan-Pacific Press conference which would meet yearly and have as its object the betterment of relations between countries bordering on the Pacific ocean were discussed here during Journalism Week at the University of Missouri.

**"111"**

ONE-ELEVEN Cigarettes

Our years of making good with millions of smokers suggests that we know how. Just buy a package and find out.

**20 cigarettes 15¢**

Guaranteed by The American Cigarette Co.

May 23 to 27, by Dean Walter Williams of the School of Journalism of the University of Missouri and representative American journalists.

The conference, it is planned, will be organized during the meeting of the World Press Congress at Honolulu next October. The day of the congress has been set aside for discussion of the organization of the conference.

**BARTHOLOMEW FARMERS BEGIN WHEAT HARVESTING**

COLUMBUS, Ind., June 15.—Wheat harvest begin in Bartholomew county Tuesday and threshing will begin be-

fore the first of next month. Local buyers are offering \$1 a bushel for new wheat, but there are no takers. The farmers refuse to contract at that price. The estimated wheat yield in the county this year is about 60 per cent of last year's crop. Rust and other diseases are held responsible for the short yield in the county this year.

**BONUS BILL GOES OVER.**

WASHINGTON, June 15.—Action on the soldiers' bonus bill was deferred Tuesday until Monday by the senate finance committee. Some committee members desired further time to study the redraft.



## New Strap Models

IN a season when strap effects are the prevailing fashion, it is gratifying to be able to present many variations of this popular style.

The models are characterized by the quality, beauty and good taste that you want your footwear to possess.

**Wessel Shoe Co.**

718 Main Street

# Firestone

## CORD TIRES

Now Selling at the Lowest Price Level in Tire History

30x3½ - - \$24.50  
32x4 - - 46.30  
34x4½ - - 54.90

(And Other Sizes in Proportion)



Tire repair men, who judge values best, class these tires as having the sturdiest carcass made. Forty-seven high-grade car manufacturers use them as standard equipment. They are the quality choice of cord users.

**\$13.95 for 30x3½** Regular Non-Skid Fabric

This new low price is made possible by strictest economies and specialized production.

Plant No. 2 was erected for the sole purpose of making 30x3½-inch Non-Skid fabric tires. With a daily capacity of 16,000 tires and 20,000 tubes, this plant permits refined production on a quantity basis.

All materials used are the best obtainable. The quality is uniform. It is the best fabric tire ever offered to the car owner at any price.

**CHENOWETH ELECTRIC SERVICE CO.**

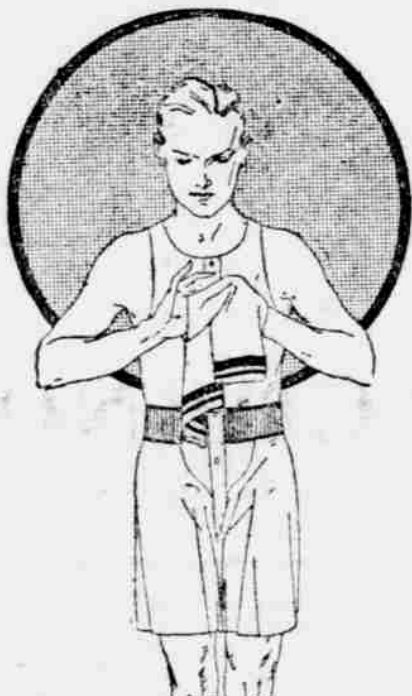
1115 Main Street

Phone 2121

## Underwear Comfort

is assured the men who come here to supply their requirements

The best styles in several weights and materials in a wide price range—and the added advantage of our prompt service make it worth your while to come here.



**LOEHR & KLUTE**

725 Main Street.

Richmond, Ind.

The Richmond Home of Hart, Schaffner & Marx Clothes.

## Sure Relief



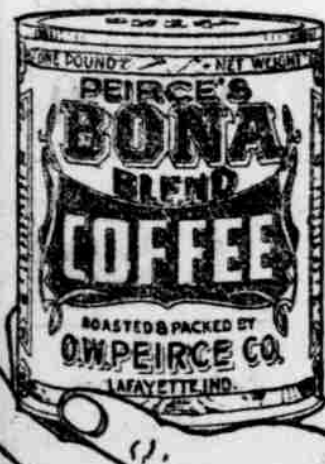
**BELL'S**  
FOR INDIGESTION



**BONA COFFEE**

A chummy—friendly drink in high favor with hundreds of coffee drinkers.

It will make good with you.



## Bakers in Spotless White

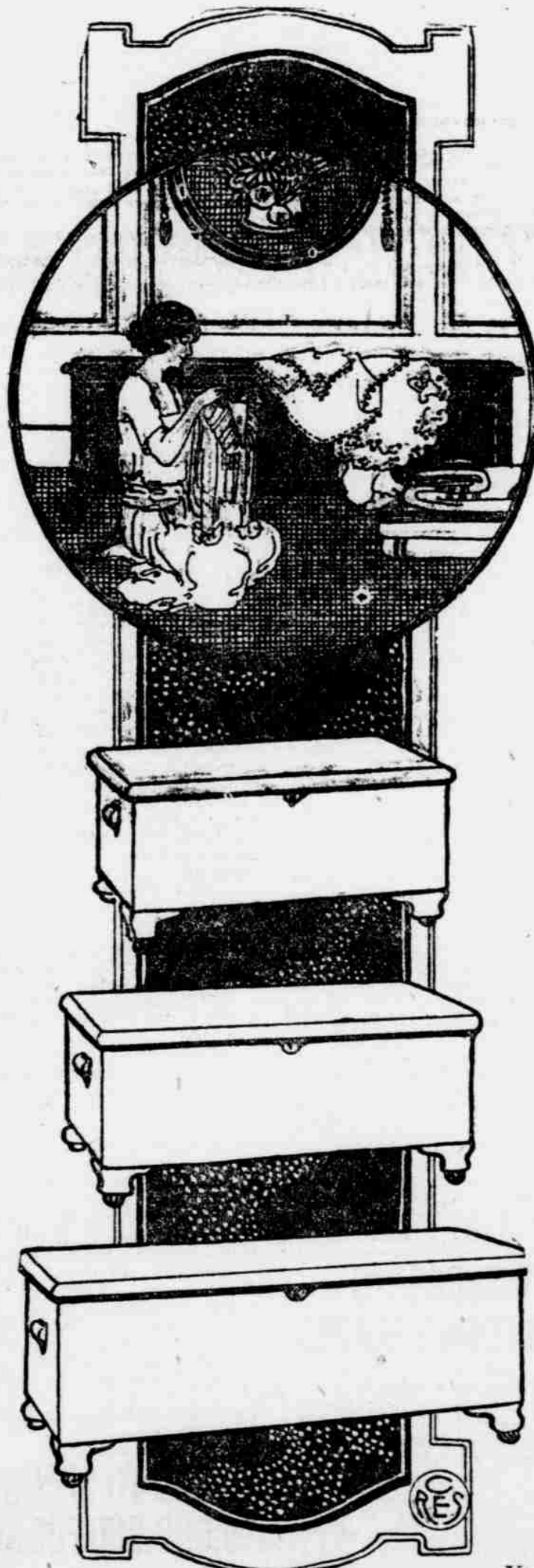
produce the superior bread which goes into wrappers.

**Betsy Ross**  
Cleanliness is a religion in our modern-type bakery. From flour sacks to delivery wagons, **Betsy Ross** bread sees practically no contact of hands, and the sealed wrapper brings it to your table as clean as when it left our great ovens.

The maximum nourishment loaf

**Betsy Ross**

Ask for  
ZWISSLER'S



## Our Second Big Cedar Chest Club

**\$1** WILL DELIVER YOUR CHEST

Store Your Furs and Winter Clothing in One of Romey's Moth-Proof Cedar Chests

To a limited number we are offering an opportunity to join our CEDAR CHEST CLUB, just opening. This gives you an opportunity to pick out the Chest you want by paying just one dollar down and the balance in small payments of ONE DOLLAR each week.

All Chests shown are of genuine Tennessee Red Cedar, carefully selected and matched for beauty of grain and highly polished to bring out the full values. All are equipped with locks, straps and easy-rolling casters.

Don't miss this opportunity of joining our CEDAR CHEST CLUB and giving your wardrobe the protection of a CEDAR CHEST on such phenomenal terms as we offer.

### Deferred Payment Plan

Many of our customers have found it inconvenient to pay the total amount of their bill at the time of purchase, and have found that our plan of deferred payment has helped them out materially. By this plan you are able to select the furniture you want, whether it be for the furnishing of a complete home or a single piece, by paying a small deposit and have the use of it while you are paying the balance. This will bear investigating.

Two large shipments just received. Our sales floor is teeming with choice, selected moth-proof

### Cedar Chests

\$1.00 as first payment will deliver your Cedar Chest today. Balance on easy weekly terms to suit YOU.

You're Welcome Always

**Romey Furniture Co.**  
920 to 926 Main St.