

First and Second Ladies of Land Essentially Home Women



Mrs. Warren G. Harding, left, and Mrs. Calvin Coolidge.

Florence Kling Harding, the new first lady of the land, possesses an unusual degree of pluck and outspokenness. She has ideas of her own on many subjects and she does not hesitate to speak her opinions straight out from the shoulder. Those who work for her count her a kindly and delightful mistress, but they know that any delinquency will call down a reprimand they will not soon forget.

All her life Mrs. Harding has been a determined and tireless worker, not only in the details of her household, but in the broader field of business and community welfare. She comes of fighting blood, her father, Amos Kling, having been a rugged power of the pioneer days of Marion. She was born there, and although in her girlhood her parents attained to mod-

erate means they were not the sort who lean to extravagance.

Helps on Newspaper

When she married Mr. Harding in 1891, his newspaper, the Star, was not yet out of the woods financially and she went to work in its business department. She applied herself to advertising and circulation problems with an eye for efficiency all along the line. She watched the original purchases of print paper and materials and she stood at the presses and gave instructions to the newsboys daily before they started on their rounds with the finished product.

It is said of her in Marion that when she became the wife of the struggling young editor she told her friends she expected to make him president some day, and it is known that at some of the most discouraging stages of the pre-convention campaign last year it

was she who insisted vigorously that the fight be continued.

Active in Campaign

During the strenuous days when thousands were marching to the front porch of the Harding residence on Mt. Vernon avenue she was the most active figure about her husband's headquarters. She was beside him every time he spoke at home or away; she shook hands with as many men and women as did he; and she was in and out of his offices from morning until night, rounding up details and giving him advice on all serious questions before him.

Late on the night of the last front porch meeting a newspaperman passing the Harding home saw someone moving about the dark recesses of the big veranda. It was Mrs. Harding, drawing the porch chairs back against

the wall for the night and softly whispering a quiet little air of contentment.

Belongs to Methodist Church

Mrs. Harding is a member of the Methodist Episcopal church, and the Hardings alternate attendance between that and the Baptist church, of which the new president is a member. She loves children and chooses horses and dogs for her pets.

Of medium height, the new first lady carries herself erect and with a charming dignity. Pictures seldom do her justice, for although her hair is streaked with silver her eyes are as bright and her glances and smiles as radiant as when she was sixteen.

Mrs. Coolidge is the mother of two active sons. She did most of her own housework even while she was first lady of Massachusetts.

County Churches

New Garden Friends church—Three-quarters mile south of Fountain City. Pastor, Miss Esther Cook. Sunday school superintendent, Mrs. Ella Bond; Sunday school at 9:30; special missionary Sunday, preaching 10:45 a. m. and 7 p. m.; Young People's society, Christian Endeavor, 7 p. m.

Whitewater Christian church—Sunday school at 8:30; superintendent, O. C. Hunt; preaching services, 10:30; evening services 7 o'clock. Pastor, Rev. William Wright.

Boston M. E. Church—Pastor, Wilbur Thorn; Sunday school superintendent, Guy Gilron; Sunday school at 9:30 a. m. Attendance last Sunday, 56; make it 75 next Sunday. The recent revival conducted by Rev. Bead-

ler of Williamsburg closed Monday night, with 26 professed conversions and 22 additions to the church. Prayer meeting every Thursday night. Next Sunday Samuel Steele, railroad conductor, from Peru, will be with us and preach morning, afternoon and night. Tuesday, March 8, Dr. Light will hold quarterly conference at this place.

Carlos Friends church—Pastor, Leslie T. Pennington; Sunday school superintendent, Charles Morrison; Sunday school, 10 a. m.; preaching, 11 a. m., subject, "The Tale of the Tub." Special, The Earlham College Glee club will entertain the people of Economy on Friday evening, March 11 at the Friends church at 7:30 o'clock. They will bring with them a magician, a soloist and a reader. Admission 20c and 35c.

Middleboro M. E. church—L. F. Ulmer, pastor, Sunday school 9:30 a. m. Clyde Thomas, superintendent; preaching and sacramental services at 10:30.

Chester M. E. church—L. F. Ulmer, pastor, Sunday school 9:45 a. m. Everett Hunt, superintendent; preaching 7:30 p. m.

Whitewater M. E. church—L. F. Ulmer, pastor, Sunday school 9:30 a. m. Ernest Newman, superintendent; class meeting, 10:30 a. m.; prayer meeting, 7:30 p. m., Wednesday.

Webster M. E. church—Sunday school 9:30, Ed Green, superintendent; a special service is being arranged for the Sunday night service at 7 o'clock; fourth quarterly conference Tuesday night, March 8. W. P. Thorn pastor.

News of the Counties

DUNLAPSVILLE, Ind.—R. L. Beck, owner of a fruit farm located two miles west of here, was injured by a falling tree recently. One leg was broken near the ankle. Mr. Beck was cutting a locust tree, which in falling caught in another and fell on him. His son Charles, working nearby, called for aid. Beck was taken to a sanitarium at Connersville and later brought back to his home.

Ohio News Flashes

COLUMBUS—Unable to live happily because he had cheated the state, Elton Lockner, who escaped from the Ohio penitentiary when serving an indeterminate sentence, came back to prison.

CLEVELAND—Plots which involved the assassination of Cleveland citi-

zens connected with the Loyal American League, the destruction by dynamite of downtown buildings and an intensive campaign of anarchistic propaganda throughout the city are believed to have been nipped by the arrest here recently of eight men, said to be members of an anarchistic group.

YOUNGSTOWN—A representative of the state board of health will come here, according to word received by local officials to investigate what is believed to be a case of typhus in a recently arrived immigrant.

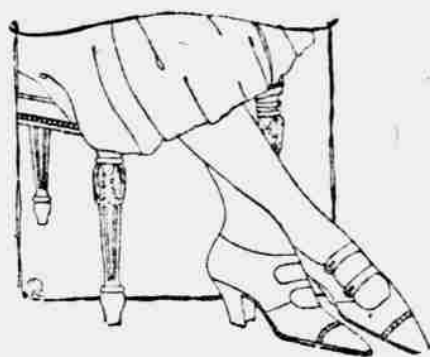
Sore or Irritated Throat  
Try Brazilian Balm

Spring Clothes for Men  
and Boys

LOEHR & KLUTE  
725 Main St.

Nature's Remedy  
NR-TABLETS-NR  
Better Than Pills  
For Liver Ills.  
Get a 25¢ Box  
Clem Thistlethwaite's, Richmond, Ind.

Charming Footwear



Black, Brown  
and Suede, with  
quarter Military  
Heel, two  
Straps

With the approach of Easter  
and the balmy spring days  
we should turn our thoughts  
to the comfort and beauty of  
our feet—

These stylish Pumps add distinction and are restful.

BLACK  
\$8.50

BROWN  
\$9.00

Beckman & Kreimeier

708 MAIN STREET

Smart New  
SUITS

—that reflect a

NEW ERA OF LOW PRICES

\$24<sup>75</sup> to \$75



They are inexpensive—these  
new custom-tailored Suits—  
but they couldn't be fashioned  
more beautifully if they cost  
twice as much.

The longer notch collars, the  
link button fastenings and  
narrow belts are especially  
smart.

You will remark at the many  
clever effects achieved by embroidery, braid, beads and  
special stitching.

336

CREATED BY Condo

In TRICOTINE, TWILL CORD, FRENCH  
SERGES, POIRET TWILLS

Navy Blue Predominates

The Geo. H. Knollenberg Co.  
RICHMOND, INDIANA

More For Your Money

PRICES LESS  
AND  
VALUES MORE

YOUR DOLLAR does double duty  
HERE. You not only get one hundred cents worth of value for every dollar, but you also get the full benefits of our

EASY PAYMENT PLAN  
which permits you to make your selections NOW, and pay as you wear.

Our CREDIT Way will show you how to SPEND your money and KEEP it, too. Makes every dollar do the work of two.

SPRING STYLES FOR  
THE ENTIRE FAMILY

CHEERFUL  
CREDIT  
AS BEFORE

DRESSES

Taffetas, Tricotines,  
Tricolettes, Mignon-  
ettes and French  
Serges, superbly  
styled and faultlessly  
tailored.

\$12.75 up

Men's SUITS

Styles to suit every  
taste, from the most  
stylish to the most  
conservative.

\$27.50 and \$34.50

Women's SUITS

Spring's smartest fashions—  
handsome, embroidered and  
plain tailored models.

\$15.98 up to \$57.50

MILLINERY

Youthful models in a wide  
variety of  
pleasing styles

\$5.00  
and up

Boys' SUITS

Stylish and serviceable garments, priced to defy competition.

\$8.00 up

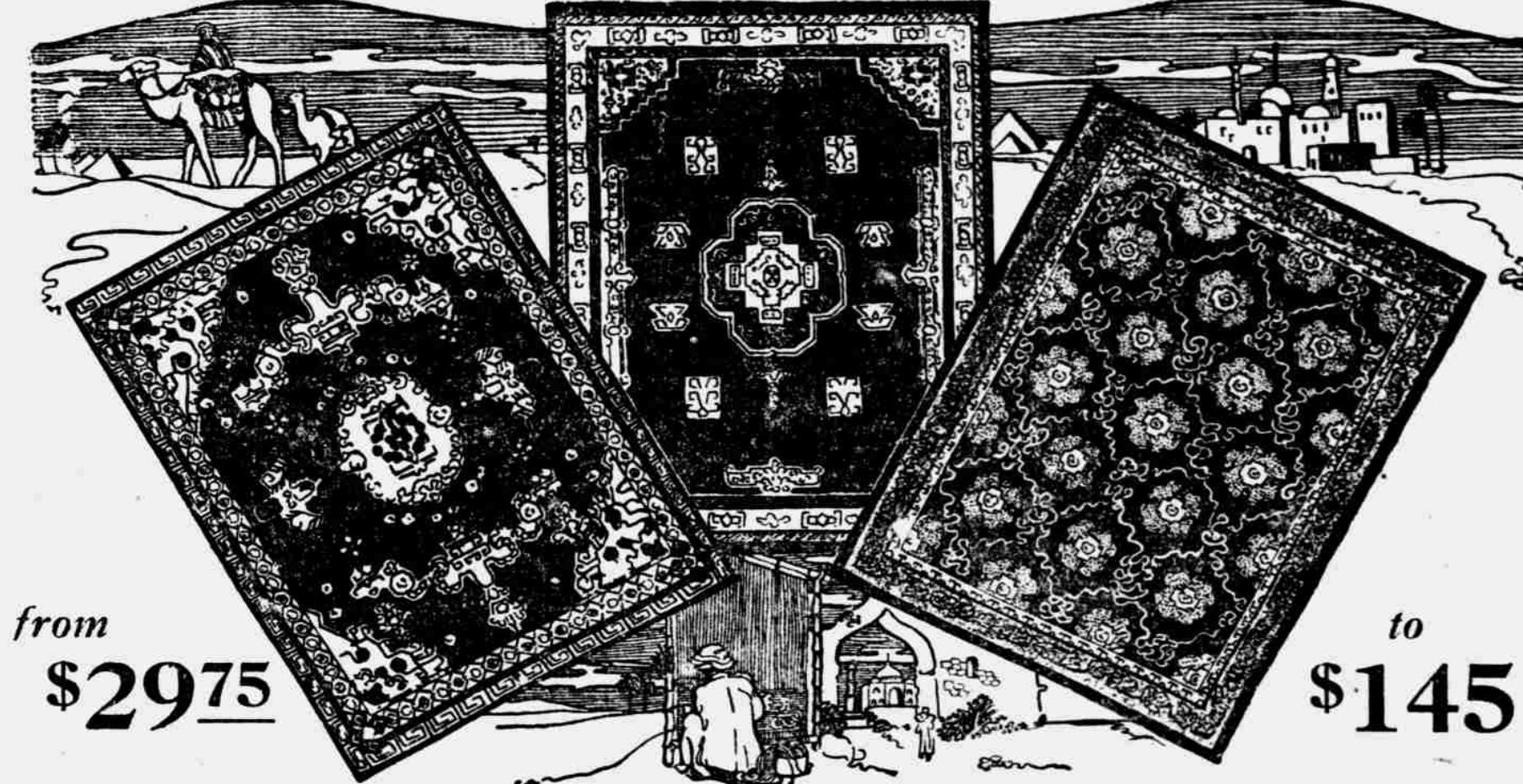
HIRSCH'S

15-17 North 9th St.

Richmond's Cash Price Credit Store

Open Saturday Night Until  
10 P. M.

RUGS ORIENTAL RUGS



from  
\$29<sup>75</sup>

to  
\$145

Choose the Right Rugs

Our immense stock and arrangement of rugs of all sizes makes careful selection easy. We will gladly give you our time with expert advice and assistance in choosing the proper patterns, blendings and colors.

The stock of beautiful rugs, both foreign and domestic, carried by this store was never more complete than it is today. You will find a visit here worth while—well worth while.

Romey Furniture Co.

920 to 926 Main