

HOLD BACK TICKETS FOR PULLMAN SEATS; DISCHARGE EMPLOYEES

The following statement has been issued through the local offices of the Pennsylvania railroad:

"Investigation of recent complaints shows that in certain cases ticket sellers employed by the Pennsylvania Railroad and authorized to sell Pullman accommodation, were holding back available space from patrons and selling it only when gratuities were forthcoming. Such practices have no place in operation of the Pennsylvania railroad and there continuance will not be tolerated under any conditions. The management is determined to wipe out absolutely as far as its own employees are concerned, all discriminatory practices which have crept in with regard to sale of accommodations. The Pennsylvania Railroad wants the public to understand that so far as its facilities are concerned, they are available to all its patrons without preference.

The rule, "First Come, First Served" is the rule of this company, and the earnest co-operation of its patrons is requested to the end that this rule may be applied absolutely. Any deviation from the above practice is in direct violation of the policy which the Pennsylvania Railroad is making every possible effort to carry out.

"In this connection, seven ticket sellers in Pennsylvania Station, New York City were recently detected receiving bribes for the furnishing of Pullman space. They have been summarily discharged from the railroad service by order of the General Manager.

Point Out Difficulties.
"The management wishes to point out that the opportunities for the manipulation of Pullman tickets arise chiefly through the liberality for rules permitting the advance sale of tickets, or reservations of space, for the greater convenience of the public. It will always be difficult absolutely to prevent troubles of this kind, unless the public will co-operate by refraining from offering gratuities and by reporting at once to the management any instances in which such gratuities are solicited.

"The only other possible course in case of further complaints from the public will be to restrict the privileges with resulting inconveniences to the travelling public, which of course it is most desirable to avoid.

"Effective on November 1st, the present arrangement, by which Pennsylvania Railroad employees sell Pullman tickets, will be discontinued in Pennsylvania Stations, New York City and the Pullman Company will install its own employees at that point. This latter arrangement was previously in effect, but was changed during the war. Ultimately it is expected that in all larger points on the Pennsylvania

System the Pullman Co. will again resume the handling of its own ticket sales."

REAL ESTATE TRANSFERS

William F. Starr to Daffler-Moser Co., \$2,000; lots 16, 17, I. E. Jones addition, City.
Howard Frame to Thomas Tarkenton, \$1; pt. N. W. 3-13-1.
Blanche Huff to Julius L. Smith and Elizabeth, \$6,250; lot 300, Haynes addition, City.
Emily Manlove et al. to Ora E. White, \$412; lot 5, block 15, Milton.
Hugh R. Foss to Blanche Huff, \$1; lot 21, H. M. Sutton's addition, City.
Mary Quatz to Julius C. Erbse, \$1; lot 328 O. map, City.
Dickinson Trust Co., Comr. to James M. Pyle, \$3,412; pt. N. W. 35-15-1.
Davis F. Pyle to Jessie L. Pyle, \$1; pt. N. W. 25-15-1.
Davis F. Pyle to James M. Pyle, \$1; pt. N. W. 35-15-1.

Damage to grain from the chinch bug in 1887 amounted to \$60,000,000.

Daughter of Professor at Miami University Is Bride of Greenfield Man

OXFORD, O., Nov. 2.—Miss Martha Elizabeth Todd, charming daughter of Dr. Edwin S. Todd, professor of economics in Miami University, was married last evening at the home of her parents to Mr. Howard W. Allen, a prominent young merchant of Greenfield. The wedding was the culmination of a romance which began three years ago when the bride and bridegroom were students of Miami. The ceremony was performed by Dr. E. E. Powell, of the university, in the presence of about 100 guests. The bridesmaids were Mrs. Roland Allen, of Greenfield, and Miss Alice Pierce, of Dayton; the maid of honor was Miss Gail Trumbo, of Springfield. The bridegroom was attended by his brother, Roland Allen, of Greenfield. Little Betty Brill, daughter of Dr. Harvey C. Brill, professor of chemistry in Miami, carried the ring. Prof. Aubrey W.

Martin, baritone, director of music in Miami, sang "I Love You Truly," and "At Dawning." The wedding march was played by Miss Edna Tighman, of the music department of Miami. The wedding was one of the most brilliant affairs of the social season.

Dramatist Reads Works.
Ridgely Torrence, poet and dramatist, of New York, this year is taking the place of Dr. A. H. Upham in the English department of Miami university, will read some of his works tomorrow afternoon, before the Drama Circle of the Oxford Woman's club. The meeting will be held in the chapel of Oxford College for Women.

Magazine Offers Prizes.
The editors of the Miami University magazine today offered prizes of \$10 each for the best short story, poem, essay and one-act play to be submitted before February 1. The contest is open to Miami students only.

To Cure Cold in One Day
Take Grove's LAXATIVE BROMO QUININE tablets. The genuine bears the signature of E. W. Grove. 30c.

ted before February 1. The contest is open to Miami students only.

Honor New Pastor.
In honor of the new pastor, Dr. George Edward Jackson, and Mrs. Jackson, the women of the First Presbyterian church will tomorrow afternoon give a social at the church from 2 to 5. The hostesses will be Mrs. Emily Hughes, Mrs. John Mollyneaux, Mrs. Louise McKee, Mrs. Sarah McClintock and Mrs. Laura Krumier.

MEXICAN GOVERNMENT TO SEIZE COAL MINES

WASHINGTON, Nov. 2.—The Mexican government plans to take over

CROUP
Spasmodic Croup is frequently relieved by one application of—

VICKS VAPORUB
Over 17 Million Jars Used Yearly

the coal mines in the Sabinas basin to relieve the coal shortage, pending an agreement between the miners and owners, according to reports received today by the Department of Commerce. The railroads are now buying coal in the United States wherever possible, the report said.

There is nothing in the world quite so nourishing or helpful as

Scott's Emulsion

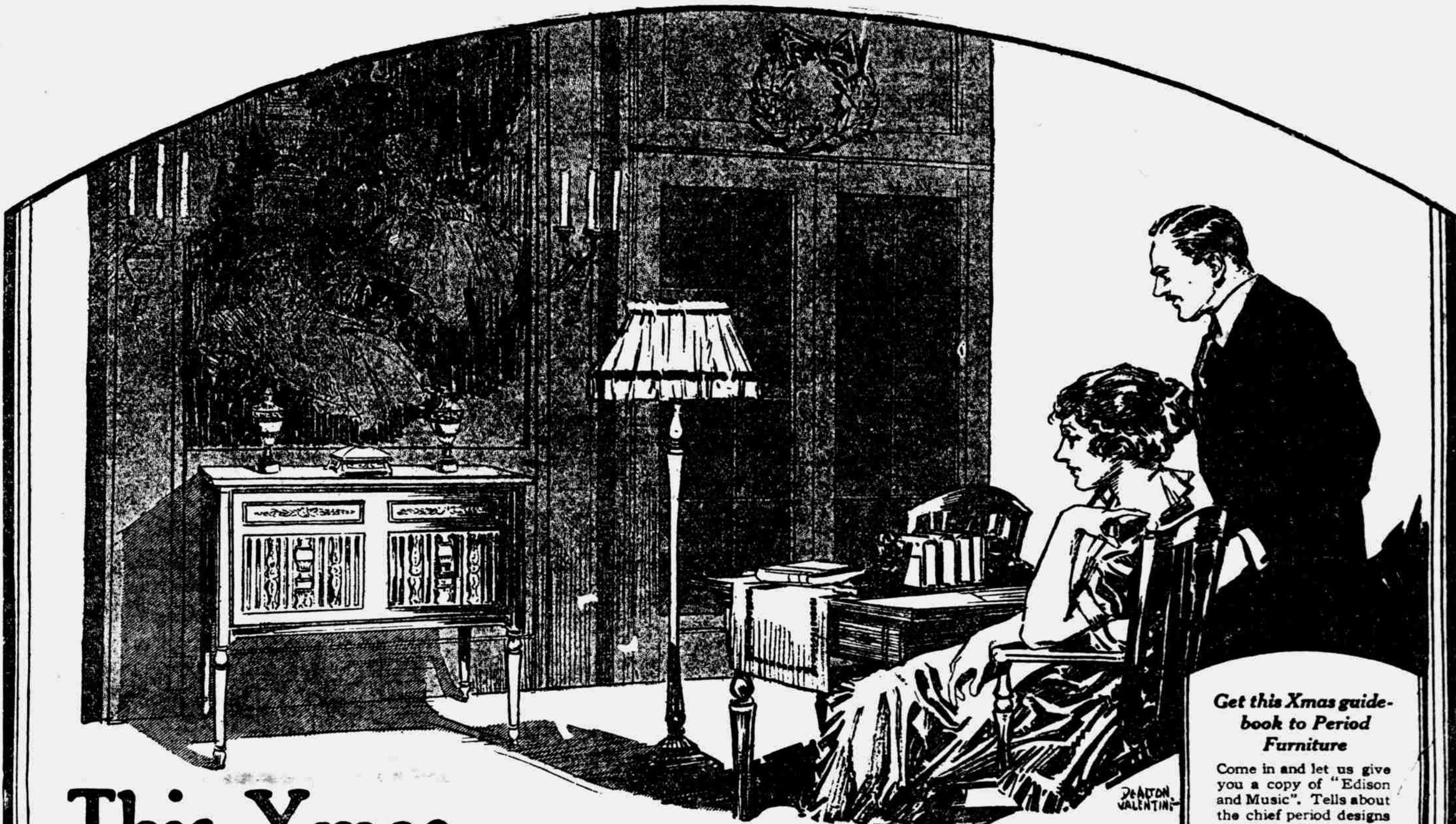
for thin, anemic girls of "teen-age." It is well-worth trying.

Scott & Bowne, Bloomfield, N. J.

Woman's Misery

The aches and pains which so many women bravely endure are to a great extent unnecessary. You will never fully realize this until you learn how quickly Lightning Hot Drops bring relief. This old, old remedy for internal and external use, is one you can always depend upon for cramps, stomach and intestinal pains, neuralgia and rheumatic pain, toothache, earache, and other hurts. Only 10c and 50c per bottle at druggists. It's guaranteed.

Lightning HOT DROPS



This Xmas let it be a Furniture Aristocrat

Get this Xmas guide-book to Period Furniture

Come in and let us give you a copy of "Edison and Music". Tells about the chief period designs—what they look like, what they stand for. Pithy descriptions. Beautiful illustrations. Just the information you want.

Let us show you what an exquisite thing a phonograph cabinet can be.

Every New Edison on our floor—no matter what its price—is encased in a genuine period cabinet.

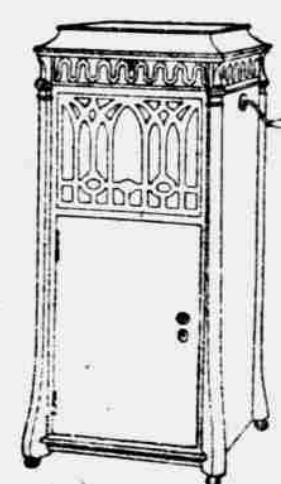
Period Furniture is the world's most exquisite development of furniture. It originated in the 16th, 17th, and 18th Centuries. Europe was ruled by a Gorgeous Aristocracy. Fine living was the ideal of the day. An unparalleled race of artists, architects, and designers built palatial living-places for kings and nobles, and furnished them. The palaces of the nobility became treasure-houses of fine

furniture. It was called the "Golden Age of Furniture."

So Mr. Edison had his designers go back into the manor houses of England, the chateaux of France and the castles of Italy. They adapted 17 designs from historic masterpieces. They preserved entire "the character and feeling of the best periods" in these superb phonograph cases for the modern American home.

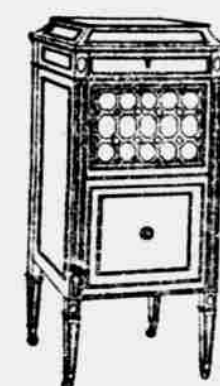
No matter which Edison cabinet you choose, you get both the arts that make your house a cultured home—music perfectly RE-CREATED and furniture of purest period source. What finer gift for all the family?

The NEW EDISON "The Phonograph with a Soul"



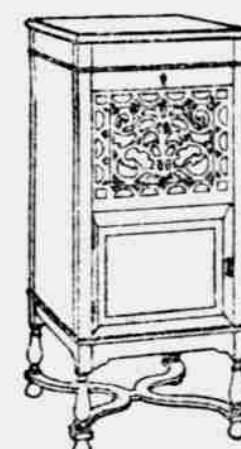
Chippendale

The French Gothic grille, the long posts, and the artistic outward curve of the legs lend full-length grace and dignity to this case.



Sheraton inlay

Embodies the graceful tapering leg, and the rectangular treatment so dear to the great English designer.



William and Mary

Charmingly expressive of the grace and delicacy of this period. Takes us back to King William's marquetry workers.

Other Models:

Elizabethan
Queen Anne
Umbrian
Jacobean
Louis XIV
Heppelwhite
Sheraton (without inlay)
XVIII Century English
Italian (Consol table)
Sheraton (Consol table)
French Gothic
(3 styles hand-carved)

Do you know about our Budget Plan?

—how it brings your New Edison for Christmas?—how it makes 1921 help pay for it?—how it utilizes thrift and system to stretch your dollar? Ask about it!



MURINE Night and Morning
Have Clean, Healthy
Eyes. If they Tired, Itch,
Smart or Burn, If Sore,
Irritated, Inflamed or
Your Eyes Granulated, use Murine
often. Soothes, Refreshes. Safe for
Infant or Adult. All Druggists. Write for
Free Eye Book. Murine Eye Remedy Co., Chicago

BRACELET WATCHES

That are dependable, in all
styles and grades.
Our personal guarantee goes
with each watch. Priced \$15.00
to \$75.00.



LADIES' WOOL HOSE

\$2.50 values, while they last—

\$1.75

Fashion Shop
618 MAIN ST. BETWEEN 12TH & 13TH

SHOT GUN SHELLS

75c Box

SAM S. VIGRAN

617 Main St.

ATTENTION, ELKS!

Election Returns

(Direct Service)

Band Concert

(Richmond City Band)

Lunch

AT CLUB ROOMS ELECTION

NIGHT

For Elks and Their Friends

John's
Where Prices Meet the Modest
Purse

A SURE WINNER

TRACY'S

Fresh Roasted Coffee

Women's FLANNELETTE GOWNS

\$2.98 grade, now at\$2.49
\$2.49 grade, now at\$1.98
\$2.39 grade, now at\$1.98
\$2.19 grade, now at\$1.49
\$1.69 grade, now at\$1.25

The Grand Leader

**HARRISON'S
EDISON SHOP**
"IN THE WESTCOTT PHARMACY"