

# Markets

## GRAIN PRICES

CHICAGO, March 25.—Market acts very conservative. The corn inquiry news is much improved but large buying by the leaders is absent. In addition, news is easy. Kansas gets good rains. Cash corn mainly unchanged. Argentine corn looks like supply for Africa and eastern United States. The bear raid on lard and the realization that immense lard stocks must remain for months has been a weight on corn.

CHICAGO GRAIN RANGE  
Furnished by E. W. WAGNER & CO.,  
212 Union National Bank Building,  
Chicago, Phone 1720.

CHICAGO, March 25.—Following is the range of futures on Chicago Board of Trade today:

	Open	High	Low	Close
May	176 1/4	176 3/4	173	173 3/4
Sept.	156 1/4	157 1/4	153 1/4	153 3/4
Oct.	147 1/4	148 1/4	144 1/4	145 1/4
Nov.	87 1/4	87 3/4	85	85 3/4
Dec.	69 1/4	70 1/4	68 1/4	69 3/4
Jan.	37.00			36.50
Feb.	21.40			20.67
Mar.	19.12			18.90

(By Associated Press)  
CHICAGO, March 25.—Corn—No. 3 mixed, \$1.59 1/2; No. 2 yellow, \$1.68; Oats—No. 2 white, 95 1/2¢; No. 3 white, 94 1/2¢; Pork, nominal; ribs, \$18.00; lard, \$19.87.

(By Associated Press)  
TOLEDO, O., March 25.—Cloverseed—Prime cash and March, \$33.75; Apr., \$33.00; Oct., \$24.45.  
Alfalfa—Prime cash and March, \$36.00; April, \$36.00.  
Timothy—Prime cash, 1917, and 1918, \$5.85; 1919, \$6.02 1/2; March and April \$6.02 1/2; May, \$6.00; July, \$6.30.

(By Associated Press)  
CINCINNATI, O., March 25.—Wheat—No. 2 red, \$2.66 1/2; No. 3 red, \$2.60 1/2; other grades as to quality, \$2.20 to \$2.56. Corn—No. 2 white, \$1.66 1/2; No. 3 white, \$1.63 1/2; No. 4 white, \$1.59 1/2; No. 2 yellow, \$1.64 1/2; No. 3 yellow, \$1.61 1/2; No. 4 yellow, \$1.58 1/2. Corn—No. 2 mixed, \$1.63 1/2.

## LIVE STOCK PRICES

INDIANAPOLIS, March 25.—Hogs—Receipts 7,000; lower. Cattle—Receipts 1,400; slow and weak. Calves—Receipts 900; strong. Sheep—Receipts 100; steady.

HOGS.  
Good mixed, 140 lbs. up, average, \$14.75 to \$16.25; assorted, 140 to 225 lbs. average \$16.00 to \$16.35; assorted, 225 to 275 lbs. average \$14.75 to \$15.00; selected, 275 lbs. up, \$14.50 to \$15.00; fat hogs, weighing down to 140 lbs., \$16.00 to \$16.25; fat back pigs, \$15.50 to \$16.00; light pigs, \$15.50 down; feeding pigs, \$15.50 down; sows, according to quality, \$11.00 to \$13.00; bulk of sows, \$12.25 to \$12.75; poor to best sows, 80-lb. dock, \$10.00 to \$13.00; sales in truck market, \$15 to \$16.00.

CATTLE  
Killing Steers—Extra good, 1,300 lbs. and upward, \$14.00 to \$14.25; good to choice, 1,250 lbs. and upward, \$13.25 to \$13.75; common to medium, 1,250 lbs. \$12.50 to \$13.00; good to choice, 1,100 to 1,200 lbs., \$12.00 to \$12.50; common to medium, 1,100 to 1,200 lbs., \$11.50 to \$12.00; good to choice, 1,000 to 1,100 pounds, \$11.25 to \$11.75; common to medium, 1,000 to 1,100 pounds, \$10.50 to \$11.50; fair to good, under 1,000 lbs., \$10.00 to \$11.00; good to choice yearlings \$11.50 to \$13.00.

Heifers—Good to best, 800 lbs. and up, \$11.00 to \$13.00; common to medium, 800 lbs. up, \$9.50 to \$10.75; good to best, under 800 lbs., \$10.50 to \$13.00; common to medium, under 800 pounds, \$8.00 to \$10.25.

Cows—Good to best, 1,050 lbs. and upward, \$9.75 to \$12.00; common to medium, 1,050 lbs., \$9.00 to \$9.50; good to best, under 1,050 lbs., \$7.50 to \$10.00; common to medium under 1,050 lbs., \$8.00 to \$9.00; canners and cutters, \$5.00 to \$8.00.

Bulls—Good to best, 1,300 lbs., upward, \$9 to \$10.00; good to choice under 1,300 lbs., \$8.50 to \$9.50; fair to medium, under 1,300 lbs., \$7.50 to \$8.00; common to good bolognas, \$7.00 to \$7.50.

Calves—Good to choice veals, under 200 pounds, \$18.50 to \$20.50; common to medium veals, \$13.00 to \$17.00; good to choice heavy calves, \$10.00 to \$12.00; common to medium heavy calves, \$8.00 to \$9.50.

Stockers and Feeding Cattle—Good to choice steers, 800 lbs. and up, \$10.00

@11.00; common to fair steers, 800 lbs. and up, \$9.00 to \$10.00; good to choice steers, under 800 lbs., \$9.50 to \$10.00; common to fair steers, under 800 lbs., \$8.00 to \$9.00; medium to good heifers, \$7.00 to \$8.00; medium to good cows, \$6.00 to \$7.00; good to choice milkers, \$10.00 to \$13.00; fair to medium milkers, \$7.50 to \$10.00; springers, \$7.50 to \$10.00; stock calves, 250 to 400 lbs., \$7.00 to \$10.00.

SHEEP AND LAMBS  
Good to choice sheep, \$9.00 to \$10.00; western fed lambs, \$17.00 to \$19.00; good to choice lambs, \$17.00 to \$18.00; common to medium lambs, \$12.00 to \$16.00; bucks, per 100 lbs., \$7.00 to \$8.00; Shorn stock valued about \$2 a 100 pounds lower than wool stock.

DAYTON MARKET  
Corrected by McLean & Company,  
Dayton, Ohio. Bell Phone,  
East 28; Home 2255.

DAYTON, O., March 25.—Hogs—Receipts, 6 cars; lower; choice heavies, 240 lbs. upward, \$15.00; packers and butchers, \$16.00; light Yorkers, \$15.00 to \$15.50; pigs, \$13.00 to \$14.00; heavy Yorkers, \$16.00; stags, \$8.00 to \$9.00; bologna fat sows, \$12.00 to \$12.50; common to fair, \$10.00 to \$11.00.

Cattle—Receipts, 7 cars; steady; fair to good shippers, \$19 to \$21; good to choice butchers, \$9 to \$10; fair to medium butchers, \$8 to \$9; fair to good heifers, \$7 to \$9; choice fat cows, \$8.00 to \$9.00; fair to good fat cows, \$6 to \$7.50; bologna cows, \$4 to \$6; butcher bulls, \$7.50 to \$8.00; bologna bulls, \$7.00 to \$8.00; calves, \$12.00 to \$13.00.

Sheep—Receipts, light; market, steady; sheep, \$5.00 to \$8.00; lambs, \$12.00 to \$15.00.

(By Associated Press)  
CINCINNATI, O., March 25.—Receipts—Cattle, 800; hogs, 4,500; sheep 10.  
Cattle—Market slow and weak; steers, good to choice, \$11.50 to \$13.00; fair to good, \$9.50 to \$11.50; common to fair \$7 to \$9.50; heifers, good to choice, \$10.50 to \$12.50; fair to good \$8.50 to \$10.50; common to fair \$6.50 to \$8.50; cows, good to choice, \$9 to \$10.50; fair to good, \$7.50 to \$9; cutters, \$6 to \$7.50; canners, \$4.50 to \$5.50; stock steers, \$6.50 to \$10.50; stock heifers, \$6.50 to \$8.50; stock cows, \$5.50 to \$7; bulls, dull; bologna, \$8 to \$9.50; fat bulls, \$9 to \$10; milch cows, steady, \$6 to \$10; calves, 30 cents lower; extra, \$19 to \$19.50; fair to good, \$13 to \$19; common and large, \$6 to \$12.

Hogs—Market steady, 25c lower; heavies, \$15.00 to \$15.75; good to choice packers and butchers, \$16.00 to \$16.25; medium, \$16.25; stags, \$8.00 to \$9.00; common to choice heavy fat sows, \$9.00 to \$12.75; light shippers, \$16.00 to \$16.25; pigs, 110 pounds and less, \$10.00 to \$14.25.

Sheep—Steady; good to choice, \$10.00 to \$11.00; fair to good, \$7.00 to \$10.00; common, \$4.00 to \$6.00; bucks, \$4.00 to \$8.00; Lambs, steady; good to choice, \$18.00 to \$19.00; seconds, \$15.00 to \$17.00; fair to good, \$17.00 to \$18.00; common skips, \$10.00 to \$14.00.

(By Associated Press)  
EAST BUFFALO, March 25.—Cattle—Receipts, 125; light, steady.  
Calves—Receipts 700; 50 cents lower; \$6.00 to \$22.00.

Hogs—Receipts, 2,400; 25¢ to 75¢ cents lower; heavy, \$15.00 to \$16.00; mixed, \$16.50 to \$16.75; Yorkers, \$17.00 to \$17.10; light Yorkers, \$16.50 to \$17.10; pigs, \$16.25 to \$16.50; roughs, \$13.00 to \$13.50; stags, \$8.00 to \$10.50.

Sheep and Lambs—Receipts, 600; steady, unchanged.

(By Associated Press)  
PITTSBURGH, Pa., Mar. 25.—Hogs—Receipts 1,000; market steady; heavies \$15.00 to \$15.75; heavy Yorkers, \$17 to \$17.50; light Yorkers \$16.25 to \$16.50; pigs, \$16 to \$16.25.  
Sheep and Lambs—Receipts 1,700; market steady; top sheep \$16.00; top lambs \$20.00.  
Calves—Receipts 215; market is steady; top \$21.00.

(By Associated Press)  
CHICAGO, March 25.—Hogs—Receipts, 32,000; market, lower; bulk, \$14.20 to \$15.60; top, \$15.75; heavies, \$13.70 to \$15.00; medium, \$14.60 to \$15.70; lights, \$15.25 to \$15.75; light lights, \$14.75 to \$15.50; heavy packing sows, smooth, \$13.00 to \$13.50; heavy packing sows, rough, \$12.40 to \$12.90; pigs, \$13.40 to \$15.25.

Cattle—Receipts, 12,000; market, steady; beef steers, medium and heavies, choice and prime, \$13.50 to \$15.25; medium and good, \$11.50 to \$13.50; common, \$10.25 to \$11.50; light weight, good and choice, \$12.00 to \$14.75; common and medium, \$10.00 to \$12.00; butcher cattle, heifers, \$7.50 to \$13.00; cows, \$7.50 to \$11.75; canners and cutters, \$5.00 to \$7.40; veal calves, \$16.25 to \$17.50; feeder steers, \$9.00 to \$12.00; stocker steers, \$7.50 to \$12.50; market, steady; lambs, \$17.50 to \$20.25; culls and common, \$14.00 to \$17.25; ewes, medium,

good and choice, \$11.00 to \$15.00; culls and common, \$6.00 to \$10.75.

## PRODUCE MARKET

(By Associated Press)  
CHICAGO, March 25.—Butter—Market, unchanged. Eggs—Receipts, 17,106 cases; market, higher; firsts, 43 1/2¢. Live poultry—Market, higher; fowls, 43¢; springs, 39¢. Potatoes—Steady; receipts, 44 cars; northern round and long whites, sacked, \$5.85 to \$5.90; bulk round, \$5.90 to \$6.00; Idaho russets, sacked, \$6.40 to \$6.50.

(By Associated Press)  
CINCINNATI, March 25.—Butter fat—Steady. Eggs—Steady; prime firsts 42¢; firsts, 40¢ to 41¢; seconds, 39¢. Poultry—Steady; springs, 55¢; hens, 40¢; turkeys, 36¢.

## LIBERTY BONDS

(By Associated Press)  
NEW YORK, March 25.—Prices on Liberty bonds today at 2:55 p. m. were:  
3 1-2 ..... 97.42  
First 4 ..... 90.30  
Second 4 ..... 89.32  
First 4 1-4 ..... 90.60  
Second 4 1-4 ..... 92.60  
Third 4 1-4 ..... 89.70  
Fourth 4 1-4 ..... 97.50  
Victory 3 3-4 ..... 97.56  
Victory 4 3-4 ..... 97.56

## NEW YORK STOCK LIST

(By Associated Press)  
NEW YORK, March 25.—The closing quotations on the stock exchange were:  
American Can, 47 1-2.  
Am. Smelting, 67 1-4.  
Anaconda Cop., 63 3-4.  
Bethlehem Steel, 95.  
Chesapeake and Ohio, 66 1-2.  
Chino Copper, 36 1-8.  
General Motors, 38 1-2.  
Goodrich Tires, 69 1-4.  
Mexican Petroleum, 197.  
Pennsylvania, 42 3-4.  
Reading, 84 7-8.  
Studebaker, 104.  
Union Pacific, 119 7-8.  
U. S. Steel, 102.  
Utah Copper, 77 1-2.

## LOCAL HAY MARKET

Steady—No. 1 timothy, \$30.00 to \$31.00; clover, \$32.00 to \$33.00.

(By Associated Press)  
INDIANAPOLIS, March 25.—Hay—Firm; No. 1 timothy, \$24.00 to \$24.50; No. 2 timothy, \$33.00 to \$33.50; No. 1 clover, \$32.50 to \$33.00.

## BUTTER QUOTATIONS.

The wholesale price for creamery butter is 70 cents a pound. Butter fats delivered in Richmond, bring 71 cents a pound.

## FRUIT & VEGETABLES

LOCAL PRODUCE  
Beets, 10c bunch; leaf lettuce, 30c lb.; head lettuce, trimmed, 25c to 40c lb.; dry onions, 10c lb.; parsley, 15c bunch; green mangoes, 8c each; garlic, 75c lb.; cabbage, 10c lb.; celery, 10c to 15c bunch; spinach, 20c to 25c lb.; sweet potatoes, 10c lb.; rutabagas, 5c lb.; Spanish onions, 15c lb.; shallots, 10c bunch; white radishes, 5c bunch; red radishes, 15c bunch; Brussels sprouts, 40c quart; cauliflower, 20c to 30c lb.; cucumbers, 30c lb.; sweet potatoes, 10c lb.; rutabaga; Irish Potatoes, 7 1-2 to 8c lb.; green peas, 30c lb.  
Eggs, 40c to 43c dozen; creamery butter, 78c to 80c lb.; country butter, 65c lb.; turkeys, 65c lb.

Fruits.  
Bananas, 12 to 12 1/2¢ lb.; lemons, 40c dozen; walnuts, 10c lb.; apples, 10c lb.; grape fruit, 5c to 10c each; oranges, 60c to 75c doz.; tangerines, 60c doz.; strawberries, 1 1/2 quart; rhubarb, 30c lb.; pears, 5c each; large eating apples, 5c and 10c each.

Produce, Buying.  
Country butter, 50c to 55c lb.; eggs, 35c dozen; old chickens, 30c lb.; frying chickens, 30c lb.; turkeys, 45c lb.

## LOCAL GRAIN MARKET

Richmond flour mills are paying \$2.33 for No. 1 Red wheat; \$2.30 for No. 2; \$2.26 for No. 3; No. 4, \$2.16.

## LOCAL QUOTATIONS

(Furnished by Whelan)  
Oats, 90c; rye, 15¢; straw, per ton, \$8.00; new corn, \$1.50 per bushel.

SELLING  
Cottonseed Meal, per ton, \$50; per cwt., \$4.15; Oil Meal, per ton, \$55.00; cwt., \$4.50; Tankage 60 per cent, \$117 per ton; cwt., \$6.00; Quaker Dairy Feed, per ton, \$56.00; per cwt., \$2.85; Salt, per bbl., \$3.00. Wheat bran, per ton, \$56.00; cwt., \$2.85; pure wheat middlings, per ton, \$61.00; per cwt., \$3.15; standard middlings, per ton, \$60.00; per cwt., \$3.15.

INTEREST PAID JAN. 1ST, 1920 ON ALL SAVINGS ACCOUNTS WITH  
**6% THE PEOPLE'S HOME AND SAVINGS ASSOCIATION**  
Start your Savings Account with us any time and get dividend July 1st and Jan. 1st following.

# QUIGLEY'S

QUALITY  
SERVICE  
CUT PRICES



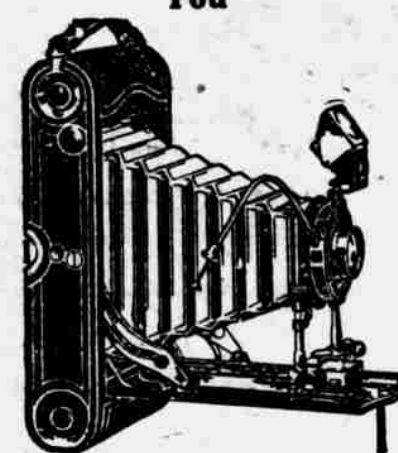
CIGARS  
DRUGS  
CUT PRICES

## THE SAN TOX DRUG STORES WEEK-END SPECIALS

### Cigar Specials for Friday and Saturday

La Fendrich, regular 2 for 25c, special ..... 10c straight  
Cian (Invisible) regular 8c, special ..... 5c straight  
Doctor Nichol (Broadleaf) regular 8c, special ..... 5c straight  
Hi-Vulta (Long Filler) regular 8c, special ..... 5c straight  
San Torin, regular 8c special ..... 5c straight

"Take a Kodak With You"



Try Quigley's  
"GLOSS TONE"  
finish for your kodak pictures

You know that dandruff means baldness—it keeps collecting, forms in layers and robs the hair of nutrition. The first application of San Tox Hair Tonic will loosen up the dandruff and supply nourishment

We are exclusive distributors for Tan-Lac (The Master Tonic).

A full line of Catholic Prayer Books, Rosaries etc., carried in our 4th and Main Street Store.

## HAIR BRUSH SPECIAL

Solid back, five-row bristle, regular 75c value; special—

59c

## Flashlight Special

Universal Flashlight complete—regular \$1.25, special for ..... 98c

## San Tox Scientific Tooth Brush

The Brush that cleans your teeth; regular 75c—special for ..... 47c

We have a complete stock of the following lines:

MARY GARDEN  
MELBA  
DJER-KIS  
VANITY FAIR  
AZUREA  
LA TREFLE  
DAY DREAM  
MAVIS  
DORNIS  
HUDNUTS  
COLGATES  
VANTINES  
STEINS  
PINAUDS

## SOAP SPECIALS

15c Palm Olive Soap, 3 for ..... 25c  
15c Remmer's Peroxide Bath Soap, 3 bars for ..... 25c  
15c Mt. Oret Floating Castile Soap, 3 for 25c  
15c Hard Water Castile Soap, 3 for ..... 25c  
10c Ivory Soap, 2 for 15c  
10c P. & G. Soap, 2 for 15c  
10c Goblion Soap ..... 5c  
10c White Borax Naptha Soap, 3 for ..... 20c  
15c Lux ..... 11c  
10c Golden Rod Washing Powder ..... 5c

## COLORITE

Sixteen Colors to select from—

25c

Chocolate covered cherries in fancy boxes, regular 90c value; special—

69c

8-Cent SEARCHLIGHT MATCHES 5 for ..... 25c

Gather renewed energy and vigor for the coming summer months—Nylas Hot Springs Blood Remedy will cleanse the blood, increase the circulation and make you feel like new, large bottle, \$1.00

## Friday and Saturday Specials

\$1.25 PINKHAM'S COMPOUND	98c	60c NUJOL—	43c
\$1.20 SWAMP ROOT	98c	for	
60c SWAMP ROOT	49c	\$1.00 NUJOL—	83c
		for	
\$1.10 S. S. S.—	73c	60c MULSIFIED COCA-NUT OIL	43c
for		30c PONDS VANISH-ING CREAM	23c
\$1.90 S. S. S.—	\$1.39	60c PONDS VANISH-ING CREAM	47c
for		75c Wyeths Sage and Sulphur for	63c
\$1.25 DRECO—	\$1.09	60c DOAN'S KIDNEY PILLS for	49c
for		60c PEBECCO TOOTH PASTE for	43c
\$1.25 ASPIRIN (Bayers)	98c		
for			
\$1.00 PEPGEN—	71c		
60c PINEX—	49c		
for			

PALLADIUM WANT ADS BRING RESULTS

## PETITION FOR DIVORCE

State of Indiana, Wayne County, ss.: Elda B. Schlenker, vs. Howard Schlenker, Wayne Circuit Court, January Term, 1920. No. 18970.  
Be it known that on the 10th day of March, 1920, the above named Plaintiff, by her Attorney, filed in the office of the Clerk of the Wayne Circuit Court her Petition against said Defendant for a Divorce and change of name.

Said Plaintiff also filed with said complaint the affidavit of Orion L. Rose, a disinterested person, showing that said Defendant is not a resident of this State, and also her own affidavit showing that her causes for Divorce, stated in her said Petition, are cruel and inhuman treatment.

Said Defendant is therefore hereby notified of the filing and pendency of such Petition, and that unless he appears and answers or demurs thereto, on the calling of said cause on the 12th day of May, 1920, at the Term of said Court to be begun and held at the Court House in the City of Richmond, on the 1st Monday of April, 1920, said cause will be heard and determined in his absence.

Witness the Clerk, and the Seal of said Court, at the City of Richmond, this 10th day of March, 1920.  
LINUS P. MEREDITH, Clerk.  
Ray K. Shiveley, Attorney for Plaintiff  
March 11-15-26

## NOTICE TO BIDDERS

State of Indiana, Wayne County, ss.: Notice is hereby given that the Board of County Commissioners of Wayne County will receive sealed bids and proposals for the Poor Farm groceries for the months of April, May and June, 1920, in accordance with the specifications on file in the County Auditors' office.

Bids will be received until 11 o'clock a. m., on Monday, April 5, 1920, at the County Auditor's office at the court house in the city of Richmond. Bids must be submitted on blanks designated by the State, which may be procured of the Auditor of Wayne County.

Each bid shall be accompanied by a personal or surety bond in a sum not less than the amount of the bid, and in all respects conform with the law governing such matters.

The Board reserves the right to reject any and all bids.  
By order of the Board of County Commissioners of Wayne County.  
W. HOWARD BROOKS,  
Auditor Wayne County.

mar25-1t

## NOTICE TO BIDDERS

State of Indiana, Wayne County, ss.: Notice is hereby given that the Board of County Commissioners of Wayne County will receive sealed bids and proposals for the construction of the superintendents cottage at the Tuberculosis Hospital at 11 o'clock a. m. on Saturday, April 24, 1920, at the County Auditor's Office in the Court House in the City of Richmond, Indiana.

Bids will be received for the completion of said work in accordance with the plans and specifications on file in the County Auditor's office of Wayne County.

Bids must be submitted on blanks designated by the State, which may be procured of the Auditor of Wayne County.

Each bid shall be accompanied by a personal or surety bond in a sum not less than the amount of the bid, and in all respects conform with the law governing such matters.

The Board reserves the right to reject any and all bids.  
By order of the Board of Commissioners of Wayne County.  
W. HOWARD BROOKS,  
Auditor Wayne County.  
Mch 25-Apr. 1

MONEY TO LOAN 46

# MONEY --to-- LOAN

Any amount from \$10.00 to \$300.00 on personal property, household goods, pianos, live stock, farm implements, etc. left in your possession. No commission charged for making the loan. Interest charged only for the actual time the loan is carried; and all dealings

STRICTLY CONFIDENTIAL  
EASY TO BORROW  
EASY TO PAY.

Will buy mortgages.  
**H. B. CUSTER**  
710 1/2 Main St. Phone 2962

MONEY TO LOAN 46 MONEY TO LOAN 4