

FARMERS, LABORERS, GET MARRIED, NOT WHITE-COLLAR MEN

More marriages since Jan. 1, 1920 have been celebrated by farmers and those engaged in industrial positions, among bookkeepers, clerks, executives and others in offices, according to statistics in the county clerk's office.

Of the 50 men who have received marriage licenses since Jan. 1, 11 were issued to farmers, four to laborers, two each to railroaders, mechanics, salesmen, conductors and merchants, while all other occupations have but one each.

Of the 50 better halves, only four different occupations have more than one representative. They are domestics with two; nurses, with 5; housekeepers with 3, and clerks with 4. Twenty-six of the applicants have no business occupation.

Some of the occupations given by male applicants follow: Factory worker, machinist, engineer, farmer, teacher, blacksmith, laborer, car repairman, clerk, railroad, iron worker, teamster, mechanic, cabinet maker, purchasing agent, stone mason, laundry manager, salesman, conductor, insurance agent, pattern maker, baker, sheet metal worker, merchant, dentist, chauffeur, foreman, mail carrier, laundryman, motor inspector, bookkeeper, and cobbler.

Among women joining cupid's ranks were 26 who said they were at home, domestic, dressmaker, nurse, housekeeper, clerk, organist, trimmer, milliner, finisher, industrial worker, seamstress, bookkeeper, stenographer and waitress.

Farm Sale Calendar

The complete calendar will be printed Monday.

Monday, February 16.
W. T. Culbertson and Martha Miller, on Clayton Miller farm, 1 1/2 miles west of school on North West Fifth street, Richmond, Ind.

Lewis Brothers, 2 1/2 miles northeast of Greensfork. General closing out farm sale at 10 o'clock.

Mark Laughlin, Feb. 12, 1/2 mile west and 1/2 mile north from Bentonville Monday, Feb. 16, 1920.

Walter Mustin, 1 mile south, 1 mile west and 1/2 mile south from Bentonville.

J. E. Muns and Joseph Kelly, at sale barn, College Corner, at 12 o'clock. Sale of horses and mules.

Tuesday, February 17.
Jones and Pike, Hawthorn Farm, at Centerville, Ind. Breeders' sale of 50 Big Type Poland bred sows and gilts; in pavilion. Cars met and lunch served.

S. H. Goble, 2 1/2 miles southwest of Eldorado, 6 miles east of New Paris, general sale, 10 o'clock.

F. A. Fletcher, 2 miles northwest of Arba, general sale at 10 o'clock.

S. H. Goble & Sons, 2 1/2 miles southwest of Eldorado, and 6 miles northeast of New Paris, at 10:30 o'clock.

Wednesday, February 18.
Frank A. Williams, Fairfield farm, 2 miles east of Williamsburg, on Fountain City road. Big Type Poland China Hogs, at 11 o'clock. Lunch served, trains met.

Thursday, February 19.
O. J. Oler, 3 miles southwest of New Madison, 7 miles northeast of New Paris, 4 miles northwest of Eldorado, general sale.

Sale by the administrator of the estate of Moses Henry, deceased, 1 1/2 miles south of Hagerstown. Farm and all personal goods.

Circuit Court News

Cora A. Moon was granted divorce and custody of one minor child, Alice, aged 5, from John A. Moon. The plaintiff based her charge on cruel and inhuman treatment and the evidence

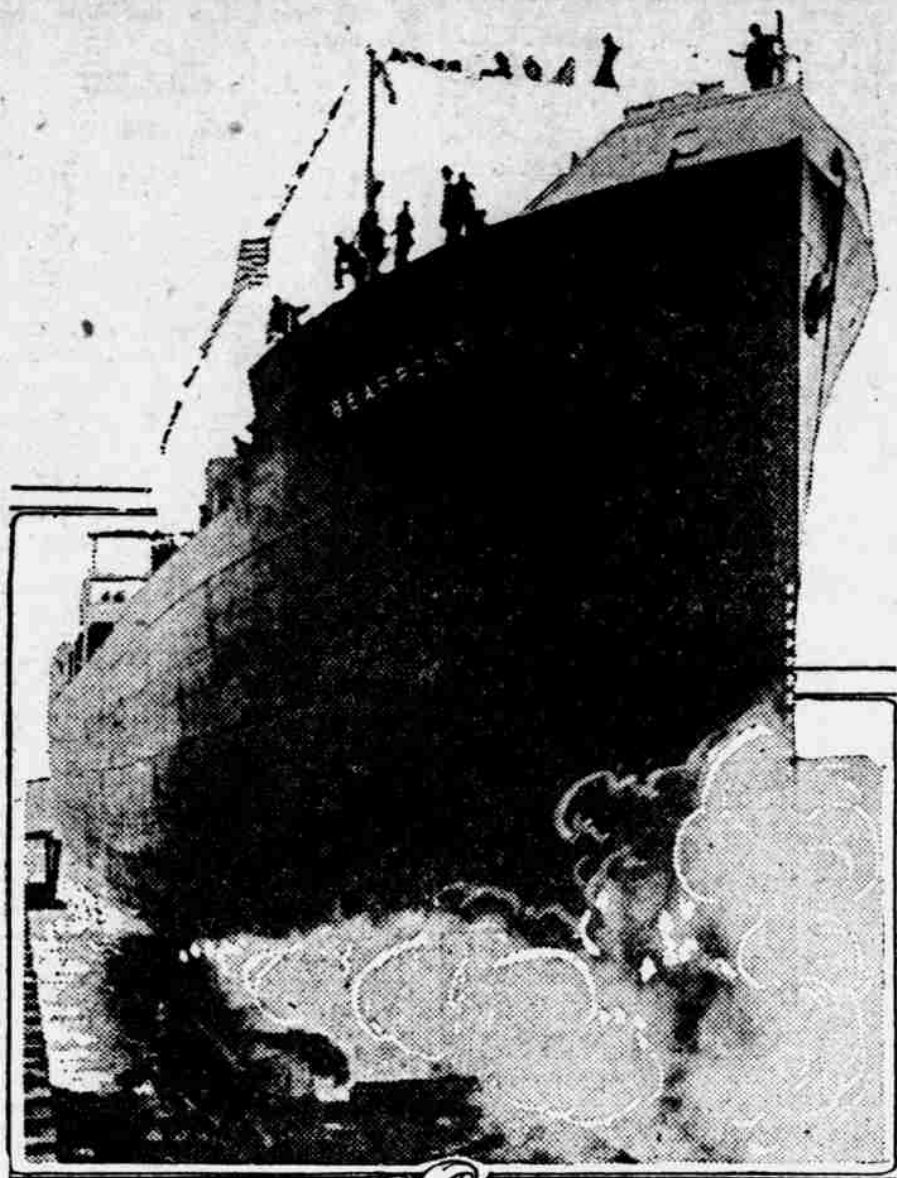


A SIMPLE APRON MODEL
Pattern 3122 was selected for this style. It is cut in 4 Sizes: Small, 32-34; Medium, 36-38; Large, 40-42; and Extra Large, 44-46 inches bust measure. Size Medium will require 3/4 yards of 36 inch material. One could develop this in white drill, linen or lawn, with tape binding in white or colors. It is good also for gingham, lawn, percale, chambray, sateen and alpaca.

A pattern of this illustration mailed to any address on receipt of 10c in silver or stamps.

Name
Address
City
Size
Name
Address Pattern Department, Palladium.

SHIP'S MAIDEN CARGO WILL BE \$1,000,000 WORTH OF FLOUR FOR STARVING ARMENIANS



Steamship Dearport sliding into water at Vancouver shipyard.

The 9,200-ton steel steamer Dearport was recently launched 95 per cent complete at Vancouver, Washington. The ship has been chartered by the Near East Relief Committee to carry, on its first voyage, a cargo of \$1,000,000 worth of flour, purchased on credits by the government of the new republic.

Introduced sustained her contention. Moon was ordered to pay \$6 a week for the support of the child until Oct. 1, 1921, and from then on \$10 per week.

John McDonald, defendant in the divorce suit of Agnes McDonald, was ordered to pay the plaintiff \$40 as

suit money with which to prosecute the case, on or before Feb. 21.

The court ruled against each and all of the defendants in the injunction suit of W. Bert Wilson and others, against the town of Cambridge City, its city officials, and Timothy J. Connel, sewer contractor, to answer on or before Feb. 25. This will cause the

defendants to file an answer to the complaint before that date.

MARRIAGE LICENSES
Albert M. Steinhilber, moulder, Richmond, to Edna P. Pipplin, seamstress, Richmond.

Earl P. Bunker, factory worker, Richmond, to Edith Menze, at home, Richmond.

REAL ESTATE TRANSFERS
Joseph T. Fennell to Ira J. Thompson, a part of the northeast corner section 21, township 18, range 14, \$4,375.

Harry Holderman, et al. to Harry C. Parsons, a part of the northeast quarter section 22, township 17, range 12, \$900.

Leona H. Haswell, et al. to Harry C. Parsons, et al. a part of the northeast quarter section 22, township 17, range 12, \$1.

George W. Salter to Thomas Doty, lot 3, Henry C. and Ida M. Starr's addition, \$1.

Colored Sabbath Schools To Hold Program Sunday

The Sunday schools of the local colored churches will give a special program at the Wesleyan church Sunday at 3 p. m.

Arrangements have been made for special music and addresses will be made by W. C. Conrad and W. H. Dennis.

AFTER INFLUENZA

The Grip, Fevers and Other Poisoning, Prostrating Diseases,

It is absolutely necessary that the blood be thoroughly cleansed, germs of disease destroyed or driven out, appetite restored and the kidneys and liver restored to perfect regular action.

Hood's Sarsaparilla has been before the people for 46 years as a general blood-purifying alterative tonic medicine and it has given perfect satisfaction. Men and women whose grandmothers gave them Hood's Sarsaparilla are now giving it to their own children and grand-children with perfect confidence. It is the ideal family medicine, for a wide range of ailments, always ready, always does good at any season of the year. Prepared by educated pharmacists. Nearly 50 years of phenomenal sales tell the story of its remarkable merit. For a mild, effective laxative, take Hood's Pills.—Advertisement.

Women Must Be Trained In Politics: Nonpartisan League Solution, Claim

(By Associated Press)

CHICAGO, Feb. 14.—Political education of women voters in a manner apart from partisan politics, today was the accepted and increasingly difficult, first duty for 1920 which the National American Woman Suffrage association holding its fifty-first and final convention here, intends to perform through the independent, non-partisan organization selected to supersede it.—The National League of Women Voters.

Whether the League of Women Voters would subscribe to the program proposed by the executive council of the suffrage association and approved by the more than 2,000 delegates attending the convention was the subject for discussion at a meeting of the league late today.

The program would hasten the association's "gradual move today dissolution" so that its absorption by the league would occur in time for the women to take a full part in the 1920 presidential campaign and election, leaders said.

DR. SCHURMAN RESIGNS AS HEAD OF CORNELL

(By Associated Press)

ITHACA, N. Y., Feb. 14.—Dr. Jacob Gould Schurman, president of Cornell University for nearly 28 years, tendered his resignation to the university's general administration committee at a meeting of that body today.

It is a letter to the board of trustees Dr. Schurman said he always had held the chief executive of a great institu-

tion should not retain the post more than 25 or 30 years. He added that tendering of his resignation—an act delayed because of the war and the postwar problems, the university faced, would set him free for other duties he much desired to attend to. He asked that his resignation become effective June 23, 1920.

Keep away from temptation.



New Arrival--

Dark Gray and Beaver Brown, covered Louis heel—

\$12.00

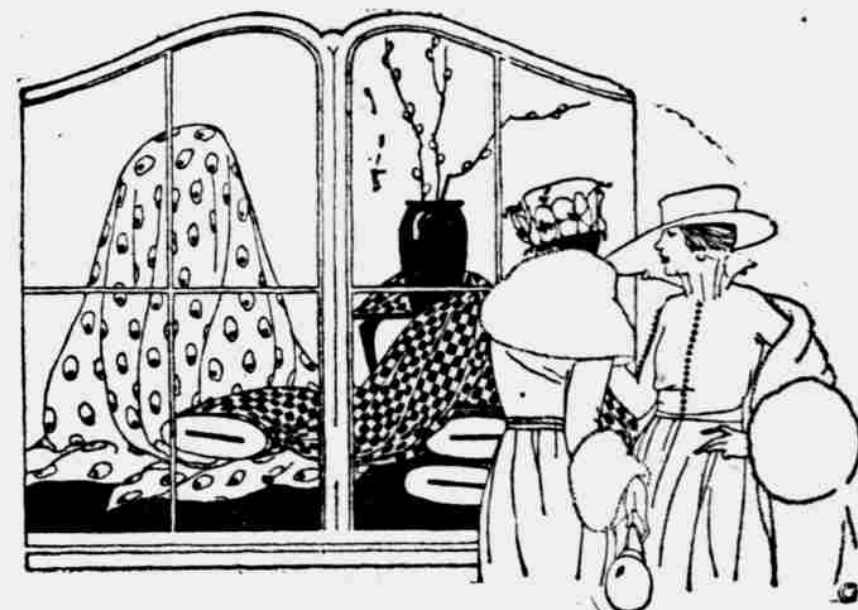
Teeple & Wessel

THE GEO. H. KNOLLENBERG CO.

Dress Goods and Silks

If you love beautiful things. You will be pleased when you see our new

Spring Dress Goods for 1920



A wealth of tasty and elegant patterns awaits your inspection, for in buying we have run the gamut of variety and she who finds not something that just "strikes" her, will be a woman extraordinary in every sense of the word. Here you will find—

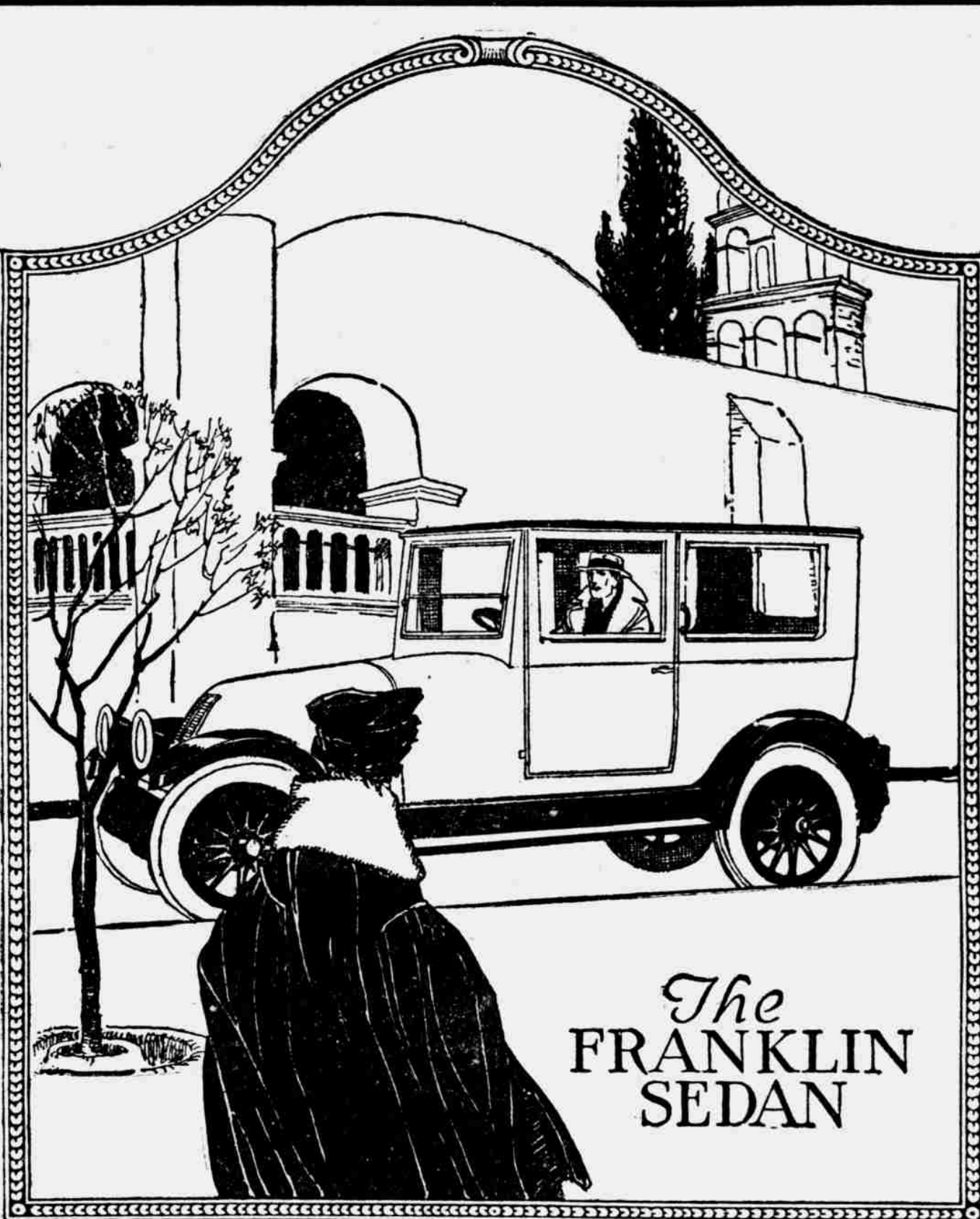
Beautiful Printed Morning Glory Silk.

Handsome Figured Foulards, Taffetas and Fan-Ta-Si.

Novelty Silk, Printed Georgette and Dress Satins.

Here, too, may be found the new Goldtone Coating, complete line of Tricotines, Check and Plaid Dress goods. It's a pleasure to show these goods, so stop in and let us show you through this wonderful collection.

The Geo. H. Knollenberg Co.
RICHMOND, INDIANA



The FRANKLIN SEDAN

The proof that people interested in fine cars are also interested in low upkeep costs, slower depreciation and greater comfort, is found in the turn from heavy, rigid cars to the light weight and flexible Franklin Sedan.

It has the most rapidly increasing sales of any fine car, not only because of what it gives in extra performance, but also on account of what it eliminates in the way of customary routine care and trouble.

20 miles to the gallon of gasoline
12,500 miles to the set of tires
50% slower yearly depreciation

J. B. Chapman

Local Distributor

Arrange for a demonstration with Geo. W. Worley 15-17 S. 9th St.



B. Thrifty Says

"The world is a school in which we should learn To lay-by a little of what we do earn; To bank with a bank that is solid and true, That pays a safe interest and looks out for you!"

Second National Bank

3% on Savings

Open Saturday Nights

Capital, Surplus, Undivided Profits Over \$600,000

© T. N. T. Co. 1919