

## Bethard Hopes To Sell Fords At Two Daily

If the Ford plants at Detroit can do their part, there will be something like 700 new Ford cars in Richmond and vicinity before the next twelve months rolls around. Ford's day policy of the Bethard agency has been supplanted by two-or-more-Fords-a-day and indications at the present are that the slogan will have to be expanded again in the near future.

Smith Form-A-Trucks are equally as prosperous. The new wrinkle in Ford trucks is proving more than popular with Wayne county merchants, manufacturers and shippers alike. Farmers too are appreciating the value of the Ford truck in farm work. Ford trucks on Wayne county farms are about as common as hay stacks these days.

## STATE COMMISSION ON TAXES MEETING

(By Associated Press)  
INDIANAPOLIS, March 31.—The executive committee of the Indiana Tax association met here this afternoon to discuss the desirability of holding the third annual state tax conference in the near future on account of the state constitutional convention next January. Tax problems probably will be prominent in the convention program. Indications before the meeting were that the majority of the committee would favor calling the state conference sometime in May.

As the warring kingdoms comprise 982,000,000 people, more than two-thirds of the inhabitants of the globe are concerned in the struggle.

A SERIOUS LOSS  
in loss of appetite.

### Meritol

ADAPTA  
TRADE MARK  
TONIC DIGESTIVE

sharpens your appetite, aids digestion, improves the health, and gives strength and vigor. Sold only by us, \$1.00. Thistlethwaite's Drug Stores, Richmond, Ind.

MEN!  
If you want the best  
**TIES**  
in this town see the new ones  
we have at  
**50c & 65c**  
See our window for the latest  
in Furnishings  
**Lichtenfels**  
1010 Main St. In the Westcott.

## Wright Says H.-D. Is Best

Friends of Earl J. Wright, agent for Harley-Davidson motor bikes, wonder why Wright, whose inventive genius is appreciated, don't make a motorcycle after his own mind.

Wright, who is an inventor of no mean ability solves this question when he says: A better motor bike than the Harley Davidson cannot be made. What's the use trying?

## GUARD AT PANAMA IS MADE STRONGER

(By Associated Press)  
WASHINGTON, Mar. 31.—Strengthening of the military forces in the Panama canal zone was ordered today by the war department and a board of officers, named to report upon organizing civilian employees in the canal zone for military defense purposes. The board will consist of Lieutenant-Colonel Chester Harding, governor of the zone, Commander Huteh I. Cone, marine superintendent of the canal and Major Oliver Edwards, of the general staff.

### PALLADIUM WANT ADS PAY

**CHILDREN WHO ARE SICKLY**  
Mothers who value their own comfort and the welfare of their children, should never be without a box of Mother Gray's Sweet Powders for Children, for use throughout the season. They Break up Colds, Relieve Feverishness, Constipation, Teething Disorders, Headache and Stomach Troubles. Used by Mothers for 30 years. THESE POWDERS NEVER FAIL. Sold by all Drug Stores. See Don't accept any substitute. Sample mailed FREE. Address, Mother Gray Co., Le Roy, N. Y.

**Dennis**  
TAILORED  
CLOTHES  
\$20 TO \$50  
8 North 10th St.

## MEDICINES, LIKE MEN HAVE CHARACTER

From their fine outward appearance, through the various elements of strength that go to make up the standing of a remedy, including the final and absolute test—does it "make good"?—does it cure?—Hood's Sarsaparilla and Pepton Pills conclusively prove every day that they are medicines of the highest character.

Hood's Sarsaparilla originated in a physician's successful prescription. Pepton Pills, named from pepsin and iron, include aux and other tonics. For aerofula, eczema, humors, boils, pimples and other eruptions—for loss of appetite, indigestion and dyspepsia—for kidney and liver troubles—for loss of appetite, that tired feeling—for brain-fag, nerve exhaustion, anemia and poor, thin blood—Hood's Sarsaparilla and Pepton Pills make the ideal course of medicine, the former before meals, the latter after.—Adv.

Stocks Grain  
**E. W. WAGNER  
& COMPANY**  
CHICAGO

MEMBERS  
New York Stock Exchange  
Chicago Board of Trade  
Minneapolis Chamber of Commerce  
St. Louis Merchants Exchange  
New York Produce Exchange  
Milwaukee Chamber of Commerce  
Chicago Stock Exchange

Cotton Provisions  
**F. G. SPRAGUE**  
Correspondent  
Phone 1720 Richmond, Ind.  
Room 4, Hittie Block.  
F. D. Alvord, Mgr.

The kind you'll like  
A BIG  
**X**  
BIKE  
**ELMER S. SMITH**  
"The Wheel Man"  
426 MAIN STREET. PHONE 1806

Pay Only  
Two Bits  
a Day

# Leaders In The Commercial Field

The commercial motor driven vehicle is more essential to modern life than the pleasure automobile. A motor driven vehicle is now an almost absolute necessity to the manufacturer, the Wholesaler, the Jobber, and the merchant. We have established a Commercial Service Station in charge of an experienced mechanic and have secured the agency for the pre-eminent leaders in the Commercial field. Nothing but trucks, truck attachments, delivery cars and commercial accessories will be found here. All the best in their respective classes.

## Republic Motor Trucks

### "The Honest Truck At An Honest Price"

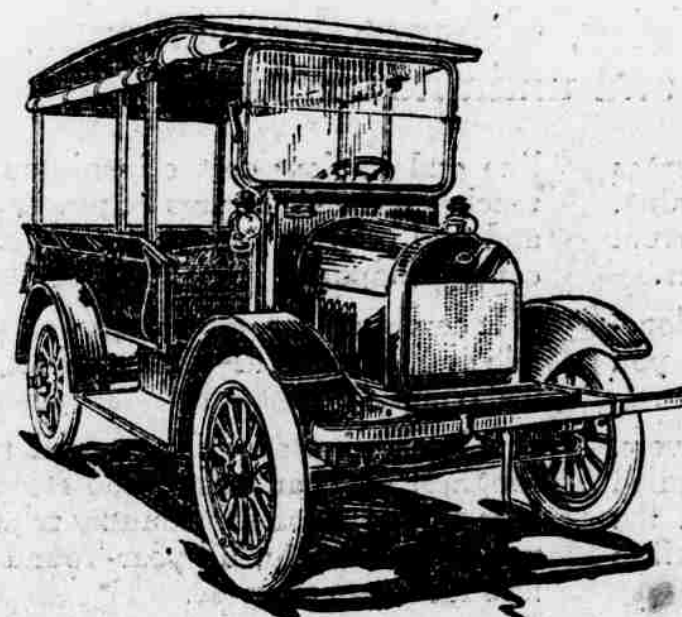
Built in the largest exclusive truck factory in the world. The product of 15 years' experience in building motor vehicles. Beyond comparison by any other truck anywhere near it in price.

### 5 Models to Meet All Needs

Republic Dispatch, 1500 lbs.	\$ 750
Republic, Model 10, 2000 lbs.	\$1095
Republic, Model 11, 3,000 lbs.	\$1375
Republic, Model A, 4000 lbs.	\$1785
Republic Dreadnaught, 6000 lbs.	\$2675

## Vim Delivery Trucks

You want a delivery auto. Your pleasure vehicle will be too light and your truck too heavy. The solution is the Vim delivery. Can be bought on payments of \$1.50 a day. Built strong and attractive. Maximum capacity 1,000 pounds.



VIM CAB TOP EXPRESS, MODEL H—\$695

### 12 MODELS

Closed Panel Body with wire door and tail gate—Model B	\$735
Salesman's Express—Model E	\$775
Undertaker's Body—Model W	\$875
Fire Apparatus—Model R	\$1385
Passenger Bus—Model J	\$975
Taxicab—Model T	\$1365
Cab Top Express—Model H	\$695
Fore Door Panel Body—Model A	\$755
U. S. Mail Wagon—Model M	\$785
Closed Cab, Panel Body, Model G	\$795
Open Express—Model F	\$695
Standard Closed Panel Body—Model D	\$725

Before Buying a Truck or Delivery Car, Consult with Richmond's Only Exclusive Truck Agency, with a complete service station.

## Weldex Mfg. Co.

R. H. Fetta, Mgr.

12th and N. E St.

Phone 1494

## Willard BATTERY SERVICE STATION

(Copyright registered, 1917)

### Working for A Million Car Owners

Are you letting Willard work for you?  
Car owners everywhere are getting the habit of making their regular monthly trip to the Willard Service Station the most important item in the care of their battery.

Willard Service is not ordinary battery service. It is factory trained experts co-operating with you to keep your battery on the job.

And if you join the army of car owners for whom Willard works you will know that this pays big returns in bright lights, quick starting, faultless ignition, as well as in dollars and cents.

We're your Willard Service Station. We have the equipment to give you the best battery service, and we're backed by the Willard Organization.

We have a rental battery for your use if yours needs repairs.



**Richmond Electric  
Company**  
1105-1107 MAIN STREET PHONE 2826