

# News of the Churches

## Baptist.

**First Baptist**—North Eleventh, near Main street, W. O. Stovall, Pastor; J. W. Ferguson, Superintendent. Worship with preaching by the pastor. Subjects: 10:40 a. m., "The Life that is in the Light"; 7:30 p. m., "Powerful Truth and Foolish Preaching." Sunday school at 9:15 a. m. Young People's meeting at 6:30 p. m.

## Bible Students.

**Associated Bible Students**—K. of P. Temple, South 8th street, near Main; 10:00 a. m. Bible study, subject "Israel's seventieth week a figure of the close of the Gospel Favor."—Dan. 9: 24-27. At 11:30 Praise and testimony service. Public is cordially invited. W. A. Buhl, Elder.

## Brethren.

**United Brethren**, Eleventh and North B streets. H. S. James, pastor. Bible school at 9:20 a. m. Will Davies, superintendent. Preaching at 10:30 a. m. and 7:30 p. m. by the pastor. C. E. meets at 6:30 p. m. Rally day, October 10.

## Catholic.

**St. Mary's Catholic**—Rev. Walter J. Cronin, rector; Rev. Aloysius B. Duffy, masses at 6:00, 8:00 and 10:00 o'clock Sunday. Instruction at 2:30 o'clock. Vespers and benediction at 3:00. Holy hour, Wednesday, at 7:30. **St. Andrew's Catholic**—South Fifth and C streets, Rev. Frank A. Roell, rector; Rev. Clement Zepf, assistant. Low mass and communion at 5:30 a. m. Mass, with singing by children and five minute sermon at 7:30 a. m. High mass and sermon at 10 a. m. Vespers, sermon and benediction at 3:00 p. m.

## Christian.

**First Christian**, South Tenth and A streets, L. E. Murray, pastor. Sunday school 9:15 a. m. Rally Day. Morning worship with communion, 10:30. Sermon theme: "The Empty Pew." Evangelistic service at 7:30 p. m., subject of sermon: "The Lost Soul." Special music. Board meeting Monday 7:30 p. m. Bible study Thursday 7:30 p. m. See outline in this paper.

**Central Christian Church**—Rev. Thos. Adams, Pastor. Bible school at 9:05, Roy Babylon, Superintendent. Preaching and communion at 10:30; the morning topic, "Enthusiasm," and the one for the evening, "Christianity's Four Dimensions." Christian Endeavor at 6:30; prayer meeting Thursday night. Choir meeting Friday night.

## Episcopal.

**St. Paul's Episcopal Church**—Morning service at 10:30.

## Friends.

**East Main Street Friends Church**—Main street, between 15th and 16th streets, Milo S. Hinkle, Pastor. Bible School, 9:30 a. m., Percy B. Smith, Superintendent. Meeting for worship, 10:30 a. m. Christian Endeavor, 6:30 p. m., topic, "The Consecration of School Life," leaders, Alice Newman and Mary Jay. Evening meeting for worship, 7:30 p. m. Mid-week prayer meeting, Thursday, 7:30 p. m. Choir practice, Friday, 7:30 p. m. Everybody is cordially invited.

**Whitewater Friends**—North Tenth and G streets, Pastor, O. E. Chance; Superintendent, George Graham. Bible school, 9:00 a. m.; Worship, 10:30 a. m., subject, "Growing Up to God's Program." Bible study class at 2:00 p. m. Junior meeting at 3:00 p. m. Christian Endeavor meeting at 6:20 p. m. Evening services at 7:30, subject, "The Twentieth Century Wash Basin." Ladies Aid Tuesday afternoon. Prayer meeting Thursday evening at 7:30.

**South Eighth Street Friends**, Francis C. Anscombe, pastor. Bible school 9:10, John H. Johnson, superintendent. Meeting for worship 10:30. Sermon by the pastor. The first meeting of the season of the Ladies Aid society will occur on Tuesday at 1:30. All members are asked to be present. Prayer meeting Thursday, 7:30.

## Lutheran.

**First English Lutheran Church**, Rally Day services in the Sunday school at 9:00 a. m. Let no member of either church or Sunday school miss this service for it is to be a joint service of both Sunday school and church. The new pastor, Rev. F. A. Dressel, will be there to greet his new congregation, occupying the pulpit during the devotional services and to deliver an address. No church service at 10:30. Evening services will be resumed tomorrow at 7:30. Annual congregational meeting Wednesday evening, October 4.

**St. John's Lutheran**—South Seventh and E streets, Rev. A. J. Feeger; Sunday school, 9 a. m.; German sermon, 10 a. m.

**Second English Lutheran**—North West and Pearl streets, C. Raymond Isley, Pastor. Sunday school, 9:00 a. m., J. F. Holaday, Superintendent. Morning worship, 10:30 a. m., and evening worship, 7:30 p. m., with sermons by the Pastor. Week-day prayer service and Bible study, Thursday, at 7:30 p. m. A cordial welcome to all. **St. Paul's Lutheran Church**—333 South Seventh street—Dr. F. W. Rohlfing, pastor. Sunday school at 9:00 o'clock. George Bartel, superintendent. This will be our Rally Day and an interesting program has been prepared by the committee. The leading address will be delivered by Judge Edward Jackson, of Indianapolis. Both the morning and the evening services will have for its topic the question: "How do we get to Heaven?" and "Is the European conflict a travesty on the Christian religion?" will be the theme for the evening sermon. The funeral of Mr. Behring will be held from the church at 2:00 o'clock in the afternoon. The pastor will preach briefly in both German and English. Teachers' meeting is Wednesday night. Catechism classes at 8:30, 9:30 and 10:30 on Saturday morning. All are welcome. **Trinity English Lutheran**, corner Seventh and South A, Oscar T. F. Tressel, pastor. 9:00 Sunday school, Charles Igelman, superintendent. Rally Day with appropriate exercises in song and recitation. 10:30, Harvest home and mission festival, Theme: "What

Meat Do You Labor For?" 7:00, Festival continued, theme: "She Hath Done What She Could." Monday evening, Junior Luther League with Ezra and Ruth Weidner, 301 South Third. Wednesday evening, Bible study and teacher training class. Thursday afternoon, Ladies society with Mrs. Henry Tubbsing, South West Fifth street.

## Methodist.

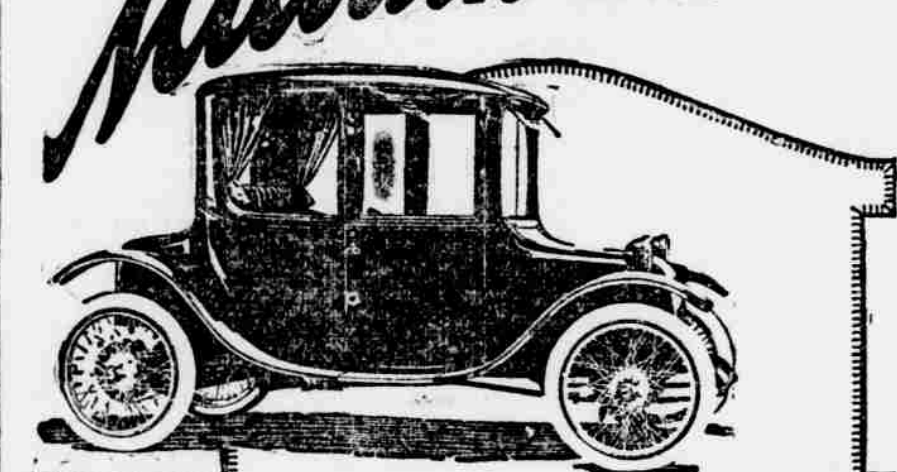
**First Methodist Episcopal Church**—Corner, Main and Fourteenth streets, Harry Curtin Harman, Minister. Sunday school at 9:15 a. m., Delmont S. Brown, Superintendent. This is "Rally Day" in the Sunday School and a very interesting program is prepared. This is also "Missionary Day" in the School and the offering for both Rally Day and for Missions will be received. Brotherhood Bible Study Class at 9:15 a. m. Public worship and sermon by the Minister at 10:30 a. m., subject of sermon, "The Sunday School as a Factor in the Building of Character." Class meeting at 11:45 a. m. Epworth League devotional service at 6:30 p. m., topic, "How Money Spending Reveals Character." Leader, Mr. Maurice Woodhurst. Public worship and sermon by the Pastor at 7:30; subject of sermon, "What I Owe the Sunday School."

**Grace Methodist Episcopal Church**—Corner North Tenth and North A streets, Ulysses S. A. Bridges, Minister. Sunday school at 9:15, C. H. Kramer, Superintendent. Morning worship at 10:30, subject, "The Measure of Divine Help." Class meeting at 11:45, Epworth League at 6:30; Evening worship at 7:30, subject "Transferring Power of the Gospel." **Fairview Methodist Episcopal**—Charles and Hunt streets; J. P. Chamness, pastor. Sunday school 9:15 a. m.; Chas. Gibbs, supt.; Mrs. Claude Hart, assistant supt. Public worship 10:30. Junior league, 2:30 p. m.; Mrs. J. P. Chamness, supt. Evening service 7:30. Prof. F. Arlington Smith of Dayton, Ky., will be present at morning and evening service and sing. Prof. Smith has a wide reputation as a soloist. Come and hear him.

**KOLPSCHOOL OF DANCING**  
PREPARE FOR THE WINTER.  
Special Rates for Private Lessons during September.  
Beginner's Class  
Friday Evening, Oct. 6th  
In I. O. O. F. hall.  
326 North 10th St.  
PHONE 2347.

Ask for and Get  
**SKINNER'S**  
THE HIGHEST QUALITY  
**SPAGHETTI**  
36 Page Recipe Book Free  
SKINNER MFG. CO., OMAHA, U.S.A.  
LARGEST MACARONI FACTORY IN AMERICA

**Milburn** Light Electric



**The Talk of the Town**  
The success of the new Milburn Brougham was instantaneous. It compelled recognition everywhere.  
That National Board of Censors—public opinion—approved of the Milburn from the start, and today it stands forth as the crowning achievement in electric car building.  
No other electric car gives you so much for so little money—\$1685.  
Comfort, beauty, style and grace, combined with an abundance of power and mileage, are the basic reasons of the Milburn's sweeping success.  
RICHMOND ELECTRIC CO.,  
19 S. 7th St. H. R. Marlatt, Salesman  
The Milburn Wagon Company  
Established 1848 Toledo, Ohio  
Automobile Division



**A Discovery about your TEETH**  
Tonight, if you will closely examine your teeth after brushing them, you will make a surprising discovery. Though you have been cleaning your teeth regularly, you will find an accumulation of tartar on the enamel and bits of food deposit hiding between the crevices. Your dentifrice has not been REALLY CLEANING!  
Loss of teeth is usually due to one of two conditions—Pyorrhea or Decay—both of which ordinarily develop only in the mouth where germ-laden tartar is present.  
CLEAN your teeth—REALLY CLEAN them! Senreco, a dental specialist's formula will do it. Senreco embodies specially prepared, soluble granules unusually effective in cleaning away food deposits. Moreover, it is particularly destructive to the germ of Pyorrhea.  
Go to your dealer today and get a tube of Senreco—keep your teeth REALLY CLEAN and protect your self against Pyorrhea and decay. Send 4c to Senreco 304 Walnut St., Cincinnati, Ohio, for trial package.  
"PREPAREDNESS"  
See your dentist twice yearly  
Use Senreco twice daily  
The tooth paste that REALLY CLEANS  
**Senreco**  
Reg. U. S. Pat. Off.

ing at 6:30. Mid-week services Thursday evening at 7:30.

## Scientist.

**First Church of Christ, Scientist**—North A, between 14th and 15th streets. Subject, "Unreality." Sunday school at 9:00 a. m. Services at 10:30 a. m. Wednesday evening testimony meetings at 7:45. Public cor-

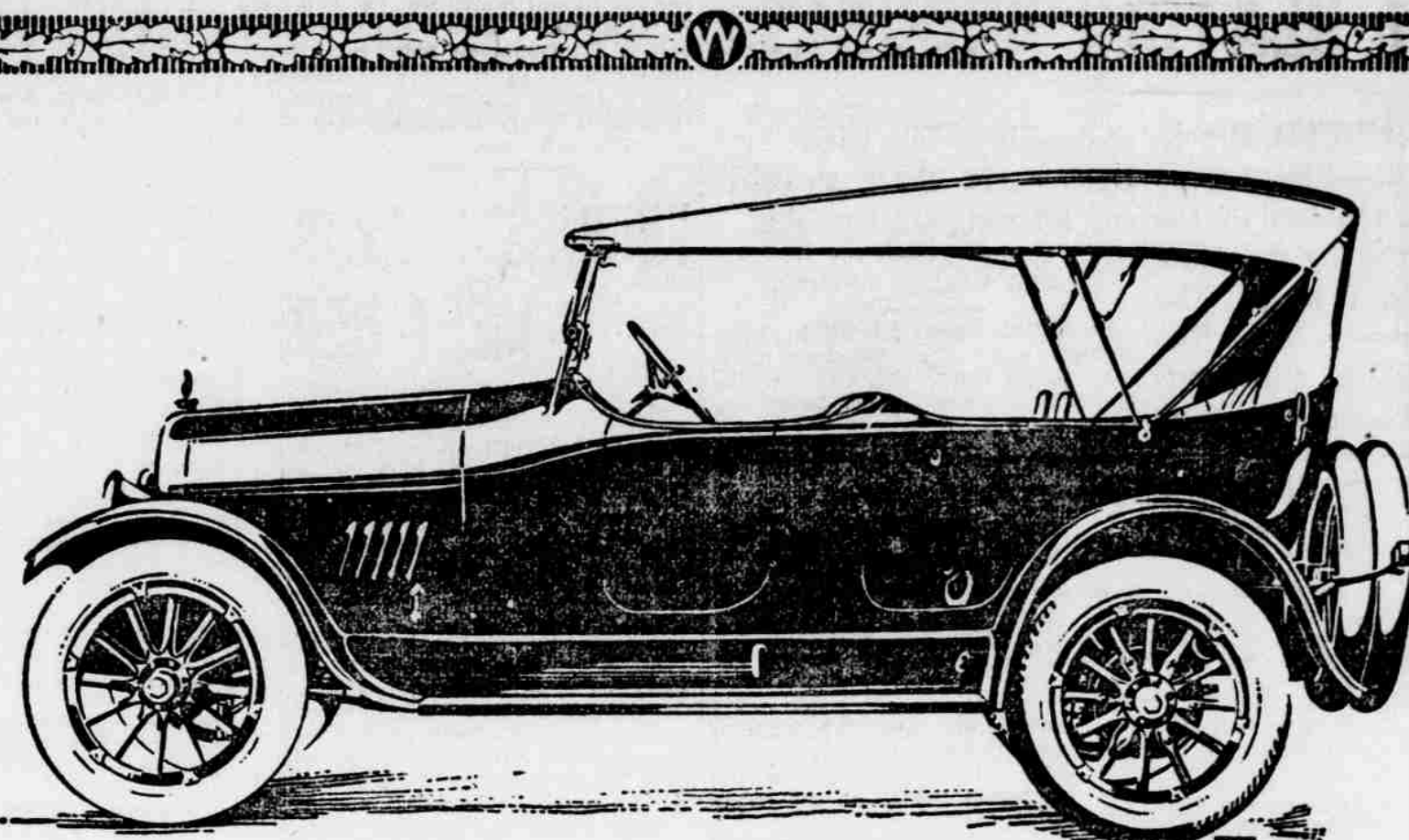
dially invited. Reading Room located in south end of church edifice, open daily except Sundays and legal holidays from 1 to 5 p. m.

## Union Mission.

**City Mission**—North Fourteenth St. Bible School, 9:30. Morning worship, 10:30, Mrs. J. F. Probst in charge. Christian Endeavor, 2:30 p. m., a spe-

cial service and splendid address will be given for school boys and girls. Come. Evangelistic service, 7:30 p. m. Prayer meeting Tuesday evening at 7:30. Bible Training class, 7:00 Wednesday evening. Friday evening, 7:30 o'clock a special prayer meeting will be held at the Mission. A special invitation is extended to all the churches to attend this meeting.

**BELL-ANS**  
Absolutely Removes  
Indigestion. One package  
proves it. 25c at all druggists.



**THE NEW Westcott SIX HAS ARRIVED**

One Chassis Six Bodies \$1590-\$1690

**NEVER BEFORE** has there been a line of motor cars of the light-weight tendency that could be compared with the new Westcotts. This sweeping statement is made without reservation. From tip of radiator to the tire carriers, the Westcott is characterized by originality approaching to boldness in conception, but every line and every curve is held in reserve by an exquisite sense of proportion and good taste.

Closer inspection only adds to the delight of first impressions. The upholstery is all of long grain leather held in place by invisible fasteners. The leg room seems to indicate that the designer was well over six feet tall; yet the adjustable pedals on clutch and brake can be set to bring the foot control within the reach of the tiniest woman. And what a roomy aisle between the two front seats! No trouble at all to pass from front to rear without disturbing the driver or slowing down the car.

**THE REAR COMPARTMENT** is a delight! Such generous space! Disappearing auxiliary seats that really disappear. Tonneau lights in the rear of the front seats. Robe rails and foot rails and deep, luxurious cushions that invite one to relax and ride, blissfully free from all suggestion of motoring fatigue.

**LOOKING FORWARD** the eye rests on the solid mahogany instrument board—a thing of beauty in itself. There are big compartments for gloves and personal effects. All instruments are fastened from beneath, leaving no screws or other attachments to mar the beauty of the board. On the steering wheel all metal parts are of aluminum. The wind-shield is a work of art.

But splendid as are the proportions of this car,—beautiful as are its body appointments,—it is the chassis that places the new Westcott in a class unique.

**THE WHEEL BASE** is 125 INCHES,—the length which gives most complete riding comfort coupled with greatest ease of driving and turning. The frame is of extra duty pressed steel in U-beam construction,—tremendously strong for its weight. Every leaf of every spring is of chrome vanadium steel, practically unbreakable but luxuriously resilient. The axles are the most approved Timken construction with Timken bearings. Firestone Demountable Rims with over-size tires on all four wheels.

**THE DELCO TWO-UNIT SYSTEM** assures absolute efficiency and freedom from troubles with the starting, lighting and ignition. And a magnificent six cylinder continental motor, cast in bloc, 3½ bore x 5½ stroke, delivers a stream of consecutive power impulses that are practically free from vibration, with never a knock between speeds from one mile upward to as fast as you will ever dare to drive.

**A CENTRIFUGAL PUMP AND FAN**, with thermostatic control, keep the water circulating through the

cellular radiator so that the motor runs at the same temperature in January as in July. The radiator shell is removable.

**THE RAYFIELD CARBURETOR** is of an improved type and it is bolted direct to the cylinder block without manifold. One simple regulator operated from the driver's seat makes all carburetor adjustments.

**LUBRICATION** is kept at constant level by a combination of force feed and splash. The crank case is a solid aluminum casting, saving two-thirds in weight as compared to cast iron.

**THE CLUTCH** is Brown-Lipe dry plate multiple disc of a brand new type. Three speeds forward and one reverse are provided by the Brown-Lipe Transmission system, with its sliding gear, selective type, and gears of nickel steel. The bearings on main shaft are Timken. And the breather pipe on the transmission housing provides ample allowance for the expansion of the lubricant and prevents leakage of grease.

**THE DRIVE** is transmitted through a tubular shaft with torque arm and two Spicer Universal Joints. No torque strains on the rear springs even in the hardest driving and braking.

**TIMKEN SERVICE AND EMERGENCY BRAKES** are of ample dimensions and are provided with equalizers.

**A GEMMER SEMI-REVERSIBLE WORM AND WHEEL STEERING GEAR** holds the car to the road with plenty of allowance for sudden obstructions,—another element of safety that experienced drivers will appreciate.

With a tank that holds 19 gallons of gasoline and the Stewart Vacuum System of largest size, the fuel supply is practically perfect. There is also storage capacity for 1½ gallons of oil.

Such, in brief, is the new Westcott Motor Car,—a creation of incomparable efficiency, beauty and endurance. The specifications which the factory sent us in advance convinced us beyond doubt or question that this would be the greatest value ever offered to the buyer who is "motor wise." The stock cars exceed even our most optimistic anticipations.

And yet this car is not a "millionaire's car." In price it compares favorably with most of the popular cars of the day. \$1,590 for the Roadster or the Five Passenger Touring Car. Only one hundred dollars additional for the Seven Passenger Touring Car. The closed bodies will be in proportion.

You must see this car. You must judge it in cold-blooded comparison with other cars, without reference to price. You must ride in it and drive in it and put it to every test that you can think of. Call us up for an appointment or visit our showrooms.

## Standard Equipment

**THE** storage batteries are Willard. (120 ampere hour.) The new Westcotts are delivered to the buyer completely equipped for the road. Pantasote one-man top with Jiffy Curtains. Cowl-fitting double ventilating, rain-proof wind-shield; Shroud Lamps; Oil Pressure Gauge; Warner Speedometer; Warner Electric Clock; Boyce Motometer; large Klaxon with push button in center of steering post; flush Tonneau Lamps; engine-driven Tire Pump; robe rails; foot rail; license holders; spare tire saddle; foot accelerator; Gasoline Gauge and complete tool kit with jack and repair outfit.

**STEVE WORLEY**

620 Pearl Street

RICHMOND, IND

Phone 4778

