

Are You Going to Church?

Baptist.

First Baptist—North Eleventh, near Main street, W. O. Stovall, pastor; J. Will Ferguson, superintendent; worship with preaching by the pastor, 10:40 a. m., subject, "The Christ Passion"; Sunday school, 9:15 a. m.; Young People's meeting, 6:30 p. m.; there will be no evening service of worship.

Catholic.

St. Mary's Catholic—Rev. Walter J. Cronin, rector; Rev. Aloysius B. Duffy, masses at 5, 7 and 9 o'clock, Sunday. Benediction after the last mass. Mass during the week at 6:30 and 8 o'clock.

St. Andrew's Catholic—South Fifth and C streets, Rev. Francis A. Roell, rector; Rev. Clement Zepf, assistant. Low mass and communion at 5:30 a. m. Mass, with singing by children and five minute sermon at 7:30 a. m. High mass and sermon at 10 a. m. Vespers, sermon and benediction at 3:00 p. m. Holy hour at 7:30 p. m.

Christian.

First Christian—South Tenth and A streets, L. E. Murray, pastor. Sunday school at 9:15; morning worship with communion at 10:30; sermon theme, "The Rewards of Faithfulness," evening service at 7:30; the sermon will deal with present industrial conditions in observance of Labor Sunday. A special invitation is extended

to laboring men and labor unions. Miss Ruth Harris will sing at the morning service, and the ladies' quartet at night. The regular monthly meeting of the official board will be postponed one week on account of Labor day.

Central Christian—Thomas Adams, pastor. Bible school at 9:05. Roy Babylon, superintendent. Preaching and communion at 10:30. The morning subject, "Swatting the Fly," and the topic for the evening at 7:30, "Why Some Folks Go to Sleep in Church." "Christian Endeavor at 6:30; prayer meeting Thursday night, led by the pastor; choir meeting Friday night.

Friends

East Main Street Friends—Main street between Fifteenth and Sixteenth streets, Milo S. Hinckle, pastor; prayer meeting in the library at 9:00 a. m.; Sunday school, 9:30; Percy B. Smith, superintendent; meeting for worship, 10:30; no evening services; mid-week prayer meeting, Thursday, 7:30 p. m.; everybody welcome.

West Richmond Friends—Charles E. Tebbets, acting pastor; Bible school, E. Harrison Scott, superintendent; morning worship, 10:30 a. m., theme, "Five Great Words"; Endeavor society, 2:15 p. m.; no vesper service this week; prayer meeting, Thursday 7:30 p. m.

South Eighth Street Friends—Pas-

tor, Francis C. Anscombe. Bible school, 9:10. John H. Johnson, superintendent. Meeting for worship, 10:30. Sermon by the pastor. Mrs. F. J. Bartel will sing. Prayer meeting on Thursday, 7:30 p. m.

Lutheran.

Second English Lutheran—North-west Third and Pearl streets, C. Raymond Isley, pastor; Sunday school, 9:00 a. m., W. E. Kiopp, superintendent; morning worship, 10:30 a. m., sermon by the pastor on the theme, "Industrial Peace," a discussion of labor conditions in the light of scripture; no evening service; the Women's Home and Foreign Missionary society, will meet Friday afternoon at the home of Mrs. H. P. Harvey, on Southwest Third street.

First English Lutheran—Sunday school at 9 a. m., E. B. Knollenberg, supt. Every member of the school and congregation is urged to attend this service. As a special number of the program, Mr. Ernest Renk will sing "He Loves Even Me." No church service.

St. John's Lutheran—South Seventh and E streets, Rev. A. J. Feeger; Sunday school, 9 a. m.; German sermon, 10 a. m.

Trinity English Lutheran—Corner Seventh and South A, Oscar T. F. Tressel, pastor; Sunday school, 9:00, Charles Igelman, superintendent; Divine service, 10:30, theme, "To Whom

Little is Forgiven, the Same Loveth Little"; no evening service; teacher's conference, Wednesday evening; Ladies' Society, Thursday afternoon with Mrs. Menke, 30 North Third; Junior Luther League, Friday evening with Miss Ruth Wickemeyer, 534 South Ninth street.

Methodist.

Fairview Methodist Episcopal—Charles and Hunt streets, J. P. Chamness, pastor; Sunday school, 9:15 a. m., Charles Gibbs, superintendent; Mrs. Claude Hart, assistant; Class meeting, 10:30 a. m., Brother George Quigley, leader; preaching, 7:30 in the evening; mid-week prayer meeting, Thursday evening 7:30; Ladies' Aid, Wednesday 2:30 at Mrs. Louisa Baily, Ridge street.

First Methodist Episcopal—Corner Main and Fourteenth streets, Harry Curtin Harman, minister. Sunday school at 9:15, Delmont S. Brown, superintendent. This is Missionary day in the Sunday school, and the offering for mission will be received. Brotherhood Bible study class at 9:15; a short address by the Rev. Dr. Lichten, who will speak concerning the "Men's Work" in the church of which he is pastor. Public worship and sermon by the minister at 10:30. No night service.

Presbyterian.

Reid Memorial United Presbyterian—Corner Eleventh and North A Sts.;

Sabbath School at 9:15 a. m.; preaching at 10:30 by the pastor, Rev. James S. Hill; Young Peoples Christian Union at 6:30 p. m.; no evening service.

First Presbyterian—Sunday school, 9:15, W. O. Wissler, superintendent; morning worship, 10:30, sermon by Rev. H. T. Graham, of Franklin, Ind.

Scientist.

First Church of Christ, Scientist—North A, between Fourteenth and Fifteenth streets; subject, "Man"; Sunday school at 9 a. m.; services at 10:30 a. m.; Wednesday evening, testimony meetings at 7:45; public cordially invited; reading room, located in south end of church edifice, open daily except Sundays and legal holidays from 1 to 5 p. m.

RECRUITING OFFICER WILL USE MOVIES

INDIANAPOLIS, Ind., Sept. 1.—The movies will be used by the recruiting parties now trying to secure 3,500 men in the state for the Indiana National Guard on the Texas border. But ten recruits have been received since the recruiting parties brought back from Texas opened a station a week ago.

Adjutant General Bridges today ordered a vigorous publicity campaign to be carried on. Battery D, the new Fort Wayne battery, which will replace the Purdue university in Texas, was in camp at Fort Harrison today. The men will be mustered into federal service in a few days.

LA FOLLETTE RUSHES BACK TO WASHINGTON

WASHINGTON, Sept. 2.—Senator LaFollette of Wisconsin, after a rush trip from his home, reached Washington at noon today. He hurried direct from the station to the senate interstate commerce committee meeting prepared to take an active part on the fight on the president's railroad program. His arrival was entirely unexpected.

C. C. CLARK FAMILY RETURNS FROM WEST

LYNN, Ind. Sept. 2.—Mr. and Mrs. C. C. Clark and children who have been making an extensive trip through the West, returned Monday evening after an absence of a couple months. James Bascom and family have returned from a pleasant outing at Crooked Lake. Sater Horn left Tuesday night for Traverse City, Mich.

Visits Relatives
Mr. and Mrs. J. W. Carter, accompanied by Mrs. Oren of Farmland, are spending a few days with relatives at Greenfield. Miss Emily Martin underwent an operation for appendicitis Monday afternoon. Miss Anna Nye and Mrs. Ezra Nye left Friday for Houghton, Michigan.

D. A. GROVE ELECTED TO DISTRICT OFFICE

OXFORD, Ohio, Sept. 2.—The residents of the school boards of Oxford, Hanover, Milford and Rely townships, and the four special school districts therein, met last night and elected David A. Grove, Principal of the Oxford public schools, to succeed Walter S. Guiler as District Superintendent, at a salary of \$1,600 a year.

Grove at once tendered his resignation to the village school board, and C. B. Hindle, Superintendent of the Dunkirk, (O.) schools, was elected principal of the Oxford schools at a salary of \$1,200 a year. Hindle is a graduate of Ohio Northern University, Ada, Ohio.

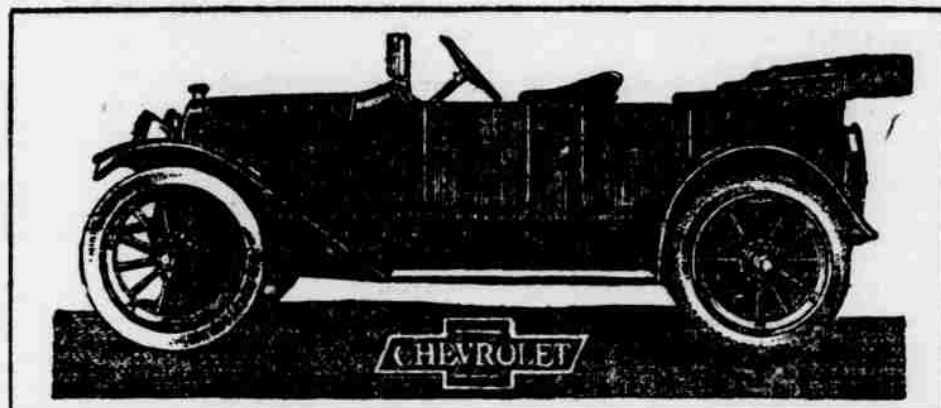
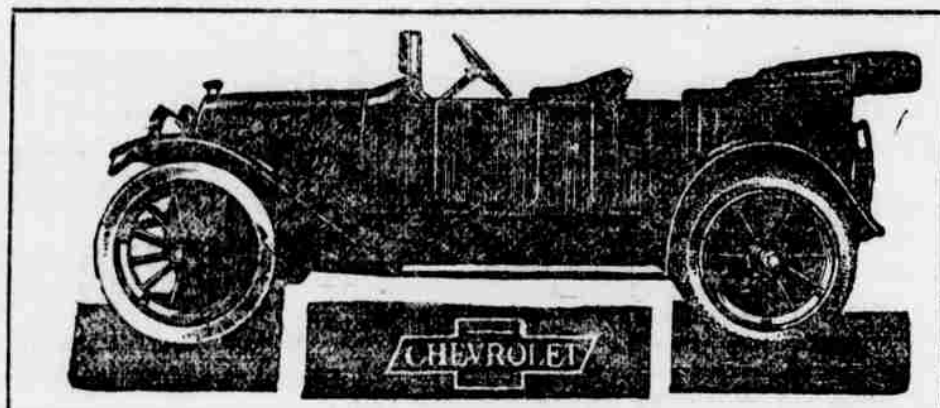
Farmers living east of here in Oxford and Milford townships report an alarming increase in hog cholera. The disease is said to be spreading rapidly, and scores of swine are dying daily.

Ask for and Get
SKINNER'S
THE HIGHEST QUALITY
SPAGHETTI
36 Page Recipe Book Free
SKINNER MFG. CO., OMAHA, U.S.A.
LARGEST MACARONI FACTORY IN AMERICA

Chevrolet Reduced

\$490

Including Electric Lights and Starter
Was \$550



Lowest Priced Electrically Equipped Automobile Built

This great reduction is the tangible result of an unequalled combination of manufacturing knowledge, merchandising ability, experience and financial strength. Nothing has been sacrificed to make this unheard of price.

SPECIFICATIONS—"FOUR-NINETY"

MOTOR—Four cylinder, four cycle, over-head valve type, 3 11-16 in. bore by 4 inch stroke.

CYLINDERS—Cast en bloc with upper half of crank case. Head detachable. VALVES—1½ inch diameter.

CONNECTING RODS—Steel forging; bearings 1½ in. long by 1½ in. diameter, die cast babbit.

CRANK SHAFT—Steel forging, three plain bearings; front, 2 5-16 in. long by 1½ in. diameter; center 1½ in. long by 1 21-32 in. diameter; rear, 2 11-16 in. long by 1½ in. diameter, die cast babbit bearings; center bearings bronze reinforced with babbit lining.

CAM SHAFT—Steel forging, cams are made integral; three plain bearings; front, 2½ in. long by 1 5-16 in. diameter; center 1½ in. long by 1 9-32 in. diameter; rear, 1 7-16 in. long by 1½ in. diameter.

TIMING GEARS—Helical type gear. Enclosed in dust-proof case in front of the motor and run in oil, insuring quietness and long life.

LUBRICATION—Self contained, constant level, splash system with distributing pipes enclosed within crank case; oil circulated by positive plunger pump, operated by cam shaft. Individual oil pocket for each connecting rod dipper.

CARBURETOR—Improved double jet type. Gasoline is supplied by gravity. **IGNITION**—Connecticut Automatic System with storage battery; distributor in connection with Auto-Lite Electric Generator.

COOLING—Thermo-siphon system, cellular radiator of large capacity with excess circulation in connection with belt driven fan and ventilated hood.

CLUTCH—Large pressed steel cone and provides its own spring action to prevent harsh action, faced with leather.

TRANSMISSION—Sliding gear, selective type, three speeds forward and one reverse. Run on annular ball bearings, countershaft on plain phosphor bronze bushings. Gears and shafts of 3½% nickel steel, heat treated in oil. Gears have ¾ in. face, 7-9 pitch.

DRIVE—The power is transmitted from the transmission to the rear axle through a propeller shaft and one universal joint all enclosed in a tubular steel housing, forward end a ball and socket.

FRONT AXLE—Drop forged I-beam, with integral yoke, of special steel, double heat treated; tie rod ends steering spindles and arms of chrome vanadium steel heat treated. Wheels fitted with cup and cone ball bearings.

REAR AXLE—Three-quarter floating. Wheel bearing is carried on the wheel hub and in axle housing. All the side pressure or skidding force is sustained by the axle housing, and prevents wobbling of the wheel. The whole load of the car is carried on the axle housing and not by the driving shaft. All shafts revolve on roller bearings. Axle shafts and bevel driving pinion and gear of 3½% nickel steel. Gear ratio 3% to 1. (Patent pending).

BRAKES—Emergency, internal expanding; service, external contracting direct on rear wheel, 10 in. by 1½ in. drums.

WHEELS—Wood, artillery type, fitted with clincher rims, large hub flanges.

TIRES—Front, 30 in. by 3 in.; rear, 30 in. by 3½ in.

STEERING GEAR—By compound system of reduction, spur gear and sector adjustable for wear. 15 in. hand wheel. Left drive.

CONTROL—Lever for gear changes conveniently located in center of body. Center Control. Spark and throttle operated underneath steering wheel, independent foot accelerator. The left pedal operates the clutch and service brake. Right pedal operates the emergency brake.

FRAME—Pressed steel, channel section, extra strong. Tapered from 27 15-16 in. front to 38 in. at the rear, insuring that the body rest solidly on the frame its complete length.

SPRINGS—Front, quadruple lateral, quarter-elliptic, springs also act as shock absorber. Made of chrome vanadium steel, rear long quarter-elliptic, extra wide main leaf of chrome vanadium steel, balance of leaves of carbon steel. Triple heat treated.

WHEEL BASE—102 inches.

ROAD CLEARANCE—10 inches.

TREAD—56 inches.

TURNING RADIUS—In a twenty foot (20 ft.) radius. This feature is of great advantage while operating in crowded thoroughfares.

FENDERS—Crown, fully enclosed in front and at rear, between wheels and body; joined by running board, covered with linoleum and bound with aluminum moulding and convex filler apron.

BODY—Stream line body with a deep cowl and extra wide doors, concealed hinges, good wide seats and ample leg room. Five passenger touring type. Ten gallon gasoline supply tank, mounted directly on frame under the front seat.

FINISH—Black with hair line stripe.

PRICE—F. O. B. Flint, Michigan, \$490.00.

STANDARD EQUIPMENT—Mohair tailored top, dust hood and complete set of side curtains, ventilating, rain vision windshield, set of tools, pump, jack, electric horn.

ADDITIONAL—Electric Auto-Lite starting motor with Bendix automatic screw pinion drive and lighting system, with generator, two large size electric head lamps, electric tail lamps, all operated by switch on cowl dash, and six volt storage battery, are used for ignition instead of magneto.

The Greatest Automobile Value in the World. See it.

CENTRAL AUTO STATION

1115 Main Street

Phone 2121