

OVERLAND MODEL 80 ELICITS ADMIRATION

Appearance and Mechanical Perfection of Car Com- bine for Comfort.

Overshadowing, at first sight, all other advantages, the graceful, impressive appearance of Overland Model 80 elicits expressions of admiration wherever it is seen. From the rounded edge of the one-piece radiator shell, the hood slopes gracefully into the beautifully curved cowl; the body lines continue, unbroken by sharp angles, in a symmetrical sweep to the back of the car.

By the use of a drop frame the body is brought closer to the ground—without, however, diminishing the road clearance—and the long, low effect is enhanced by the sweep of the crowned, double-curved fenders and the clean running boards. The finish is superb and in keeping with the stylish, yet quiet dignity of the body design—a beautiful Brewster green, relieved by ivory striping.

Comfort Provided. And in riding comfort, too, the new cars offer all that could be asked. The long wheel base—114 inches—34 by 4-inch tires and perfect spring suspension make the roughest roads seem smooth. The springs are unusually long. Their wide openings allow maximum freedom of motion, and road-shocks are absorbed over an area so great that no unpleasant vibration reaches the body.

In the bodies themselves no detail that would add comfort has been overlooked. The seats are wide and deep. The unusually thick upholstery is backed by deep, resilient springs. More than ample leg room has been allowed, and each body has been designed to carry its full complement of passengers in roomy comfort. Left-hand drive with center control, and short turning radius, facilitate ease of handling in crowded traffic.

The balance wheel of a watch vibrates 360 times a minute, or 157,680,000 times a year. As each vibration covers about one and one-half revolutions, the shaft on which the balance wheel is mounted makes 236,520,000 revolutions in each year.

MOTHERS ENTERTAIN

HAGERSTOWN, April 13.—The Mothers club will close the year's work with a meeting Thursday night at the Christian church to which the husbands and fathers are invited. Following is the program:
Music—High School Orchestra.
Vocal Duet—Vera Hindman and Lona Flemming.
Address, "Eugenics"—Dr. J. M. Thuston, Richmond.
Cornet Duet—Conrad Giesler and Edwin Purple.
Music—Orchestra.
Contest.

DAYTON PRESBYTERY CONVENES IN EATON

EATON, O., April 13.—With a sermon by the retiring moderator, Dr. C. C. McKinney of Greenville, a two days' session of the Dayton Presbytery was opened Monday in the First Presbyterian church. Dr. H. C. Foster of Clinton, Greene county, was chosen moderator for the coming term. Dr. L. S. Boyce, pastor of Park Presbyterian church, Dayton, was named vice moderator. Other business included the election of Rev. E. L. Barrett of Piqua, as temporary chairman.

The church at South Charleston presented an invitation for the fall meeting of the Presbytery. The invitation was accepted.

Rev. John A. Winkler, for two years pastor of the church at Gettysburg, Darke county, tendered his resignation. Favorable action on the request was taken and the pulpit declared vacant.

Matters which were taken up at Tuesday's session include the examination of five applicants for the ministry and the selection of representatives and elders to the Presbytery's general assembly. These ministers have been recommended for the places and will be named: Representatives, Rev. John Montgomery of Piqua, and Dr. C. C. McKinney of Greenville; elders, C. D. Bidleman of Dayton, and Dr. A. T. Good of Hamilton.

Experiments in France have shown that ordinary sod is an efficient filter for sewage.

EAST GERMANTOWN WOMAN ENTERTAINS RICHMOND CLUB

EAST GERMANTOWN, Ind., April 13.—Mrs. James Laws entertained the Hiawatha Social and Literary club of Richmond Friday afternoon. Mrs. Morel and Mrs. Reber were the appointed readers for the afternoon, but all the members took part in the discussion that followed the readings. A dainty two course luncheon was served to the following guests: Mesdames A. Roser, J. Hutchinson, G. Blair, C. Darland, C. Webb, F. Brohman, E. Creager, A. Reber, O. Webb, A. Webb, C. Morgan, L. Morel, E. Stigleman, J. Myers, Misses Ollie Shute, Marjorie Morgan and Lucile Creager of Richmond and Miss Mamie Green of Centerville.

Mrs. Edward Kramer and daughter Mabel, of Indianapolis, were the guests of Mrs. Harriet Palmer last week.

Miss Helen Shafer returned to her home in Indianapolis Saturday after a week's visit with relatives and friends.

Mrs. Joe Norman of Muncie visited her sister, Mrs. R. J. Myers last week. Mr. and Mrs. Wm. Taylor have moved into B. F. Sourbeer's property adjoining his residence.

Only one modern sawmill is operated in the territory of Hawaii.

TOWNSHIP KILLS ISSUE OF BONDS

EATON, O., April 13.—In a special election held Monday, voters of Monroe township, turned down a proposed \$35,000 bond issue by a majority of 49 votes. An effort to float the issue was made for the purpose of securing funds with which to erect a township high school. The matter of school

centralization in that township is being agitated and a vote probably will be taken later.

In Japan private individuals own only the surface of the land and its products, all mineral deposits beneath the surface being the property of the government.

CONCERNING CANCER
Write to The Weber Sanatorium, 17 Garfield Place, Cincinnati, Ohio, for information concerning the Medical Treatment of All Forms of External Growths, especially Cancer. Established 25 years and well endorsed. 26-page book free.

D. D. D. For Eczema

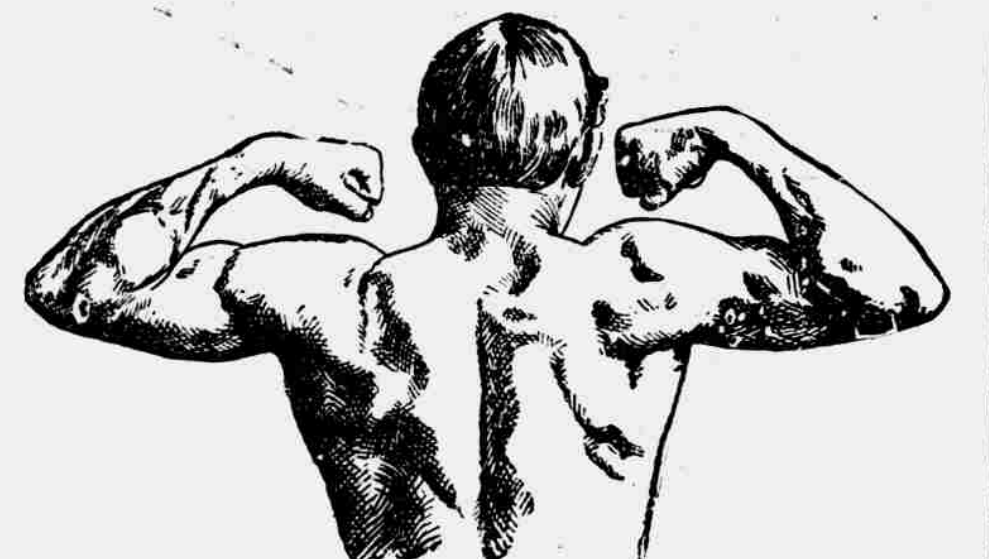
A liquid used externally—few it peels the standard skin remedy—fastest relief from all kinds of itch.
D. D. D. Soap—the mildest of cleansers—keeps the skin always clean and healthy.

Chas. F. Klemann
Electric Wiring Electric Repairing
Fixtures
Fans and Motors
We guarantee our work to be entirely satisfactory.
639 S. 11 St. Phone 2558

THIN, RUN DOWN MEN AND WOMEN

GAIN IN WEIGHT FROM TEN TO FORTY POUNDS

Sargol, the Flesh Builder, Gives New Life, New Strength, New Vitality and Puts Firm Healthy Stay-There Flesh on People Who are Underweight.



When I started taking Sargol I weighed 120 pounds. Now I weigh 156, says J. G. Wilson. It put new life in ever nerve. H. A. McCullars reports he gained 25 pounds and his health was made perfect, sleeps better and feels better than for 30 years. Miss Maud Smith reports a gain of 10 pounds and still gaining. Health greatly improved.

When these and hundreds of other once thin, underweight people write to say that as soon as they began to make Sargol a part of their meals they began to get fat, don't you think that there must be something in this widely advertised method of flesh building after all?

Don't you think you ought to try it, particularly as leading druggists everywhere sell it with the positive guarantee that unless it makes an increase in your weight you can have your money back?

You may say, "I am naturally thin, nothing can make me fat," but until you have tried Sargol you do not and cannot know that this is true.

Thin folks stay thin no matter what or how much they eat and they begin to think food has nothing to do with flesh making. But they are wrong.

Thin people stay thin because the fats, oils, starches, sugars and other flesh and fat-making elements in their food are mostly passing out of their bodies as waste. Only enough nourishment is retained to keep the body going. Nothing is saved for flesh making.

Sargol of itself will not make fat. Eat it between meals and you probably will not gain a pound. But eat a single Sargol tablet with every meal and soon you may be gaining a pound of flesh a day. Sargol is the missing link between food-eating and fat-making. It makes the food of your meals put flesh on your body.

Leo H. Fihe, Richmond.

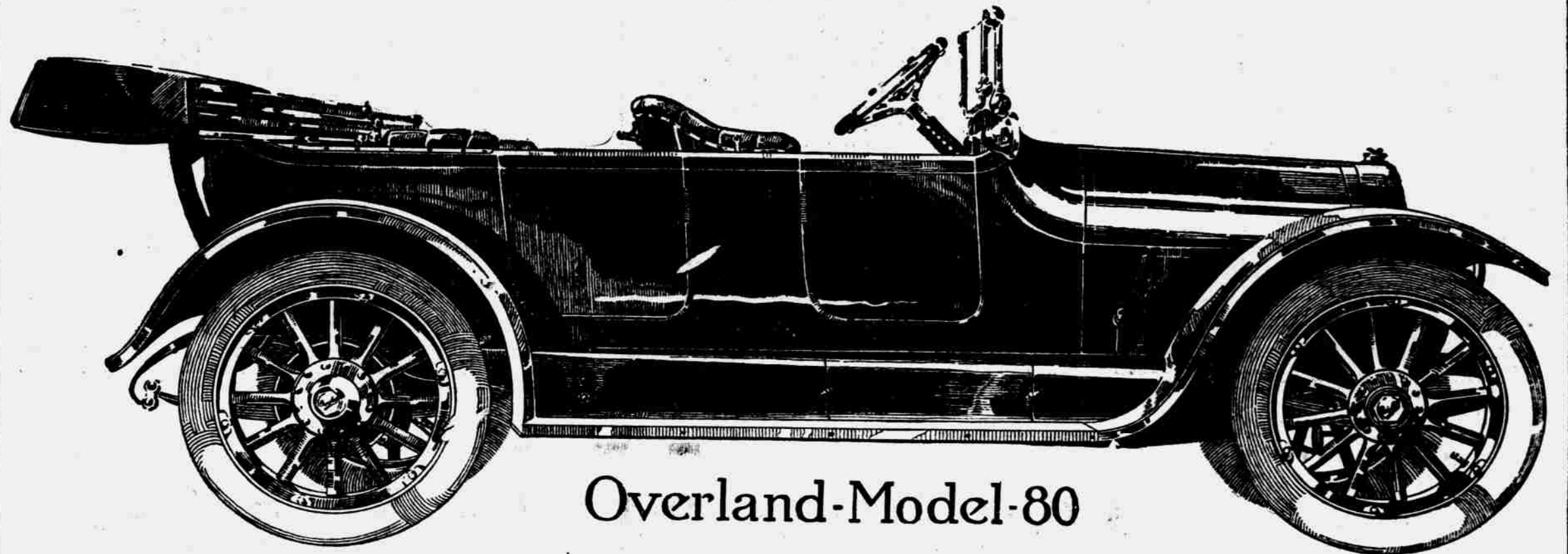
If the sugar you put in your coffee does not dissolve it does not sweeten the coffee. It is the dissolving, not the sugar, that makes the coffee sweet. It is the same with your food. Unless it properly dissolves in your stomach, separating the flesh-making nourishment from the waste, and unless the blood absorbs its full portion of the fat-making material you must stay thin.

Here is where Sargol plays its part. It acts on every mouthful you eat. It promptly stops the leakage of fats. It lets only the waste leave the body. It puts your food in a condition that means its perfect assimilation by the blood and tissues. Your body cells which have been starved begin to thrive and you begin to take on weight quickly. It's not a theory—not an experiment, but a proved fact that thousands are trying every day. Sargol succeeds where all other so-called flesh builders fail because it enables you to get 100 per cent. efficiency from your food.

Your good common sense must prove to you that if the food you eat pays you only 25 per cent. of its 100 per cent. value, that you are cheating yourself just 75 per cent. You can never be the man or woman you should be and can be as long as you continue to live on a 25 per cent. basis.

No matter how thin you are or how long you have been thin Sargol should add pounds of solid, healthy stay-there flesh to your weight and make your figure plump and symmetrical. Get a package of Sargol from your dealer and prove it today. Use it as directed and watch your daily meals put pounds of flesh on your body. Sargol is absolutely harmless and is always sold on a positive guarantee of weight increase or money back by

The Place to Get Your AUTOMOBILE Pilot Overland Chevrolet



Overland-Model-80

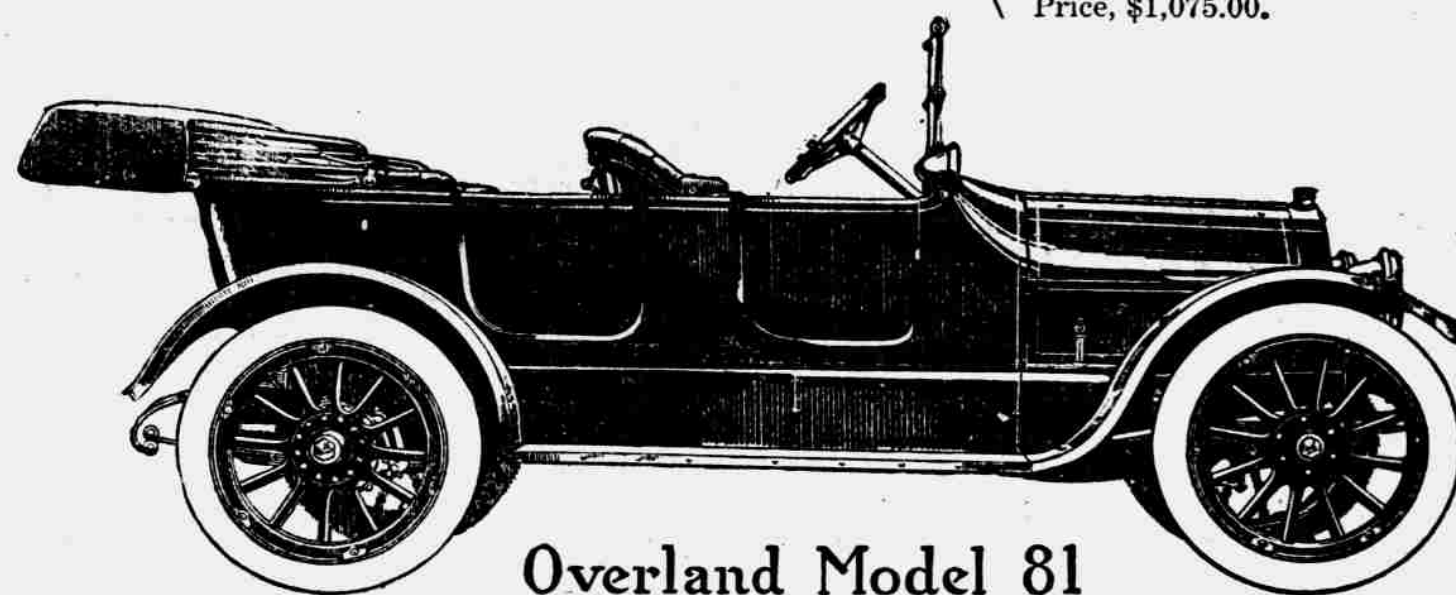
We do not care to spin a lot of hot air dope on this proposition; just merely want to say to you that we are selling the cars that give our customers satisfaction.

See the Specifications for the Pilot Light Six

Six Cylinder, 3 1/2 x 5 1/4 Teeter Motor.
Wheel Base 126 inches.
Wheels 34x4 Demountable Rims.
Left Hand Drive, Central Control.
Cantilever Spring Suspension.
Weight, 3,150 pounds.
Price, \$1,885.00.

Overland Model 80

Four Cylinder, 35 Horse Power.
Wheel Base 114 inches.
Tire 34x4.
Left Hand Drive, Center Control.
Electric Lighting and Starting.
Price, \$1,075.00.



Overland Model 81

Overland Model 81

Four Cylinder, 30 Horse Power.
Wheel Base, 106 inches.
Tire 33x4 inches.
Electric Lighting and Starting.
Price, \$850.00.

Chevrolet

In two and five passenger

Four Cylinder, Motor 3 11-16x4 inches.
Tire 32x3 1/2 inches.
Wheel Base 106 inches.
Price—Touring Car, \$875.00.
Roadstead, \$750.00.
Light Two-Passenger Car, \$495.00.

So you can see from this list, we can furnish you with a car that will fit the specifications of what you need, as well as reach your ideas in price.
Call on us at any time.

The McConaha Company

11-13 South Fourth Street

Richmond, Indiana

Expert Williard Battery Service

Complete up-to-date equipment for charging and repairing storage batteries. Repair parts and new batteries always in stock.

Richmond Electric Co.

Sales Agents.

19 South Seventh Street.

Telephone 2826.