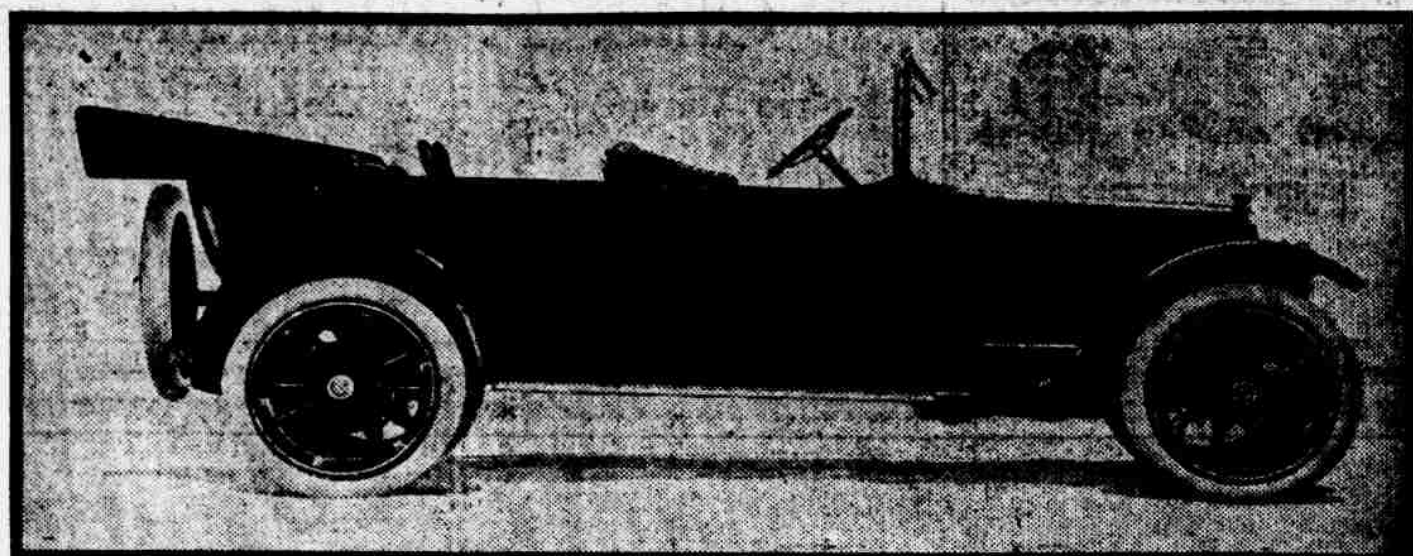


# AUTOMOBILE PAGE OF THE PALLADIUM

## Chandler Lightweight Six



CHANDLER CLASSICS.

Bosch magneto.  
Gray & Davis separate unit electric starting and lighting system.  
Bosch spark plugs.  
Mayo genuine Mercedes type radiator.  
Cast aluminum motor base extending from frame to frame.  
Worm-bevel rear axle.  
Rayfield carburetor.  
Imported annular ball bearings.  
Genuine hand-buffed leather (not split leather or machine buffed).  
Pure stream line body.  
Golde patent one-man top.  
Stewart vacuum feed.  
Jiffy curtains.  
Complete incidental equipment.  
Marvelous Chandler motor, built in the Chandler factory, gasoline consumption, seventeen to twenty miles per gallon.

After an unavoidable delay, owing to the unprecedented demand, Richmond will this week have opportunity to see and examine the justly famed Chandler Light-Weight Six, which will be shown by G. F. McCurdy, residence 1213 North A street, telephone 2364, who is local representative for Frank H. Jones, manager of the Chandler Auto Sales company, distributors for this territory.

Much is being claimed for this car, which is the real sensation of the 1915 season. It sells at \$1,295, which makes it easily the leading and winning "six" of the day, affording as it does accommodation for either seven or five passengers as desired, and combining beauty and strength that makes it compare favorably with cars greatly exceeding it in price.

**Strong and Beautiful.**  
"Seeing is believing," and Richmond will undoubtedly recognize the Chandler Six immediately on seeing it. Beautifully furnished inside and outside, and possessing exquisite design, having the famous rakish of stream-line effects so eagerly sought after by makers of automobiles costing twice as much and more, the Chandler Six is quickly distinguished among all cars. The strength and durability of the Chandler Six are its strongest assets to prospective buyers who demand perfection in this phase of a car. The best quality of steel and equipment is the imperative rule of Chandler builders, and their claims are backed by their guarantee which is worth heeding, inasmuch as the Chandler company is an immense concern operating an extensive plant in Cleveland and having abundant financial means, this company not being of the numerous variety so well known to the public.

**Easily Controlled.**  
The Chandler Six is easily controlled, which makes it a special favorite among women. For the fair sex to handle and drive this car is a supreme delight and joy. Our "lady drivers" are our best friends. But the power and "stuff" are in this car, which should not be forgotten for a moment. This beautiful, powerful car, though it can go from two to fifty-five miles on high, can easily climb the steepest hills in this section on high. For instance, the Chandler Six has already negotiated any hill in Glen Miller park on high and can and will do it again and at any time for the benefit of Chandler friends and prospective buyers.

A popular arrangement of the Chandler Six is the scheme by which two extra seats may be folded and covered up under the front seat, thus making it a five or seven passenger car as desired. This plan is carried out without interfering in the least with the car's arrangement and handsome appearance. Not in any car made is this feature excelled, and is exclusive in the Chandler at this price or anywhere near it.

### Complete in Detail.

A glimpse will show the most exciting that the Chandler Six motor is, without doubt, the most accessible and complete of any car on the market. Its arrangement is neat and simple to such a degree that this car is in a class by itself in this respect. These are pretty strong claims for the Chandler Six, but all these points and features may be seen for themselves in Richmond this week. Deliveries can now be made promptly, and

### SPRING MEDICINE

Hood's Sarsaparilla, the Great Blood Purifier, is the Best.

Spring sickness comes in some degree to every man, woman and child in our climate.

It is that run-down condition of the system that results from impure, impoverished, devitalized blood.

It is marked by loss of appetite and that tired feeling, and in many cases by some form of eruption.

The best way to treat spring sickness is to take Hood's Sarsaparilla. This old reliable family medicine purifies, enriches and revitalizes the blood. It is an all-the-year-round alternative and tonic, and is absolutely the best Spring medicine.

Get your blood in good condition at once—now. Delay may be dangerous. Ask your druggist for Hood's Sarsaparilla, and insist on having it, for nothing else can take its place.—adv.

## NEW VOLUMES ADDED TO CAMBRIDGE CITY LIBRARY BY CITIZENS

Books by Indiana Authors Get Preference When New Volumes Are Purchased For Collection.

CAMBRIDGE CITY, Ind., April 13.—Among the books coming into the library within the last few days are Esarey's History of Indiana, the latest compilation. It is the intention to add to the library a number of volumes by Indiana authors. Other works received include an encyclopedic work, "New Practical Reference Library," six volumes, especially adapted to the work of teachers and students; the last bi-annual report of the Indiana library commission; "California and Oregon Trail," by Francis Parkman; "Polyanna Grown Up," and book of synonyms and the New York Times Index Quarterly, an index to newspapers. A filing case has been given to the library by F. C. Mosbaugh, and Miss Miriam Danner of Fort Wayne is the guest of her brother, Forrest Danner. Miss Danner, who has spent several weeks in that city, returned with her.

Mr. and Mrs. M. D. Williams of New Castle spent Sunday with Mr. and Mrs. Harry Kuster.

## Fountain City Nuggets

Mr. and Mrs. Milton Woody spent Sunday with Mr. and Mrs. Denver Coggeshall.

Miss Laura Townsend will enter the state Normal at Terre Haute for the summer term.

Maud Linscomb of Richmond, visited friends here Sunday.

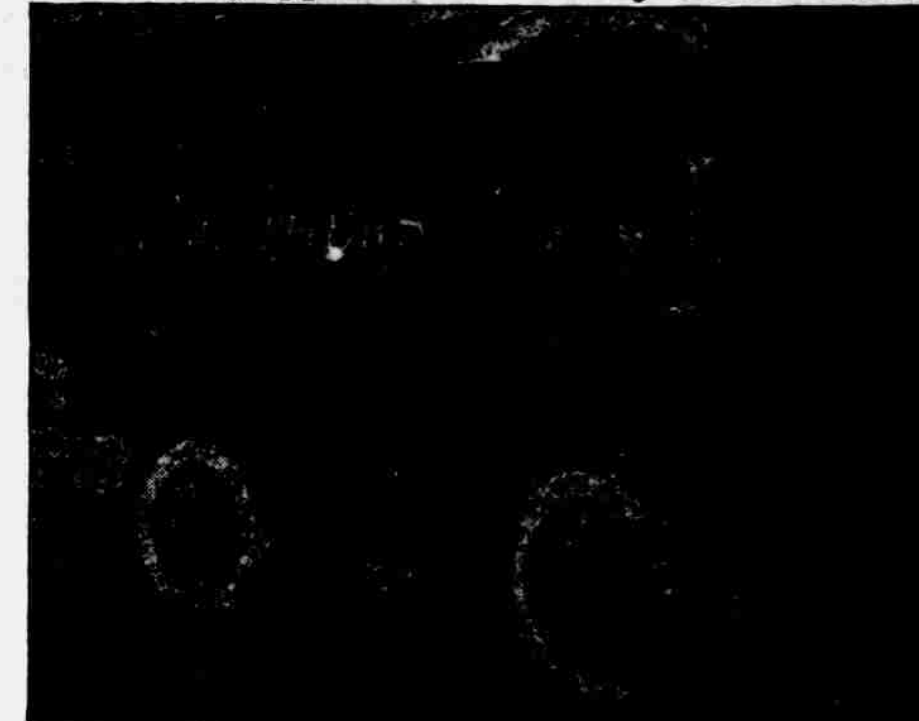
Claude Keever who is taking treatment in a sanitarium at Battle Creek, Mich., indicates that he is showing slight improvement.

## Deaths in Preble

### ELIZABETH LESH.

EATON—Funeral services for Elizabeth Lesh, 84, who died Saturday at her home near Bethlehem church, were held Monday afternoon at First Christian church, conducted by the Rev. McD. Howsare. Burial was in Mound Hill cemetery. She was the widow of Aaron Lesh, who died last October. She was born in Lanier township and her entire life was passed in the community in which she died. She is survived by three children: C. A. Lesh, near Eaton; Warren Lesh, Los Angeles; Henry Lesh, Boston, Mass.; Loren Lesh, St. Louis; Frank Lesh, Midlandtown, and Mrs. John Fadler of New Lexington.

## This Truck Gives Best Service Equipped With "Nobby Tread" Tires



No tires undergo such severe endurance tests as those on delivery cars. This big Philadelphia firm found that "Nobby Tread" Tires make delivery more certain—more safe—more economical.

Because of their dependability, motor trucks have become established as a business necessity. Everywhere you go, they pass you. It is, therefore, a strong tribute to "Nobby Treads" that they have been chosen by a vast majority of users throughout the country as the best tires to withstand really strenuous service.

# CHANDLER SIX \$1295

## A Letter from Mr. Chandler

F. H. Jones, Muncie, Ind.

Dear Mr. Jones:—We are not surprised to learn that you heard some people express doubts as to whether the Chandler selling for \$1295 is the real Chandler, the same car that has been selling for \$1595. We get the same reports from all over the country. But at the same time we are getting such a quantity of orders that we are convinced thousands of people are taking the trouble to find out for themselves that it is the same car.

It isn't strange, at all, that there are some doubters. It does seem too good to be true. I recall that you had some doubts, too, at first. It is difficult, indeed, to realize the progress that has come in the automobile industry in the past two years. You remember what a sensation the Chandler Light Six was at \$1785 two years ago. And again last year, when the car had been beautifully refined, and perfected in every detail at \$1595. Is it any wonder that people should marvel at the \$1285 price?

The fact remains—you know it, and we know it, and anyone else can easily convince himself of it—that the Chandler is the identical model that set the quality standard for light sixes and sold for \$1595. We are standing absolutely pat on this model. We haven't changed a single part or feature or material, and we won't. This is our car for the year—and doubtless for years to come—and \$1295 is the price.

The people who come into our store and examine the Chandler, and who go out and drive it, or ride in it, are convinced; and we won't worry about those folks who doubt without investigating. I feel pretty sure that every man who thinks of spending more than \$1,000 for an automobile is, at least, going to look at the Chandler. And if he does—we will be satisfied with his decision.

The factory is breaking all our past production records and the big new building is being rushed through to completion. Very truly, F. C. CHANDLER,

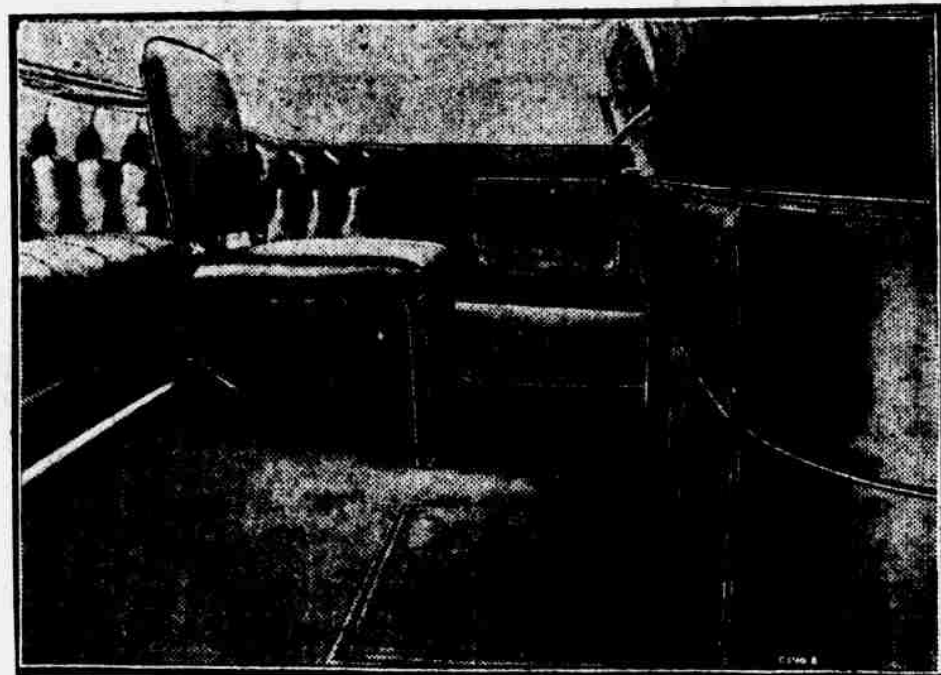
President Chandler Motor Car Co.

## Come See the Chandler Now

Bosch Magneto, Gray & Davis Separate Unit Electric Starting and Lighting System, Bosch Spark Plugs, Mayo Genuine Mercedes Type Radiator, cast aluminum motor base extending from frame to frame, Worm-Bevel Rear Axle, Rayfield Carburetor Imported Annular Ball Bearings, Genuine hand-buffed leather (not split leather or machine-buffed), pure stream-line body, Golde patent one-man top, Stewart Vacuum Feed, with Jiffy curtains, complete incidental equipment, and the MARVELOUS CHANDLER MOTOR, built in the Chandler factory. Gasoline consumption 17 to 20 miles per gallon.

## CHANDLER AUTO SALES CO.

Frank McCurdy, 1213 North A Street, Local Distributor.  
CHANDLER MOTOR CAR COMPANY, Manufacturers, Cleveland, O.



Showing one of the disappearing auxiliary seats raised and ready for use. The other auxiliary seat is folded up and out of the way.

demonstrations made on request, which doubtless means that Frank McCurdy will be a busy man for some time to come. Mr. McCurdy asserts confidently, "You can't touch or equal the Chandler Light-weight Six at anything like the price asked for this car, which is \$1,295."

# Goodyear Tires

Suppose this All-Weather tread—which is now double-thick—were pared to the thinness of the usual anti-skid. Do you think that the grips would endure and the tread endure as now? Or would it resist puncture like this matchless tread?

Suppose we used—as some do—one less ply of fabric. Suppose the whole tire were made lighter. Could the tire stand use or misuse as Goodyear tires do now?

Suppose we omitted our other exclusive features:  
Our No-Rim-Cut feature—  
Our "On-Air" cure to save blowouts—  
Our rubber rivets to combat loose treads—  
Our 126-piano-wire base for security.

All others do omit them. All of them are costly. One of them—our "On-Air" cure—costs us \$450,000 yearly.

But could Goodyear Fortified Tires retain top place if we did not give those extras?

### WE'RE ADDING BETTERMENTS

Instead of that, we are all the time adding betterments. We spend on one department \$100,000 yearly to seek out new improvements.

Our All-Weather tread—always double-thick—has been made still thicker on some sizes.

We have added an average of 14 per cent to the thickness of our Inner Tubes.

And we are making our own fabric to secure an extra strength.

### PRICE REDUCTIONS

Yet we have made big price reductions three times in two years. Our last—on February 1st—brought the total to 45 per cent. This is largely due to multiplied output.

Today you are getting in Goodyear Fortified Tires the best value ever known in tire making.

It is due to yourself that you get these tires. They are saving millions of dollars and millions of troubles to motor car owners each year. And men know this. Last year they bought about one Goodyear tire for every car in use. Join these contented tire users.

# Goodyear Fortified Tires

### FORTIFIED AGAINST

Rim-Cuts—by our No-Rim Cut feature.  
Blowouts—by our "On-Air" cure.  
Loose Treads—by many rubber rivets.  
Insecurity—by 126 braided piano wires.  
Punctures and Skidding—by our double-thick All-Weather tread.

Our Vulcanizing Department can handle all your work satisfactorily. Nassau Tires in stock.

# McConaha's Garage

418 Main. Near Court House Phone 1480