

THE IDEAL BATH ROOM

Is always equipped with an instantaneous Water Heater. It is really the only satisfactory way to heat the water for a bath in warm weather as it is done quickly without making the house unbearably hot.

These heaters are built scientifically and heat from 2 1/2 to 3 gallons of water per minute.

Sold by

Chas. Johanning
For Hot Water Heaters
11th and Main Sts.
Phone 2144

H. C. Wagner

Mantles and Grates A Specialty

ALSO OAK CONSOLS

Any Kind of Tile Work. Bath and Veranda Floors

226 SOUTH 5TH STREET

Phone 2089

BE A DEPOSITOR IN THE

Richmond Loan and Savings Association

We have now nearly 1,200 members depositing their savings in amounts from 50c to \$20 every week. It would mean a snug little sum at the end of the year and you won't have missed it. There will not only be these savings, but an interest of 5% will be added to this amount every year. WE ASK NO MEMBERSHIP FEE. LIABILITIES OVER \$300,000.00

Call here tomorrow for further information.

RICHMOND LOAN AND SAVINGS ASSOCIATION

21 NORTH 9TH ST. PHONE 1768

THE GEO. H. NOLTE Carpet And Drapery House

Carpets, Rugs, Mattings, Linoleums and Draperies, Extraordinary. This House is always on the side of their customers. We demonstrate this by the prices we make on our tremendous, unequalled stock of Carpets, Rugs, Mattings, Linoleums and Draperies. In addition to the low prices customers also have the benefit of choosing from all new, up-to-date styles and buying from this House choice and unexcelled varieties.

GEO. H. NOLTE

904-906 MAIN STREET

Only Exclusive Carpet and Drapery House
in Richmond.

From "Metal Worker, Plumber and Steam Fitter," Apr. 15, 1911.

ADVANTAGES OF BRICK-SET FURNACES

Have the furnace men of the United States been so led astray by the demand for cheapness that they have absolutely forgotten there is some benefit in having some of the things done right, even though at double the cost of cheap furnaces heating system? There are many furnace men throughout the country who smile when the brick furnace chamber is mentioned and do not seem to have an idea that it has advantages which are by no means approached in the galvanized iron casing, even though people are now spending a great deal of money to cover the galvanized iron casing of portable furnaces with insulating material to prevent any loss of heat. Even this does not bring to the owner of the plant the advantages he could get from having the heating surface enclosed within a brick chamber. Invariably there is much more space between the walls of the chamber and the heating surface than is found in the average portable furnace. This prevents overheating the air. The large volume of air is heated because the brick walls of the chamber become quite hot and this heat is retained to be absorbed by the air passing through the furnace after the fire has become very low and the heating surface itself is at a lower temperature than the walls. Furnaces of this character can be found in the older sections of the U. S. that have been in use for more than 40 years. The younger man, who is a strong advocate of the present day portable furnace and who has had no experience whatever with the old brick encased furnace, might do well to look over some of its advantages. I have pointed out that they have been in use for a great many years, demonstrating that they had a durability which would tax the best cast iron furnace of today to meet. That they had large air chambers and provided a large volume of air at a low temperature available for heating the building; that long after the fire died down it was possible for the heat in the walls of the brick chamber to keep the house at a somewhat comfortable temperature until attention could be given to the fire to bring the house to a comfortable temperature. The principal disadvantage in the eyes of the present day buyer is the cost, but it is quite possible that the additional investment required and the interest that the money would bring is nothing like as great as the additional cost required with some of the popular furnaces of today. The brick encased furnace has by no means gone out of existence. In many places men who have been in the furnace business a long time and are familiar with its merits recommend it to their customers and install it in that way. I do believe that some advantage could be gained by the men who are not familiar with what was done in the early days looking into the what I have stated and making some study for themselves of the reasons underlying the practice of the forefathers of the furnace trade.

PELICAN FURNACE CO.

THE MILLER-KEMPER COMPANY

N. W. SECOND & CENTER STS.

BET. P. C. C. & ST. L. AND G. R. & I. RY. Phone 3247

WE SELL—All kinds of Lumber, Shingles, Lath, Posts.

WE MAKE ESTIMATES on all kinds of special mill work; also Doors, Blinds, Sash, and Fine Interior Trim.

WE SELL Tige Cement, the best on the market... Flue lining, Sewer Tile and all kinds of Brick. We are agents for Western Brick Co.—Brick—Hard Shale Brick.

OUR PRICES are lower than anywhere. Let us figure with you. We believe in small profits and quick sales. Our employees are all experienced men and can fill your orders to your entire satisfaction.

REMEMBER—Our prices do our advertising. We have the quality, and we have the experience, so let us have your trade.

We deliver promptly anywhere. We ship to nearby towns—Eaton, New Paris, Greensfork, Centerville, Cambridge City, Etc... Will do well to figure with us.

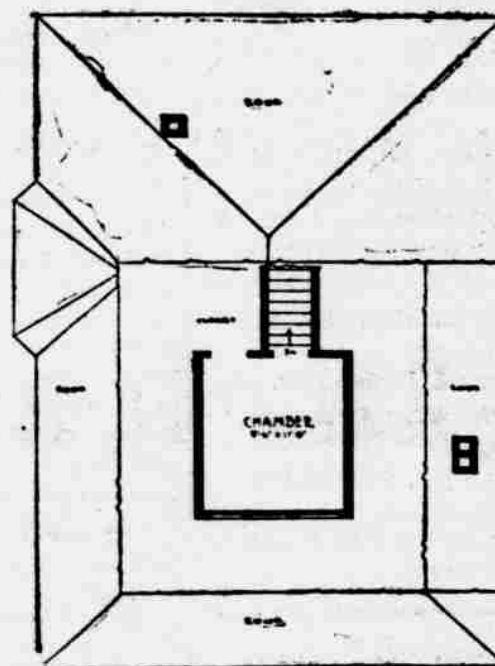
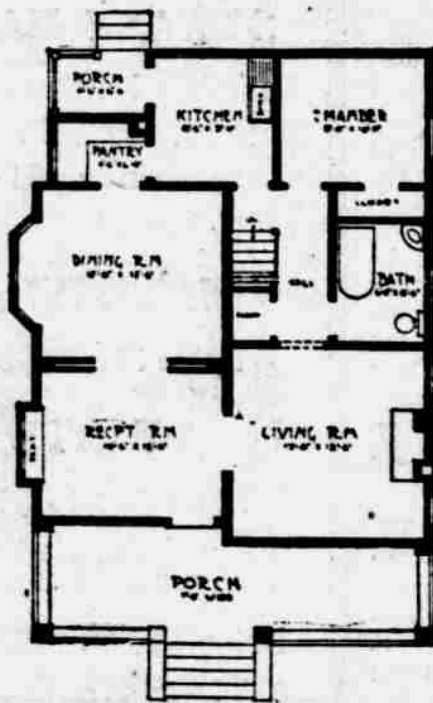
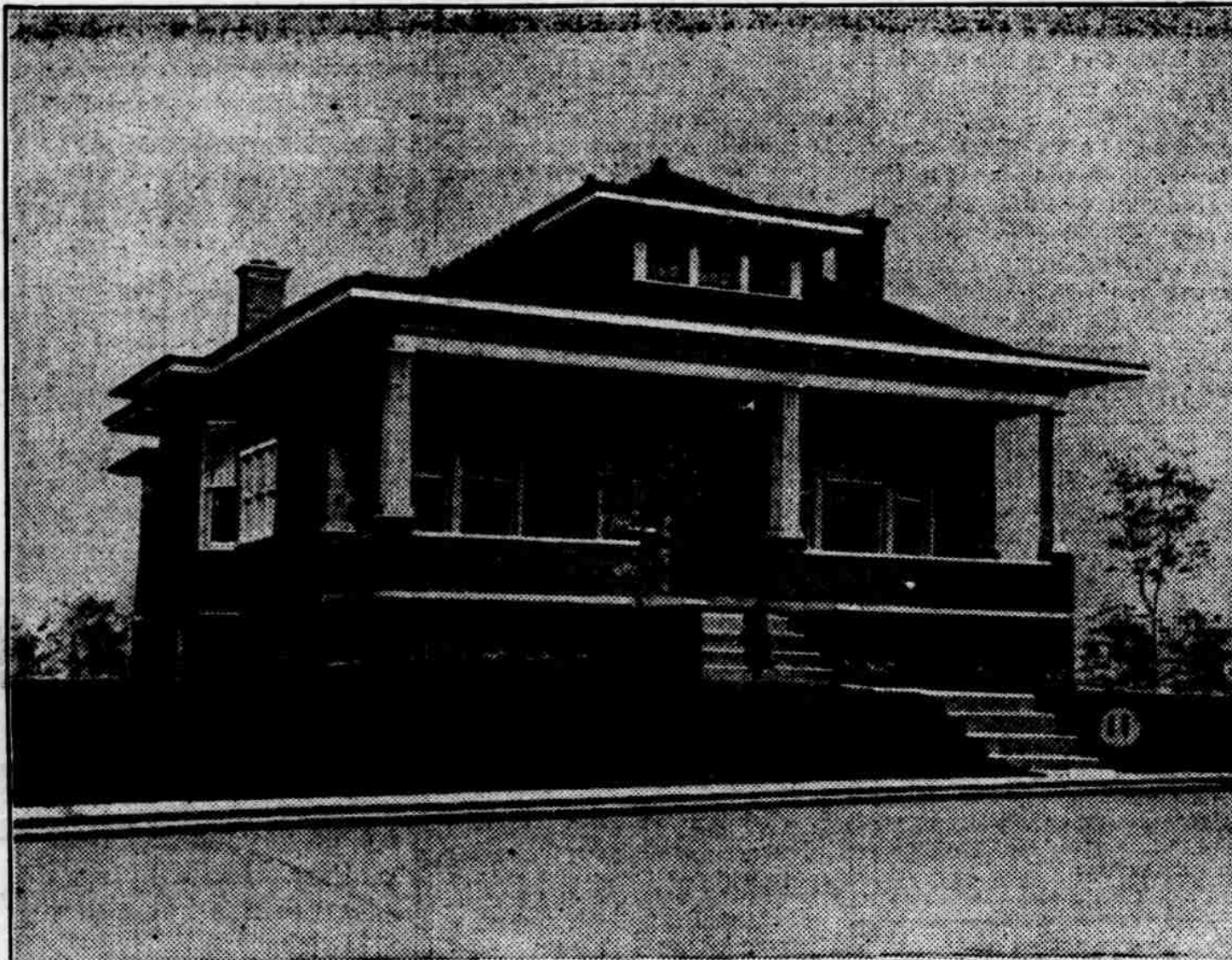
We Are Contractors and Builders

—all classes of buildings; nothing too large. Let us submit estimates. We have a large force of men and are equipped in every way to give the best possible service that can be secured anywhere. We contract buildings anywhere in Indiana, Ohio or Illinois. Let us figure with you.

THE MILLER-KEMPER COMPANY

THE HOME BEAUTIFUL -- NO. 12

As an investment there is nothing more certain than good residence properties of moderate cost. With ordinary care in the selection of a location, and personal and intelligent supervision of the construction, an enterprise of this character cannot prove other than profitable. The demand for well located and artistically designed homes is constant and never fully supplied and in a growing city the investment is one that cannot go amiss. Our popular "Home Beautiful" series offers the cream of modern, medium priced residences. A home such as is shown here is one that especially appeals as an investment proposition. The design is such as to never get out of date.



Size 27x35 feet, without porch. Height of ceilings, 9 feet 2 inches and 8 feet. Cellar, 6 feet 6 inches, divided into two rooms. Brick foundation. Outside weather-boarded over shiplap and paper. Roof shingled. Inside finish in cypress. Plastering three coats. Modern plumbing. Outside painted two coats. This house is of the bungalow type, having all on one floor except one chamber, and with a wide cornice. Estimated at \$2,100.

A Starr Piano Should Be in That Home

No home is complete unless a piano is one of the furnishings. Nothing gives that home the beauty and comfort, but a Starr Piano. Call at our warerooms and let us explain to you the superiority of the Starr.

Cash or Easy Payment Plan.

Starr Piano Co.

10TH AND MAIN STREET

USE Rex Cement IT'S BETTER

Demand that your contractor use our cement. It is known to be the very best cement manufactured. The best way to find out the quality of cement is by the

CITY TEST

Rex cement has tested as one of the best.

H. C. Bullerdick and Son

525 MAIN STREET. PHONE 1235

Honest Goods Fair Prices



No customer can afford to make arrangements for his paints and varnishes without acquainting himself with our products and prices.

A FEW OF OUR LEADERS

OLD RELIABLE HOUSE COLORS—A pure linseed oil paint. QUEEN—A ready mixed paint. OLD RELIABLE FLOOR PAINT—Hard-drying, durable, elastic. OLD RELIABLE Perfectly Pure Colors in oil. VELVET—A flat wall finish, durable and washable oil paint. HYGIENIC KALSOMINES—The one best wall finish. We also manufacture a full line of varnishes, carriage paint, wagon paint, cement paint, enamel, stains and fillers.

Old Reliable Paint Co.

WE RETAIL AT WHOLESALE PRICES.

10 and 12 S. 7th St. H. C. SHAW, Mgr.

Phone 2230.

BE SURE TO... INSURE

Your Life, Home, Income, Automobile
and All Else, with

E. B. KNOLLENBERG...

Low Cost. Liberal Contracts. Satisfactory Settlements.

BUILD YOUR OWN HOME

If you would deposit only a comparatively small amount with us each month it would only be a matter of a few years until you could build this elegant home as we pay

3 PER CENT ON TIME DEPOSITS

Capital and Surplus \$300,000.00

OPEN AN ACCOUNT TODAY

UNION NATIONAL BANK

8th and Main Streets

Wall Paper

Room Mouldings, Plate and Chair Rail, a complete line. ALL NEW STOCK and the latest patterns at Rock Bottom Prices. Paper Hanging promptly done by expert workmen; all work guaranteed. Pictures, Picture Framing, Books, Stationery and Fountain Pens.

T. F. McDONNELL

720 Main Street

Drug and Book Store

Build Your Home in BEALLVIEW

It's the coming suburb of Richmond. We still have 200 lots in Beall View addition, some of these being desirable for building homes. While Beall View is out of the city corporation, it still has all the conveniences of the city.

A house in Beall View means lower taxes; within a few blocks of street car line; electric light; Richmond city water; and then your property is increasing in value because of the fact we are bringing new factories to the South End.

Price of these lots from \$100.00 to \$350.00, cash or payments. \$6.00 down and \$1.00 per week. Address, Adolph Blickwedel, Pres. Cash Beall, Secretary.