

Up To Specifications

Our work is always up to the specifications, and our prices always square. We put our very best efforts into every job we undertake. We find that it pays both us and our customers. It pays them because once we finish a plumbing job it stays finished for years without repairs.

CHAS. JOHANNING

11th and Main Streets

Phone 2144

H. C. Wagner

**Mantles and Grates
A Specialty**

ALSO OAK CONSOLS

Any Kind of Tile Work. Bath and Veranda Floors

226 SOUTH 5TH STREET

Phone 2089

**WE HELP YOU TO OWN
YOUR OWN HOME**

**Richmond Loan and
Savings Association**

We loan you the money to build a home. It is our aim to help our borrowers in every way possible consistent with business prudence.

Our loans are payable, not in large amounts, but in small weekly or monthly payments.

It is as easy to meet our required payments as to pay rent and you can pay more at any time you may wish.

Call at our office and we will be glad to give you any information you desire.

**RICHMOND LOAN AND
SAVINGS ASSOCIATION**

21 NORTH 9TH ST.

PHONE 1768

THE GEO. H. NOLTE

Carpet And Drapery House

Carpets, Rugs, Matting, Linoleums and Draperies. Extraordinary. This House is always on the side of their customers. We demonstrate this by the prices we make on our tremendous, unequalled stock of Carpets, Rugs, Matting, Linoleums and Draperies. In addition to the low prices customers also have the benefit of choosing from all new, up-to-date styles and buying from this House choice and unexcelled varieties.

GEO. H. NOLTE

904-906 MAIN STREET

Only Exclusive Carpet and Drapery House in Richmond.

From "Metal Worker, Plumber and Steam Fitter," Apr. 15, 1911.

ADVANTAGES OF BRICK-SET FURNACES

Have the furnace men of the United States been so led astray by the demand for cheapness that they have absolutely forgotten there is some benefit in having some of the things these men, even though at a doubt the cost of cheap furnaces heating system? There are many furnace men throughout the country who smile when the brick furnace chamber is mentioned and do not seem to have an idea that it has advantages which are by no means approached in the galvanized iron casing, even though people are now spending a great deal of money to cover the galvanized iron casing of portable furnaces with insulating material to prevent any loss of heat. Even this does not bring to the owner of the plant the advantages he could get from having the heating surface enclosed within a brick chamber. Invariably there is much more space between the walls of the chamber and the heating surface than is found in the average portable furnace. This prevents overheating the air. The large volume of air is heated because the brick walls of the chamber become very hot and this heat is retained to be absorbed by the air passing through the furnace after the fire has become very low and the heating surface itself is at a lower temperature than the walls. Furnaces of this character can be found in the older sections of the U. S. that have been in use for more than 40 years. The younger man, who is a strong advocate of the present day portable furnace and who has had no experience whatever with the old brick enclosed furnace, might do well to look over some of its advantages. I have pointed out that they have been in use for a great many years, demonstrating that they had a durability which would tax the best cast iron furnace of today to meet that they had large air chambers and provided a large volume of air at a low temperature available for heating the building; that long after the fire died down it was possible for the heat in the walls of the brick chamber to keep the house at a somewhat comfortable temperature until attention could be given to the fire to bring the house to a comfortable temperature. The principal disadvantage in the eyes of the present day buyer is the cost, but it is quite possible that the additional investment required and the interest that the money would bring is nothing like as great as the additional cost required with some of the popular furnaces of today. The brick enclosed furnace has by no means gone out of existence. In many places men who have been in the furnace business a long time and are familiar with its merits recommend it to their customers and install it in that way. I do believe that some advantages could be gained by the men who are not familiar with what was done in the early days looking into the what I have stated and making some study for themselves of the reasons underlying the practice of the forefathers of the furnace trade.

PLUMBING FURNACE CO.

THE MILLER-KEMPER CO.

N. W. SECOND & CENTER STS.

EET. P. C. C. & ST. L. AND G. R. & I. RY. Phone 3247

MILL WORK--LUMBER

We are selling lots of building material in Mill Work, Lumber, Brick and Cement. Lots of it is going out of the city. Why should you go elsewhere when people from elsewhere come to deal with us? Of course our price and quality is right or we could not do it. People who have gone out of the city find it pays better to let us fill their bill. We deliver anywhere in the city and ship to parties in nearby towns—Boston, Eaton, New Paris, Cambridge City, Centerville, Greensfork, etc., will do well to figure with us.

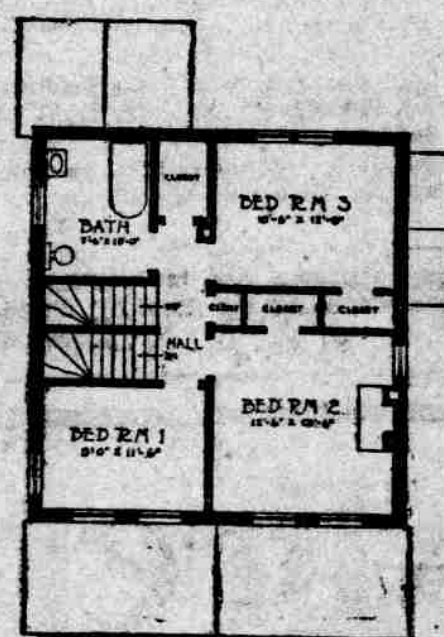
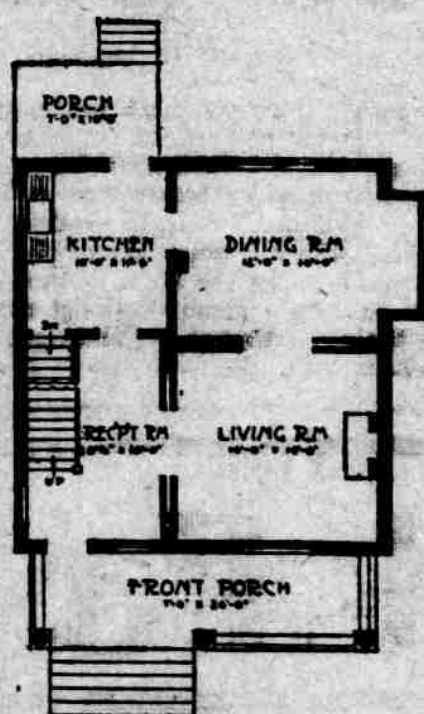
We Are Contractors and Builders

—all classes of buildings; nothing too large. Let us submit estimates. We have a large force of men and are equipped in every way to give the best possible service that can be secured anywhere. We contract buildings anywhere in Indiana, Ohio or Illinois. Let us figure with you.

THE MILLER-KEMPER COMPANY

THE HOME BEAUTIFUL -- NO. 9

A double lot often lends itself to an improvement which materially enhances the home already established. Here is a house which would improve the appearance of any locality. With your home as collateral it is easy to secure a loan on the most favorable terms and by turning the rent of the new house into payments on the loan a few years will suffice to pay for it.



Size 22x30. Height of ceilings 9 feet 4 inches and 8 feet 4 inches. Cellar 7 feet. Has laundry, furnace and fuel rooms. Exterior walls are brick, gables stucco panel-work. Roof slated, attic floored. Good hardware and plumbing. Inside finished in oak and cypress with hardwood floors in principal rooms and hall.

Estimated cost from \$2,000 to \$2,300.

A Starr Piano Should Be in That Home

No home is complete unless a piano is one of the furnishings. Nothing gives that home the beauty and comfort, but a Starr Piano. Call at our warerooms and let us explain to you the superiority of the Starr.

Cash or Easy Payment Plan.

Starr Piano Co.

10TH AND MAIN STREET

USE Rex Cement IT'S BETTER

Demand that your contractor use our cement. It is known to be the very best cement manufactured. The best way to find out the quality of cement is by the

CITY TEST

Rex cement has tested as one of the best.

**H. C. Bullerdick
and Son**

525 MAIN STREET.

PHONE 1235

**DO
YOU
KNOW**



that a nicely painted house, both inside and outside, will attract several times more attention than one that is poorly painted? No matter how good a painter is, if he uses inferior paint, he can not put the nice, neat, clean appearance to a house that can be obtained by using

OLD RELIABLE PAINT

Besides a full line of paints, we carry a complete line of stains and varnishes.

EVERYTHING IN PAINTS.

Old Reliable Paint Co.

WE RETAIL AT WHOLESALE PRICES.

10 and 12 S. 7th St. H. C. SHAW, Mgr.

Phone 2230.

INSURANCE

..E. B. KNOLLENBERG..

KNOLLENBERG ANNEX

You Could Build This Home Today

If you had opened an account with us about seven years ago with \$20.00 and added to it the same amount every month, the interest at 3 per cent added every six months would have enabled you to have a home as good as the above:

CAPITAL AND SURPLUS, \$300,000.00

OPEN AN ACCOUNT TODAY

**UNION
NATIONAL
BANK**

8th and Main Streets

Wall Paper

Room Mouldings, Plate and Chair Rail, a complete line. ALL NEW STOCK and the latest patterns at Rock Bottom Prices. Paper Hanging promptly done by expert workmen; all work guaranteed. Pictures, Picture Framing, Books, Stationery and Fountain Pens.

T. F. McDONNELL

720 Main Street

Drug and Book Store

Build Your Home in BEALLVIEW

It's the coming suburb of Richmond. We still have 200 lots in Beall View addition, some of these being desirable for building homes. While Beall View is out of the city corporation, it still has all the conveniences of the city.

A house in Beall View means lower taxes; within a few blocks of street car line; electric light; Richmond city water; and then your property is increasing in value because of the fact we are bringing new factories to the South End.

Price of these lots from \$100.00 to \$350.00, cash or payments. \$6.00 down and \$1.00 per week. Address, Adolph Blickwedel, Pres. Cash Beall, Secretary.