

DEMAND SANITARY PLUMBING



It's a waste of time and effort to try to find a better place to have your plumbing or heating work done. You know we employ none but competent mechanics, use the best materials that we can buy and personally superintend all work therefor, giving you the best for your money; and most important of all, our charges are reasonable. Ask to see our

INSTANTANEOUS WATER HEATERS

Chas. Johanning

11th and Main Phone 2144

H. C. Wagner

Mantles and Grates

A Specialty

ALSO OAK CONSOLS

Any Kind of Tile Work. Bath and Veranda Floors

226 SOUTH 5TH STREET

Phone 2089

**BE A DEPOSITOR
IN THE**

Richmond Loan and Savings Association

We have now nearly 1,200 members depositing their savings in amounts from 50c to \$20.00 every week. It would mean a snug little sum at the end of the year and you won't have missed it.

There will not only be these savings, but an interest of 5 per cent will be added to this amount every year. WE ASK NO MEMBERSHIP FEE.

LIABILITIES OVER \$300,000.00

Call here tomorrow for further information.

RICHMOND LOAN AND SAVINGS ASSOCIATION

21 NORTH 9TH ST. PHONE 1768

**THE GEO. H. NOLTE
Carpet and Drapery House**

Carpets, Rugs, Matting, Linoleums and Draperies, Extraordinary. This House is always on the side of their customers. We demonstrate this by the prices we make on our tremendous, unequalled stock of Carpets, Rugs, Matting, Linoleums and Draperies. In addition to the low prices customers also have the benefit of choosing from all new, up-to-date styles and buying from this House choice and unexcelled varieties.

GEO. H. NOLTE

904-906 MAIN STREET

Only Exclusive Carpet and Drapery House in Richmond.

From "Metal Worker, Plumber and Steam Fitter," Apr. 15, 1911.

ADVANTAGES OF BRICK-SET FURNACES

Have the furnace men of the United States been so led astray by the demand for cheapness that they have absolutely forgotten there is some benefit in having some of the things done right, even though at doubt the cost of cheap furnaces heating system? There are many furnace men throughout the country who smile when the brick furnace chamber is mentioned and do not seem to have an idea that it has advantages which are by no means approached in the galvanized iron casing. Even though people are now spending a great deal of money to cover the galvanized iron casing of portable furnaces with insulating material to prevent any loss of heat. Even this does not bring to the owner of the plant the advantages he could get from having the heating surface enclosed within a brick chamber. Invariably there is much more space between the walls of the chamber and the heating surface than is found in the average portable furnace. This prevents overheating the air. The large volume of air is heated because the brick walls of the chamber become quite hot and this heat is retained to be absorbed by the air passing through the furnace after the fire has become very low and the heating surface itself is at a lower temperature than the walls. Furnaces of this character can be found in the older sections of the U. S. that have been in use for more than 40 years. The younger man, who is a strong advocate of the present day portable furnace and who has had no experience whatever with the old brick enclosed furnace, might do well to look over some of its advantages. I have pointed out that they have been in use for a great many years, demonstrating that they had a durability which would tax the best cast iron furnace of today to meet, that they had large air chambers and provided a large volume of air at a low temperature available for heating the building, that long after the fire died down it was possible for the heat in the walls of the brick chamber to keep the house at a somewhat comfortable temperature until attention could be given to the fire to bring the house to a comfortable temperature. The principal disadvantage possible that the additional investment required and the interest that the money would bring is nothing like as great as the additional coal required with some of the popular furnaces of today. The brick enclosed furnace has by no means gone out of existence. In many places men who have been in the furnace business a long time and are familiar with its merits recommend it to their customers and install it in that way. I do believe that some advantage could be gained by the men who are not familiar with what was done in the early days looking into the what I have stated and making some study for themselves of the reasons underlying the practice of the forefathers of the furnace trade.

FILGEM FURNACE CO.

THE MILLER-KEMPER COMPANY

N. W. SECOND & CENTER STS.
BET. P. C. C. & ST. L. AND G. R. & I. RY. Phone 3247

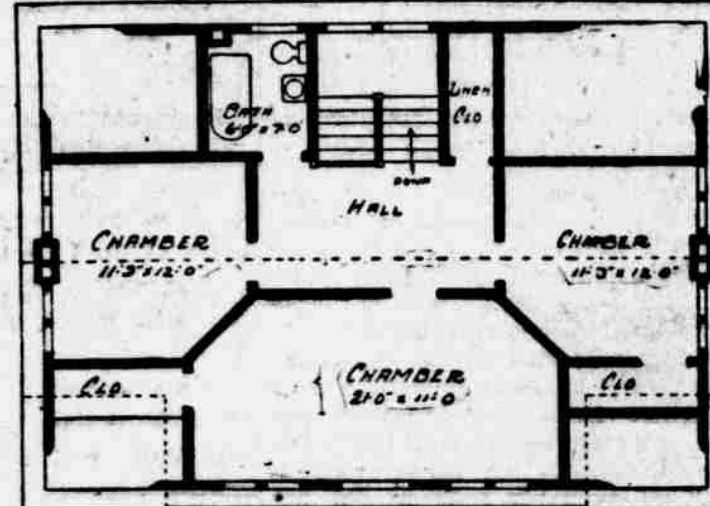
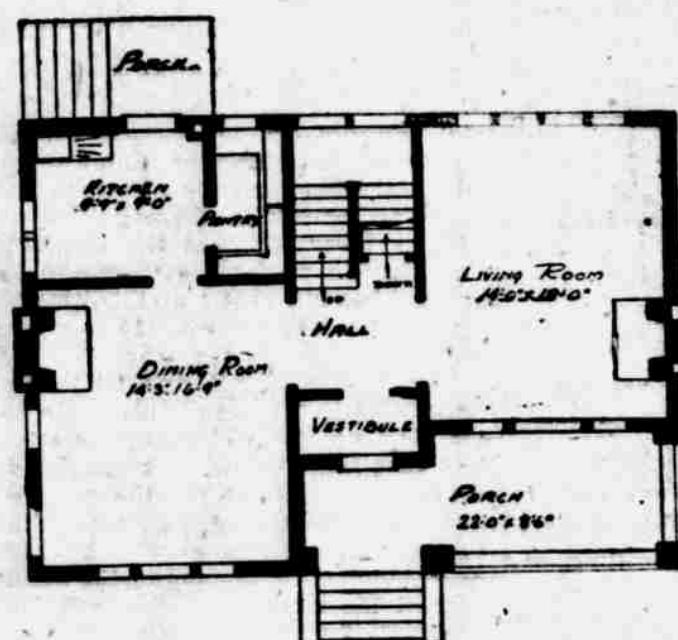
MILL WORK--LUMBER

We are selling lots of building material in Mill Work, Lumber, Brick and Cement. Lots of it is going out of the city. Why should you go elsewhere when people from elsewhere come to deal with us? Of course our price and quality is right or we could not do it. People who have gone out of the city find it pays better to let us fill their bill. We deliver anywhere in the city and to parties in nearby towns—Boston, Eaton, New Paris, Cambridge City, Centerville, Greensfork, etc. will do well to figure with us. WE ARE CONTRACTORS AND BUILDERS—all classes of buildings; nothing too large. Let us submit estimates. We have a large force of men and are equipped in every way to give the best possible service that can be secured anywhere. We contract buildings anywhere in Indiana, Ohio or Illinois. Let us figure with you.

THE MILLER-KEMPER COMPANY

THE HOME BEAUTIFUL -- NO. 6

Build a home. No investment is so certain to be permanently valuable. Ordinary care in the selection of a location, and careful supervision of the work as it progresses assures the builder of an asset which will be constantly appreciating. Even if it is necessary to practice economy to own a home you will be amply repaid in future satisfaction. The home owner possesses a basis of credit readily appreciated by the business man and almost any temporary sacrifice is small when compared with the ultimate satisfaction experienced by the man who owns a home free of encumbrances.



An attractive 2 story basement house 38 feet x 28 feet, first story brick with stone trimming, second story either stucco or siding could be made very attractive by the use of shingles. Has two large mantels in first story and should be finished in hardwood except kitchen and pantry which should be in Yellow Pine. Second floor should be Birch, white enamel finish. Estimated cost \$2800 to \$3200.

**A Starr Piano
Should Be in
That Home**

No home is complete unless a piano is one of the furnishings. Nothing gives that home the beauty and comfort, but a Starr Piano. Call at our warerooms and let us explain to you the superiority of the Starr.

Cash or Easy Payment Plan.

Starr Piano Co.

10TH AND MAIN STREET

**USE
Rex Cement
IT'S BETTER**

Demand that your contractor use our cement. It is known to be the very best cement manufactured. The best way to find out the quality of cement is by the

CITY TEST

Rex cement has tested as one of the best.

**H. C. Bullerdiok
and Son**

525 MAIN STREET. PHONE 1235



IS THE TIME for that New House, for Spring Cleaning, Repainting of Walls, Floors, Porch Furniture, Etc.

THERE WE SHINE!

Having a store that sells paints and paint supplies exclusively, we are able to handle paints of every description.

**You Know the High Standard of
OLD RELIABLE PAINT**

which costs about \$1.35 per gallon when reduced with linseed oil

Old Reliable Paint Co.

10 and 12 S. 7th St. H. C. SHAW, Mgr. Phone 2230.

A PSALM OF LIFE

"Lives of great men all remind us, not in time or tide to trust, but insuring, leave behind us, something more than debts and dust."

INSURE YOUR

LIFE, HOME, INCOME WITH

E. B. KNOLLENBERG

Security—Low Cost—Broad Contracts—Prompt Settlements.

Knollenberg Annex.

Phone 2082.

**You Could Build This
Home Today**

If you had opened an account with us about seven years ago with \$20.00 and added to it the same amount every month, the interest at 3 per cent added every six months would have enabled you to have a home as good as the above.

CAPITAL AND SURPLUS, \$300,000.00

OPEN AN ACCOUNT TODAY

**UNION
NATIONAL
BANK**

8th and Main Streets

T. F. McDONNELL

720 Main Street

Drug and Book Store

Wall Paper

Room Mouldings, Plate and Chair Rail, Pictures,

Picture Framing, Books, Stationery,

Fountain Pens.

**Build Your Home
in
BEALLVIEW**

It's the coming suburb of Richmond. We still have 200 lots in Beall View addition, some of these being desirable for building homes. While Beall View is out of the city corporation, it still has all the conveniences of the city.

A house in Beall View means lower taxes; within a few blocks of street car line; electric light; Richmond city water; and then your property is increasing in value because of the fact we are bringing new factories to the South End.

Price of these lots from \$100.00 to \$350.00, cash or payments. \$6.00 down and \$1.00 per week. Address, Adolph Blickwedel, Pres. Cash Beall, Secretary.