

DEMAND SANITARY PLUMBING



It's a waste of time and effort to try to find a better place to have your plumbing or heating work done. You know we employ none but competent mechanics, use the best materials that we can buy and personally superintend all work therefor, giving you the best for your money; and most important of all, our charges are reasonable. Ask to see our

INSTANTANEOUS WATER HEATERS

Chas. Johanning

11TH AND MAIN STREETS

H. C. Wagner

**Mantles and Grates
A Specialty**

ALSO OAK CONSOLS

Any Kind of Tile Work. Bath and Veranda Floors

226 SOUTH 5TH STREET

Phone 2089

**Be a Depositor
in the**

**Richmond Loan and
Savings Association**

We have now nearly 1,200 members depositing their savings in amounts from 50c to \$20.00 every week. It would mean a snug little sum at the end of the year and you won't have missed it. There will not only be these savings, but an interest of 5 per cent will be added to this amount every year. WE ASK NO MEMBERSHIP FEE. LIABILITIES OVER \$300,000.00

Call here tomorrow for further information.

**RICHMOND LOAN AND
SAVINGS ASSOCIATION**

21 NORTH 9TH ST.

PHONE 1768

**THE GEO. H. NOLTE
Carpet And Drapery House**

Carpets, Rugs, Mattings, Linoleums and Draperies, Extraordinary. This House is always on the side of their customers. We demonstrate this by the prices we make on our tremendous, unequalled stock of Carpets, Rugs, Mattings, Linoleums and Draperies. In addition to the low prices customers also have the benefit of choosing from all new, up-to-date styles and buying from this House choice and unexcelled varieties.

GEO. H. NOLTE

904-906 MAIN STREET

Only Exclusive Carpet and Drapery House
in Richmond.

**PILGRIM
FURNACE
Gives
Good Results**

**Another Car Load Just
Arrived**

Uptown Office, 529 Main Street.

Warehouse, 714 to 720 South 9th St.

THE MILLER-KEMPER COMPANY

(Incorporated.)

Office, Yard and Mill
Corner North West Second
and Center Streets
Between Pennsylvania
and G. R. & I. Railroads
Automatic Phone 3247

General Contractors & Builders

All Classes of Buildings, Mill Work, Lumber
Nos. 707 to 717 North West Second St.

OREN A. MILLER,
Pres. and Gen. Mgr.
CHAS. SCHUMAKER,
Vice-Pres.
EDWIN G. KEMPER,
Sec'y and Treas.

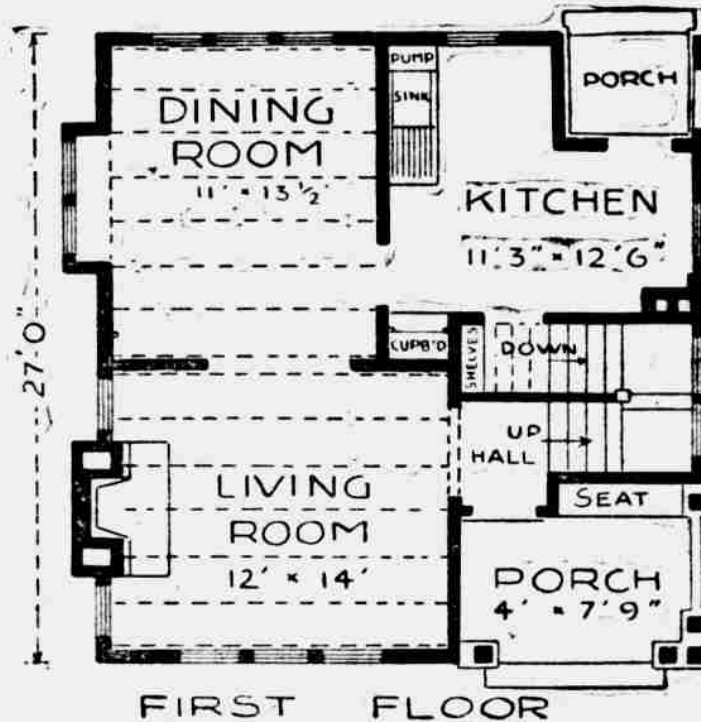
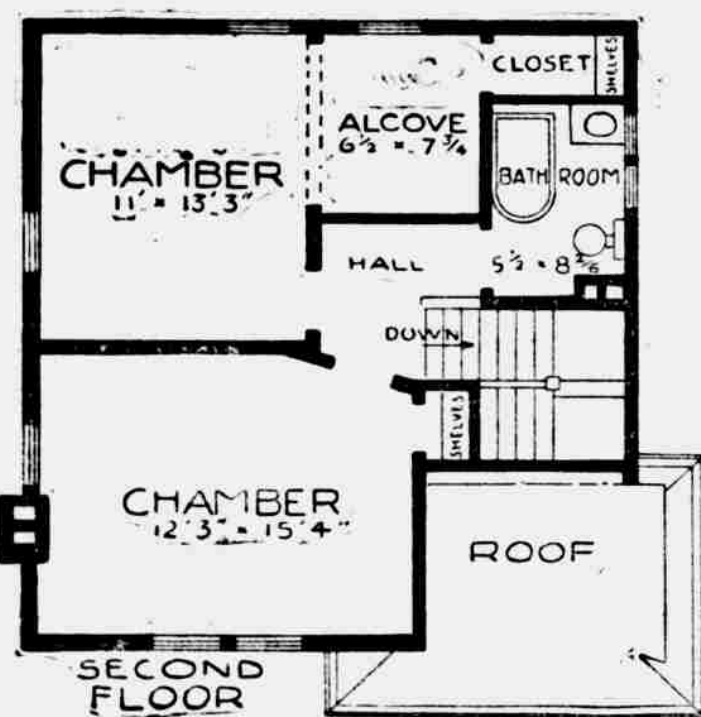
Richmond, Indiana,

We have seven acres of ground, the best location in the city for this line of business, our mill and yards lying between the P. H. and G. R. & I. Ry. with all the ideal facilities for receiving, shipping and handling our material without unnecessary expense. We gladly deliver to all parts of the city at all times. From now on you need not go out of the city for anything in our line. We can quote you just as low price on the same grade of goods, under the same conditions that you can buy anywhere. There has been enough business in this line going out of the city to keep another concern going night and day. We are here to take care of this business. Let us show you. We also contract all classes of buildings, no matter how large, how many of how small, from the ground up to turning the key over to occupy. We look after every little detail, thus avoiding you all the usual worry connected with building. If you are interested in the plan shown here we shall be pleased to give you a figure. If you want separate figures on the mill work or the lumber we are always ready to quote you the lowest possible figure. It will pay you if you are going to do any building to let us figure on such material as you may need. We have in stock now some of the famous California Redwood in lap siding and plain boards. It is the finest stuff on the market and the coming material for all classes of work. Before buying let us figure with you. "We are here for the good of RICHMOND."

THE MILLER-KEMPER COMPANY

THE HOME BEAUTIFUL

The coming summer will mark an epoch in Home Building in Richmond. The Palladium will run similar illustrations from time to time suggesting practical Homes and Bungalows.



Bungalow Style, 6 Rooms, 2 Halls, and Complete Bath

Description: Rough siding stained brown, stucco gables, and green shingles. Should be built at a cost not to exceed \$1900.00. A very attractive, cosy little home which should appeal to the prospective builder.

**A Starr Piano
Should Be in
That Home**

No home is complete unless a piano is one of the furnishings. Nothing gives that home the beauty and comfort, but a Starr Piano. Call at our warerooms and let us explain to you the superiority of the Starr. Cash or Easy Payment Plan.

Starr Piano Co.

10TH AND MAIN STREET

**USE
Rex Cement
IT'S BETTER**

Demand that your contractor use our cement. It is known to be the very best cement manufactured. The best way to find out the quality of cement is by the

CITY TEST

Rex cement has tested as one of the best.

**H. C. Bullerdick
and Son**

525 MAIN STREET.

PHONE 1235

**For
That
New
Home**



and for remodeling your old home DO NOT FORGET OLD RELIABLE PAINT, the CHEAPEST GOOD Paint on the market.

We have House and Roof Paint, also Floor and Wall Paint, in fact we have a paint for any purpose that you want.

Old Reliable Paint Co.

H. C. SHAW, Mgr.

10 & 12 S. 7th Street

Phone 2230

**Homes Are Main-
tained on Incomes**

You Insure Your Home

Is Your Income Insured?

E. B. Knollenberg

Writes Fire, Accident, Health and Life Insurance.

Office: Knollenberg Annex.

**You Could Build This
Home Today**

If you had opened an account with us about seven years ago with \$20.00 and added to it the same amount every month, the interest at 3 per cent added every six months would have enabled you to have a home as good as the above.

CAPITAL AND SURPLUS, \$300,000.00

OPEN AN ACCOUNT TODAY

**UNION
NATIONAL
BANK**

8th and Main Streets

T. F. McDONNELL

720 Main Street

Drug and Book Store

Wall Paper

Room Mouldings, Plate and Chair Rail, Pictures,

Picture Framing, Books, Stationery,

Fountain Pens.

**Build Your Home
in
BEALLVIEW**

It's the coming suburb of Richmond. We still have 200 lots in Beall View addition, some of these being desirable for building homes. While Beall View is out of the city corporation, it still has all the conveniences of the city.

A house in Beall View means lower taxes; within a few blocks of street car line; electric light; Richmond city water; and then your property is increasing in value because of the fact we are bringing new factories to the South End.

Price of these lots from \$100.00 to \$350.00, cash or payments. \$6.00 down and \$1.00 per week. Address, Adolph Blickwedel, Pres. Cash Beall, Secretary.