

EMPIRE STATE CASTS 175,000 FOR W. H. TAFT

(Continued from Page One)

plurality in New York state will be about 57,000.

BULLETIN.

New York.—The New York Herald says Taft will receive 306 electoral votes.

BULLETIN.

New York.—1,445 out of 1,632 in Greater New York give Hughes 226, 200, Chanler 284,983. At this rate Chanler will carry Greater New York by 65,200. 1,512 out of 1,632 in greater New York give Taft 273,220, Bryan 264,940. At this rate Taft will carry this district with 8,750.

New York.—1,439 districts out of 1,632 in Greater New York give Taft 266,313, Bryan 269,350.

New York.—400 districts in Manhattan out of 734 give Taft, 51,086; Bryan, 72,982; Hisgen, 5,627.

New York.—1,003 districts in New York state above the Bronx, out of 3,043, give Hughes, 31,701 over Chanler. At this same rate the state above the Bronx would give Hughes 95,833 over Chanler. 786 out of 1,632 districts in Greater New York give Chanler, 36,940 over Hughes. At this rate Chanler will have the city by 76,750 and Hughes the whole state by 19,083.

New York.—450 districts in Brooklyn out of 587 give Taft, 80,432, and Bryan, 73,503.

New York.—King County.—Hughes plurality will be at least 50,000.

New York.—1,320 out of 1,633 districts in Greater New York give Taft, 233,443; Bryan, 230,234; Hisgen, 22,201.

New York.—Manhattan.—240 districts out of 734 give Hughes 29,415; Chanler, 47,316; Shearn, 4,069. The similar districts in 1904 gave Higgins 32,278; Herriek, 46,429.

Albany, N. Y.—Taft carried Chester county and every republican candidate was elected and both the senators and congressmen alike.

New York.—In greater New York 1,256 precincts out of 1,632 give Hughes 204,502; Chanler 238,185. In 270 precincts of state indicate Taft will carry the state by about 53,800 outside of Greater New York.

New York.—320 districts in Manhattan out of 734 give Taft 46,267; Bryan, 55,745; Hisgen, 4,327. The same districts in 1904 gave Roosevelt, 45,301; Parker, 57,531.

NEW YORK.—In 917 districts in New York state above the Bronx, Hughes is leading Chanler, 27,001.

In 170 precincts in Greater New York, Chanler has 22,241 over Hughes. At this rate he should have the whole city by 76,000.

TAFT LEADS ROOSEVELT.

New York.—Taft runs ahead of Roosevelt of four years ago in Queens county. 250 election districts out of 857 in Brooklyn give Taft 44,481; Bryan 38,662.

WINS CITY, ALSO.

New York, Nov. 3.—Taft carries New York City by 5,000.

New York.—1,800 districts in New York state outside Greater New York, give Taft, 300,239; Bryan, 240,649.

New York.—103 out of 3,043 districts in New York city give above the Bronx, Taft, 63,940 over Bryan. At this rate the city above the Bronx will give Taft 179,537 over Bryan. 850 districts in Greater New York give Bryan 742 over Taft. At that rate he would have the whole city by 1,500, and Taft would have the whole state by 178,037.

Brooklyn, N. Y.—Returns from 340 precincts in Brooklyn give Taft 61, 957; Bryan 53,524.

BULLETIN.

New York.—774 out of 3,043 districts in New York above the Bronx, give Taft 39,446 over Bryan. At the same rate the state above the Bronx gives Taft 155,193 over Bryan; 200 out of 1,632 districts in Greater New York, give Bryan 6,105 over Taft. This rate the whole city will give Bryan over Taft 48,800. Giving state to Taft by 106, 233.

TIMES FLASHES HUGHES.

New York.—The Times is flashing Hughes' election.

BULLETIN.

New York.—The New York Journal concedes Hughes' election by 100,000 votes.

BULLETIN.

Erle county, New York, complete, gives Taft, 40,101; Bryan, 35,583; Hughes, 35,367; Chanler, 40,913. Roosevelt's plurality in 1904 was 13,057.

BULLETIN.

Albany, New York, complete gives Taft a plurality of 5,500; Hughes 3, 500. Roosevelt carried the county in 1904 by 6,198.

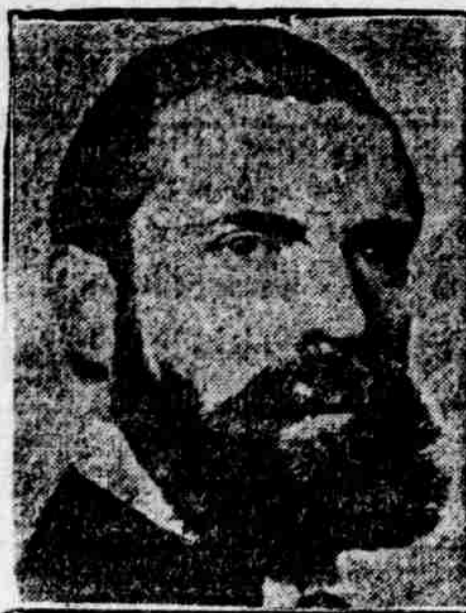
BULLETIN.

Rome, N. Y.—Complete returns give Taft, 2,228; Bryan, 1,966. Same in 1904—Roosevelt, 2,151; Parker, 1,912.

BULLETIN.

New York.—The Brooklyn Eagle in an extra says Taft has carried Ohio, Maine, New Hampshire, Pennsylvania, Rhode Island and Wisconsin, and that Hughes is elected governor of New York by 10,000. The Evening Journal says it looks like Hughes. Both par-

WINNER OF N. Y. STATE ELECTION



CHARLES HUGHES.

In carrying New York, Governor Hughes did not do it with ease. He waged one of the bitterest campaigns in the history of the state. He was opposed by the liberal element the principal part of which was the book-makers and race track men. They fought his election to the bitter end, but were unsuccessful in defeating him.

ties claim Colorado. Indications favor Bryan.

BULLETIN.

Utica.—Complete vote—Taft, 7,701; Bryan, 6,719; Hughes, 7,216; Chanler, 7,282.

Syracuse.—Complete vote—Taft, 17,794; Bryan, 11,976; Hughes, 17,124; Chanler, 12,045.

BULLETIN.

New York.—The New York Herald is signaling from tower indicates Taft's election. The New York Times says Taft wins by 175,000 to 200,000.

BULLETIN.

New York, Nov. 3.—State Chairman Woodruff says Taft will carry New York state by 50,000.

Connecticut goes to Taft by 20,000. Returns at this hour indicate Taft carried Ohio and New Jersey by heavy pluralities. All New England States sure for Taft. Taft carries a large plurality.

BULLETIN.

New York.—At 7:15 p. m., Republican National Chairman Hitchcock claims 325 electoral votes for Taft; 100,000 plurality in New York State for Taft, and that Governor Hughes be elected.

BULLETIN.

New York.—Hughes' plurality in New York state will probably be about 57,000.

New York.—1208 districts above the Bronx give Taft 72,262 over Bryan. At this rate the state above the Bronx will give Taft 170,408 over Bryan. 1,169 districts in Greater New York give Taft 2,244 over Bryan. At this rate he will have the whole city by 30,000 and state by 173,408.

New York.—Based on 120 out of 587 districts in Brooklyn, Chanler's plurality will be 12,000.

GAINS PILES UP.

Boston, Mass., Nov. 13.—One hundred and fifty towns in Massachusetts give Taft 45,554; Bryan 17,728. Same towns in 1904 gave Roosevelt 45,619; Parker 18,975. For governor—Draper (Rep.), 39,553; Vahey (Dem.), 19,308. Same last year, Guild 34,852; Whitney 17,449.

New York.—759 precincts out of 31,043 districts in New York state above the Bronx, give Hughes 16,137 over Chanler. At the same rate the state above the Bronx gives Hughes 63,903 over Chanler.

Brooklyn.—In 180 districts out of 587 Taft will receive a plurality of 16,000, against 6,000 for Roosevelt in 1904.

Brooklyn, New York.—140 districts out of 587 districts give Taft 24,250; Bryan 20,629; Hisgen 129.

Brooklyn, New York.—160 districts out of 587, give Taft 28,171; Bryan 23,845; Hisgen 2,572.

New York.—110 districts in Manhattan out of 734 give Taft 15,593; Bryan, 18,985; Hisgen, 1,334.

New York.—130 districts out of 890 in Manhattan below the Bronx give Taft, 18,900; Bryan, 22,050. At this rate Bryan will carry the borough by 21,500.

Manhattan.—140 districts out of 734 in Manhattan give Taft 19,583; Bryan 24,541; Hisgen, 1,783.

New York.—568 election districts in New York state give Taft 161,074; Bryan, 119,577; Hisgen, 898. Same in 1904, Roosevelt, 158,408; Parker, 101,821. 650 election districts in New York state give Taft, 173,828; Bryan, 128,494; Hisgen, 993.

Rensselaer County New York.—Forty-five out of 87 election districts give Taft 1,140; Bryan 8,973; Hisgen 10, 498; Chanler 9,589. Same in 1904 gave Roosevelt 11,075; Parker 8,549; Hughes 9,929 and Hearst 9,507.

Brooklyn.—Twenty election districts out of 587 give Chanler a plurality of 1,004.

New York.—The New York World says Taft is elected. The returns from 180 of 205 election districts in Boston show Bryan, 34,131; Taft, 34,869. For

Governor Draper, (Rep.) 28,119; Vahty, (Dem.) 40,708.

Manhattan, N. Y.—Fifty election districts out of 734 give Taft, 5,819; Bryan, 8,957; Hisgen, 574.

Schenectady, N. Y.—City gives Taft 1,795; Bryan, 5,801.

Queen's County, N. Y.—Twenty election districts out of 113 give Taft 2,505; Bryan, 3,273; Hughes, 368.

Greater New York.—104 election districts out of 1,633 give Taft 19,341; Bryan, 21,357; Hisgen, 2,033.

Brooklyn, N. Y.—100 election districts out of 587, give Taft, 18,302; Bryan, 16,324. At this rate Taft will carry boroughs of Brooklyn by 15,000.

Brooklyn, N. Y.—190 districts out of 587 give Taft, 18,302; Bryan, 15,324.

Greater New York.—Fifty-eight districts out of 1,634 give Hughes, 4, 773; Chanler, 7,932; Shearn, 707.

Greater New York.—Forty districts out of 113 in Queens' county, New York, gives Taft, 5,540; Bryan, 6,925; and Hisgen, 700.

Rochester, N. Y.—The vote for president and governor in this city, practically correct is Taft, 24,069; Bryan, 17,641; Hughes, 22,711; Chanler, 19,110.

New York.—187 election districts in New York state give Hughes 55,555; Chanler, 54,024; Shearn, 227; same districts in 1906 gave Hughes 50,357; Hearst, 44,314.

New York.—New York state, outside city, 419 precincts out of 3,024—Taft 24,295 over Bryan. At this rate the state outside of city will give Taft 176,494 over Bryan.

New York City.—Twenty districts in Manhattan out of 734 give Taft 2,088; Bryan 3,457.

Watertown, N. Y.—The total vote here follows: Taft, 3,130; Bryan, 1,870; Hughes, 2,829; Chanler, 2,123.

Elmira, N. Y.—Twenty-six districts: Taft, 4,768; Bryan, 4,120; Hughes, 4,527; Chanler 4,210 (same in 1904); Roosevelt, 4,584; Parker, 3,923.

Troy, N. Y.—New York Herald gives total vote of Troy, N. Y.: Taft, 9,752; Bryan, 8,549; Hisgen, 148; Hughes, 8,261; Chanler, 9,068; Shern, 153.

Utica, N. Y.—Taft, 7,701; Bryan, 6,711; Hughes, 7,206; Chanler, 7,242.

Auburn, N. Y.—Total—Taft, 4,068; Bryan, 2,734; Hughes, 3,828; Chanler, 3,106.

New York.—Thirty precincts in Manhattan—Taft 3,164; Bryan 5,536.

New York.—New York World concedes Taft's election.

New York.—Thirty districts in Brooklyn out of 587 give Hughes 3,090; Chanler 4,099.

New York.—Forty precincts in Manhattan—Taft 4,788; Bryan 7,168.

DENEEN WINS IN ILLINOIS

(Continued From Page One.)

Deneen lost Cook county, his home county by 3,500 about made up the loss by his own state pluralities. Illinois will return nineteen republican members of congress according to present returns, the democrats winning in six districts.

BULLETIN.

Chicago.—Indications at 9:30 p. m. tonight, are that Taft has carried Illinois by 170,000.

Deneen for governor has been elected by approximately 100,000. The legislature, which elect a United States senator will be strongly republican.

BULLETIN.

Chicago.—Estimated plurality for Taft in Illinois is 200,000. The estimated plurality for Deneen for governor is 150,000.

Madison, Ill.—125 precincts out of a total of 132 in Madison, give Overstreet a majority of 500. He admits his defeat.

CANNON IS RE-ELECTED.

Danville, Ill., Nov. 3.—Joe Cannon re-elected by 7,000.

BULLETIN.

Predicting on the strength of New York vote for Taft, the democratic national committee has made the statement that Taft will carry Chicago by a vote of 50,000.

BULLETIN.

State chairman of Illinois wires Chairman Hitchcock that Taft carries Illinois.

BULLETIN.

Chicago, Nov. 3.—Five hundred and fifteen precincts in Chicago give Taft 72,789; Bryan, 57,743. Deneen, Republican, for Governor, 18,644; Stevenson, Democrat, 21,054.

Chicago, Ill.—133 precincts, report: Taft, 15,848; Bryan, 13,682.

BULLETIN.

Danville, Ill.—Cannon's re-election is claimed by 5,000 to 6,000 majority.

BULLETIN.

Winnebago County, Ill.—Seventeen out of 34 districts give Taft plurality

His Election in Indiana Conceded by the Republicans



HON. THOMAS R. MARSHALL.

of 1,645. At same rate the total will be 3,200 against 7,000 in the county for Roosevelt in 1904.

Chicago.—394 districts out of 1,200 in Chicago, indicates a plurality for Taft in the city of 30,000, against Roosevelt's plurality of 11,000.

Chicago, Ill.—410 out of 1,260 precincts in Chicago give Taft 56,977; Bryan, 45,933; 150 out of 1,200 precincts in Chicago, give Deneen, 14,051; Stevenson, 16,316.

BULLETIN.

Chicago.—Indications are that Stevenson, Democrat, for Governor, has carried the city of Chicago by about 20,000.

Chicago.—Ninety-five precincts out of 1,260 in Chicago, give Taft 10,401; Bryan 9,799.

Chicago.—655 out of 1,260 precincts in Chicago give Taft 94,519; Bryan 74,673. Chicago returns from 225 precincts indicate that Stevenson, Democratic candidate for governor, has carried Chicago by a plurality of about 20,000.

OHIO STANDS SON FAVORITE SON LOYALLY

(Continued From Page One.)

3,362. Same in 1905 gave Herrick, (Rep.) 4,070; Pattison, 3,143.

Cleveland.—430 districts out of 4,430 in Ohio—Taft got 44,508, Bryan 44,871. This same district in 1904 gave Roosevelt 47,293 and Parker 29,430.

Columbus, O.—State Chairman Williams states that Taft will carry the state by 100,000 and that Harris will poll 50,000.

Cincinnati.—Four precincts out of 4,430 in the state of Ohio gave Taft, 339; Bryan, 471. Same in 1904 gave Roosevelt 416, Parker 348.

Cincinnati.—Based on eleven out of 40 precincts in the city of Cincinnati, Taft will carry his own city by 14, 500 plurality.

Cleveland.—Election commissioners state that the vote will not be counted until 4 o'clock and no returns will be given out until that time.

Columbus, O.—270 precincts of state give Taft, 86,683; Bryan, 27,490.

Cleveland.—Up to 9 o'clock tonight returns from only one precinct out of 253 in Cleveland has been reported. This gave Taft 235; Bryan 153.

Cincinnati, O., Nov. 3.—Judge Taft makes his first comment with broad smile. "Just say everything looks favorable," was his remark.

Cincinnati, O., Nov. 3.—There are 4, 430 precincts in Ohio. The ticket is very long and will be late giving result. Not a precinct had reported at 7:40 p. m.

Would Be Safe. A police sergeant in New York was boasting of the honesty that prevailed in his precinct. "Why," he said, "you might hang your gold watch on a lamp-post in the evening and find it still there in the morning."

"You don't mean to say nobody would take the lamp-post," exclaimed a listener.

"No, I mean to say nobody would take the lamp-post," said the sergeant.

WISCONSIN IS SAFELY REPUBLICAN

Davidson Elected Governor—Taft Wins.

Milwaukee, Wis., Nov. 4.—Taft has carried Wisconsin by from 70,000 to 80,000 and Davidson's plurality for Governor is out to one half that.

In the state congressional districts at least nine of the eleven elected are republicans. One is sure democratic, while in the other, Congressman Safford is being closely pressed by his socialist opponent. The legislature is safely republican.

Milwaukee, Wis.—Early returns show gains for Taft over Roosevelt's vote four years ago.

Milwaukee, Wis.—Tardy returns indicate Taft's plurality of 75,000, and the legislature republican. This will re-elect Stephenson.

Milwaukee.—Taft is running ahead of all the republican ticket in this state.

Milwaukee.—The Sentinel claims Wisconsin for Taft and Davidson for Governor by an estimated plurality of 75,000.

Milwaukee, Wis.—237 precincts in Wisconsin including 120 in Milwaukee county, give Bryan 29,918; Taft 35, 046.

Milwaukee.—Telegram to National Chairman Hitchcock from Chairman Neager, of Milwaukee, states that Taft's plurality in Wisconsin will be 75,000.

DUPLICATES THE ROOSEVELT VOTE

Rhode Island Gives 16,000 for Taft.

Providence, R. I.—At midnight with about two-thirds of the 161 precincts heard from, the figures indicated a probable plurality of 16,000 for Taft in this state. This is about the plurality given Roosevelt in 1904. The republican state ticket has undoubtedly been successful.

Providence, R. I.—Returns from 30 districts out of 161 in Rhode Island, indicate that Taft has carried the state by a plurality greatly reduced from that of Roosevelt's in 1904. The vote of Taft is 5,618; Bryan 3,403.

SENATOR FORAKER AROUSSED FROM SLEEP

Result Didn't Surprise Him a Bit.

Cincinnati, O., Nov. 4.—Senator Foraker was called up at 10:30 o'clock last night and asked if he had anything to say about the election. The senator said he had been asleep and that he had nothing to say, except that the election of Judge Taft was expected. "Nobody expected anything else, did they?" he added. The senator asked how the state and county had gone but would not say anything further.

GEORGIANA: Out chef says Gold Medal Flour only. VERONICA.

GAINS BY BRYAN IN OLD KENTUCKY

Beats Parker's Plurality in 1904.

Louisville, Ky., Nov. 4.—Kentucky polled the largest vote in the history of the state. At midnight tonight almost complete returns from sixty of 119 counties in state give Bryan plurality of 7,097, and a gain over Parker's plurality in 1904 of the same counties of 758. The ratio of gains has been consistent throughout the state and that Bryan has probably beaten by several thousand, Parker's plurality of 1904.

BRYAN IN KENTUCKY.

Louisville, Ky.—The state committee estimates Bryan's plurality in this state at 15,000.

BULLETIN.

Louisville, Ky.—Twenty-four precincts in Louisville give Bryan 280 plurality; Shearly (Dem.), for congress, 651 plurality.

Louisville, Ky.—Louisville and Jefferson county, 124 precincts out of 222, Taft, 15,477; Bryan, 12,863; Kinhead (Rep.), for congress, 14,708; Sherry (Dem.), 14,068.

Sufficient returns have been received to indicate the election of democrats to congress in all of Kentucky's eleven districts except the ninth and eleventh. The eleventh is solidly republican and the ninth is in doubt.

BRYAN MAKES BIG GAINS IN IOWA

Taft Carries the State, However.

Des Moines, Ia., Nov. 3.—Incomplete returns indicate that Iowa will give Taft a majority of 40,000 votes, though Bryan has made tremendous gains over his last count against Roosevelt. B. F. Carroll will be elected governor by about the same majority.