

WINNER OF N. Y. STATE ELECTION

districts in 1904 gave Higgins 32,278; Herrick, 46,429.

Albany, N. Y.—Taft carried Chester county and every republican candidate was elected and both the senators and congressmen alike.

New York—In greater New York 1,256 precincts out of 1,632 give Hughes 294,502; Chanler 258,185. In 279 precincts of state indicate Taft will carry the state by about 53,800 outside of Greater New York.

New York—320 districts in Manhattan out of 734 give Taft 46,267; Bryan, 55,745; Hiseen, 4,327. The same districts in 1904 gave Roosevelt, 45,301; Parker, 57,531.

NEW YORK—In 917 districts in New York state above the Bronx, Hughes is leading Chanler, 27,901.

In 170 precincts in Greater New York, Chanler has 22,241 over Hughes. At this rate he should have the whole city by 76,000.

TAFT LEADS ROOSEVELT.
New York—Taft runs ahead of Roosevelt of four years ago in Queens county. 250 election districts out of 587 in Brooklyn give Taft 44,481; Bryan 38,662.

WINS CITY, ALSO.
New York, Nov. 3.—Taft carries New York City by 5,000.

New York—1,800 districts in New York state outside Greater New York, give Taft, 390,239; Bryan, 249,649.

New York—103 out of 3,043 districts in New York city give above the Bronx, Taft, 63,940 over Bryan. At this rate the city above the Bronx will give Taft 179,537 over Bryan. 850 districts in Greater New York give Bryan 742 over Taft. At that rate he would have the whole city by 1,500, and Taft would have the whole state by 178,037.

Brooklyn, N. Y.—Returns from 340 precincts in Brooklyn give Taft 64,957; Bryan 53,524.

BULLETIN.
New York—774 out of 3,043 districts in New York, above the Bronx, give Taft 39,446 over Bryan. At the same rate the state above Bronx, gives Taft 156,193 over Bryan; 200 out of 1,632 districts in Greater New York, give Bryan 6,105 over Taft. This rate the whole city will give Bryan over Taft 48,860. Giving state to Taft by 106,238.

TIMES FLASHES HUGHES.
New York—The Times is flashing Hughes' election.

BULLETIN.
New York—The New York Journal concedes Hughes' election by 100,000 votes.

BULLETIN.
New York—Taft, complete, gives Taft, 40,101; Bryan, 35,583; Hughes, 35,387; Chanler, 40,913. Roosevelt's plurality in 1904 was 13,087.

BULLETIN.
Albany, N. Y.—Complete gives Taft a plurality of 5,500; Hughes 3,500. Roosevelt carried the county in 1904 by 6,198.

BULLETIN.
New York—The Brooklyn Eagle in an extra says Taft has carried Ohio, Maine, New Hampshire, Pennsylvania, Rhode Island and Wisconsin, and that Hughes is elected governor of New York by 10,000. The Evening Journal says it looks like Hughes. Both parties claim Colorado. Indications favor Bryan.

BULLETIN.
Rome, N. Y.—Complete returns give Taft, 2,228; Bryan, 1,966. Same in 1904—Roosevelt, 2,151; Parker, 1,912.

BULLETIN.
Utica—Complete vote—Taft 7,701; Bryan, 6,719; Hughes, 7,216; Chanler, 7,282.

BULLETIN.
Syracuse—Complete vote—Taft, 17,794; Bryan, 11,976; Hughes, 17,124; Chanler, 12,045.

BULLETIN.
New York—The New York Herald is signaling from tower indicates Taft's election. The New York Times says Taft wins by 175,000 to 200,000.

BULLETIN.
New York, Nov. 3.—State Chairman Woodruff says Taft will carry New York state by 50,000.

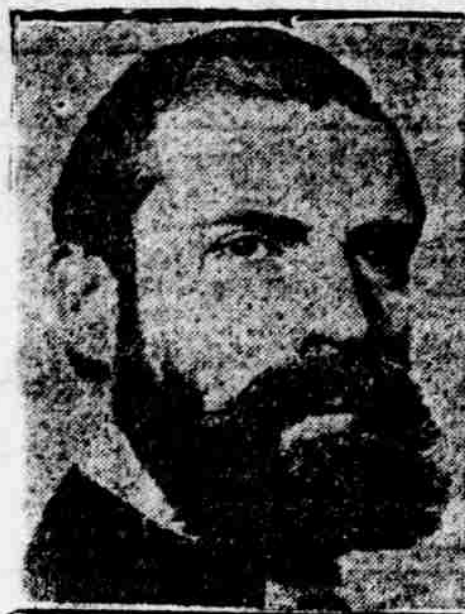
Connecticut goes to Taft by 20,000. Returns at this hour indicate Taft carried Ohio and New Jersey by heavy pluralities. All New England States sure for Taft. Taft carries a large plurality.

BULLETIN.
New York—At 7:15 p. m., Republican National Chairman Hitchcock claims 325 electoral votes for Taft; 100,000 plurality in New York state for Taft, and that Governor Hughes be elected.

BULLETIN.
New York—Hughes' plurality in New York state will probably be about 57,000.

New York—1208 districts above the Bronx give Taft 72,263 over Bryan. At this rate the state above the Bronx will give Taft 170,408 over Bryan. 1,169 districts in Greater New York give Taft 2,244 over Bryan. At this rate he will have the whole city by 20,000 and state by 178,408.

New York—Based on 120 out of 587 districts in Brooklyn, Chanler's plurality will be 12,000.



CHARLES HUGHES.

In carrying New York, Governor Hughes did not do it with ease. He waged one of the bitterest campaigns in the history of the state. He was opposed by the liberal element the principal part of which was the book-makers and race track men. They fought his election to the bitter end, but were unsuccessful in defeating him.

(Rep.), 34,553; Vahey (Dem.), 19,308. Same last year, Guild 34,852; Whitney 17,449.

New York—759 precincts out of 31,043 districts in New York state above the Bronx, give Hughes 16,137 over Chanler. At the same rate the state above the Bronx gives Hughes 63,903 over Chanler.

Brooklyn—In 180 districts out of 587 Taft will receive a plurality of 16,000, against 6,000 for Roosevelt in 1904.

Brooklyn, New York—140 districts out of 587 districts give Taft 24,250; Bryan 20,629; Hiseen 129.

Brooklyn, New York—160 districts out of 587, give Taft 28,171; Bryan 23,845; Hiseen 2,572.

New York—110 districts in Manhattan out of 734 give Taft 15,593; Bryan, 18,985; Hiseen, 1,334.

New York—130 districts out of 890 in Manhattan below the Bronx give Taft, 18,900; Bryan, 22,050. At this rate Bryan will carry the borough by 21,500.

Manhattan—140 districts out of 734 in Manhattan give Taft 19,583; Bryan 24,544; Hiseen, 1,783.

New York—568 election districts in New York state give Taft 161,074; Bryan, 119,577; Hiseen, 898. Same in 1904, Roosevelt, 158,408; Parker, 101,821. 650 election districts in New York state give Taft, 173,828; Bryan, 128,494; Hiseen, 993.

Rensselaer County New York—Forty-five out of 87 election districts give Taft 1,140; Bryan 9,973; Hiseen 10,498; Chanler 9,589. Same in 1904 gave Roosevelt 11,075; Parker 8,549; Hughes 9,929 and Hearst 9,507.

Brooklyn—Twenty election districts out of 587 give Chanler a plurality of 1,004.

New York—The New York World says Taft is elected. The returns from 180 of 205 election districts in Boston show Bryan, 34,131; Taft, 34,869. For Governor Draper, (Rep.) 28,119; Vahity, (Dem.) 40,708.

Manhattan, N. Y.—Fifty election districts out of 734 give Taft, 5,819; Bryan, 8,957; Hiseen, 574.

Schenectady, N. Y.—City gives Taft 1,795; Bryan, 5,801.

Queen's County, N. Y.—Twenty election districts out of 113 give Taft 2,605; Bryan, 3,273; Hughes, 368.

Greater New York—104 election districts out of 1,632 give Taft 19,341; Bryan, 21,357; Hiseen, 2,033.

Brooklyn, N. Y.—100 election districts out of 587, give Taft, 18,302; Bryan, 16,324. At this rate Taft will carry boroughs of Brooklyn by 15,000.

Brooklyn, N. Y.—190 districts out of 587 give Taft, 18,302; Bryan, 15,324.

Greater New York—Fifty-eight districts out of 1,634 gives Hughes, 4,773; Chanler, 7,932; Shearn, 767.

Greater New York—Forty districts out of 113 in Queens' county, New York, gives Taft, 5,540; Bryan, 6,925; and Hiseen, 700.

Rochester, N. Y.—The vote for president and governor in this city, practically correct is Taft, 24,069; Bryan, 17,641; Hughes, 22,711; Chanler, 19,110.

New York—187 election districts in New York state give Hughes 55,555; Chanler, 54,024; Shearn, 227; same districts in 1906 gave Hughes 50,357; Hearst, 44,314.

New York—New York state, outside city, 419 precincts out of 3,034—Taft 24,295 over Bryan. At this rate the state outside of city will give Taft 176,494 over Bryan.

New York City—Twenty districts in Manhattan out of 734 give Taft 2,088; Bryan 3,457.

Watertown, N. Y.—The total vote here follows: Taft, 3,130; Bryan, 1,870; Hughes, 2,829; Chanler, 2,123.

Elmira, N. Y.—Twenty-six districts:

Taft, 4,768; Bryan, 4,120; Hughes, 4,527; Chandler, 4,210 (same in 1904); Roosevelt, 4,584; Parker, 3,923.

Troy, N. Y.—New York Herald gives total vote of Troy, N. Y.: Taft, 9,752; Bryan, 8,549; Hiseen, 148; Hughes, 8,261; Chandler, 9,068; Shearn, 153.

Utica, N. Y.—Taft, 7,701; Bryan, 6,711; Hughes, 7,206; Chanler, 7,242.

Auburn, N. Y.—Total—Taft, 4,068; Bryan, 2,734; Hughes, 3,828; Chanler, 3,106.

New York—Thirty precincts in Manhattan—Taft 3,164; Bryan 5,536.

New York—New York World concedes Taft's election.

New York—Thirty districts in Brooklyn out of 587 give Hughes 3,090; Chanler 4,099.

New York—Forty precincts in Manhattan—Taft 4,788; Bryan 7,168.

ESTIMATED THAT MARSHALL'S MAJORITY WILL BE 20,000

(Continued From Page One.)

grunted heretofore had made up their minds to except Watson and vote the ticket straight rather than take chances on spilling their ballot for Taft. On the other hand the democrats were claiming that these republican voters were still opposed to Watson and were voting the straight democratic ticket rather than run the risk of spoiling their ballot. And each side had something on which to base its claim. This was admitted by all sides.

The saloons were closed tight here and as far as has been learned they were closed all over the state. No trouble has been reported from any place in the state, but the police of this city were looking for it during the evening in some of the wards in which foreigners vote. Thousands of foreigners were naturalized during the last week or two and it was said they would be brought to the polls to vote late in the day.

When the republicans found that rapid voting was being done and that straight tickets appeared to be the rule they brought out considerable money and began betting on Watson. Several bets were made at even money today.

The weather all over the state was reported fine and this helped to bring out a full vote.

Clever Scheme Worked.

A clever scheme was worked here today by some one, presumed to be the democrats. Letters were sent to a large number of colored republicans telling them to select ten of their best workers in their precincts and go with them to room 33, old Board of Trade building to meet Capt. W. E. English, who wished them to do some special work on election day. The letters told them that they would be supplied with the "necessary means" for carrying on the work. As a result fully 500 negroes gathered at the old Board of Trade, only to find that they had been fooled. Mayor Bookwalter and several other well-known republicans had to explain to them that the letters were forgeries and that it was a democratic scheme to get the negroes to come down to be disappointed. When they went to room 33 they found pictures of Taft and Governor Hanly on the wall and the floor strewn with paper bands, such as are used around packages of paper money in banks. Each band marked "50c." This looked promising of course, but there was no money in sight. It was acknowledged to be a clever scheme well worked.

It is not believed that many negroes voted the democratic ticket, though some did. Most of them lined up as they always have done for the republican ticket.

Among the republicans confidence was maintained in the general result as far as the national ticket was concerned. They insisted that Taft will carry the state and that he will be elected. They were also confident of the election of Watson and the rest of the state ticket. But the democrats insisted that the straight ticket voting indicated a landslide for Bryan and were claiming that Marshall will be elected by a large plurality. It was admitted on all sides, however, that the complexion of the legislature could not be forecasted.

(Later Bulletin)
Indianapolis, Ind.—650 precincts out of 3,235 in Indiana give Taft 103,758, Bryan 99,548, Watson 89,071, and Marshall 95,567. On this basis Taft will carry the state by 26,000 and Marshall will win over Watson by 30,000.

Indianapolis—Claims are advanced by the republican state central committee through Carl W. Reddick, at 10:30 tonight, that Taft will carry the state by 20,000 and Marshall by 10,000. The democrats are conceded seven of the thirteen congressional districts. The legislative ticket is very close and probably will be republican.

The congressional districts conceded to the democrats are the second, third, fourth,

fifth, seventh, eighth and twelfth.

The closeness of the results in Indiana is proving a surprise. It had been expected Taft would go through with 40,000 majority and Watson would have clear sailing by a vote of 15,000. The congressional vote is a big surprise.

BULLETIN.
Indianapolis—445 precincts out of 3,244 in Indiana give Taft 76,227, Bryan 74,642 and at this basis Taft will have a plurality of 13,000 and Roosevelt in this district had a plurality in 1904 of 90,000. 425 out of 3,245 give Taft in Indiana, 76,227, Bryan 74,642, Watson 67,234, and Marshall 74,409.

Indianapolis—550 precincts out of 3,245 give Taft, 90,620; Bryan, 83,305; Watson, 79,393; Marshall, 85,767.

Present returns from all sections leave little doubt of the election of Marshall for governor. It is probable that Marion county's democratic ticket will win.

600 precincts in Indiana give Taft, 97,485; Bryan, 94,426; Watson, 84,096; Marshall, 91,300.

BULLETIN.
Indianapolis—Returns now received are almost entirely from the cities where Watson's defeat had been expected. The rural districts may tell a different story. Thirty-four precincts out of forty in Vanderburg county give Watson a lead of 151 votes. The republican legislative ticket is said to be elected. One half the precincts of Bartholomew county show and were voting the straight democratic ticket rather than run the risk of spoiling their ballot. And each side had something on which to base its claim. This was admitted by all sides.

BULLETIN.
Indianapolis—670 precincts in Indiana give Taft 67,570; Bryan, 67,109; Watson, 61,227; Marshall, 68,896.

Indianapolis—250 precincts in Indiana give Taft 57,143; Bryan, 56,582; Watson, 50,666; Marshall, 57,969.

Indianapolis, Ind.—475 precincts in Indiana out of a total of 3,245 give Taft, 82,561; Bryan, 80,354; Watson, 72,473; Marshall, 79,662.

Indianapolis—Reports received by the republican state committee indicate that Clinton county will give Taft a plurality of 350 and Watson 200.

In Delaware county, eleven out of thirty-four precincts gave Taft 2,337, Bryan 1,780, Watson 2,880, Marshall 2,448.

Wayne county reported that Watson will have 2,000 and Taft 3,000.

Reports from Vigo county showed that fourteen out of forty-one precincts gave Taft 4,955; Bryan 5,000. In these same precincts Watson fell far behind receiving 4,529 to Marshall's 6,279.

St. Joseph county will give Taft a plurality of 2,500, and Watson a plurality from 800 to 1,000. Watson ran even with Taft in South Bend.

The Bartholomew county committee reported that ten out of thirty-five precincts gave Taft 2,582, Bryan 2,035, Watson 2,229, Marshall 2,542. The Lake county chairman estimated that Watson will carry Lake by 2,000 while Taft will have 3,000.

Indianapolis, Ind.—900 precincts out of 3,245 in Indiana give Taft, 126,362; Bryan, 123,882; Watson, 111,000, and Marshall, 118,502.

Indianapolis—Grant county with 58 precincts out of a total of 86, Taft, 5,511; Bryan, 4,580; Watson, 5,450, and Marshall, 4,668. In 1904 this county gave Roosevelt, 5,550, and Parker, 4,968.

Indianapolis—425 precincts outside of Marion county give Taft 76,227, Bryan 74,642, Watson 67,234, and Marshall, 74,409. Taft carried Montgomery county by 425 and Marshall by 111. Four years ago Hanly carried this county by 546. It looks like Adair would be re-elected to congress.

Sixteen out of 86 districts in Madison county give Taft 1,207; Bryan 1,204; Watson, 829 and Marshall, 837. Taft and Marshall will receive all the pluralities.

State Chairman Goodrich has just issued the statement that Marshall will carry the state by a small majority and that the Republican state ticket will be defeated. Taft will carry the state by about 3,000.

Indianapolis—800 precincts in state out of 3,245, give Taft, 115,658; Bryan, 114,150; Watson, 101,727; Marshall, 100,068.

Liberty, Ind.—The First and Second precincts of Union county give Taft, 181; Bryan, 121; Watson, 171; Marshall, 132.

Indianapolis, Ind.—At 10 o'clock indications are that Taft has carried Indiana by 3,000 to 5,000; that Marshall (Dem.), has been elected by small majority; that Overstreet has probably been defeated for congress from the Seventh district.

The returns are slow in coming in, and figures are lacking as to the other congressional districts.

give Taft, 62,231; Bryan, 61,905; Watson, 55,124, and Marshall, 52,978.

Bluffton, Ind.—Twelve precincts out of 32 in Wells county give Taft 637; Bryan 1,119.

Wabash, Ind.—Ten precincts out of 38, give Taft 973; Bryan, 717; Watson, 1,098; Marshall, 708. This county in 1904 gave Roosevelt a plurality of 2,935.

Valparaiso, Ind.—Porter county gives Taft, 1,494; Bryan, 1,050; Watson, 1,633; Marshall, 1,263.

BULLETIN.
Indiana—Fifteen precincts out of 45 in Montgomery county, give Taft 2,578; Bryan, 8,646. This county in 1904 gave Roosevelt 900 plurality.

Indiana—Nineteen precincts in Wayne county give Taft 128; Bryan, 58; Watson, 107; Marshall, 79.

BULLETIN.
Indianapolis, Ind., Nov. 3.—State Chairman Goodrich wired National Chairman Hitchcock that Taft will carry Indiana by 15,000.

MARSHALL LEADS BRYAN.
Indianapolis—Out of 34 precincts in Delaware county, Taft has 3,337; Bryan, 1,780; Watson, 2,809; Marshall, 2,448.

Early returns from Vanderburg county indicate Marshall will outrun Bryan.

Tippecanoe county gives Watson a majority of 800; republican loss of 100. Newton county gives Taft a plurality of 650 against a republican plurality of 355.

Grant county has returned but one precinct which gives Watson a majority of two votes.

Indications are that Taft will carry Marion county by 2,000.

Taft carries St. Joseph county by 2,500 and Watson the same by about 800.

Vigo county gives Marshall a plurality of about 1,000. Bryan is leading also.

Twenty precincts out of 40 in Vanderburg county give Taft 4,080; Bryan, 3,341; Watson, 3,980; Marshall, 3,820.

In Grant county out of 36 precincts, give Taft, 2,582; Bryan, 2,035; Watson, 2,225; Marshall, 2,542.

Overstreet appears possibly defeated in the Seventh district.

Indications are democrats will carry entire Marion county ticket.

Terre Haute.—Twenty-five precincts Vigo county, city of Terre Haute—Taft 5,706; Bryan, 5,728; Watson, 4,200; Marshall, 7,555.

Indianapolis—14 out of 41 precincts in Vigo county gave Taft 4,955; Bryan 5,000; Watson, 4,529, and Marshall, 6,278.

Indianapolis—115 precincts out of 138 in Marion county gave Watson 27,072; Marshall, 30,946. Sullivan county gives Bryan the plurality by 1,300, and for Marshall, 1,400. This county was carried two years ago by the Democrats with a total of 600.

Indianapolis—200 precincts in Indiana give Taft 44,113 and Bryan 44,276; Watson 38,141 and Marshall 44,341. 110 precincts in Marion county give Taft 28,196; Bryan 28,444.

BULLETIN.
Indianapolis—Republicans at headquarters give Marion county to Marshall by 4,000.

BULLETIN.
Indianapolis—160 precincts in Indiana give Taft 36,128; Bryan, 35,625; Watson, 31,224; Marshall, 35,650.

In 1906 the state election in Marion county gave a republican plurality of 5,000. On returns from 90 precincts in the county the republican plurality will be wiped out. Taft and Marshall republicans are in evidence throughout the state.

BULLETIN.
Indianapolis—Indications are that Marshall will carry Marion county.

The state democratic committee claims Bryan will pull through in the state. The claim is made, also, the democrats will carry Marion county for all offices. In Monroe township Marshall beats Watson by 160 votes.

In ten precincts in Montgomery county Taft's vote is 2,042 and Bryan's 1,893.

Three precincts in Franklin county give Bryan a plurality of 13 and Marshall 15.

BULLETIN.
Indianapolis—Chairman Goodrich has a dispatch from Frank Hitchcock saying Taft will carry New York.

Indianapolis—Sixty-two precincts in Indiana, give Watson 15,542; Marshall, 16,842. The democratic gain over two years ago is 2,640.

Indianapolis, Ind.—Forty precincts in Indianapolis heard from by the democratic committee, give Taft, 9,796; Bryan, 8,953. The first twenty-five precincts out of 138 in Marion county, give Bryan, 5,984; Taft, 6,087, a net democratic gain of 775. At this rate Taft will carry Marion county by about 500. Taft and Marshall are running close together on the vote.

Indianapolis—Marion county, thirty-one precincts, Taft, 7,018; Bryan, 7,569; Watson, 7,388, and Marshall, 8,363.

The Narcotic Of Life.
Infants and children are constantly needing a laxative. It is important to know what to give them. The stomach and bowels are not strong enough for salts, purgative waters or cathartics, powders or tablets. Give them a gentle, healthy, laxative tonic like Dr. Cassell's Syrup Pepsin, which sells at the same price as a great remedy for you to have in the house.

Indianapolis—400 precincts in Indiana give Taft 73,837; Bryan 73,462; Watson 65,442; Marshall 72,769.

Indiana—300 precincts in Indiana,

Wayne County Vote

	President		Governor		Congress		Representative		Prosecutor	
PRECINCTS	Bryan (D.)	Taft (R.)	Marshall (D.)	Watson (R.)	Kuhn (D.)	Barnard (R.)	Cook (D.)	Keliff (R.)	Allen (D.)	Ladd (R.)
ington No. 1.										
oston No. 1.										
enter No. 1.	47	111	54	101	53	103	61	90	65	81
enter No. 2.										
enter No. 3.	95	109	103	101	107	94	108	90	106	99
ay No. 1.										
ay No. 2.										
alton No. 1.	26	116	27	110						
runklin No. 1.	30	93	32	91	31	87	30	88	36	83
runklin No. 2.										
reens No. 1.	62	201	67	194						
reene No. 2.	32	89	32	89	33	87	32	86	37	87
arrison No. 1.	37	75	42	68	38	73	41	69	40	66
ackson No. 1.										
ackson No. 2.	61	125	67	123	62	124	57	125	66	110
ackson No. 3.	110	104	118	91	118	86	118	81	109	90
ackson No. 4.										
ackson No. 5.										
ackson No. 6.	89	88	95	83						
offerson No. 1.										
offerson No. 2.										
ew Garden No. 1.	49	125	52	119	49	118	48	109	62	100
ew Garden No. 2.										
ashington No. 1.	80	71	81	72	84	68	84	63	84	66
ashington No. 2.	67	51	66	52	70	49	73	45	70	44
ashington No. 3.										
ebster No. 1.	58	102	86	68						
ayne No. 1.	88	109	102	93	84	104	97	91	97	90
ayne No. 2.	36	77	38	73	42	72	48	70	40	70
ayne No. 3.	10	60	11	58	13	56	14	53	16	55
ayne No. 4.										
ayne No. 5.	67	142	86	121						
ayne No. 6.	132	83	157	58						
ayne No. 7.	72	135	92	116	87	123	106	103	96	100
ayne No. 8.										
ayne No. 9.	143	40	153	31	144	43	145	32	128	50
ayne No. 10.	91	78	94	52						
ayne No. 11.	56	96	72	82						
ayne No. 12.	46	48	56	46	49	54	51	48	45	50
ayne No. 13.	52	85	71	63	56	75	63	65	52	70
ayne No. 14.	55	116	67	108	66	110	65	103	59	111
ayne No. 15.										
ayne No. 16.										
ayne No. 17.	59	87	73	80	65	83	77	68	71	70
ayne No. 18.										
ayne No. 19.	55	129	79	107	71	115	75	108	63	112
ayne No. 20.	71	84	50	121						
ayne No. 21.										
ayne No. 22.										
ayne No. 23.	132	107	168	76	147	87	161	72	130	106
ayne No. 24.	62	162	84	142	82	143	96	123	90	133
ayne No. 25.	59	101	75	92						
ayne No. 26.	80	192	103	165	98	168	111	146	102	160
ayne No. 27.										
ayne No. 28.										
ayne No. 29.	44	195	72	161	63	143	80	153	86	150
ayne No. 30.										
ayne No. 31.	55	130	70	112	60	124	75	102	81	100
ayne No. 32.	72	135	92	116						
ayne No. 33.	68	144	91	120	73	142	90	117	85	120
ayne No. 34.										
ayne No. 35.	59	105	45	92	67	103	74	89	64	90
Total.										
Plurality.										