

## DO YOU GET UP WITH A LAME BACK?

Kidney Trouble Makes You Miserable.

Almost everybody who reads the newspapers is sure to know of the wonderful cures made by Dr. Kilmer's Swamp-Root, the great kidney, liver and bladder remedy. It is the great medical triumph of the nineteenth century; discovered after years of scientific research by Dr. Kilmer, the eminent kidney and bladder specialist, and is wonderfully successful in promptly curing lame back, kidney, bladder, uric acid troubles and Bright's Disease, which is the worst form of kidney trouble.

Dr. Kilmer's Swamp-Root is not recommended for everything but if you have kidney, liver or bladder trouble it will be found just the remedy you need. It has been tested in so many ways, in hospital work, in private practice, among the helpless too poor to purchase relief and has proved so successful in every case that a special arrangement has been made by which all readers of this paper who have not already tried it, may have a sample bottle sent free by mail, also a book telling more about Swamp-Root and how to find out if you have kidney or bladder trouble. When writing mention reading this generous offer in this paper and send your address to Dr. Kilmer & Co., Singhamton, N. Y. The regular fifty cent and dollar sizes are sold by all good druggists.



## Do You Want to Know

about the most delightful places in this country to spend Summer?

A region easy to get to, beautiful scenery, cool breezes, good hotels, good fishing, golf, something to do all the time—economical living, rest, health and comfort.

Then write today, (enclosing two-cent stamp to pay postage) mention this paper and we will send you our 1904 edition of

**'Micigan in Summer,'**  
containing 64 pages, 200 pictures, maps, hotel rates, etc., and interesting information about this famous resort region reached via the

**Grand Rapids & Indiana R'y**  
"THE FISHING LINE."

PETOSKEY WEQUETONING  
BAY VIEW MAC KINACID  
NORTHPORT WAUKEON LAKE  
HARBOR ET WATKINS CITY  
CROOKED LAKE

A fine train service, fast time, excellent dining cars, etc., from St. Louis, Louisville, Indianapolis, Chicago.

**C. L. LOCKWOOD,**  
GEN. PASSENGER & TICKET AGT  
Grand Rapids, Mich.

## Low Fares to California via Pennsylvania Lines During September.

Aug. 15 to 27, inclusive, and Aug. 28 to Sept. 9, inclusive, excursion tickets to San Francisco and Los Angeles, account Triennial Conclave Knights Templar, and Sovereign Grand Lodge, I. O. O. F., will be sold via Pennsylvania Lines. For full particulars regarding fares, routes, etc., apply to local Ticket Agent of those lines, or to W. W. Richardson, District Passenger Agent, Indianapolis, Ind.

"Crisp and Cracker" a biscuit that will please the most skeptical. Try a package of the Famous, only 10c.

Hundreds of lives saved every year by having Dr. Thomas' Electric Oil in the house just when it is needed. Cures croup, heals burns, cuts, wounds of every sort.

## RICHMOND LAWNS

Would take on a beautiful green if Mertz's Bone Fertilizer were used now. Send or telephone your orders to Tom Mertz. Both 'phones 103, or Rural Route No. 8. Send in an order for a sample if you want your grass to grow well next summer.

## "The Way to Go."

Every Sunday, excursions via the Dayton & Western to Soldiers' home and Dayton, \$1.00. Trains every hour. Go away time you wish. A clean and cool Sunday outing. No smoke, no cinders, no dust.

Nothing can take the place of a vacation passed at the seashore. A special opportunity to enjoy twelve days' outing at the most attractive summer havens along the Atlantic Coast is offered by the Pennsylvania Lines. Seashore Excursion, August 11th. Round trip fare \$14.00 from Richmond to Atlantic City, Cape May, Holly Beach, Avalon, Anglesea, Wildwood, Sea Isle City, Ocean City, New Jersey; Ocean City, Maryland; Rehoboth, Delaware. Proportionately low fares from other Pennsylvania Lines stations.

The pleasure of the midsummer outing to these famous seaside resorts is enhanced by the opportunity to visit Philadelphia, where stop-over will be allowed on return coupon of Seashore excursion tickets. C. W. Elmer Ticket Agent, Pennsylvania Lines, Richmond, Ind., will furnish further information.

## THE CIRCUS IS HERE TODAY

BARNUM & BAILEY'S ARRIVED  
IN THE CITY.

## UNUSUAL SIGHTS

Are Seen—Sections Arrived Early  
This Morning—North Nineteenth  
Street the Place.

Today is circus day. Everybody, young and old, looks upon it with a feeling totally different from that which they have for the Fourth of July or other holidays. Everything is laid aside and all turn their steps eirensward. The factories shut down for the day to give their employees a chance to visit the show, and every clerk whose relatives have not died on baseball days, finds he has to attend the funeral of somebody closely related to him today.

That there were many hundreds of country people in to "see the show" this afternoon. This is one day. All others in the year are practically the same, but this is different, in a way.

About four o'clock this morning, just as day was breaking, a long train of gaudy coaches, bearing gaudy wagons, pulled in from the East and stopped at North Twelfth street. Slowly, and with many yawns and grunts, one by one, numbers of men, half dressed and not yet half awake, dropped from the wagons and sundry other sleeping places, grinned at the youngsters who were up that early and waiting, and then, with many shouts, set to work unloading the paraphernalia of the show. The circus had come. In some unknown telephatic way in about five minutes it was known everywhere that "the show was in," and persons of all sizes hastened to the scene. In about fifteen minutes the few, probably a hundred, people who had been waiting were swelled to a large number, which increased at each minute. The elephants and animals and everything were viewed with great eagerness, by the crowd, which soon divided in two parts, one following the wagons to the circus grounds, and the other preferring to wait and view the rest of the wonders.

Thousands of wondering people stood around watching the unloading in one part, and the rapid, swift setting-up of the great tents in another. About half past ten the parade begun. Throughout its whole line of march the sidewalks were thronged with people, who hastened home for a bite to eat and then away to the show grounds, at twelve o'clock or earlier. The sight of eager youngsters dragging unwillingly or more staid parents and relatives was a common one at that hour and by one a steady stream was pouring eastward.

Numbers have come in from the surrounding cities to attend the circus and today the population of Richmond is augmented by several thousand.

## What to do Until the Doctor Arrives.

If it is a case of colic or cholera morbus give Chamberlain's Colic, Cholera and Diarrhoea Remedy and you will have no need of a doctor. For sale by A. G. Lukens & Co., and W. H. Sudhoff, Fifth and Main Sts.

## THE MARKETS

### Wheat Market.

(Price paid by the Richmond Roller Mills.)  
Wheat—  
No. 2, \$1.05.  
Inferior, 56 lbs. to bushel, 95c up.  
Corn—  
No. 2, 56 lbs. (shelled) to bushel 50c.

### Grain Prices.

(Paid by Wm. Hill.)  
Timothy, new, baled, \$13.  
Timothy, \$11 to \$12.  
Clover, baled, \$10.  
Clover, loose, \$9.  
Clover seed, \$5.00 to \$6.00 per bu.  
Oats 40 to 43c per bu.  
Corn, 53 to 55c per bu.  
Wool, 26 to 22c lb.  
Straw, \$7 to \$8.

### Provisions at Retail.

(Paid by Beehive Grocery.)  
New cabbage, 5c per pound.  
Old chickens, 18c per pound.  
Eggs, 17c per dozen.  
Country butter, 20c to 25c per lb.

Creamery butter, 30c per pound.  
Bananas, 10 to 20c per dozen.  
Apples, 30c to 50c per peck.  
Spinach, 10c lb.  
Radishes, 5c bunch.  
Tomatoes, 10 and 15c quart.  
Onions, 5c bunch.  
Cal. Oranges, 25 to 50c dozen.  
Lemons, 20 to 30c dozen.  
Maple syrup, \$1.25 per gallon.  
Rhubarb, 5c a bunch.  
Asparagus, 5c bunch.  
New Potatoes, 50c peck.  
New beets, 10c bunch.  
Green beans, 15c 1-4 peck.  
Green peas, 15c per 1-4 peck.  
Pineapples, 15 to 25c.

### Meats at Retail.

(Furnished by P. J. Miles.)  
Beef, 8 to 15c per lb.  
Rib roast, 15c per lb.  
Chuck roast, 10 to 12 1-2c per lb.  
Beef to boil, 8 to 10c per lb.  
Beef steaks, 15c to 18c lb.  
Fresh pork, 10 to 12 1-2c lb.  
Pork chops, 12 1-2c per pound.  
Bacon, 15 to 20c lb.  
Roast pork, 12 1-2c lb.  
Veal, 12 1-2 to 20c lb.  
Smoked ham, 15 to 25c lb.  
Lamb, 15 to 25c lb.  
Fish, 8 to 15c lb.  
Lard, 10c lb.  
Fresh sausage, 12 1-2c lb.  
Smoked sausage, 12 1-2c lb.

### Country Produce.

(Prices paid by Beehive Grocery.)  
Eggs, 14c dozen.  
Butter, Creamery 23c lb.; country, 16c lb.

### Poultry Prices.

(Paid by the Bee Hive Grocery.)  
Dressed, old chickens, 12 1-2c lb.

### Richmond Livestock.

(Prices Paid by Long Bros.)  
Hogs, 200 lbs. top, heavy, \$4.45 cwt.

Hogs, 400 lbs., common and rough, 3 to 4c lb.

Choice butcher steers, 5c lb.  
Choice cows, 3 to 3 3-4c lb.  
Cows, 2 1-2 to 3 1-2c lb.  
Veal calves, 4 and 4 1-2c lb.  
Sheep, fine extra, 5c per lb.  
Lams, 7 to 8c lb.

### SAFE AND SANE.

(New York World.)

Whoever may be nominated for president at St. Louis it is certain that he will be a representative of safe and sane Democracy—if the majority shall exercise its undoubted and rightful power.

The votes pledged to Judge Parker represent only a part of the conservative strength of the convention. The supporters of Gorman, Olney, Wall and Gray, and the friends of Cleveland are as much opposed to the rule-of-ruin policy of Mr. Bryan as are the advocates of Judge Parker. Nearly all the uninstructed delegates are in favor of a campaign of sanity and good hope.

When these elements unite they can nominate Judge Parker, or a Democrat of his type, if not under the two-thirds rule, then by the adoption of a Democratic majority rule. When conspirators combine to enforce minority rule, either as to committees, platform or nominations, it will be the duty of those representing the majority to unite to give effect to the dominant Democratic sentiment of the country.

The question as to the convention has narrowed itself to this: Shall the majority or the minority rule? Shall the party have a sane and safe ticket and platform, or another campaign of lunacy and disaster?

Special Low Rates to Cincinnati via C. C. & L., on account of the annual meeting of the Grand Lodge of Elks. Rate, \$2.15 for the round trip. Selling dates July 16, 17 and 18; tickets good returning July 15th. C. A. BLAIR, Ticket Agent.

## KEEPING TAB. WITH MARKER

CENTRAL UNION TELEPHONE  
CO. HAVE AN INSTRUMENT.

## CHECKING OVERTIME

On the Long Distance Phones—One  
in Use in the Local Exchange.

"Hello, two minutes overtime." This remark, delivered in a gentle tone by a gentle-voiced girl has frequently produced anything but a feeling of appreciation of the aforesaid voice, as it means that a long distance telephone conversation has been prolonged beyond the time specified in the telephone book.

The chances are that the sweet-voiced telephone operator is right, although the overtime charge is often violently disputed by the user. For the girl does not depend upon her memory but the time consumed in the conversation is accurately kept by an instrument especially designed for the purpose and which "cannot lie."

In the local exchange of the Central Union Telephone company, one of these little markers is in use on all long distance calls. The machine is somewhat on the same principle as the mail markers on hotel desks, except that the telephone marker records the fractions of a minute.

When a long distance call is received at the Central Union exchange and the desired connection is secured the operator stamps a ticket and the time on which the call begins. When the receivers are hung up the ticket is again stamped and the second stamping shows, without further calculation, just how many minutes and seconds have elapsed since the conversation began. If the time has exceeded that specified in the rate list the operator notifies the party to whom the call has been charged. It is sometimes difficult to convince the party that his little confab over the wire has continued so long but the operator is fortified by the evidence of her marker and is usually able to mollify the aggrieved users.

## CASTORIA.

Bears the Signature of *Cast H. Peterson*

\$14 Round Trip to Atlantic City, Aug. 11, via Pennsylvania Lines.

This summer's excursion to Atlantic City, Cape May and eight other ocean resorts will leave Richmond Thursday, August 11th. Twelve days outing. Stop-over at Philadelphia. See C. W. Elmer, Ticket Agent Pennsylvania Lines, Richmond, Ind.

## Map of the World.

A beautiful map, valuable for reference, printed on heavy paper, 42x64 inches, mounted on rollers; edges bound in cloth, showing our new island possessions. The Trans-Siberian Railway, Pacific Ocean cables, railway lines and other features of Japan, China, Manchuria, Korea and the Far East. Sent on receipt of 25 cents in stamps by W. B. Kniskern, P. T. M., Chicago—North-Western Railway, Chicago, Ill.



There are catsups and also a "bmato" catsup. Columbia, "The Uncolored Catsup," has Nature's color and flavor. Other catsups are dyed with coclinal, coal tar, etc.

COLUMBIA CONSERVE COMPANY.

## THE GRAHAM & MORTON TRANS. CO.

### Summer Time Card.

Benton Harbor-St. Joseph Division.		
Leave Chicago	Arrive St. Joseph	Ar. Benton Harbor
9:30 a. m. daily	1:30 p. m. daily	2:30 p. m. daily
12:30 noon daily	4:30 p. m. daily	5:30 p. m. daily
Sat. & Sun. ex.	Sat. & Sun. ex.	
11:30 p. m. daily	4:00 a. m. daily	5:30 a. m. daily
inc. Sunday		
10:00 a. m. Sunday only	2:00 p. m. Sunday only	
2:00 p. m. Saturday only	6:00 p. m. Saturday only	7:30 p. m. Saturday only
8:00 p. m. Sat. only during July & August	12:00 midnight leave at once for Holland	
Lv. Benton Harbor	Leave St. Joseph	Arrive Chicago
	5:00 p. m. daily	9:00 p. m. daily
7:00 a. m. daily	7:30 a. m. daily	11:30 a. m. daily
Sunday ex.	Sunday ex.	Sunday ex.
	6:00 p. m. Sunday only	10:00 p. m. Sunday only

Daily excursions to the greatest fruit belt in the U. S., leaving Chicago 9:30 a. m., arrives back in Chicago on return at 9 p. m., the tourist having about three and one-half hours to visit points of interest. Fare for this round trip \$1.00.

Leave Chicago	Ar. Ottawa Beach	Arrive Holland
9:00 a. m. daily	3:30 p. m. daily	4:30 p. m. daily
Sat. & Sun. ex.	Sat. & Sun. ex.	Sat. & Sun. ex.
8:00 p. m. daily	3:00 a. m. daily	6:00 a. m. daily
Sunday ex.	Sunday ex.	Sunday ex.
10:00 a. m. Sunday only	5:00 a. m. Monday only	6:00 a. m. Monday only
1:30 p. m. Saturday only	7:30 p. m. Saturday only	8:00 p. m. Saturday only
Leave Holland	Lv. Ottawa Beach	Arrive Chicago
9:00 a. m. daily	10:00 a. m. daily	5:00 p. m. daily
9:00 p. m. daily	11:00 p. m. daily	6:00 a. m. daily

\*On Sunday above Steamer goes via St. Joseph. Fare to Holland \$1.00; round trip \$2.75. This is the most direct and quickest route to Grand Rapids and all Central and Northern Michigan. Agents for the People's Transit Co., to White hall, Montague, Pentwater and Ludington, daily 7:30 p. m. The right is reserved to change this schedule without notice. J. S. MORTON, Sec'y & Treas. J. H. GRAHAM, Pres. M. MEYER, G. P. & F. A. Chicago Dock, foot of Wabash Ave. Telephone 2162 Central. B. H. 6-25-04

## PIANOS FOR SALE PIANOS FOR RENT PIANOS MOVED PIANOS TUNED

BOTH PHONES 346  
STARR PIANO CO. 935 Main St.

J. S. BRUMLEY Bills Distributed---  
J. Phone 312 No. 178, 6th WORK GUARANTEED. RATES REASONABLE

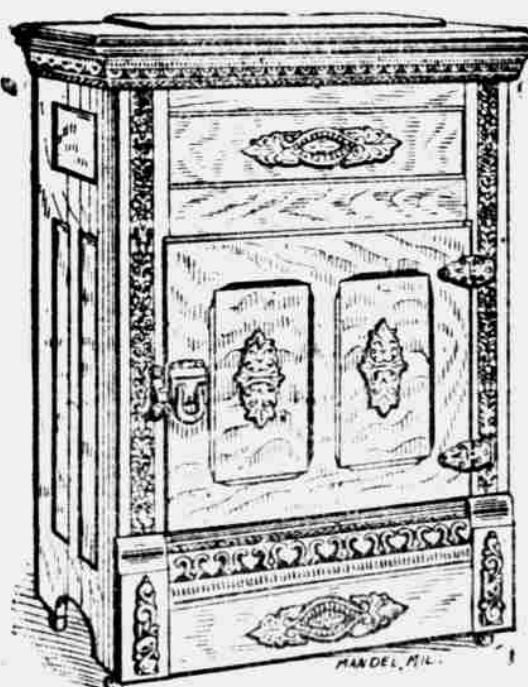
The Northwestern Mutual Life Ins. Co  
Milwaukee, Wis. J. O. BARBER, General Agent, Room 4 and 7 Kelly Bldg Richmond, Ind.

## Refrigerators...

## Ice Boxes

The Best Made

Gurney and Eureka  
Consume But Very Little  
Ice. Easily Kept Clean---  
Sweet---Sanitary...



JONES HARDWARE CO.

## TIME TABLE.

On Sundays Cars Leave One Trip Later.

First car leaves Richmond for Indianapolis at 5 a. m.  
First car leaves Dublin for Richmond at 5 a. m.  
Every car for Indianapolis leaves Richmond on the odd hour, from 5:00 a. m. to 7:00 p. m.  
First car leaves Indianapolis for Richmond at 7:00 a. m. and every other hour thereafter until 5:00 p. m.  
Hourly service from Richmond to Dublin and intermediate points, from 5:00 a. m. to 11:00 p. m.  
Subject to change without notice.

## RATE OF FARE.

Richmond to Graves .. \$0.05  
" to Centerville .. . 10  
" to Jackson Park .. . 15  
" to Washington Rd .. 20  
" to Germantown .. . 25  
" to Cambridge City .. 30  
" to Dublin .. . 35  
" to Indianapolis .. 1.05