

J. W. HORTON,
DENTAL SURGEON.
RENSSELAER, IND.
All who would preserve their natural teeth should give him a call. Special attention given to filling teeth. Gas or vitalized air for painless extraction. Over LaRue Bros.

B. WASHBURN,
PHYSICIAN AND SURGEON.
RENSSELAER, INDIANA.

Special attention given to diseases of the eye, ear, nose and throat, and diseases of women. Tests eyes for glasses and treats rupture by the injection method.

J. C. THRAWLS,
Surveyor and Engineer.

Office with the County Superintendent, in Williams & Stockton's block, Rensselaer. 3-23-94

P. MITCHELL,
Attorney at Law,

Practices in all the courts of Indiana and Illinois. Real estate bought and sold. Agent for one of the best Life Insurance companies on the globe—The North-western National Aid of Chicago. **FAIR OAKS, IND.**

JAMES W. DOUTHIT,
LAWYER,
RENSSELAER INDIANA

MORDECAI F. CHILCOTE,
ATTORNEY AT LAW,
Rensselaer, Ind

Attends to all business in the profession with promptness and dispatch. Office in second story of the Makeever building.

W. S. PARKS,
DRAYMAN.

All kinds of hauling done in the most careful and prompt manner. Prices the very lowest.

New Meat Market
CREVISTON BROS.

Shop located opposite the public square. Everything fresh and clean. Fresh and salt meats, game, poultry, etc. Please give us a call and we will guarantee to give you satisfaction. Remember the place. Highest market price paid for hides and tallow.

ADDISON PARKSON, GEO. K. HOLLINGSWORTH,
President. Vice President.
EMMET L. HOLLINGSWORTH, Cashier.

Commercial State Bank,
RENSSELAER, INDIANA.
Directors: Addison Parkson, James T. Randle, John M. Watson, Geo. K. Hollingsworth and Emmet L. Hollingsworth. This bank is prepared to transact a general banking business. Interest allowed on time deposits. Money loaned and good notes bought at current rates of interest. A share of your patronage is solicited. Are open for business at the old stand of the Citizens' State Bank.

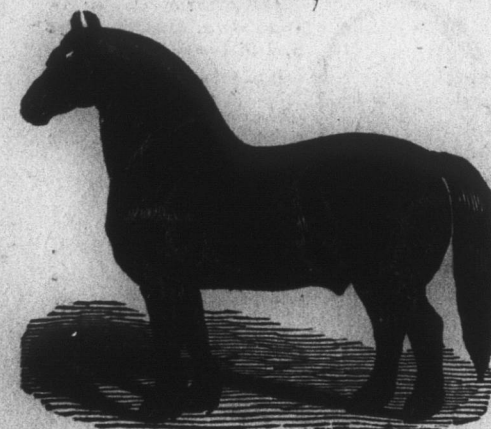
Alfred McCoy, Pres. T. J. McCoy, Cash.
A. R. Hopkins, Assistant Cashier.
A. MCCOY & CO'S BANK
RENSSELAER, IND.
The Oldest Bank in Jasper County.
ESTABLISHED 1854.

Transacts a general banking business, buys notes and loans money on long or short time on personal or real estate security. Fair and liberal treatment is promised to all. Interest paid on time deposits. Foreign exchange bought and sold. Your patronage is solicited. Patrons having valuable papers in deposit them for safe keeping.

H. L. BROWN, D. D. S.

DENTIST.
Gold Fillings, Crown and Bridge Work. Teeth Without Plates a Specialty. Gas or vitalized air administered for the painless extraction of teeth. Give me a trial. Office over Porter & Wisard's.

Thoroughbred French Draft
Stallion,



La Grande,
(Black.)
Weight 1,700 pounds; Season '96

Cleveland Bay Stallion,

SHINE,

Weight 1,350 pounds; Season '95
Will be found at Hemphill's barn on river bank, Rensselaer, Indiana.

C. C. BROWN, Owner.
WILL COLLINS, Keeper.

THURSTON'S
CORDIAL
Is a safe and prompt remedy for the cure of dysentery, cholera, cholera morbus and all forms of Summer Complaints and looseness of the bowels. It is pleasant to take and especially useful for children.
For sale in Rensselaer by Frank Meyer.

THE AMERICAN PEOPLE'S MONEY.



Read Ignatius Donnelly's new and greatest book, "THE AMERICAN PEOPLE'S MONEY," price 25 cents. Given FREE to subscribers of THE PEOPLE'S PILOT who pay \$1 on their account. Also free to all new trial subscribers who pay 25 cents for three months.

ALLIANCE WORK.

Directory
OF THE
INDIANA FARMERS' ALLIANCE
AND INDUSTRIAL UNION.

J. W. APPLE, President, Oaklandon.
THOS. G. LAY, 1st Vice-Pres., Corvett.
LOLA VINCENT, Sec'y-Treas., Indianapolis.
C. VINCENT, Lecturer-Organizer, Indianapolis.

EXECUTIVE COMMITTEE.

N. W. WEBSTER, Chairman, Cicero.
L. A. STEPHENS, Secretary, Anderson.
A. G. BURKHART, Treasurer, Tipton.

DEGREE LODGE, N. A. A. No. — BENE-
ficiary Department F. A. & I. A., meets
on the second and fourth Saturday nights of
each month at the Centre School House in
Union township, Jasper County, Ind.

CENTER ALLIANCE, No. 75, JASPER
County, meets regularly every second and
fourth Saturday nights at Centre School
House, Union township, GEO. CASEY,
Secretary.

Time Card.

The Indiana State F. A. and I. U. will meet in annual session, the second Wednesday in Dec. 1895.

National Alliance Aid.

This is the title of the aid degree of the F. A. and I. U., and is the most perfect and economical insurance yet devised. It carries out fully the fraternal features of the order. The expenses are as follows:

Membership Fee.
\$1,000 single policy \$3.00
\$2,000 single policy 6.00
\$1,000 joint policy 1.50
\$2,000 joint policy 3.00
Registry fee, single policy 1.00
Registry fee, joint policy 1.50

Annual dues, single policy, 50 cents per \$1,000; annual dues, joint policy, 75 cents per \$1,000.

In all cases where application is rejected all money paid on membership fee and advance assessment shall be returned or held subject to applicant.

Joint policies are limited to husband and wife, and loss payable to the survivor.

Single Policy | **Joint Policy**
Age. Assessment. Age. Assessment.
18 to 25 \$1.00 18 to 25 \$1.50
25 to 30 1.10 25 to 30 1.65
30 to 35 1.20 30 to 35 1.80
35 to 40 1.35 35 to 40 2.05
40 to 45 1.50 40 to 45 2.25
45 to 48 1.75 45 to 48 2.45
48 to 50 2.00 48 to 50 3.00

After joining, assessments do not increase in amount with increasing age.

Assessments are officially ordered six times a year, viz: Jan. 1, March 1, May 1, July 1, Sept. 1 and Nov. 1

Can I join the aid degree without joining the Alliance? Certainly not. You would not ask to become a 32d degree mason without passing through the lower degrees. Just so, you cannot join the second degree of the Alliance without first becoming a member in the regular way. Organize an Alliance and then form an Aid Degree lodge. Parties can write to C. Vincent at Indianapolis or James Welsh at Rensselaer regarding the establishment of a Degree lodge and we hope the farmers will generally engage in this work.

The fraternal orders furnish the cheapest kind of life insurance in the world, and the farmers live longer than other classes, accordingly the death rate is lower than in other occupations—therefore, it naturally follows that life insurance furnished in our own order will be cheaper than in any other order—the cheapest in the world. The following counties in Indiana are now represented in the Aid Degree: Boone, DeKalb, Green, Hamilton, Henry, Madison, Marion and Tipton.

Ladies' 75 cent slippers 50 cents a pair. Saturday, Model.

Comparative Cost of Life Insurance.

Official reports show for 1893 the following in regard to the three classes of life insurance in the United States.

Fraternal Societies, including the National Alliance Aid, have 1,801,000 members, carrying \$3,000,000,000 in risks; paying \$31,000,000 in losses, at an expense of \$2,413,000, or a total average of \$9 for every \$1,000 insurance carried, of which only 62 cents per \$1,000 was used for expense.

Ordinary Assessment Companies had 1,676,000 members, carrying \$4,170,000,000 in risks, paying \$28,655,000 in losses, with \$18,305,000 for expense; or total cost per \$1,000, of \$11.70, of which \$4.50 went for expenses.

Old Line Companies had 1,167,000 members, carrying \$3,213,000,000 of risks, paying \$57,192,000 at an expense of \$48,636,000 or total cost of \$32 per \$1,000 carried, of which \$10.34 went to pay the expense!!

You pay your money and take your choice. The expense of conducting the old line company is more than the entire cost of Insurance in the Fraternal Society.

Creamery Notice.

The creamery company has decided to commence making cheese May 15th. Will make full cream cheese and sell them at 3 lbs. for 25c or 8½c for whole cheese to patrons and any others. A. McCoy & McDonald, at Marlboro, have a supply of fresh cows; will sell on time or exchange for dry cows on equitable terms. The creamery is here to stay and darning is a sure thing, makes monthly cash returns, makes patrons independent by keeping them constantly supplied with pocket change. More anon. **A. MCCOY, PRES.**

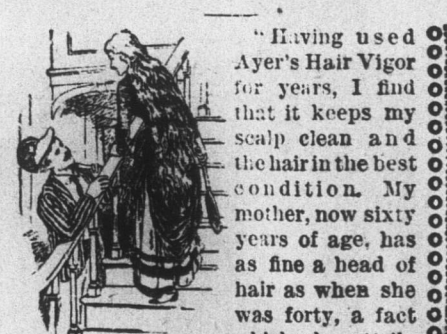
Give Us Government Banks.

The issue is squarely drawn between the people and the banks. As to money, shall it be based upon bank credit, or upon the credit of the nation—the people's wealth? As to the deposit and security and loan distribution of the people's several surplus savings, or token credit, money, shall its safe keeping and judicious, careful loan distribution be undertaken and guaranteed by irresponsible banking corporations, or by the people themselves, in their sovereign capacity, as a co-operative banking corporation, through governmental agencies? Give us government banks.

Cannot be Improved!

So **MRS. F. E. BAKER,**
of **Calveston, Tex.,**
—SAYS OF—

AYER'S HAIR VIGOR



"Having used Ayer's Hair Vigor for years, I find that it keeps my scalp clean and the hair in the best condition. My mother, now sixty years of age, has as fine a head of hair as when she was forty, a fact which she attributes to the use of Ayer's Hair Vigor. It thickens the growth of the hair and restores gray hair to its original color. I cannot see how this preparation could be improved."—Mrs. F. E. BAKER, Calveston, Texas.

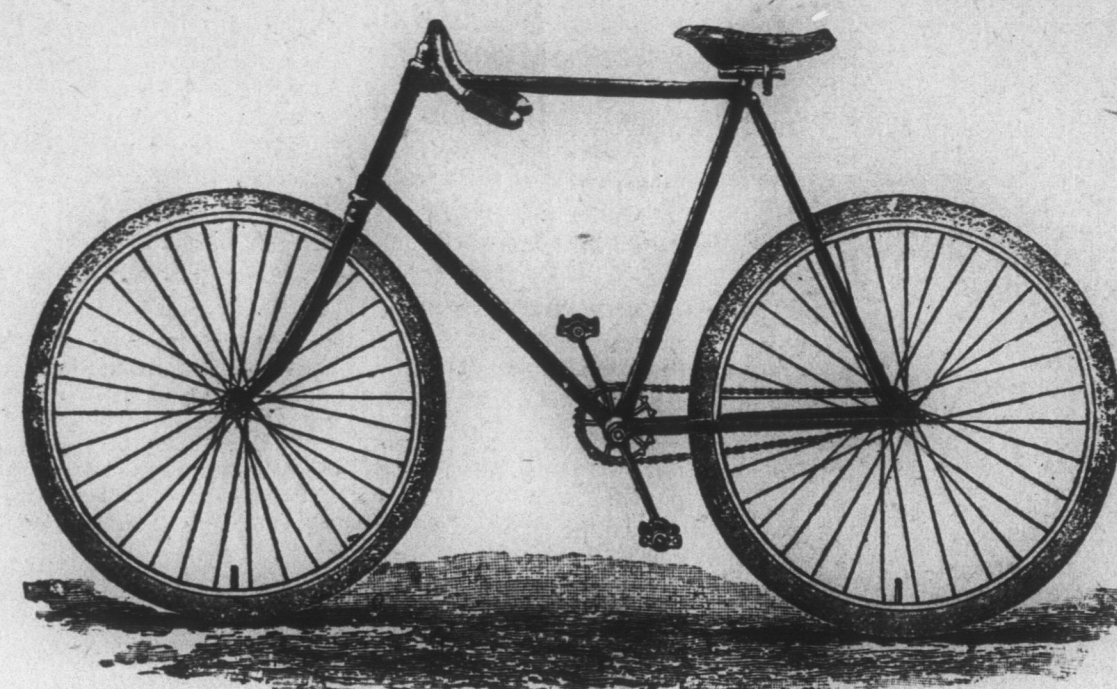
Ayer's Hair Vigor
PREPARED BY

DR. J. C. AYER & CO., LOWELL, MASS.

THE MYSTIC CYCLE.

Highest Grade Bicycle.

Both Ladies' and Gents' Wheels on
Exhibition or Ready for Delivery
every at The People's Pilot
Office. Examine Them.



Descriptive Specifications.

In presenting our '95 model to the public, we wish to impress the fact that the Mystic is not one of the many diamond frame bicycles with which the market is now flooded, and which can be bought at almost any price. On the contrary, the Mystic is one of the finest lined, most symmetrical and highly finished machines at the disposal of intending purchasers.

THE FRAME, in general appearance, is very pleasing and perfectly constructed on the latest and approved models.

LARGE TUBING, of light gauge, is used throughout, and every joint reinforced.

EVERY PART is made of the finest steel.

OUR MECHANICS are the best in the world.

OUR MACHINERY is perfect.

OUR STOCKHOLDERS are men of integrity.

THE HEAD is 34 inches in length, of large diameter, light and rigid.

WHEEL BASE, 44 inches. Depth of frame, 23 inches (unless otherwise ordered), which is the standard depth for the average rider. This brings the top tubes and rear fork tubes on a level and parallel with each other, which is a pattern of neat appearance.

THE TUBING is of the very best cold drawn seamless steel stock, produced from the finest quality Open Hearth Crucible Swedish Ingot.

ALL SOLID PARTS are of the best quality steel, accurately machined and fitted.

THE BEARINGS are the best procurable. Bearing cases and cones are of highest grade steel, perfectly hardened and accurately fitted.

THE BALLS are of the best, made by the latest Rolled Forged Method, and are the most perfect produced.

THE SPOKES are the best Swaged Piano Wire Steel, capable of sustaining an enormous high tension.

THE SPROCKETS are of the highest grade Drop Forgings, accurately machine-milled to fit chain. Front sprocket is light, yet very strong and rigid.

REAR SPROCKET is detachable.

FINISH consists of three coats of best jet black enamel, baked on at a high temperature, all brush work (not dipped). Each coat, except last, is carefully rubbed down with felt and pumice stone, which imparts to the last coat that handsome iridescent finish so greatly admired.

ALL BRIGHT PARTS are highly polished and given a heavy copper-plate, then repolished and nickel-plated. This prevents rustings and gives an elegant "solid" finish.

WOOD RIMS. Our cycles are furnished with wood rims, unless otherwise ordered. These rims are proved and guaranteed. Steel rims, either nickel-plated or enameled.

TIRES. Morgan & Wright, Vici, Webb or Dunlop. Other makes if purchaser so orders.

HANDLE BAR can be furnished in either drop or raised pattern and in two widths, 16 and 18 inches.

FORK. Our Improved Fork is a design of our own, and is light with great strength.

This is considered so great an improvement that we give a special drawing showing its construction.

CHAIN. This is the great improvement of 1895, and we devote two pages to its description. Until you see this chain you cannot appreciate its merits.

Our Improved Fork.

THE CONSTRUCTION of our Fork is very light, yet exceptionally strong and rigid, being built in such a manner as to distribute all strain equally on the different parts. **FORK SIDES** are all reinforced.

The Morse Chain

IS THE GREAT IMPROVEMENT OF 1895.

THIS CONNECTION IS TO A CHAIN WITH THE PNEUMATIC TIRE IS TO THE WHEEL.

Just stop and think: No Oiling, No Binding, No Stretching, No Friction, and of course much less power to propel. Actual tests of 1894 show that in running 2,000 and 3,000 miles these chains did stretch only one-twentieth of an inch, and when put on factory machinery and run 5,000 miles the elongation was only one-eighth of an inch.

Do you think this is a pretty large story? Well, examine the cut and see how it works. It does not revolve around a pin, but works from the center and rocks in the pin, thus overcoming that great obstacle found in other chains.

Use this chain once and you would not go back to the pin friction for half the cost of a wheel.

You get a Mystic and you get this chain.

Before you buy a wheel see the Morse Chain.

We do not say of this chain that it is just as good, but that it is better than any other chain made, and is worth \$15.00 more to any wheel.

Join the Club and get an \$85 for \$65.

For particulars call on or address F. D. Craig, Pilot office.