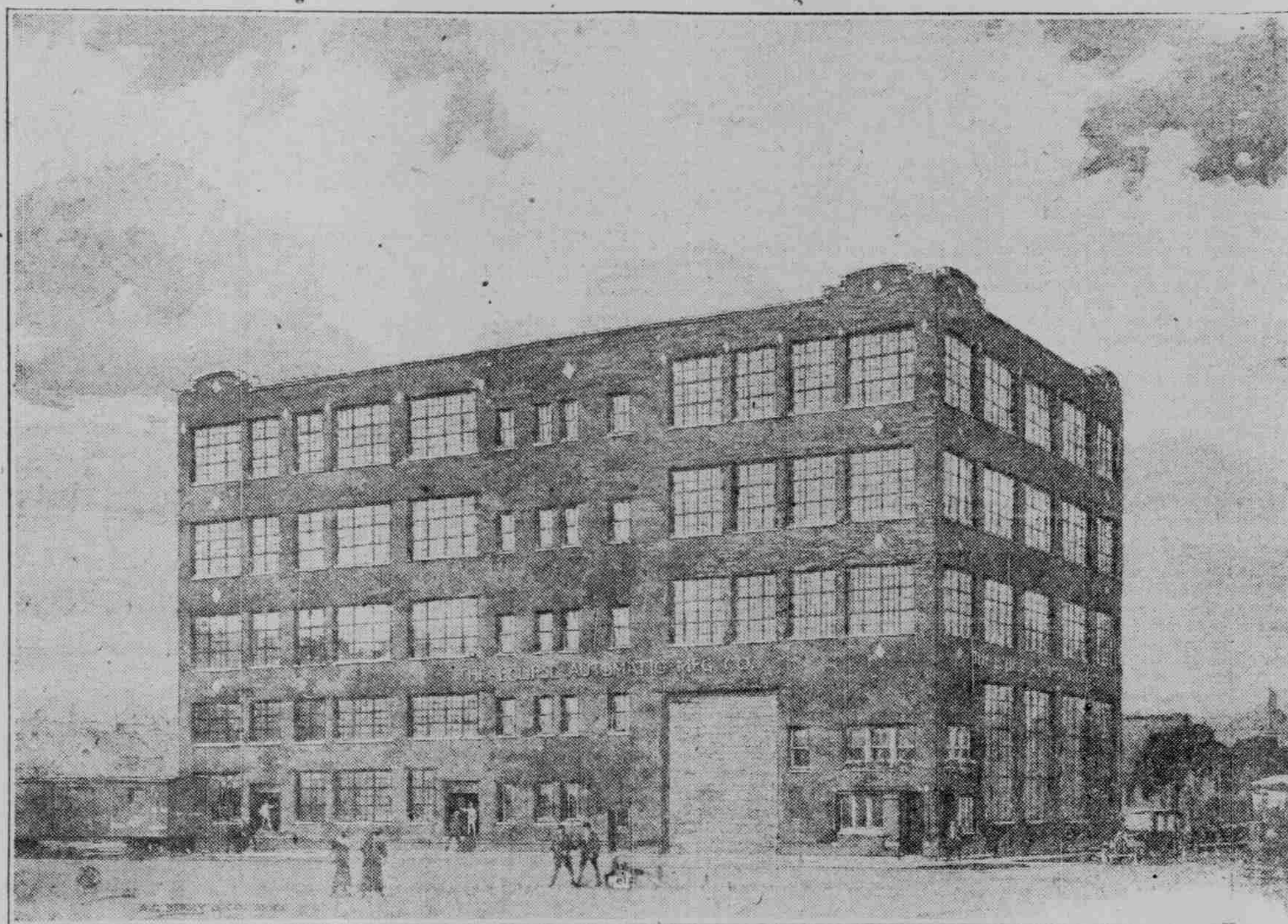


Another New Industry for Growing Hammond



The Modern Industrial Building
NOW BEING ERECTED BY
The Eclipse Automatic Manufacturing Co.
At the Corner of Conkey Avenue and Blaine Street

We will manufacture special machinery of our own invention—also many of the articles which are made by these machines—all necessary, and of universal demand.

Our Eclipse Wood-Working Machines are the acme of simplicity, and devoid of the usual disorders of this kind of machinery. Our Belt Sander may be used for sanding and grinding articles of wood or metal having straight or variously curved surfaces. Our Automatic Planer planes four sides of a board (as thin as one-eighth inch if necessary in one operation—mouldings of any kind, flooring of any size. This machine has a rip saw in connection, and with two operators and helpers will turn out two hundred forty feet per minute. Its capacity is regulated by the number of operators.

The Eclipse Automatic Gear Cutting Machines will cut iron, steel and brass gears in twelve hundred sizes of any type—spur, mitre, bevel, spiral, etc.

We will also design and manufacture machinery, parts and tools to meet special requirements.

Our building is little more than begun, yet we have been forced to accept orders for our products totaling more than three-quarters of one million dollars!

Our working force will approximate 600 employes, and as each floor is completed it will be put in operation with 150 men. We expect to start production in June.

The Calumet District is one of the greatest, liveliest producing centers of this whole country—and rapidly growing more so. Its natural facilities lend themselves admirably to manufacturing. A spectacular growth of Hammond is certain. Its business men will see to that. Its bank statements are the envy of cities with many times its population.

We have named some of the products of our proposed manufacture—and our reasons for locating here. We believe you are interested in knowing what Hammond is doing and what our business is.

The Eclipse Automatic Manufacturing Co.
HAMMOND, INDIANA
Temporary Office, 204 Ruff Building, Telephone 1673