

# Lion Store

PURE FOOD GROCERY

## Week-End Grocery Sales

SUGAR  
CURED

# HAMS

per pound 35c

Buy Your Easter Ham

**NOW** We've contracted for 1,500 Oscar Mayer's famous Approved Brand Hams for our Easter Sale, which commences Friday March 26th, ending Saturday, April 3rd.

Hams made where the most exacting standards are observed, given a long mild cure and sweet, hickory smoking—fancy plump 10 to 12 pound hams

pound 35c

Best  
Fresh  
Cocoanuts  
Good Size  
Each  
10c

Large  
Juicy  
California  
Lemons  
Each  
2c

Are You Getting  
Your Share of the  
Delicious, Healthful  
Turkish Layer Figs?  
Largest Size Grown

lb. 39c

**Special** Wright's Famous Salad Dressing: 12½ oz. bottle; regular 35c; this sale 29c

**Spinach** No. 3 cans Extra Choice Grade Pacific Brand Spinach, 19c  
Special 6 cans for \$1.00.

**Cheese** Choice Quality Yellow American Cheese, per pound, 35c

**Wine** Virginia Dare Wine, dollar size bottles, 85c

## Keep the Children Healthy

Give them plenty of Bread made from good flour Gold Medal flour is the best you can buy—Special sale this week



## Gold Medal Brand Flour

½ barrel sacks, \$1.88  
¼ barrel sacks, \$3.69  
½ barrel sacks, \$7.27

## Extra Special

Fancy Fresh Cut California Rhubarb (pie plant), 15c per pound

## Pepper

Pure Ground Black Pepper, (by the pound), 39c per lb. (One pound limit.)

## Tomatoes

No. 3 cans Solid Meat Pack Tomatoes, On 17½c special sale, can

## Candy

Lucia, Everyday, or Tempting Fruits in Cream—1 lb. box of chocolates, Regular 15c. Special at 40c. See our full line of Easter Eggs in boxes at 12c, 20c, 30c and 60c. Broken Mixed Candy, Regular 40c. Special, 1 lb. at 17c. Jumbo Salted Peanuts—Fresh every week, regular 40c lb. Special at 15 lb. for \$1.00.

## Drugs

Milk's Emulsion, for coughs, colds, etc. Regular 60c. Special at 45c. Get-it for corns, calluses, etc. Regular 35c. Special at 25c. Pectoral Sore-Throat Ideal Skin Beautifier, Regular 35c. Special at 17c. Our Own Laxative Food Tablets—Private formula. Regular 25c. Special at 15c. (Tax included.)

## Cigars

Tim Murphy Cigars—Cuban hand made, 50 in a box. Special at \$1.85. Camel Cigarettes, Regular 20c package. A carton \$1.75. Black and White Smoking Tobacco, one and five-eighths oz. tin. Regular 15c. Special at 10c. Black and White cigars, Regular 8c. Special 2 for 15c.

## Specials

Luxor Face Powder—Flesh, white or brunette. Regular price 60c. Special at 45c. Dr. Graves' Tooth Powder, Regular 25c. Special at 15c. Balm of Gilead—Almond and Benzoin cream—For chapped hands and after shaving. Regular 25c. Special at 15c. Violet Dulce Talcum Powder—Flesh or white. Regular 25c. Special at 15c.

## CITY HALL LEAKS LIKE A SIEVE

When J. Phylus punctured the clouds this morning he did not fail to overlook the city hall. Down through ceiling of the office of Building Inspector Henry Vis, little drops of water dripped one after the other and splashed directly in the center of the floor. Vis got a tin bucket somewhere and caught the recalcitrant rain drops. Someone hoisted a sign on the wall, "No smoking without a one-piece suit. Signed Mayor Brown." Vis is thinking of exercising his prerogative and condemning the building.

This rain came along just in time. The windows in the city treasurer's office will receive their first bath in many months. However, the fund created yesterday by William Koehnke for the redecoration of the city treasurer's office is still open to donations. A section of ceiling is yet to be replaced and the walls will resemble futurist paintings because they have been the playground for many generations of flies and related insects will be redecorated it is hoped.

## COL. SMITH NOT AT CHAMBER LUNCHEON

Col. Dan Morgan Smith failed to appear at the luncheon of the Chamber of Commerce this noon but the hundred persons who gathered to hear him speak will have an opportunity of hearing his "The World War and The Battle Fields of France," which Col. Smith will deliver tonight at the First Methodist church.

Resolutions were adopted by the Chamber of Commerce this noon honoring the program for Americanization as drawn up by the Hammond Woman's Club. Details of the plan will not be made public for several days.

## MRS. HELEN EBERLE PASSES AWAY

The many friends of Mrs. Helen Eberle, wife of F. J. Eberle of 425 Indiana avenue, Hammond, were shocked this morning to learn of her sudden death last night at St. Margaret's hospital of pneumonia.

Mrs. Eberle who was formerly Helen

Nyhoff was 37 years old and leaves to mourn her besides her husband, two sons, Francis and Clarence Eberle, also three sisters, Mrs. J. J. Youker, of Hammond, Mrs. J. J. Dirsch of Washington and Mrs. W. R. Riess of Chicago, also two brothers, J. J. Nyhoff of Troy, N. Y., and Herman Nyhoff, of Gary. Mrs. Eberle was an aunt of the late Elizabeth Youker who was drowned on Calumet boulevard last fall.

## BUS LINE IS INCORPORATED

(TIMES BUREAU AT STATE CAPITAL, INDIANAPOLIS, Ind., March 25.—The Chicago Heights and Eastern Auto Bus Line of Hammond has been incorporated with a capital of \$25,000.

The directors are: Raynor Denton, Frank H. Hathaway, James Dickson.

## HEADACHES FROM SLIGHT COLDS

LAXATIVE BROMO QUININE Tablets relieve the headache by curing the cold. A tonic laxative and germ destroyer. Look for signature E. W. GROVE on box. 25c—Adv.

## THE TIMES FINANCIAL COLUMN

Allis Chalmers	42½	Butter—5765 tubs. Creamery, extra, 65c; first, 59¢; 64¢; packing stock, 34¢; 35¢.
American Car & Foundry	138½	CIGARS—Receipts, 1716 cases. Current receipts, 41¢; 42¢; ordinary firsts, 40¢; 41¢; firsts, 42¢; checks, 35¢; 37¢; girls, 34¢; 35¢.
American Locomotive	162½	CHEESE—Twins, new, 25¢; 26¢; 28¢; 29¢; 30¢; Young Americans, 30¢; 31¢; Longhorns, 30¢; 31¢; brick, 27¢; 28¢.
American Smelting	67½	LIVE POULTRY—Turkeys, 40¢; chickens, 42¢; springs, 33¢; roosters, 28¢; geese, 22¢; ducks, 25¢.
American Steel Foundry	47½	POTATOES—Receipts, 44 cars. Minnesota and Dakota, 10¢; 11¢; 12¢; Wisconsin, 13¢; 14¢; 15¢.
American Sugar Refining	128½	CHICAGO CASH GRAIN.
American Tel. & Tel.	97	WHEAT—No. 2 mixed, 25½; No. 3 hard yellow, 25½.
Ansonia	62½	CORN—No. 2 mixed, 11½; 12½; 13½; No. 4 mixed, 11½; No. 2 yellow, 11½; No. 3 yellow, 11½; 12½; No. 4 yellow, 11½; 12½; No. 3 white, 11½; 12½; No. 4 white, 11½; 12½.
Baldwin Locomotive	133½	OATS—No. 2 white, 9½; 9½; No. 3 white, 9½; 9½; No. 4 white, 9½; 9½.
Baltimore & Ohio	32½	CHICAGO LIVE STOCK.
Bethlehem Steel	83	HOGS—Receipts, 2,500. Market, about 25¢ lower. Bulk, \$12.20; 12.40; Top, 12.15. Heavy weight, 12.70; 12.80; Medium weight, 12.60; 12.70. Light weight, 12.50; 12.60. Heavy packing sows, smooth, 12.60; 12.70. Packing sows, rough, 12.40; 12.50. Pigs, 12.40; 12.50.
Central Leather	53½	CATTLE—Receipts, 12,000. Market, steady, bidding 12.50 lower on local calves. Beef Steers: Medium and heavy weight, 12.50; 12.60; choice and prime, 12.70; 12.80; medium and good, 12.50; 12.60; Light weight, good and choice, 12.60; 12.70; common and medium, 12.40; 12.50. Butcher Cattle: Heifers, 12.50; 12.60; cows, 12.50; 12.60; bulls, 12.50; 12.60. Canners and Cutters: Cows and heifers, 12.50; 12.60. Veal calves (light and handyweight), 12.50; 12.60. Feeder steers, 12.50; 12.60. Stocker steers, 12.50; 12.60. Stocker cows and heifers, 12.50; 12.60. Stocker calves, 12.50; 12.60.
Colorado Fuel	28	CHICAGO VEAL—50 to 60 lbs., 20¢; 21¢; 70 to 80 lbs., 22¢; 80 to 100 lbs., 24¢; 25¢; fancy, 26¢; overweight kidneys, 140 to 175 lbs., 12¢; 13¢.
Consolidated Gas	50	NEW REVOLT IN TURKEY
Corn Products	92½	(INTERNATIONAL NEWS SERVICE) LONDON, March 25.—The commander of the Turkish Nationalist at Adrianople has definitely broken with the Constantinople government and has proclaimed a revolt, said a Constantinople dispatch to the Daily Express today quoting official information. The Turkish nationalists in Thrace are courting the support of the Bulgarian Communists in their anti-allied activities.
Cruible Steel	92½	SPECTACULAR FIRE IN BOSTON
Distilleries Securities	61	(INTERNATIONAL NEWS SERVICE) BOSTON, March 25.—A six-story office and factory building was destroyed in a spectacular water-front fire today. The building at the corner of Atlantic avenue and Olive street was ruined at a loss estimated at \$150,000. Fire boats joined with land apparatus called by four alarms in fighting the fire. Two firemen were injured by falling walls.
Erie	14	DELAWARE FEELS GLOOMY TOO



## The Secret Difference

in the Pathe tone is held in the famous Sapphire Ball—it glides smoothly around the records—never wears out. No needles to change; no wear on the records; always ready to play.

There is as much difference between the tone of a jeweled Pathe and an old-fashioned steel needle machine as there is between a priceless violin and a fiddle.

Yet the Pathe costs no more than an ordinary phonograph.

PHONOGRAPHS Pathe RECORDS

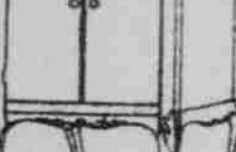
No Needles to Change



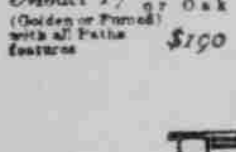
Model 6 Mahogany with all Pathe features \$50



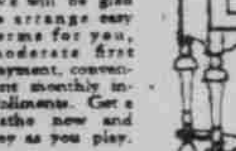
Model 17 Mahogany (Golden or Pearl) with all Pathe features \$150



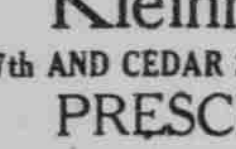
Model 17 Mahogany (Golden or Pearl) with all Pathe features \$150



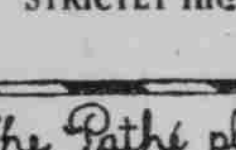
Model 17 Mahogany (Golden or Pearl) with all Pathe features \$150



Model 17 Mahogany (Golden or Pearl) with all Pathe features \$150



Model 17 Mahogany (Golden or Pearl) with all Pathe features \$150



Model 17 Mahogany (Golden or Pearl) with all Pathe features \$150

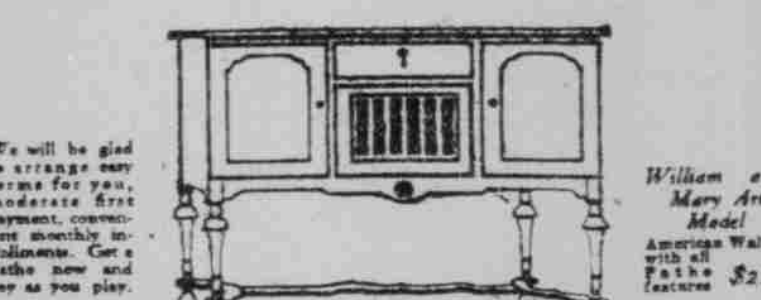
You will find a jeweled Pathe at the price you wish to pay; \$32.50 for a simple instrument, and more elaborate models, in all sizes, finishes and woods up to \$215.

Come in! Let us play a Pathe for you. Your ear will at once recognize the difference in tone made by the Sapphire Ball.

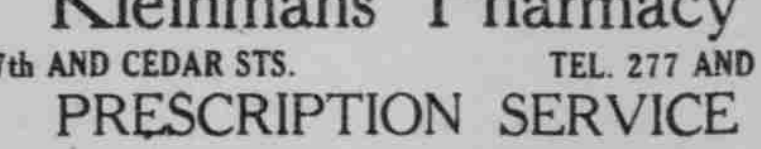
## Keep Up with Broadway

Pathe has the latest hits first and best. The songs that Broadway is whistling, the new one-step, jazz or fox trot that is all the craze.

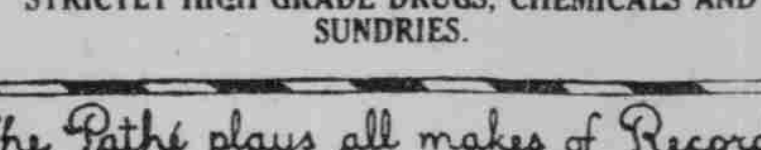
We will be pleased to play the new hits for you.



Model 17 Mahogany (Golden or Pearl) with all Pathe features \$150



Model 17 Mahogany (Golden or Pearl) with all Pathe features \$150



Model 17 Mahogany (Golden or Pearl) with all Pathe features \$150

The Pathe plays all makes of Records

## Pneumonia

often follows a Neglected Cold KILL THE COLD!

HILL'S CASCARA QUININE BROMIDE

Standard cold remedy for 20 years—A tablet form—safe, sure, no opiates—breaks up a cold in 24 hours—relieves grip in 3 days. Money back if it fails. The genuine box has a Red top with Mr. Hill's picture. At All Drug Stores

General Electric	187½
General Motors	28½
Hill's Central	74½
Lackawanna Steel	46½
Midvale Steel	49½
N. Y. Air Brake	105½
New York Central	74
Northern Pacific	73½
Ohio Cities Gas	47½
Pennsylvania	42½
Pittsburgh Coal	109
Republic Iron & Steel	105½
Shoemaker	104
Texas Co.	290
Union Pacific	110½
U. S. Rubber	108½
U. S. Steel	102
U. S. Steel Prod.	112½
Westinghouse	82½
Wills Overland	24½
Sinclair Oil	41½

BUTTER—5765 tubs. Creamery, extra, 65c; first, 59¢; 64¢; packing stock, 34¢; 35¢.

CIGARS—Receipts, 1716 cases. Current receipts, 41¢; 42¢; ordinary firsts, 40¢; 41¢; firsts, 42¢; checks, 35¢; 37¢; girls, 34¢; 35¢.

CHEESE—Twins, new, 25¢; 26¢; 28¢; 29¢; 30¢; Young Americans, 30¢; 31¢; Longhorns, 30¢; 31¢; brick, 27¢; 28¢.

LIVE POULTRY—Turkeys, 40¢; chickens, 42¢; springs, 33¢; roosters, 28¢; geese, 22¢; ducks, 25¢.

POTATOES—Receipts, 44 cars. Minnesota and Dakota, 10¢; 11¢; 12¢; Wisconsin, 13¢; 14¢; 15¢.

CHICAGO CASH GRAIN.

WHEAT—No. 2 mixed, 25½; No. 3 hard yellow, 25½.

CORN—No. 2 mixed, 11½; 12½; 13½; No. 4 mixed, 11½; No. 2 yellow, 11½; No. 3 yellow, 11½; 12½; No. 4 yellow, 11½; 12½; No. 3 white, 11½; 12½; No. 4 white, 11½; 12½.

OATS—No. 2 white, 9½; 9½; No. 3 white, 9½; 9½; No. 4 white, 9½; 9½.

CHICAGO LIVE STOCK.

HOGS—Receipts, 2,500. Market, about 25¢ lower. Bulk, \$12.20; 12.40; Top, 12.15. Heavy weight, 12.70; 12.80; Medium weight, 12.60; 12.70. Light weight, 12.50; 12.60. Heavy packing sows, smooth, 12.60; 12.70. Packing sows, rough, 12.40; 12.50. Pigs, 12.40; 12.50.

CATTLE—Receipts, 12,000. Market, steady, bidding 12.50 lower on local calves. Beef Steers: Medium and heavy weight, 12.50; 12.60; choice and prime, 12.70; 12.80; medium and good, 12.50; 12.60; Light weight, good and choice, 12.60; 12.70; common and medium, 12.40; 12.50. Butcher Cattle: Heifers, 12.50; 12.60; cows, 12.50; 12.60; bulls, 12.50; 12.60. Canners and Cutters: Cows and heifers, 12.50; 12.60. Veal calves (light and handyweight), 12.50; 12.60. Feeder steers, 12.50; 12.60. Stocker steers, 12.50; 12.60. Stocker cows and heifers, 12.50; 12.60. Stocker calves, 12.50; 12.60.

CHICAGO VEAL—50 to 60 lbs., 20¢; 21¢; 70 to 80 lbs., 22¢; 80 to 100 lbs., 24¢; 25¢; fancy, 26¢; overweight kidneys, 140 to 175 lbs., 12¢; 13¢.

NEW REVOLT IN TURKEY

(INTERNATIONAL NEWS SERVICE) LONDON, March 25.—The commander of the Turkish Nationalist at Adrianople has definitely broken with the Constantinople government and has proclaimed a revolt, said a Constantinople dispatch to the Daily Express today quoting official information. The Turkish nationalists in Thrace are courting the support of the Bulgarian Communists in their anti-allied activities.

SPECTACULAR FIRE IN BOSTON

(INTERNATIONAL NEWS SERVICE) BOSTON, March 25.—A six-story office and factory building was destroyed in a spectacular water-front fire today. The building at the corner of Atlantic avenue and Olive street was ruined at a loss estimated at \$150,000. Fire boats joined with land apparatus called by four alarms in fighting the fire. Two firemen were injured by falling walls.

DELAWARE FEELS GLOOMY TOO

(INTERNATIONAL NEWS SERVICE) WASHINGTON, March 25.—With the suffrage situation in Delaware considered almost hopeless, suffrage leaders here this afternoon turned their hopes to North Carolina.

Sue White, suffrage leader, returned here this afternoon from North Carolina where she declared she was assured by Gov. Ricketts, the state legislature would ratify the suffrage amendment late in June or early in July.

Advices from the Delaware state legislature to suffrage headquarters were not pessimistic.

DANIELS AGAIN IS CRITICIZED

(INTERNATIONAL NEWS SERVICE) WASHINGTON, March 25.—Secretary of Navy Daniels had a general lack of the appreciation for the necessity for providing in advance for enlisting and training of an adequate personnel for the navy and endeavored to stop enlisting during the war.

Capt. Leigh C. Palmer, chief of the bureau of navigation during and prior to the war, today told the senate subcommittee investigating the conduct of the war by the navy department.

LACK OF SHIPS HINDERED WAR WORK

(INTERNATIONAL NEWS SERVICE) WASHINGTON, March 25.—Lack of ships and communications greatly hindered the work of the American naval forces in France during the early days of the war. Rear Admiral W. P. Fletcher declared today before the naval court of inquiry which is considering evidence in connection with the removal of Admiral Fletcher

## DeLuxe Theatre

Today, Friday and Saturday

NELL SHIPMAN

BACK TO GOD'S COUNTRY

Friday and Saturday.

ANTONIO MORENO

in the 11th episode of

"THE INVISIBLE HAND"

Saturday and Sunday

HAROLD LLOYD

in his latest comedy

"CAPT. KIDD'S KIDS"

Sunday

OWEN MOORE

in

"SOONER OR LATER"

Monday, Tuesday and Wed.

CONSTANCE TALMADGE in

"A TEMPERAMENTAL WIFE"

PASTIME

—Today—

Miss Dakota Lawrence in

"The Danger Patrol"

Ben Wilson in "The Streamy Shadow"

Also a two reel comedy.

—Tomorrow—

John Barrymore in "Raffles the Amateur Cracksman"

Are you reading The Times?

## "Where Everybody Goes"

## Orpheum Theatre

HAMMOND :: INDIANA

—TODAY AND FRIDAY—

"MAID OF EGYPT" — An Oriental Dream

A Miniature Musical Comedy—10 People—Girls—Songs

and Dancing.

LA ROSE & LANE—Original Songs and Chatter.

GO-GET-EM ROGERS—The Dancing Bricklayer.

ENOR & WEBER—Singing, Violin and Banjo.

ERNEST RACKETT—He Rolls His Own.

WRIGHT & ALDINE—The Novelty Wonders.

Also PEARL WHITE in "THE BLACK SECRET."

New show Monday, Wednesday and Saturday. Matinee daily at 2:30 p. m. Night sessions 7 to 11. Sunday and holidays continuous 2 to 11.

## "WALK-OVER"

## Easter Footwear for Men

