

AUTOMOBILE SECTION

NO MORE GRANT CARS WILL BE SHIPPED ABROAD

With its production equipment taxed to capacity by the American demand for Grant light six motor cars, the Grant Motor Car Corporation of Cleveland has decided to accept no new orders for shipment of cars to foreign countries.

In the future the Grant export policy will be confined to filling foreign orders already on the company's books and carrying only for export contracts already made.

This change of policy, it is believed, will assist the Grant dealer organization in meeting the demand for the Grant in America.

The Auto Quiz

ANSWERS TO LAST WEEK'S QUESTIONS

- 1—The color of the exhaust gas when the cylinder is getting the correct mixture is bluish, visible through the cutout of exhaust manifold.
- 2—The construction of a muffler is a hollow cylinder of thin metal containing a number of compartments, the walls of which are perforated, to allow the exhaust gases to pass from

- one compartment to another. As the gases pass through these compartments, their pressure is reduced. When the gases finally reach the open air the pressure is almost entirely reduced thus muffling the noise.
- 3—The average diameter of a piston is from 5 to 7 thousandths of an inch smaller than the diameter of the cylinder bore.
- 4—The valves in an L-head motor are located in the combustion chamber at one side of the cylinder. On a T-head motor the inlet valves are placed on one side of the cylinder and the exhaust valves on the opposite side.
- 5—The roads in the U. S. total 2,435,000 miles. Only a small percentage of them, about ten or twelve per cent are finished with a surfacing.
- 6—Worn cams are a disadvantage to motor operation because they will not lift the valves sufficiently or in time to obtain full motor-running efficiency.
- 7—Leaky valves can be detected by turning the motor over with the crank to test the loss of compression. A badly leaking valve sometimes makes a hissing noise when the motor is in operation.
- 8—A unit power-plant is constructed with a motor, clutch and transmission gear-set supported by the same carrier as a unit.
- 9—A three-point motor support is a motor secured by its base to the frame of the car in three different places, called supporting arms. A four point has four of these supporting arms.
- 10—Although it is of slower combustion, kerosene contains more heat units pound for pound than does gasoline.

NEW QUESTIONS

- 1—In a car with both battery and magneto ignition, which system should be switched on for starting the motor?

- 2—What should be done to facilitate easy starting when the motor is cold or the battery weak?
- 3—Why are cars supplied with warm air intakes to the carburetor?
- 4—By what other names is the storage battery known?
- 5—What is a berlin limousine?
- 6—Which is the most harmful to tires, cold or warm weather conditions?
- 7—Will a bent steering knuckle throw the front wheels out of alignment?
- 8—Why is a tire cover desirable on a spare tire?
- 9—Is a muffler essential to motor operation? What is its purpose?
- 10—What per cent of gasoline is there in crude oil?

Advises Buying Car Now.

Edward S. Jordan, president of the Jordan Motor Car company, was the speaker before the Chicago Association of Commerce yesterday, and great importance was attached to his words because of his study of commercial problems in Europe as well as America. Mr. Jordan, who returned from a special visit of research to the world recently, declared prices of automobiles would continue to rise, and gave it as his opinion that they would never be any cheaper than at the present time. The large proportion of the world's cars are owned in America, and the world demand will make it impossible for production to catch up with this demand, he thinks.

The limit of production will be reached at about 2,000,000 cars a year, according to Mr. Jordan. The desire for passenger cars is universal, and this demand cannot be met. That will keep up the prices of automobiles. The world is sold on the passenger car, which is nearing mechanical perfection. There are more than 400,000 persons in Cook county paying income tax, and these are all prospective purchasers of cars. Mr. Jordan brought out: Fewer than one-fourth of these own passenger cars.

CASH For Your Dead Auto

You may have an old dilapidated automobile on your hands. It's doing you no good and doing no one else any good.

Turn it into money. I will pay you cash a top notch price for it.

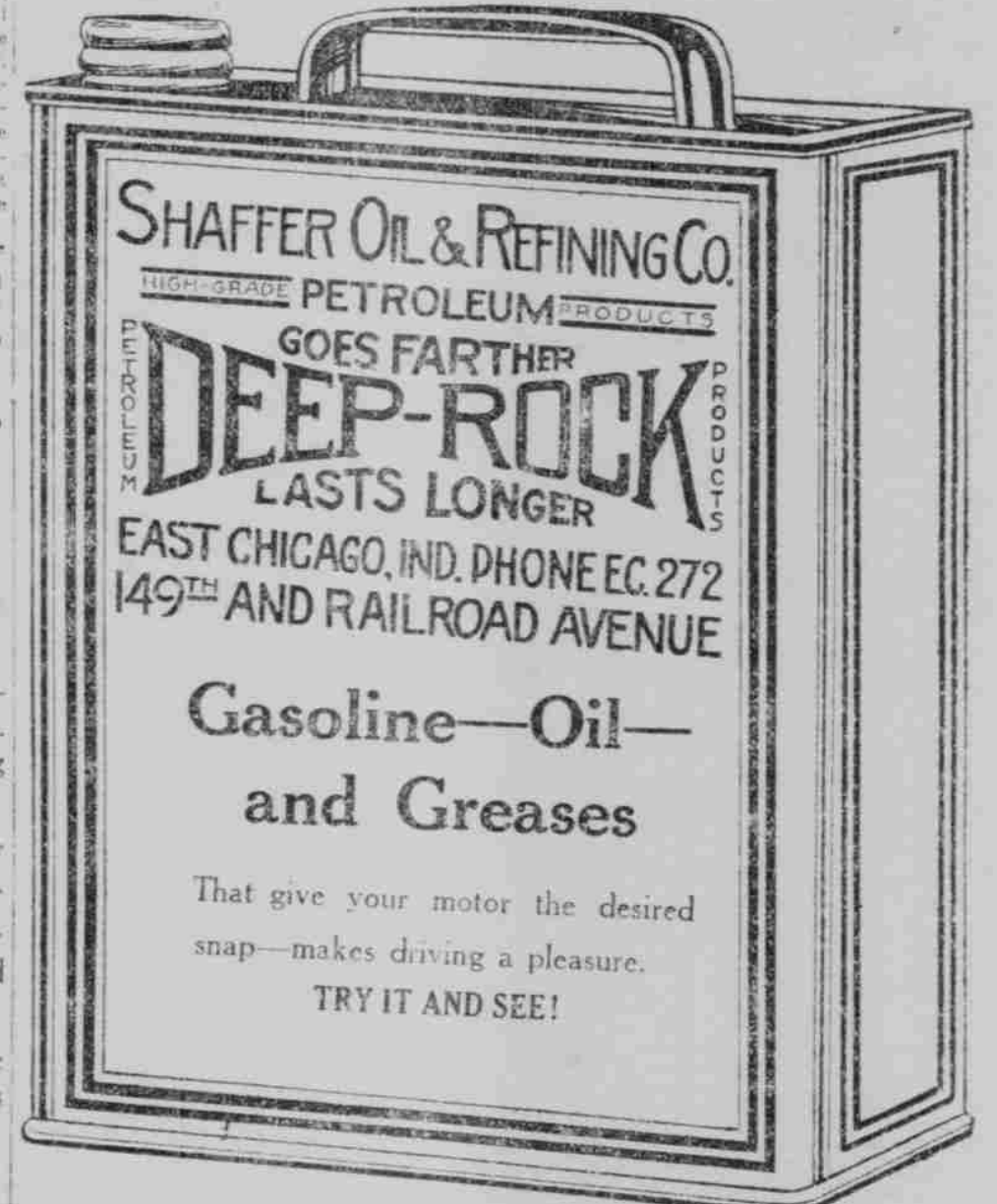
Now if you have any old tires or auto parts you have discarded bring them along, too.

I will pay you the highest price for anything you have that goes with an auto.

Maurice E. Ein

GENERAL AUTOMOBILE SALVAGE

Office and Yards Calumet and Conkey Ave., Hammond.
Tel. 2728.



SHAFFER OIL & REFINING CO.
HIGH-GRADE PETROLEUM PRODUCTS
GOES FARTHER DEEP-ROCK LASTS LONGER
EAST CHICAGO, IND. PHONE EC. 272
149TH AND RAILROAD AVENUE

Gasoline—Oil— and Greases

That give your motor the desired snap—makes driving a pleasure.
TRY IT AND SEE!

- HAMMOND.**
Columbia Fields Garage, Columbia and Florida ave.
Auditorium Garage, Calumet and Hoffman st.
Eclipse Dump Box Co., 226 Fayette st.
- EAST CHICAGO.**
East Chicago Garage & Sales Co., 4737 Forsythe ave.
East Chicago Auto Sales Co., 524 Chicago ave.
Quality Tire Shop, 513 Chicago ave.
J. S. Saut, McCook and Chicago ave.
Steve John, Alexander and Chicago ave.
Simbalmas Bros., Kennedy and Chicago ave.
- INDIANA HARBOR.**
Chilman's Garage, Elm and 138th st.
Harbor Auto Sales & Supply Co., Parish and 138th st.
- WHITING.**
Demkovich & Son, 513 Fischlapp ave.
- GARY.**
Benson Bros., Eleventh and Cleveland sts.
Benson Filling Station, Fifth ave. and Clark Road.
Joseph Kish, 18th and Broadway.
Frank Lenzhart, 203 W. Ridge Road.
Frank B. Scheidt, Black Oak.
Clarence Ogden, Kennedy and Sumner, Hoosierville.
Markema & Van Til, Highland.



THERE is no getting away from the fact that Threaded Rubber Insulation *armors* the plates of the Still Better Willard and helps them to do their duty without the disagreeable interference of short-circuits and other troubles common with ordinary insulation. There is nothing *ordinary* about Threaded Rubber.

Electric Service Station
717 Hohman St., Hammond, Phone 554.
INDIANA HARBOR TIRE & BATTERY CO.
137th and Grapewine, Phone 745R.
HENRY WAGNER & CO.
4337 Forsythe Ave., East Chicago, Phone 908.
RUBBERT BULLOCK
Crows Point, Ind.



BRISCOE

YOU can look your fuel bills in the face without a shudder when you're driving a Briscoe.

The world-famous Briscoe unit power-plant is again setting new records for economy.

O'Neil Auto Sales
671 Calumet Ave., Hammond.
Telephone 812



FOR EASTER

We can deliver on point jobs in time for Easter, if you place your order NOW.

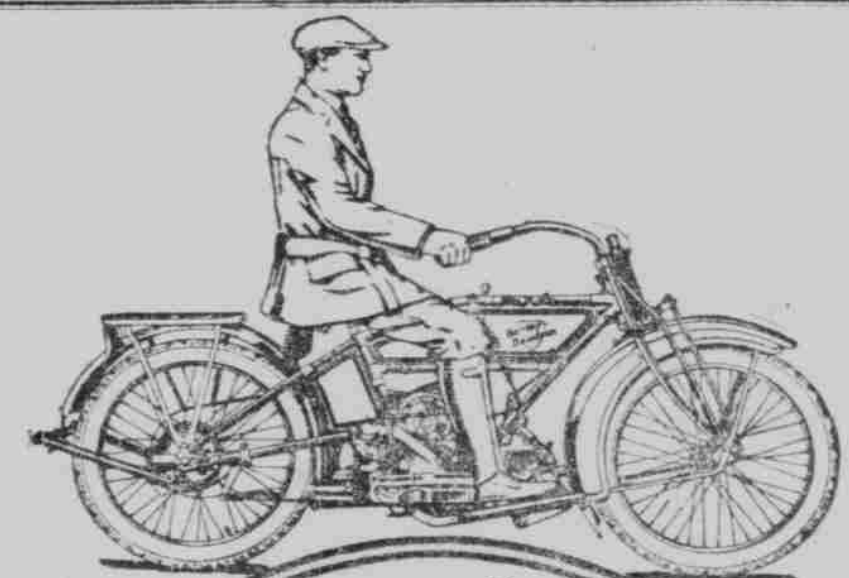
We have a building that was constructed especially for Auto Painting and Trimming.

We do contract work for leading auto dealers. The fact that they **MUST** have the best quality of work is pretty good proof that we can take care of your car in an admirable manner. And we are not overchargers, either.

Our building was designed specially for auto work. See us now for estimate.

Cut Rate Auto Repainting and Trimming Company

308 Michigan Avenue. Tel. Hammond 2141.
Residence 1043-M.
FORDS REPAINTED AND A NEW TOP.....\$40



"Get The Go!" of Motorcycling

WHISK with the wind—to work and home; about town on business; o'er city's boulevards, through pathy parks; afishing and hunting; a mile or two into the country, or more and as many miles as you like—aboard the broad seat of the fleet

Harley-Davidson

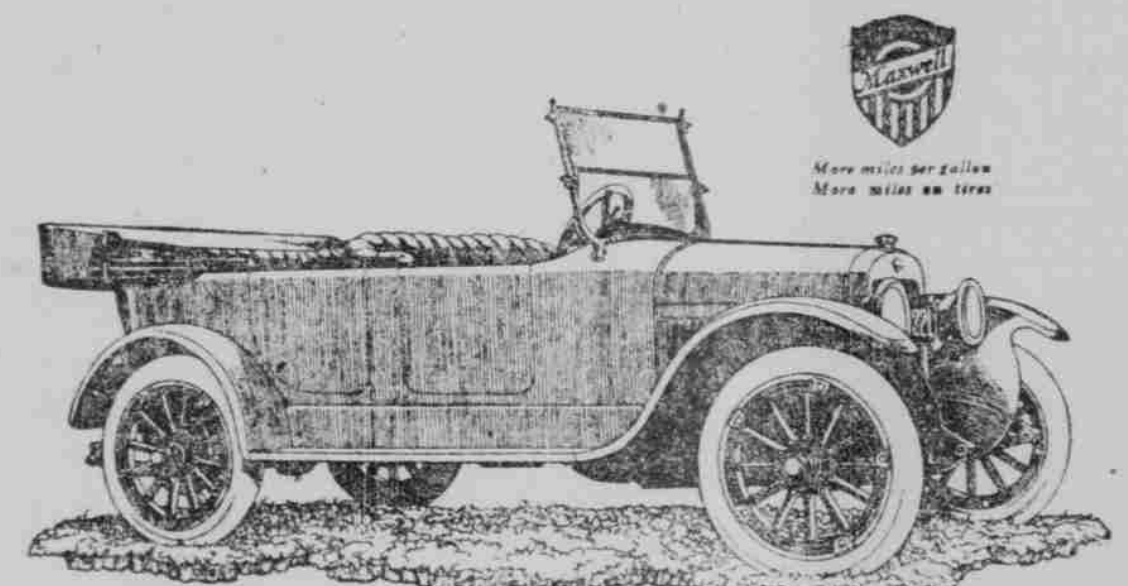
COME, be motor merry. Buy a Harley-Davidson Motorcycle, the same sturdy steed that so nobly stood the strain of war duty on the battle-fields of France, to which every service man will testify.

The motorcycle that has gained the name and fame of the **WORLD'S CHAMPION**.
Come here and see the 1920 model
Harley-Davidson

40 to 60 miles on a gallon of gasoline

250 miles on a quart of oil

J. E. LEECH, Harley Dealer
671 HOHMAN STREET. TEL. 2137 HAMMOND.



Steels Make the Maxwell Thrifty

SEVERAL million dollars have been expended to provide more elegance, more refinement, more comfort to the current Maxwells.

It is in ever so many ways a superior appearing car; superior, too, in action.

But not a single pound of weight has been added to burden the work of its great engine!

Therefore, despite the many processes of improvement, it doesn't cost a penny more to run a Maxwell than it did a year ago.

The underlying principle of every Maxwell is to give economic transportation.

This means light weight.

But it means strong steels, as well.

It is no easy trick to provide both lightness and strength in metal. Such a rare combination means high cost steels.

And you would find, if you compared a Maxwell with *any* car, that it equaled that car pound for pound in fine metals.

How such steels affect your pocketbook is obvious.

1. They are light in weight and hence give more mileage on a gallon of gasoline.

2. As they are fine steels they give *long* and *uninterrupted* wear.

Which are but two of many reasons for that definite tendency of world-wide friendship towards Maxwell.

In six years nearly 400,000 have found their answer to the motor car question in a Maxwell.

This year 100,000 Maxwells are being produced.

This will supply but 60% of the demand.

HAMMOND AUTO SALES
48-50 State St. Tel. 375