

WARNING TO TIRE PATCHERS

Amateur tire patching ruins thousands of automobile tires each year. It is a common practice among automobile owners when receiving a cut or puncture in a tire to insert a patch on the inside of the casing at the point of injury, thinking that the damage is permanently repaired. Such a repair will in time ruin any tire, says the B. F. Goodrich Rubber company.

It is a good practice to apply patches in such cases but a tire sleeve should always be placed on the outside of the tire opposite the patched portion at the same time. The sleeve serves to bind the tire, hold the torn and injured parts of the fabric in its place and prevent further chafing and rupture.

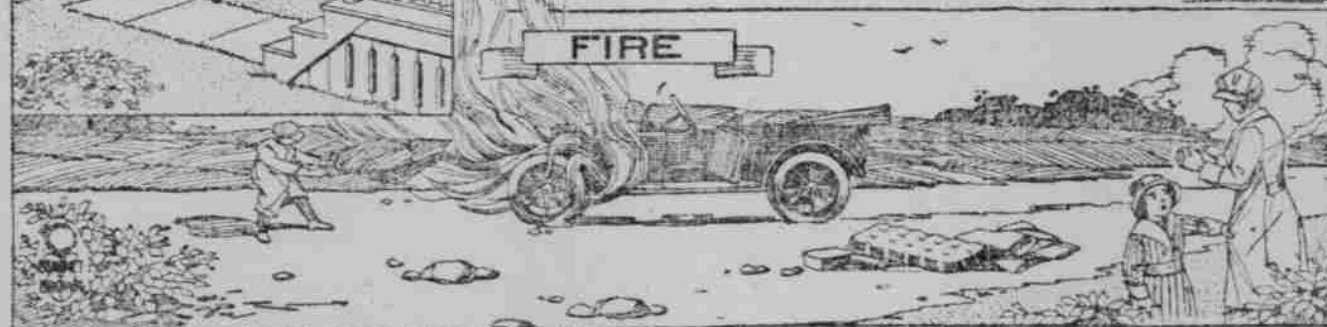
The tire sleeve and patch are merely "first aid" appliances and should be removed at the earliest possible moment. It will pay motorists to drive to the nearest repair man immediately after the injury occurs. If allowed to run without repair every time the wheel makes a revolution the tire quickens its pace toward the scrap heap.

¶ When the cave man wanted help or a wife he strode forth, tapped one on the head, and dragged he or she to the tribal habitat.

¶ Civilization has placed certain restrictions and limitations about us which prevent this beautifully simple method.

¶ But it has given us the want ad, which costs but a few cents, and no physical effort

AUTOMOBILE INSURANCE



If?

If you should hurt someone?
If your car should meet with an accident?
If your car were stolen?
If your car should burn?

*We have a policy
that protects you
in every way.*

Prudent men believe in Insurance. They realize that accidents are liable to happen any time—that no matter how careful they may be, it is good policy to have an Insurance Policy.

Stop in today and let us show you the advantages of the Insurance we can give you for a little money.

Illinois Automobile Insurance Exchange

W. A. Young, Mgr.
615 State Line Street, Hammond
Phone Hammond 3607.

SAFETY FIRST

Increase the Mileage of Your Tires

By Having Them Vulcanized the Right Way

Under our system of vulcanizing we guarantee to make inner tubes absolutely air-tight and as strong and safe as new. We also replace torn-off valves.

Do not junk your outer casings until you bring them to us and have them examined by an expert tire man who will tell you if they are worth repairing. All work taken guaranteed to give satisfaction.

GET A MAXOTIRE

They will save you buying tires and tubes so often.

You can wear your tires down to the last thread—often more than doubling the mileage.

Often Maxotires make weak casings, or seconds, or cheap tires last as long as "firsts."

Common tires with Maxotires will give as much mileage as oversize without and the chance of the trouble is practically eliminated—a big saving.

A large stock of Hood, Fisk and Pennsylvania Vacuum Tires, new fresh stock, always on hand at the right price.

Tom Jordan's Calumet Tire and Repair Shop

116 SIBLEY ST.

PHONE 2387

The Winning Tire

all over America—at the great State Fairs where dirt track auto races were held recently Ajax Tires won victories. In 237 red hot finishes they took the scorching punishment and finished first.

AJAX ROAD KING

Auto Top Trimming

is our specialty. Prices are right and work fully guaranteed. You will not regret by seeing me first. No charge for estimates.

Auto Accessories—

I carry a full line of accessories. See me for supplies and save money.

J. H. WIEDERGOTT

663 Hohman St.

Tel. 720

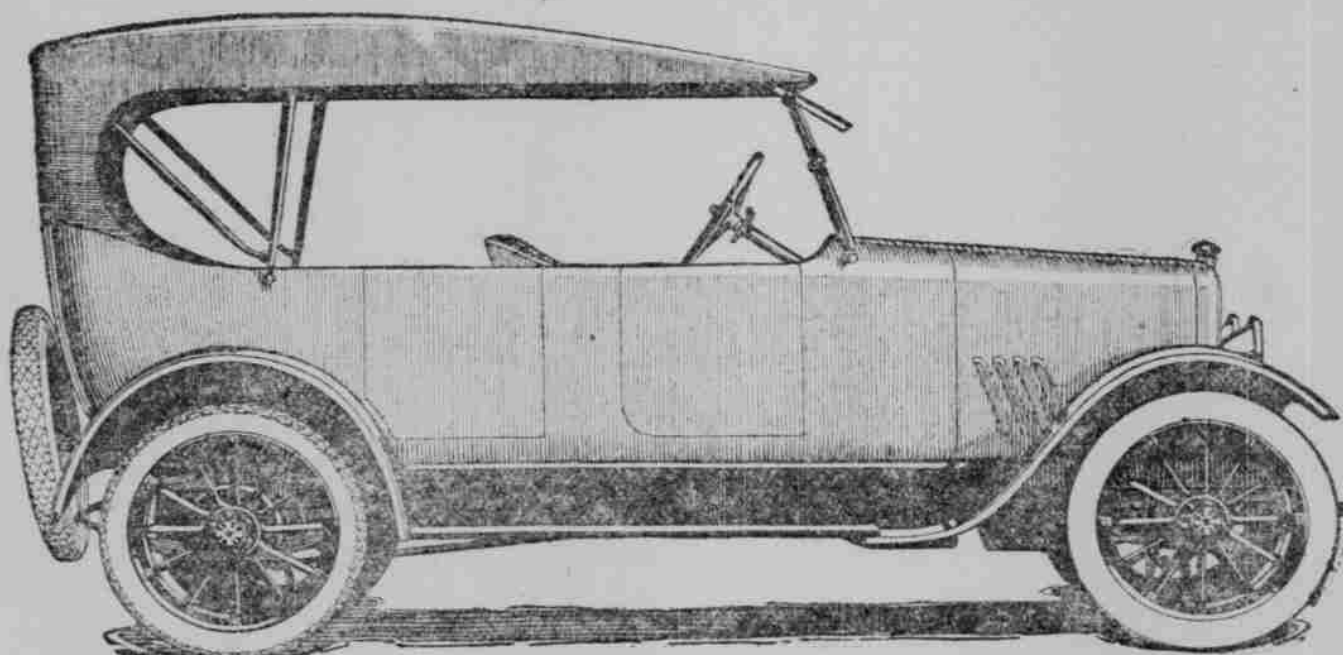
Hammond, Ind.

Briscoe Motor Cars

*Beauty, Comfort, Service--
The Three Graces of a Motor Car*

\$985

F.O.B. Factory



\$985

F.O.B. Factory

THESE three prime essentials of a motor car--Beauty, Comfort and Service--are found in the Briscoe in a degree heretofore obtainable only in cars of much higher price.

And these desirable qualities are combined with an economy of operation and a certainty of freedom from trouble and difficulties, whatever the road, that makes motoring a pleasure unalloyed.

THE Briscoe Roadster, like the Touring Car, is built to embody every requirement of the motorist.

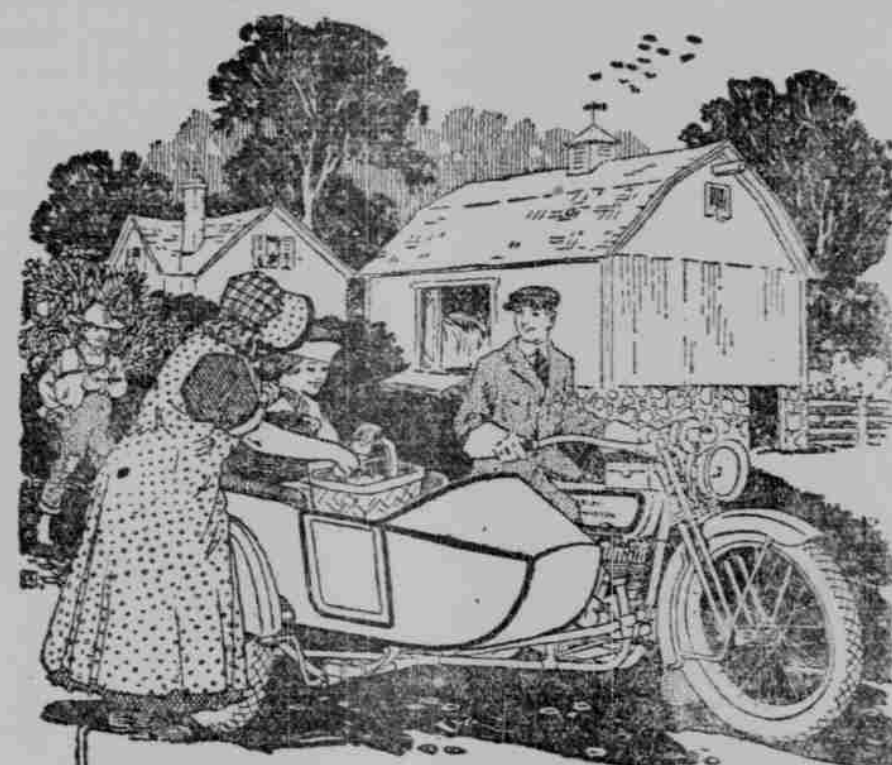
Its snappy, graceful lines make it ideal for the professional man or the salesman. There is a sturdiness and a virility about it that are a joy to the eye; and it carries, of course, the regular Briscoe master power plant.

Distributor for Hammond, East Chicago, Whiting

Hobbs Garage

410 Carroll Street

HAMMOND, INDIANA



"Do your marketing in the country."

**Travel for One-Quarter the Cost of
Railroad Fare**

50 to 75 miles per gallon of gasoline
800 to 1500 miles per gallon of cylinder oil
5,000 to 8,000 miles per set of tires

The Harley-Davidson is a real economy in many ways. It saves innumerable carfares—makes marketing a pleasure—takes you on visits to distant friends—all for a cost so trifling that it is truly surprising. The

Harley-Davidson

"For 15 Years the Master Mount"

driven with a sidecar, will transport two people for less than 1/4 the cost of railroad fare.

Take the wife in the sidecar and slip away to the country. An hour's refreshing ride and you are far away from the realm of city prices. You stop for a minute with Farmer Brown and purchase a fowl for two-thirds what it would cost at your market. Another mile, a basket of eggs is added, and you are dollars ahead. A third halt while you bargain for a load of potatoes to be delivered next week—at half the usual price.

Come in and let us show you how the Harley-Davidson will pay for itself. No obligation. Just come in and hear the story.

J. E. LEECH

Motorcycles and Accessories
678 Hohman St. Hammond

Have you seen the Harley-Davidson Bicycle?

Subscribe For The Times