

## FADS AND FASHIONS

Hats are nearly all dark.

Skirts are long, narrow and high waisted.

The hipless girl is in the height of style.

The vest is an important feature this winter.

Bodices are absolutely flat and close-fitting.

Plaids seem to be the favorite wear for schoolgirls, both large and small.

Women's calling cards have changed slightly in shape, and are now almost square.

The fashion of bloomers for the small girl is an increasingly popular one.

The lace coat figures as a part of



LADIES' TUCKED NIGHTDRESS.

This design is particularly adapted to flannel, although practical for any material. There is no unnecessary fullness in the gown or sleeves. The tucking of the tucks, which turn in opposite directions, give the effect of box pleats. Cut in 3 sizes, 32, 36 and 40 bust measure. Size 36 requires 5½ yards of 36-inch material and measures 2-3 yards around the hem. Price of pattern 453 is 10 cents, pattern department of this paper.

Hairpins with the open-arched tops are most stylish.

Children's white fur hats sound a wide range of style.

Lines are for the most part long and flat and straight.

The slipper is colored to match or contrast with the gown.

White fur of every sort and kind will be much worn the coming winter.

many of the dressy frocks this season.

An entire crown representing a great rose is one of the novelties encountered among hats.

Braided cheviot and serge have retained their popularity for separate coats and suits.

White coats for the street are long and hang in almost straight lines from



LADIES' AND MISSES' YOKE SHIRTWAIST.

Although plain this waist has the style of the real tailor-made waists. It is a design suitable for thick or thin materials. Cut in 5 sizes, 32 to 40 bust measure. Size 36 requires 3½ yds. of 27 in. material. Price of pattern 439 is 10 cents. Fill out blank and send to Pattern Dept. of this newspaper.

the shoulders.

Black satin, messaline, or satin-faced crepe is exceedingly stylish in colored dresses.

Sleeves reach to the wrist and mould the arm with a somewhat unflattering faithfulness.

For visiting cards, Old English, Roman block and old-fashioned scrip are all fashionable.

For shopping, street or general service, the skirt is usually plain and in clearing length.

The opera bags seen this year are very elaborate affairs on which many gold spangles are employed.

Tiny wreaths of flowers made of ribbon achieve the daintiest kind of decoration for girls' frocks.

In fur coats one finds a survival of kimono sleeve, fitted into the arm and made into a coat sleeve.

Large revers and the standing collar are emphatic features of the season's styles in coats.

Winter cloaks are very much longer

and the backs are even straighter and flatter than they were three months ago.

One of the recent touches on the ready-made white net waists is a black cord around the lower edge of the collar.

Fish net continue to be much used for blouses and many beautiful models are made over a chiffon cloth or mousseline lining.

Sleeves must spring straight from the armhole without any little kimono manche or meretricious epaulette to break the severe effect.

Sets of jeweled hatpins are one of the gifts now bestowed upon the fashionable bride. The set generally consists of five pins.

A shirtwaist of French flannel, having a small polka dot on a white ground is attractive with a necktie and belt the color of the polka dot.

A very exclusive haberdasher in Paris is introducing men's handkerchiefs with monograms three inches long and a half an inch in width.

The raglan holds its own among long coats, as one that is not only extremely useful, but also possessing a certain distinctive style.

Tunics of Greek inspiration, draped now from the shoulders and again from the hips, are to be seen both on evening and on afternoon gowns.

A heavy stocking in silk or Hise thread effect in two colors is brought out for those who wear low shoes all the year around.

Many of the season's coats have sashes coming from beneath the vest or from the edges of the consulaten collar, either one adding a stylish touch.

The deep, narrow yoke is an insistent feature of this season's modes and is in perfect harmony with the tendency toward tall, slender effects.

In this day of slashed skirts and petticoatless ankles both slippers and stockings have assumed a place of luxury and importance undreamed of in other times.

Muffs and neckpieces of marabout are very popular just at present, and particularly is this the case with the kind known as the clustered marabout.

Fur is used not only for collars and muffs, but around the bottom of coats of various lengths, especially the very long and the three-quarter length coats.

Brother and sister are the titles given respectively to the sylphoekker and princess slip—two garments of Italian silk warranted to give the new figure.

Not only are skirts sheath fitting, but all petticoats are made in exactly the same way. Otherwise it would be impossible to attain the desired result in gowns.

Bronze and olive-green, myrtle, smoke-gray, elephant, prune, Russian blue, cadet, navy and the rich dark blues are la made handsome by trimmings of black satin or velvet.

With the directoire coats the sleeves are long and come very low down over the hand as well, while they are likewise buttoned down the seam and adorned with a row of braid loops.

The princess and directoire skirts extending above the normal waistline retain their hold upon popular favor, and the bodice should be in harmony with the skirt of this character.

The cossack turban sits flat on the head and covers the forehead as well as most of the back hair. Although it is not at all becoming, their barbarous-looking turban has taken Paris by storm.

The separate collar is a happy idea for the woman who likes to give a good gown good, hard wear. With the collar, she has a luncheon gown; without it a dress for the restaurant or theater.

A marked feature of the new skirts is the shifted position of the closing. They almost invariably fasten on the left side of the back, though the bodices continue to close in the center. Afternoon gowns that are suitable

for reception, teas, and other affairs of more or less informal nature are made of broadcloth, chiffon-velvet and silk cashmere, and are in sweep length.

o part the hair in the middle is just now the fancy of the Parisienne, the waves being brought well down over the face, while the hair is turned abruptly back at the sides over two cunningly inserted side-pads.

While no skirt at the present time can be called full, those designed for soft, thin materials are often made to fall in voluminous folds, but they have the top closely laid in tucks that produce the sheath fit.

down to the delicate little wrist and vanity bags.

Each one of the puffs arranged at the back of the Psyche knot is held in place by a large hairpin, and the pompadour is now held by a pin instead of a comb. Some girls, too, have gone so far as to add one to each side of the knot.

In gowns having the high waistline, the top of the skirt is often tucked, but if the gown is of chiffon or anything of this nature the gathered top permits the soft folds of the material to cling to the figure and follow the outline becomingly.



LADIES' CIRCULAR APRON.

This apron is pretty as well as useful and being without gathers is very easy to launder. The crossings of the straps in the back keep them from falling off at the shoulders and the pointed bib gives a becoming waist line. Cut in three sizes, 32, 36 and 40 bust measure. Size 36 requires 3½ yards of 27-inch material. Price of pattern 421 is 10 cents, patterns department of this paper.

The shortened waist and straight, clinging lines of the skirt are features that strongly influence the winter modes, characterizing evening gowns, dressy coat suits for afternoon and other affairs of ceremony.

This is a day when bays, little or big, ostentatiously plain or elaborately decorated, are put to a hundred uses, from the shopping and automobile bags

Bouillon lace is constantly employed by French dressmakers as a finishing. This lace in which all the metallic shades are blended with yellows, whites, reds and greens, is a sumptuous material, most effective for bits across the bust and armholes.

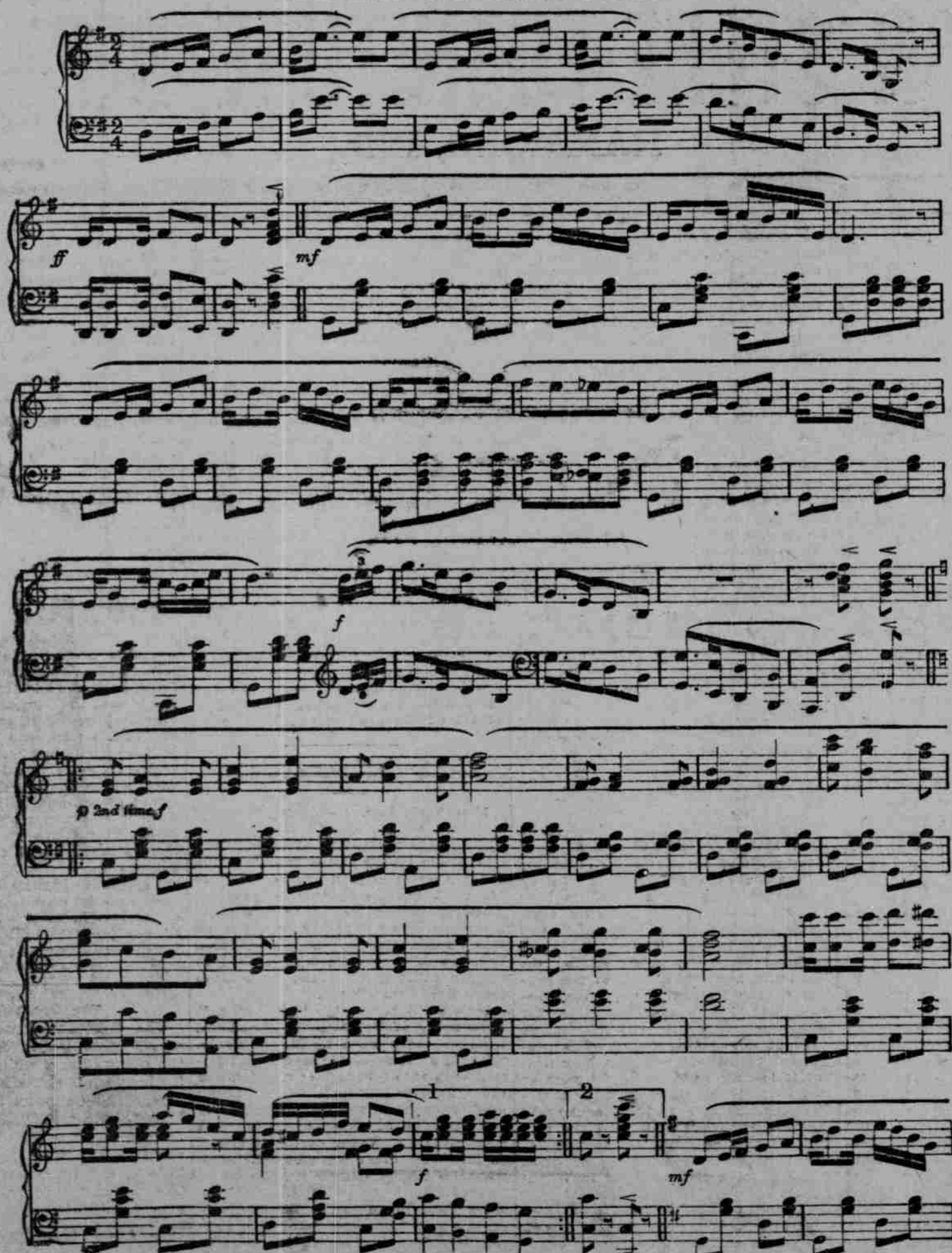
More news on one page than its competitors have on all.

## THE TIMES MUSIC DEPARTMENT

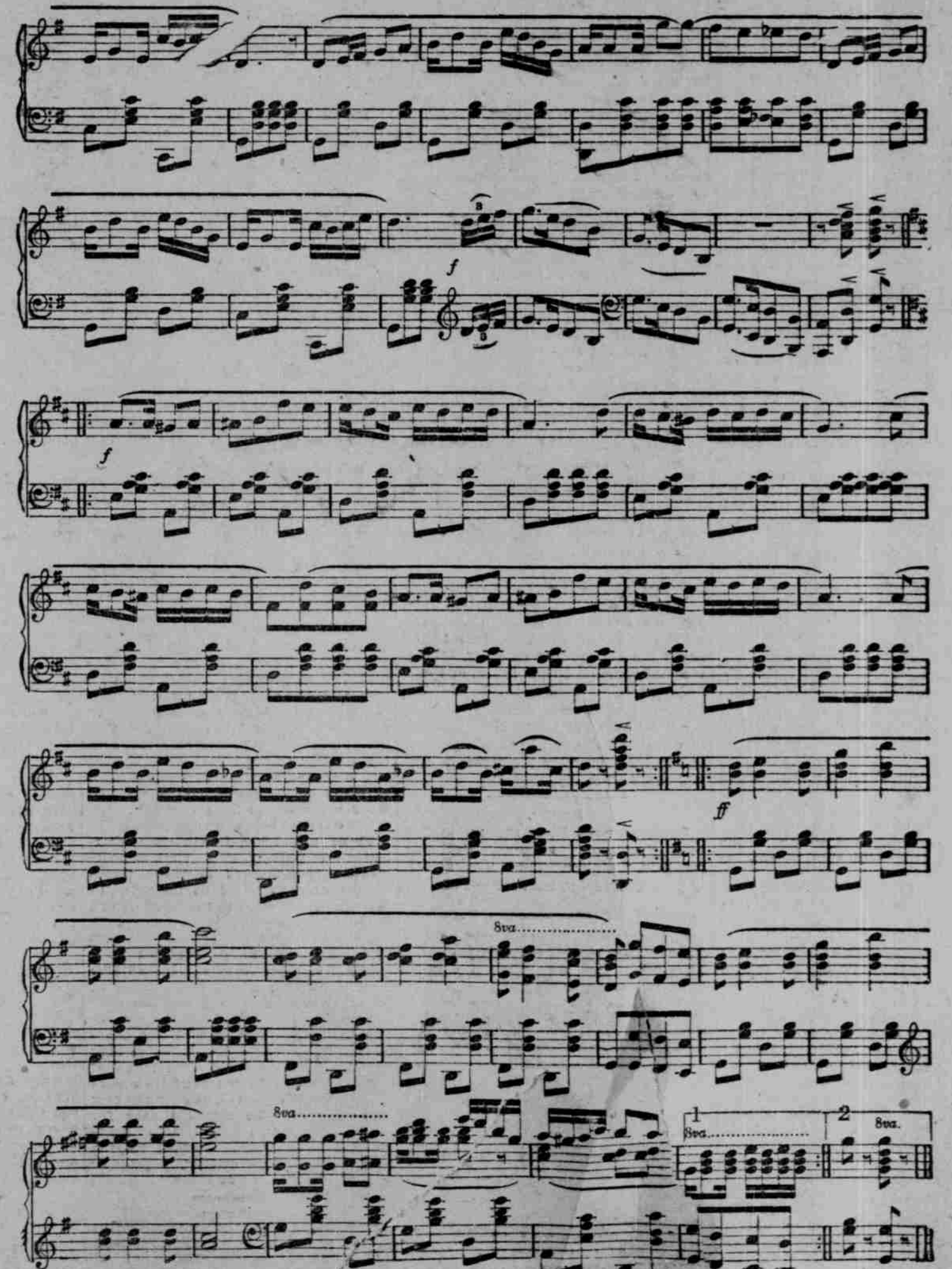
## SAMBO'S HONEYMOON.

TWO-STEP AND CAKE WALK.

F. A. Franklin.



American Melody Co., N. Y. Copyright 1906.



SAMBO'S HONEYMOON.