



Times photo by Paul M. Elmore.

The Teen of the Week—

GAIL JAFFE, The Times' Teen of the Week, is a Shortridge High School girl with an ambition and she does something about it.

Her ambition to study in New York with Frances Robinson Duff is being aided and abetted locally by parts in Booth Tarkington Civic Theater productions and dramatic programs at Shortridge.

When Gail isn't acting or rehearsing, she's following the work of her favorites, Lynn Fontaine, Helen Hays, Kathryn Cornell and Doris Paxton. "I admire their acting ability and their lives, from the things I've read about them," she said.

Helen Hays always answers Gail's birthday cards to her with an informal note, which Gail reports, stirs her ambitions.

A freshman at Shortridge, she is vice president of the Footlights Club and worked on the drama festival as well as this year's Junior Vaudeville production.

At Civic Theater she has participated either before the footlights or backstage in Robin Hood, Radio Rescue, The Twelve Dancing Princesses, The Taming of the Shrew, Morning Star, Seventeen, Hansel and Gretel, The Three Bears, Marco Polo, Village Green and Elizabeth the Queen.

Mr. and Mrs. Abe Jaffe, 2933 Ruckel St., Gail's parents, are trying to train her along culinary lines, she reports.

"Mother keeps explaining to me how young actresses have to economize and I will, too," she said. "It's probably a good thing I like salads."

Each Sunday The Times will announce the Teen of the Week. Fill out the coupon below and send it to Joan Schoemaker, The Indianapolis Times, Indianapolis 9, for your nomination of the Teen of the Week before midnight Tuesday.

I nominate _____ (Name) _____ of _____ (School) _____ (and City) _____ (Home Address) _____

for Teen of the Week. My reasons for the selection are given on a separate sheet of paper attached to this coupon.

My name _____

Embassy Talk Set for Phi Mu

Mrs. Leroy Burney, 321 Blue Ridge Rd., will be hostess at 7:45 p. m. tomorrow for a meeting of the Phi Mu Sorority Alumnae.

Mrs. Van Francisco will talk on "Life in an American Embassy." Assisting the hostess will be Mesdames Maurice Pickett, Lawrence Clark, James Walden, Leo White, B. W. Whaley, John J. Huron and William Ervin.

Mrs. Vandivier Will Entertain

The Indianapolis Branch, National League of American Pen Women, will meet at 1:30 p. m. Saturday with Mrs. J. C. Vandivier, 3652 N. Delaware St., for dessert.

Dr. Johnnie R. Smith, Bloomington, will preside at the business meeting.

Mrs. W. S. Grow will give a program on "Introducing G. O. K. Keefe, Painter." Assisting Mrs. Vandivier will be Mesdames C. G. Shepherd, Vate Burner, M. M. Shelley and S. D. Stabler and Miss Helen McGaughey.

Bridge, Canasta Party Scheduled

The annual bridge and canasta party will be given Saturday by the Eliza A. Blaker Club in the auditorium of the Colonial Furniture Co.

Proceeds will be used for the scholarship fund. In charge of the event will be Mrs. Homer DeVie and Miss Adelaide McCarty, chairmen; Mrs. E. O. Neir, prizes, and Miss Mary Louise Neir, candy. Mrs. Clyde Smith is club president.

Civil Defense Talk

"Civilian Defense" will be discussed by Charles E. Broderick at the 1:30 p. m. Thursday meeting of members of Past Presidents of Parent-Teacher Associations in the World War Memorial. The association's executive board will meet at 12:45 p. m. that day.

Lamp Shades
WA. 5135
CLEANED
RECOVERED
REWEAVED
Wetter Lamp Shade
Cleaning Co.
3 DAY
CLEANING
SERVICE

Slumgullion Comes to The Party

POST-HOLIDAY parties, of necessity, are meager. Carry out your entertaining urge with a hard-times party with the food keyed to the occasion.

Slumgullion, garden patch salad, garlic French bread and cold beer are the perfect menu. Not only inexpensive, the food carries out the theme of the party and is easy on the hostess.

To make the salad, mix together washed and cut-up lettuce, cabbage, carrots, scallions, onions, celery and tomatoes. Chill well and pour French dressing over it just before serving.

THE GARLIC bread is made easily by cutting thick slices of the French bread almost through to the bottom crust. Pull slices apart slightly and brush the inside with butter in which garlic has been simmered. Pop it into the oven until it is crisp.

Slumgullion is easy to make in a large Dutch oven. Brown three-pounds of boneless stew beef in about two tablespoons fat. Pour in one quart of water to which two tablespoons salt, one-half teaspoon pepper, one-fourth teaspoon each of thyme, marjoram and chervil, three sprigs of parsley and one-fourth cup of chopped celery leaves have been added.

SIMMER THIS covered, about one hour. Add a dozen medium sized onions and four cups chopped celery and simmer about 30 minutes longer. Add eight medium carrots and eight medium potatoes, peeled and cut into quarters. Simmer again about 40 minutes.

If desired, three tomatoes, cut into quarters can be added the last 10 minutes of the cooking time. Remove the meat and vegetables to a serving dish and thicken the broth with a flour and water paste. This will serve from eight to 10.

Water Movie To Be Shown

"Willing Water," a movie, will be shown by John E. Kleinheinz, Indianapolis Water Co. public relations director, when he addresses the Butler University Mothers Council Friday.

The 2 p. m. meeting will be in Jordan Memorial Hall recreation room. Mothers of all Butler students are invited to attend.

HOSTESSES WILL be Mesdames J. T. Leaf, Arthur Dunham and D. B. Starr, all of the Delta Delta Delta Sorority Mothers Club, Tri Psi; Mrs. Herbert Harris and Mrs. Ralph Iula, Lambda Chi Alpha Mothers Club, and Mrs. William Shors and Mrs. Bradford Noyes, Women's Faculty Club.

How to Make Tea



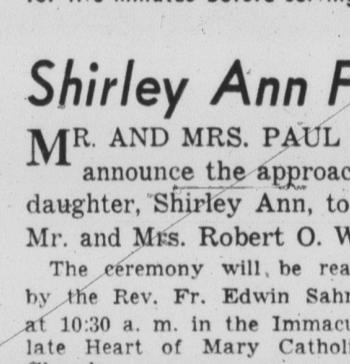
To make wonderful tea, fill the tea kettle with fresh cold water from tap. Best tea kettles are tin plate or copper.



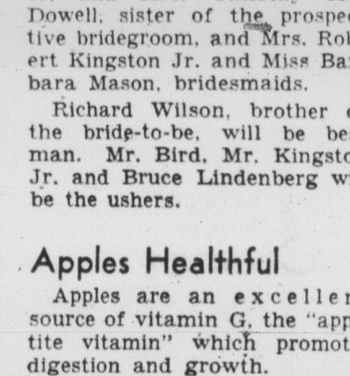
Measure one heaping teaspoonful of top quality tea for each person and one for the pot.



The brew is allowed to stand for five minutes before serving.



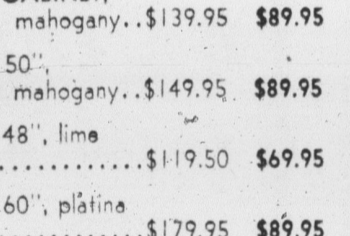
Hot water added to pot will make sufficient tea for a second serving.



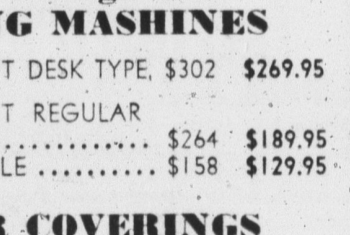
Tea pot is taken to stove and bubbling water quickly poured over tea leaves.



Tea pot is taken to stove and bubbling water quickly poured over tea leaves.



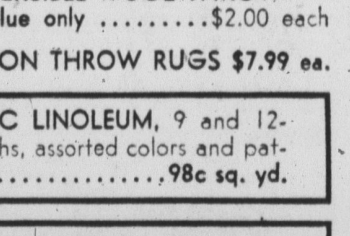
Tea pot is taken to stove and bubbling water quickly poured over tea leaves.



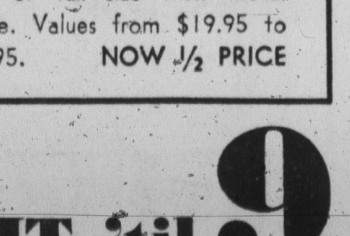
Tea pot is taken to stove and bubbling water quickly poured over tea leaves.



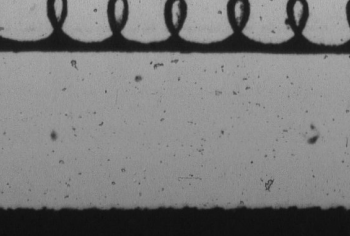
Tea pot is taken to stove and bubbling water quickly poured over tea leaves.



Tea pot is taken to stove and bubbling water quickly poured over tea leaves.



Tea pot is taken to stove and bubbling water quickly poured over tea leaves.



Tea pot is taken to stove and bubbling water quickly poured over tea leaves.

Change Old Cook's Ways

Like to try new dishes? Pork tenderloin lends itself to various ways of serving. This popular pork cut may be left in one piece and roasted or braised.

It may be cut into individual servings and frenched (cut crosswise into two-inch slices and flattened) and braised or slowly panfried.

For still more changes, the whole tenderloin may be filled with a well-seasoned stuffing. Simply slit the muscle nearly through lengthwise, open it out flat and stuff. Or two tenderloins may be flattened, stuffing placed between them and skewered.

Whichever way you prefer, place on a rack in an open roasting pan and roast in a moderate oven (350° F.).

Carrots for Kids

If your kids think carrots are for the horses, try cooking them (carrots—not kids) cut lengthwise, in broth or bouillon until barely tender; dress with lemon juice and generously buttered and crumbs.

Try Hot Lemonade

When a bad cold strikes, try pampering yourself with some hot lemonade—made the easy way with frozen concentrated lemonade. It's delicious and a wonderful warmer-upper before you go to bed!

MORRISONS

Indiana's Foremost
Apparel Shop
20 W. Washington St.

SOMETHING - NEW - DIFFERENT
NEW **Poodle Cut**
PERMANENT WAVE
No Kink—No Fuzz
Never Needs Setting
Guaranteed Until Your Hair Grows Out.
So Attractive—So Easy to Handle
NO APPOINTMENT NECESSARY
Turn Left from Elevator
ROYAL BEAUTY
401 Roosevelt Bldg.
4th Floor—Corner Ill. & Wash.
OPEN ALL DAY SATURDAY
Open Every Day 8 A. M. & Every Night

LUX
THE ARISTOCRAT OF
Laundresses & Cleaners
5301 WINTHROP AVE. PHONE BR-5461
"Bridge? . . . I'd love to!"
"No more Washday Blues for me now that LUX Service is back!"
Now, with a new building and modern equipment—LUX can offer you the best possible service and lasting beauty to your clothes. The LUX Laundry and dry-cleaning plant is the most modern in Indiana. It was constructed exclusively for laundry purposes with the very newest and best laundry equipment. Let LUX serve you today!
Your Choice of Expert Service
• ALL FAMILY FINISHED BUNDLES
• ROUGH DRY
• ECONOMY
• WET WASH
• FLAT IRONED
See Our New TV Program
TV Mail Bag Monday, 6:30 P. M.
OUR NEW BUILDING AND MODERN EQUIPMENT NOW ENABLE US TO ACCEPT SOME NEW CUSTOMERS
PHONE BROADWAY 5461

JANUARY

Clearance DAYS SALE

LIVING ROOM PIECES

(2) KROEHLER DAVENETTES, suitable for small apartments, makes into a comfortable bed. Fine quality mohair frize covering in gray or red. Orig. \$129.50 NOW \$98.50

(5) KROEHLER BED DAVENPORTS, with innerspring mattress, makes into a full size double bed. Fine quality mohair frize covering in green, gray, red, brown or beige. Orig. \$249.50 NOW \$229.95

(2) 2-Pc. SECTIONAL SOFAS, each section makes a single sleeping unit, in green or gray matelasse. Orig. \$239.95 NOW \$189.50

(2) LADIES' CHAIRS, green satin, foam rubber seats. Orig. \$69.95 NOW \$39.95

(1) PRINCESS CHAIR, gold velvet, foam rubber. Orig. \$59.95 NOW \$39.95

(1) PRINCESS CHAIR, red velvet, foam rubber. Orig. \$79.95 NOW \$49.95

(1) PRINCESS CHAIR, gray velvet, foam rubber seat. Orig. \$79.95 NOW \$49.95

(1) OCCASIONAL CHAIR, grey, foam rubber seat, solid mahogany legs. Orig. \$59.95 NOW \$39.95

(1) OCCASIONAL CHAIR, blue, foam rubber seat, solid mahogany legs. Orig. \$59.95 NOW \$39.95

(3) LOVE SEATS, matelasse, gold, grey or green. Orig. \$65.00 NOW \$54.95

(3) LOVE SEATS, matelasse, olive green, dark green, red. Orig. \$59.95 NOW \$49.95

(3) TV CHAIRS, grey, dark green, olive green. Orig. \$34.50 NOW \$24.95

TV CHAIRS, duran covered, red, chartreuse, dark green or yellow. Orig. \$14.30, NOW \$9.95

TELEVISION

(1) 19" SYLVANIA CONSOLE. Orig. \$529.95 NOW \$429.95

(1) 17" CROSLLEY CONSOLE. Orig. \$499.95 NOW \$399.95

(1) 17" WESTINGHOUSE CONSOLE. Orig. \$399.95 NOW \$299.95

• Shop Colonial

MONDAY NIGHT 'til 9

DINING ROOM PIECES

... taken from expensive suites

(1) CHINA CABINET, bleached mahogany. \$139.95 NOW \$89.95

(1) BUFFET, 50", bleached mahogany. \$149.95 NOW \$89.95

(1) BUFFET, 48", lime oak. \$119.50 NOW \$69.95

(1) BUFFET, 60", platina oak. \$179.95 NOW \$89.95

Free Westinghouse SEWING MASHINES

(1) WALNUT DESK TYPE, \$302 NOW \$269.95

(1) WALNUT REGULAR TYPE \$264 NOW \$189.95

(1) PORTABLE \$158 NOW \$129.95

FLOOR COVERINGS

COTTON BROADLOOM TWIST, heavy quality, dusty rose, 9-ft. width \$5.00 sq. yd.

ALL-WOOL-FACE BROADLOOM, two-tone, leaf design, 9' and 12' width. Beige, grey or green. 5.99 sq. yd.

9x12 WOOL RUGS, hand woven, imported from Puerto Rico \$98.00

GLAMORUG BROADLOOM, toast color, 9' width \$2.99 sq. yd.

27x51" REVERSIBLE WOOL THROW RUGS, blue only \$2.00 each

4'x6' COTTON THROW RUGS \$7.99 ea.

PLASTIC LINOLEUM, 9 and 12-ft. widths, assorted colors and patterns 98c sq. yd.

HOLLYWOOD HEADBOARDS, twin or full size with metal frame. Values from \$19.95 to \$39.95. NOW 1/2 PRICE

BEDROOM PIECES

ONE-OF-A-KIND PIECES LEFT FROM EXPENSIVE BEDROOM SUITES

(1) BED, full size, Platina oak \$49.95 NOW \$29.95

(1) VANITY and MIRROR, lime oak \$129.95 NOW \$89.95

(1) BED, Korina, full size. \$44.50 NOW \$29.95

(1) VANITY and MIRROR, Korina \$79.95 NOW \$49.95

(1) NIGHT STAND, bleached mahogany \$59.95 NOW \$29.95

(1) BED, grey walnut, full size \$39.95 NOW \$29.95

(1) BED, lime oak, full size \$59.95 NOW \$39.95

(1) VANITY and MIRROR, lime oak \$139.50 NOW \$98.50

(1) NIGHT STAND, Platina oak \$34.95 NOW \$24.95

(1) DOUBLE DRESSER and MIRROR, lime oak. \$139.95 NOW \$89.95

(1) 5-DRAWER CHEST, Birds-Eye Maple \$98.50 NOW \$59.95

(1) 5-DRAWER CHEST, Honduras mahogany \$99.50 NOW \$69.95

DOUBLE DOOR METAL WARDROBES \$30.50 NOW \$24.95

REDUCED FOR CLEARANCE INNERSPRING MATTRESSES and BOX SPRINGS TV N and FULL SIZE

Floor 5 sales, one-of-a-kind, some slightly used. Famous names such as Simmons, Englander, Superior Sleeprite.

• BUDGET YOUR PURCHASE If You Wish

Your choice of our 3-month plan—with no carrying charge—or our extended plan with up to 18 months to pay.

HOME ACCESSORIES

(10) DOOR MIRRORS, ivory frames \$4.95 NOW \$1.95

(7) STEP-ON HAMPERS. \$14.95 NOW \$10.95

(10) DOOR-ON-WALL HAMPERS \$3.95 NOW \$1.95

(4) BRASS LAMPS \$9.95 NOW \$7.95

(1) CHINA LAMP, beige \$18.95 NOW \$14.95

(1) MODERN LAMP, black and red. \$19.75 NOW \$14.95

(1) PLANTER LAMP, maple \$29.95 NOW \$19.95

(1) MODERN LAMP, black and white. \$27.95 NOW \$19.95

(1) CHINA LAMP, black \$21.95 NOW \$14.95

(1) CHINESE MODERN LAMP, grey \$21.95 NOW \$14.95

(1) MODERN LAMP, green and brass. \$22.95 NOW \$17.95

(1) HASSOCK, green. \$11.95 NOW \$8.95

(1) HASSOCK, green. \$19.95 NOW \$10.95

(1) HASSOCK, blue. \$14.50 NOW \$9.95

(1) HASSOCK, yellow. \$11.95 NOW \$8.95

(1) HASSOCK, red 36". \$31.95 NOW \$26.95

(1) HASSOCK, pink. \$8.50 NOW \$6.50

(1) HASSOCK, blue. \$9.95 NOW \$6.95

OTHER HASSOCKS as low as \$4.95

"Rainbow" Cannon Lakesville DOUBLE BLANKETS

Size 72x84 5% Wool

Bound with 100% 2" Rayon Satin Ribbon Binding

Red Originally \$8.95

Rose

Cedar

Blue

Green

NOW \$6.95

• BUDGET YOUR PURCHASE If You Wish

Your choice of our 3-month plan—with no carrying charge—or our extended plan with up to 18 months to pay.

FINE FURNITURE

Colonial

FURNITURE CO.

47 SOUTH MERIDIAN