

**THE CHIEF'S HOME**—This photograph, taken from the top of the Washington Monument in the nation's capital, shows the White House, with construction work going on in clear view. During the past year, the residence of the President has undergone extensive repairs. Workmen have proclaimed the place in "terrible shape" and expressed wonder that no serious accident ever took place because of the building's age.

### Chinese Doctor and Wife Hard Put to Stay in U. S.

CLEVELAND, O. (UP)—Drs. relatives still in the old country. At Ming and Lillie Cheng want to stay in America and their friends at Grace Hospital here want them to but there's a legal tangle to be cut before they can feel secure.

The doctors are Mr. and Mrs. and the parents of a 4-year-old son, Yao. They came to the United States from China several years ago to study under a temporary visa which now has expired. The hospital to which they planned to return was destroyed by fighting. Now they have nothing left there except a questionable future on Formosa.

Under American law limiting residence of Orientals, they are in line to be shipped back whether they want to go or not but Congressman-at-large George Bender, onstrating fire apparatus, had to be trying to get them a special sound a fire alarm when he dispensation through legislation discovered a burning barn. He in the House of Representatives, had left his demonstrator pumper. Recently they got a letter from at home.

### Geese for Rent

BENTON HARBOR, Mich. (UP)—Ed Miskotten has 500 geese which he offers for \$2.50 a season each for eating weeds around strawberry plants. The geese don't like strawberries but go for the weeds.

### A Bit Forgetful

PEABODY, Mass. (UP)—Leon and Falt, who goes around demonstrating fire apparatus, had to be trying to get them a special sound a fire alarm when he dispensation through legislation discovered a burning barn. He in the House of Representatives, had left his demonstrator pumper. Recently they got a letter from at home.

### STAPLES CHAMPIONSHIP

## RODEO

Oct. 6 Matinee  
2:30 P. M. and  
Evening 8:30 P. M.  
Oct. 7 & 8  
Evening, 8:30 P. M.

Prices: Matinee, Children Under 12—25c  
Evening, General Admission—85c  
Reserved Seats—\$1.20, \$1.80, \$2.20

Tickets at Ross-Babcock, Claypool Hotel

Starting Oct. 6. Tickets at Coliseum. Opens at 10 A. M. Daily

## Sensational New Policy!

SAME PRICE TO ALL



YOU CAN'T PAY MORE!

(We believe them to be)

\$18 Values

Now Only

\$8.50

### 65 STYLES, SHAPES AND COLORS

Lenses Ground to Your Exact needs. Bifocals if needed \$3 extra. The Frame of Your Own Choice at Same Prices—the Same Prices to Everybody.

Our SAME-PRICE policy on glasses is something most people never dreamed was possible! It is possible only because we were able to eliminate all middlemen's profits! We grind our own lenses, in our own big laboratories—make our own frames in our own shop. There is a BIG savings—and we pass it directly along to you. All we ask is \$8.50 for our glasses that we believe to be \$18.00 VALUES! Satisfaction guaranteed. Come in—get the glasses you need—and SAVE!

### \$1000.00 REWARD

We will pay \$1000.00 to anyone who can purchase glasses here for more than the prices quoted in this advertisement.

NO APPOINTMENT NEEDED

**KING Optical Co.**

OPTICIANS

Copyright King Optical Co. 1950

Founding 1904

BRANCHES IN MANY PRINCIPAL CITIES OF U. S. AND CANADA

REPAIRS  
Broken lenses duplicated  
Frames repaired and replaced  
Lowest prices!

OPTICISTS  
Prescriptions  
Filled at same price  
Your Prescription  
Filled Promptly

30 W. WASHINGTON ST.  
Suite 400 GOODMAN BLDG.  
Phone LI 6611

Hours: 9 A. M. to 5:30 P. M. Daily  
(Including Saturday)

Air conditioned for your convenience

# AYRES' DOWNSTAIRS STORE

There's no Price Penalty to Fashion in Ayres' Downstairs Store

## Versatile Fashions with a Flair



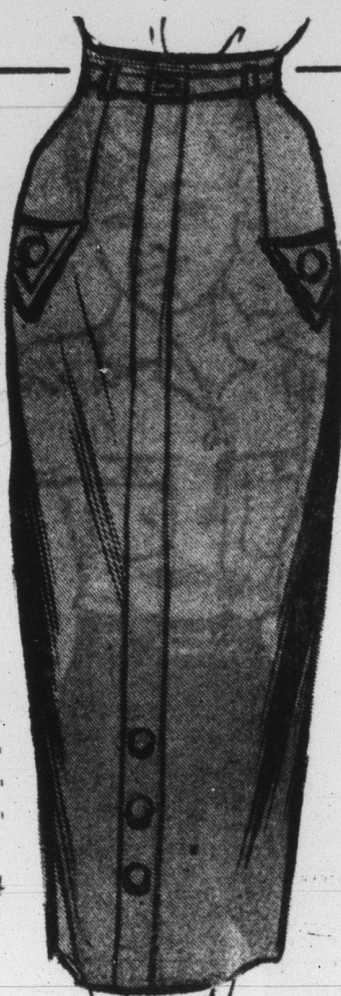
### Washable "Terry Lee Blouses"

1.98

- ★ Fantasie Crepe
- ★ Classic Collar
- ★ Matching Buttons
- ★ Triple-Action or Plain Back
- ★ Set-in Short Sleeves
- ★ Colors of: Gold, Green, Cranberry Red, Purple, White, Navy, Royal, Grey, Toast.

Sizes 32 to 38 and 40 to 44

SPORTSWEAR, Sections 2 and 3,  
Downstairs at AYRES'



### Special Purchase!

Regular 4.98  
Rayon Sharkskin Skirts  
2.98

Rayon sharkskin skirts beautifully detailed of fine crease-resistant suiting with 2 deep pockets, self trim buttons and belt, and a deep 2-inch hem. In Grey, Beige, Green and Blue. Sizes 10 to 18.

SPORTSWEAR, Sections 2 and 3,  
Downstairs at AYRES'



### Floppy Flattering Brim



Rayon  
Velveteen 3.98

New Flavor in Colors:

- |          |        |
|----------|--------|
| Black    | Coral  |
| Rust     | Purple |
| Brown    | Navy   |
| Ice Blue | Beige  |
| Red      | Jungle |

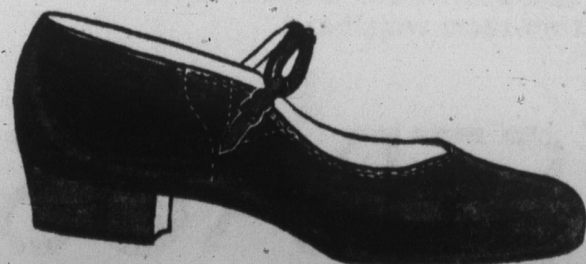
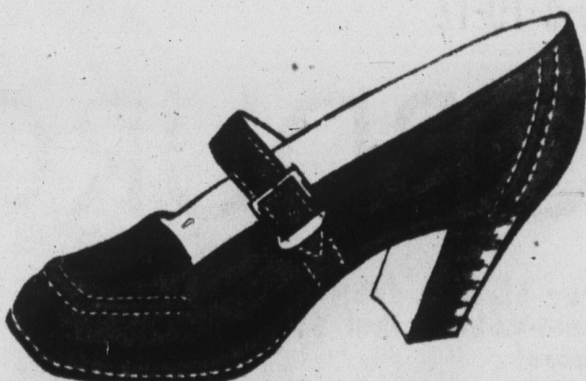
MILLINERY, Section 4,  
Downstairs at AYRES'

The Casual Comfort of Flats and Low Heels

## THE AMERICAN GIRL SHOE

Exclusive with Ayres' in Indianapolis

6.95 and 7.95



These American Girl flats and low heels are fashioned in a knowing way for your comfort and smart appearance... the casual loafer... the dressy suede leather-trimmed flat... or the low-heel suit shoe. All fit with ease into your wardrobe.

WOMEN'S SHOES, Section 2,  
Downstairs at AYRES'

CLOSED MONDAYS  
SHOP TUESDAY THRU SATURDAY  
9.00 to 5.25

Buy On AYRES'

ABC

## 100% Wool 7-oz. Jersey

First in Your Fashion Story...  
Leading a Wonderful Career

12.95

Look smart always in this versatile all-wool jersey dress. It has a tiny round collar, short raglan sleeves with turn-back cuffs, and jeweled buttons to match the color of the dress. Junior sizes 9 to 15. Colors of:

- |                |         |
|----------------|---------|
| ★ Heather Grey | ★ Gold  |
| ★ Red          | ★ Royal |

DRESSES, Section 1, Downstairs at AYRES'

MRS. ANITA  
TERS, of 5851  
Services at 2 p.  
Flanner & Buc  
Burial in Crow

MISS MARY  
N. Colorado Av  
a. m. tomorrow  
Lourdes Church  
Cross Cemetery.

JOHN GAAL  
Rural St. Serv  
Monday at Har  
Chapel. Burial

MRS. MARY  
ARD, 87, of 241  
St. Funeral at  
In Moore & K  
Burial, Crown

MRS. JOHN  
Perryburg, O.  
Hoffmann, man  
naeum Turners  
morrow in Witz  
in Perryburg.

CHARLES L.  
Kappes St. Ser  
tomorrow in  
Church. Burial

CHARLES A.  
1332 N. Alabam  
ployee of Penns  
Co. Services at 2  
at Flanner & L  
ary. Burial in De

For a Lin  
This New

Full

NY

Sheerm  
Ultra Shee  
If perfec  
sell for 1  
You SAV

Sheermode Pro

Size	Height
8 1/2	4'8" to 5'1"
9 1/2	4'8" to 5'2"
10 1/2	5'2" to 5'4"
11 1/2	5'2" to 5'6"
12 1/2	5'2" to 5'8"
13 1/2	5'2" to 5'10"
14 1/2	5'2" to 5'11"
15 1/2	5'2" to 5'12"
16 1/2	5'2" to 5'13"
17 1/2	5'2" to 5'14"
18 1/2	5'2" to 5'15"
19 1/2	5'2" to 5'16"
20 1/2	5'2" to 5'17"
21 1/2	5'2" to 5'18"
22 1/2	5'2" to 5'19"
23 1/2	5'2" to 5'20"
24 1/2	5'2" to 5'21"
25 1/2	5'2" to 5'22"
26 1/2	5'2" to 5'23"
27 1/2	5'2" to 5'24"
28 1/2	5'2" to 5'25"
29 1/2	5'2" to 5'26"
30 1/2	5'2" to 5'27"
31 1/2	5'2" to 5'28"
32 1/2	5'2" to 5'29"
33 1/2	5'2" to 5'30"
34 1/2	5'2" to 5'31"
35 1/2	5'2" to 5'32"
36 1/2	5'2" to 5'33"
37 1/2	5'2" to 5'34"
38 1/2	5'2" to 5'35"
39 1/2	5'2" to 5'36"
40 1/2	5'2" to 5'37"
41 1/2	5'2" to 5'38"
42 1/2	5'2" to 5'39"
43 1/2	5'2" to 5'40"
44 1/2	5'2" to 5'41"
45 1/2	5'2" to 5'42"
46 1/2	5'2" to 5'43"
47 1/2	5'2" to 5'44"
48 1/2	5'2" to 5'45"
49 1/2	5'2" to 5'46"
50 1/2	5'2" to 5'47"
51 1/2	5'2" to 5'48"
52 1/2	5'2" to 5'49"
53 1/2	5'2" to 5'50"
54 1/2	5'2" to 5'51"
55 1/2	5'2" to 5'52"
56 1/2	5'2" to 5'53"
57 1/2	5'2" to 5'54"
58 1/2	5'2" to 5'55"
59 1/2	5'2" to 5'56"
60 1/2	5'2" to 5'57"
61 1/2	5'2" to 5'58"
62 1/2	5'2" to 5'59"
63 1/2	5'2" to 5'60"
64 1/2	5'2" to 5'61"
65 1/2	5'2" to 5'62"
66 1/2	5'2" to 5'63"
67 1/2	5'2" to 5'64"
68 1/2	5'2" to 5'65"
69 1/2	5'2" to 5'66"
70 1/2	5'2" to 5'67"
71 1/2	5'2" to 5'68"
72 1/2	5'2" to 5'69"
73 1/2	5'2" to 5'70"
74 1/2	5'2" to 5'71"
75 1/2	5'2" to 5'72"
76 1/2	5'2" to 5'73"
77 1/2	5'2" to 5'74"
78 1/2	5'2" to 5'75"
79 1/2	5'2" to 5'76"
80 1/2	5'2" to 5'77"
81 1/2	5'2" to 5'78"
82 1/2	5'2" to 5'79"
83 1/2	5'2" to 5'80"
84 1/2	5'2" to 5'81"
85 1/2	5'2" to 5'82"
86 1/2	5'2" to 5'83"
87 1/2	5'2" to 5'84"
88 1/2	5'2" to 5'85"
89 1/2	5'2" to 5'86"
90 1/2	5'2" to 5'87"
91 1/2	5'2" to 5'88"
92 1/2	5'2" to 5'89"
93 1/2	5'2" to 5'90"
94 1/2	5'2" to 5'91"
95 1/2	5'2" to 5'92"
96 1/2	5'2" to 5'93"
97 1/2	5'2" to 5'94"
98 1/2	5'2" to 5'95"
99 1/2	5'2" to 5'96"
100 1/2	5'2" to 5'97"
101 1/2	5'2" to 5'98"
102 1/2	5'2" to 5'99"
103 1/2	5'2" to 5'100"