

Trouble Just Keeps On Piling Up—

# Anderson Is Crippled By Shutdown Of Power Plant

## Explosion-Fire Gives Busy City New Headache

Other Problems Plague Residents

By ANDY OLOFSON

ANDERSON, June 20—This turbulent industrial city of 46,809 persons today awoke with new headaches.

Its factory activity curtailed, the city was feeling the effects of the fire-explosion in the municipal power plant that paralyzed normal activity yesterday.

Today's headaches: ONE—Threat that fire might break out while the city is still handicapped by low water pressure.

TWO—Lack of industrial power for 33 of the city's 35 manufacturing plants, idling thousands of workers.

THREE—Intensified turmoil over the hot local issue—now before the Indiana Supreme Court—of proposed \$6.5 million rebuilding of city's 30-year-old power plant.

FOUR—Continued tie-up of city's public transportation system as bus-driver strike entered the 53d day.

FIVE—Slight realization of Civil Defense problems from powerless, water-hoarding hours yesterday when utilities were knocked out.

Fire Chief Earl Toombs today said, "We certainly were lucky that no serious fire broke out during the night. I don't know what we would have done with the weak pressure in the mains."

"The situation is somewhat improved today, but we still don't dare build up too much pressure in those old mains."

Restoring Service

Meanwhile normal electric service for nonindustrial purposes was being restored to the whole city after one sector in the heart of the city remained blacked out all night.

Power once more was available for the electric pumps that pro-



SEARED CABLES—Anderson utility officials Frank C. Yarling and Arthur Hoesek check flame-stripped cables that caused rupture in city-owned municipal power plant yesterday.

vide the city's water supply from four wells. The pumps were completely idled for more than three hours yesterday.

The power breakdown occurred yesterday afternoon when an old cable in the basement of the power plant exploded. Flames quickly engulfed the other cable lines.

Fred Biddinger, veteran of 18 years experience at the plant, said:

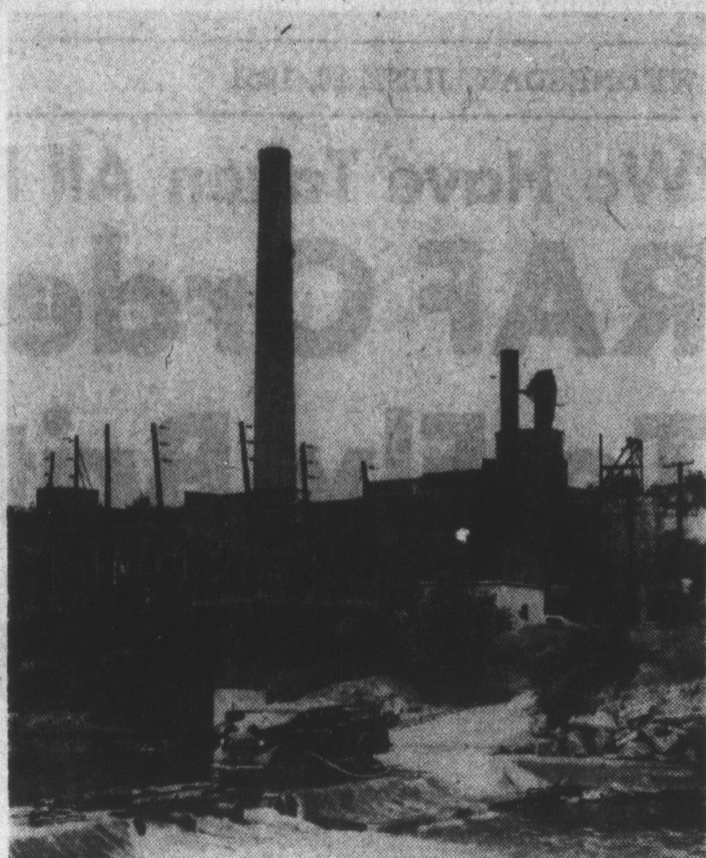
"I knew it was that old cable. I started to cut off switches right and left," he said.

Quick arrival of firemen kept the blaze from spreading throughout the whole plant.

Partial electrical service was restored at 5 p. m. with all but the blacked-out heart of the city receiving limited power three hours later.

Firemen Called Back  
Firemen later were called back to the plant to extinguish a flash repeat of the blaze. It was unnecessary to cut off the restored power.

Potentially the most serious problem in yesterday's crisis was



EMERGENCY WATER SUPPLY—Fire trucks pump water from White River to refill boilers of power plant so that big steam turbine generators could be started after emergency cable repairs.

Thirty auxiliary police aided regulars in untangling the snarl.

AUXILIARY firemen — after the fire — were rushed to St. John's Hospital where lack of

power stalled elevators and other normal services. Firemen helped carry patients up stairs for necessary medical or surgical attention.

EAST SIDE JERSEY DAIRY, sons attending the annual Church

Some went as far as Pendleton violence or underworld activity.



CANDLELIGHT VISIT—Mr. and Mrs. Wilbur G. Austin chat with Mr. and Mrs. James R. Day, newlyweds who recently returned from honeymoon. The Days' mid-town home was cut off from electricity all night, stopping the refrigerator and blocking out new television set.

of God rally held services out-of-State Police post to get extra doors when the lights in their water.

RETAILERS owners were established in soup-black mid-

most worried about water crisis, town area to prevent any possible

APPROXIMATELY 10,000 per-

SPECIAL POLICE patrols were

Some went as far as Pendleton violence or underworld activity.

## Six Injured in Head-On Crash as Power Fails

Times State Service

ANDERSON, June 20—Six persons, injured in a head-on highway crash, were taken to St. John's Hospital here during the middle of yesterday's municipal power crisis.

Auxiliary firemen helped carry wreck victims into the hospital which had only limited power provided by an auxiliary power unit.

Cars driven by Ira Bush, 25, of Muncie, and Lawrence E. Arnold, 73, of Winton, Cal., crashed head-on on Ind. 67 near Chesterfield.

State police say a tire blew out on the Bush car while it was traveling at a high speed.

Also hospitalized were Mr. Arnold's wife, Ella, and the three passengers in the Bush car. They were Mrs. Juanita Bush, 19, the driver's wife; Nola Bailey, 40, and Max Koger, 19.

Deputies Work All Night

Sheriff Joe L. Brogdon kept his deputies on all-night vigil at the blacked-out county jail. Only the

Police Raid Four Tipton Clubs

Times State Service

TIPTON, June 20—Social life at four of this town's fraternal clubs lost some of its charm last night as state police raided them and confiscated their gaming equipment.

The Moose Lodge lost two horse racing machines and two diggers. A digger is a glass enclosed model steam shovel, which can be operated after inserting a coin. A deft operator can win a prize by the skillful operation of wheels which control the model scoop.

At the Knights of Columbus, two diggers were taken. At the American Legion, two horse machines and one digger. The Elk's Club lost two horse machines.

The Tipton County prosecutor who accompanied state police and excise officers said today he was planning to prefer charges against trustees of the clubs.

eerie flicker of candles shown through the cell block as the deputies stood by for emergency calls.

Power cutoff in downtown area also nullified burglar alarm systems, causing police and the sheriff much concern.

However, no break-ins were reported.

Local police also were handicapped until 11:30 p. m. by lack of power to operate police radio system.

The only radio communication was between police car radios or by telephone relay to nearby Alexandria which made its police radio available for sending instructions to the Anderson law enforcement officers.

700-Voice Choir Sings

One of highlights of blacked-out Church of God convention was a musical tribute by 700-voice choir to the late B. E. Warren, who composed more than 200 hymns for the church.

The songfest was led by Fred Shackleton, Portland, Ore.; Prof. Cecil Hartelle, Anderson, and Herbert Thompson, Flint, Mich.

STATIONERS

18 N. PENNSYLVANIA ST. MA. 1471

OFFICE SUPPLIES

SOCIAL STATIONERY

GREETING CARDS

DECORATIONS & FAVORS

LEATHER GOODS

DRAFTING MATERIALS

STATIONERS

18 N. PENNSYLVANIA ST. MA. 1471

ALSCO ALUMINUM

Combination Self-Storing

SCREEN and STORM

WINDOWS and DOORS

BEAUTIFUL • RUSTPROOF • LIFETIME

Small Monthly Payments IMMEDIATE DELIVERY MA.

Start August 15, For Free Estimate Call Any Time

ALSCO OR 5554

934 South East St., Indianapolis

Indiana's leading and largest Storm Window and Door Company

Easy Terms Available

Open Even. Till 9

Lighted Parking Lot in Rear

RAINIER

Furniture Co.

4214 College Ave. HU. 1376

LET'S TALK ABOUT Your Home

By LOUIS RAINIER

FRENCH ACCENT

One reason for the increasing popularity of French Provincial furniture is its adaptability. Its beauty of line and design without the elaborate carving and decoration of the more formal French Period furniture gives it that quality of livability and home-like charm so desirable in homes of today.

The wood in the originals was usually beech or walnut, and these are used consistently in present-day reproductions. There is a close kinship between French Provincial and our own Early American. The two styles can be combined with a very charming effect.

It is an excellent choice for the dining room. Walls painted in muted tones of red, yellow or blue . . . or wallpaper simulating the lovely old French papers . . . would make an effective background for a wide sideboard with open shelves decked with colorful china, an oblong stretch table and ladder-back chairs with luxurious cushions. Draperies might be small-patterned print matching the chair cushions or fluffy white organdy tie-back curtains, according to your choice.

A small serving table with brass candlesticks and toile pieces would fit in beautifully.

French Provincial is richly effective in living rooms and bedrooms as well.

Won't you come in and talk over your furnishing and decorating problems with us? We have scores of ideas that we know will interest you.

SHOP EARLY . . . SHOP AT 9:00 A.M.

**L. S. Ayres & Co.**

**June specials**

CLOSED MONDAYS  
SHOP TUESDAY THRU SATURDAY  
9.00 to 5.25

All Items Subject to Prior Sale

SORRY, NO MAIL OR PHONE ORDERS

discontinued

dinnerware patterns

1/4 to 1/3 off

Your opportunity to add pieces to your dinnerware set at reduced prices. A few complete services included. Patterns listed are being discontinued, but replacement pieces may be ordered at any time. Many complete sets available, priced from 5c to 13.95. Single pieces, sets from 4.30 to 169.50.

Patterns included:

Diana	Ardenne	Passion Flower
Embassy	Buttercup	Rosetta
Governor Clinton	Magnolia	Chatham Lilly
Kenmore	Cornelia	Green Wedding Band
Selma	Hibiscus	Maroon Wedding Band
Ridgewood	Apple Branch	White Wedding Band
Yellow Palomar	Bird of Paradise	Romance
Fiesta		

Assorted Pieces in Sparkling Stemware

Envoy, originally 1.25 each . . . . .	83c
Karina, originally 1.80 each . . . . .	1.20
Vale Green, originally 1.80 each . . . . .	1.20
New Era, originally 1.65 each . . . . .	1.10
Nobility, originally 2.50 each . . . . .	1.67
Crystal Garland, orig. 75c each . . . . .	49c

Ayres' China and Crystal, Fifth Floor

assortment of decorative accessories

1/4, 1/3, 1/2, off

Figurines, picture frames, serving accessories . . . many delightful accents for the home.

Ayres' Gifts and Decorative Accessories, Fifth Floor

ecru linen mats

regularly 39c . . . . . 29c each

Hemstitched, Irish linen mats, 12 x 18 inches. Matching napkins, regularly 50c each, 29c each.

Ayres' Linen and Towels, Fifth Floor

embroidered linen place mat sets

4 mats, 4 napkins, 1 runner, regularly 10.95 set . . . . . 7.95 set

8 mats, 8 napkins, 1 runner, regularly 19.95 set . . . . . 14.99 set

Dainty as a bride's bouquet . . . pure, natural linen mats and napkins delicately embroidered with color.