

MONDAY, OCT. 2, 1950

Blackwood on Bridge—

## Convention Permits Lighter Opening When Not Vulnerable

WHEN YOU ARE not vulnerable, the strategic advantages of opening one no trump justify the taking of considerable risk.

For this reason the Blackwood system permits much lighter opening no trump bids not vulnerable than when vulnerable.

Here are the requirements. You should have as much as one third of the high cards but less than 40 per cent. This means two and one-half plus to three plus honor tricks of 13 to 15 points in the Work count or eight and one-half to 10 points in the Four Aces count.

The distribution must be 4-3-3-3, 4-4-3-2 or 5-3-3-2. Any five card suit must be a minor. In other words, with a five card major in one of these distributions, it is usually preferable to open the major. Your hand may contain a worthless three card suit.

If you have a doubleton it should be headed by the jack or better. Six of the 20 honor cards are "normal." If the hand contains more, you may lighten the requirements. If it contains less, you should be in the upper limit.

### One Third Toppers

HERE IS a point for the responder to remember. If there is no long suit in his hand (five or more cards), he should figure

South dealer

Neither side vulnerable

NORTH

Mr. Masters

S-K 4

H-A 10 5

D-7 6 5

C-A Q 9 4 3

WEST

Mrs. Keen

S-A J 9 8 6 3

H-9 3 2

D-3 8 2

C-6

EAST

Mr. Abel

S-10 2

H-Q J 6 4

D-Q 10 4 3

C-K 5 2

SOUTH

S-Q 7 5

H-K 8 7

D-A K 9

C-J 10 8 7

The bidding:

SOUTH WEST NORTH EAST

1 N T Pass 3 N T All Pass

about two-thirds of the high

cards for the partnership to have

a fair play for game.

Responder must never forget

that his partner's non-vulnerable

no trump opening guarantees

only about one-third of the high

cards.

Therefore, he himself should

have that same amount of

strength at a minimum—before

deciding on a game contract.

In today's hand Mr. Masters

had an opening bid and so he

took Mr. Dale straight to game.

If he had been interested in

playing game at either major, he

would have bid two no trump

which is forcing to game and

requires the opener to show a

four-card major at the three level.

Mr. Dale had to make a nice

play at the first trick to realize

his contract. Mrs. Keen opened

the eight of spades and the old

boy let Mr. Abel hold the trick

with the 10.

This strategy worked because

when Mr. Abel got in later with

the king of clubs, he found the

spade communication line to his

partner had been cut.

Rev. Schwein

Reads Rite

Nadine Schneider

Is Married

Miss Nadine Schneider became

the bride of Raymond E. Dobbs

at 7:30 p. m. Saturday. The rite

was read in the Woodside Meth-

odist Church by the Rev. W. M.

Schwein.

The parents of the couple are

Mr. and Mrs. John J. Schneider,

4516 Young Ave., and Mr. and

Mrs. Milton E. Dobbs, 321 S.

Temple Ave.

The attendants included Mrs.

Dorothy Kerr, Baltimore, Md.,

matron of honor; Miss Joan Mil-

ler, maid of honor; Miss Dolly

Wiese and Mrs. Mary Helen

Walker, bridesmaids; Joan Bobbs,

flower girl, and Charles Kerr,

ringbearer.

Attendants

Mr. Dobbs' attendants were

John Edwards, best man, and

John Bruckman, Harry Stewart,

Felix Scruggs, Don Dobbs and

Jack Schneider, ushers.

The bride wore a candlelight

sat in gown which had a lace

veil and cathedral train. Her

silk illusion veil was held with a

seed pearl tiara. She carried

white rosebuds and stephanotis.

The bride's attendants were

dressed alike in satin, frocks of

apple green, lemon yellow, aqua,

gold and fuchsia.

A reception followed the rite

at Whispering Winds. The couple

left for a trip to Chicago.

Annual Party Set

By Mothers Club

The annual fall card party of

the Newman Mothers Club will be

held at 1:30 p. m. Wednesday in

Block's Auditorium.

Proceeds of the party go toward

helping the Newman Club of But-

ler University. The group recently

furnished a club room for the

student members there.

Mrs. Frank Thompson and Mrs.

William Rohr are in charge of

the arrangements.

KEPT  
FLAVOR FRESH!  
BECAUSE  
IT'S VACUUM PACKED

Brooks  
Tangy  
BARBECUE  
SAUCE

Made from fresh  
tomatoes... with  
a flavor that's  
so good it's  
called the "Tangy"  
sauce. Once you  
try it, you'll  
understand.

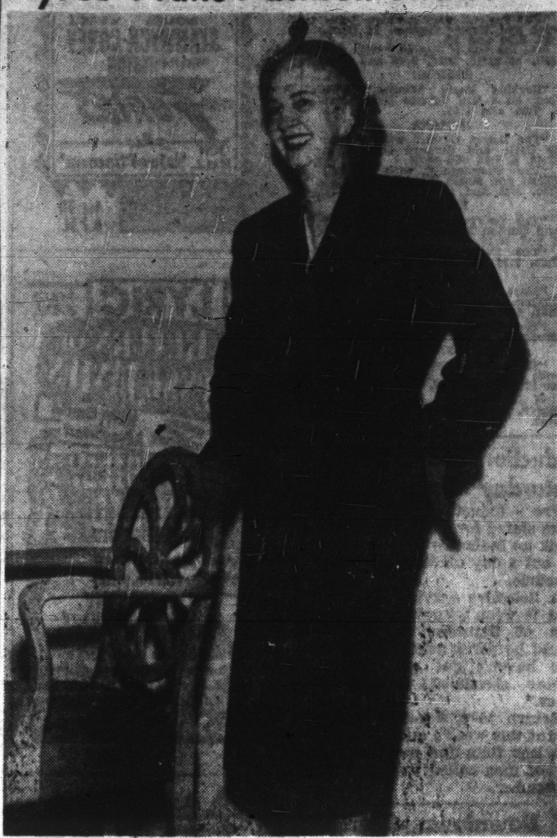
BY THE MASTERS OF  
CATSUP

CHECK TORMENT OF  
ITCHY TOES  
MEXSANA

THE INDIANAPOLIS TIMES

PAGE 74

## Ayres' Plans Fashion Shows



This yarn-dyed gray flannel suit will be one of the highlights of the Delson Fashion Show at Ayres' tomorrow. The notched collar, self-fabric belt and turned back cuffs are trim accents to the tailored lines. (\$89.95). Delson styles are made in proportioned sizes, will be shown twice at 12:15 and 2:15 p. m. in the Coat and Suit Department on the third floor.

### Sorority Names

#### Charter Members

Members of the newly organized Iota Chapter, Alpha Delta Tau Sorority, were initiated recently by members and officers of the Gamma Chapter, Noblesville.

The ceremony followed a dinner in the Hawthorn Room. Chapter members are Mesdames Charles R. Gregg, Estol V. Humphrey, Joseph Leonard, Joseph Fager, Sidney Smock and Elsie M. King. Misses Naomi Jones, Isabelle Mink and Edna Fager.

### Committees Listed

Mrs. Milton Lorton is general chairman of the events. Mrs. William H. Shreve is serving as the ticket chairman and Mrs. Russell G. Justice and Mrs. Irwin Ward are in charge of the "coffee" assisted by Mesdames Thomas Stirling, Robert Foster, Charles Hamilton, John M. Gailey and Willard M. Wickizer.

Arrangements have been made to care for children during the programs.

### YMCA Director

#### Will Speak

The parents and teachers of the North Unitarian Church and anyone interested in learning what the Character Research Project can mean to a child are invited to hear Morrill W. Payne, director of the Northside YMCA.

He will speak at 8 p. m. tomorrow in the home of Mr. and Mrs. Roger Kahn, 6113 Spring Mill Road. Mr. Payne is a recent member of Union College Laboratory of Character Research.

His topic will be "Making Religious Education Practical at Every Age Level."

### Couple to Have

#### Anniversary Party

Mr. and Mrs. Karl E. Stienecker, 1330 N. Grant St., will have open house from 3 to 5 p. m. Sunday. They will celebrate their 25th wedding anniversary.

There are no invitations.

### Benefit Event

A pillowcase card party will be sponsored by the Christamore Women's Club from 1:30 to 4:30 p. m. tomorrow in the Food Craft Shop. Mrs. Harvey Stafford is chairman.

Eat Well for Less—

## Noted Chef Makes Dish Of Macaroni

### Cheese Is Added To Staple

By GAYNOR MADDOX

ECONOMY and macaroni go together, of course. But macaroni dishes also belong in the fine eating class.

Francisco Carlos, noted chef at the Town House in Los Angeles.

This is the first of six special articles on macaroni, spaghetti and egg noodles.

prides himself on his Macaroni au Gratin. It's rich and full-bodied the way he prepares it.

Here's his recipe. Carlos cautions homemakers not to top the dish with grated Parmesan cheese because it would brown too much before the dish is done.

FRANCISCO CARLOS' MACARONI AU GRATIN

One tablespoon salt, three quarts boiling water, eight ounces elbow macaroni, one-half cup butter or fortified margarine, one-half cup flour, one quart milk, one-half pound sharp cheddar cheese, one-half cup minced young onions, two teaspoons salt. Add salt to rapidly-boiling water. Gradually add macaroni so that water continues to boil. Cook uncovered, stirring occasionally, until tender.

Drain in colander. In a large heavy skillet, melt butter or fortified margarine. Stir in flour and let simmer for 10 minutes, stirring occasionally. Add milk, cheese, onions and salt; simmer 10 minutes. Add cooked macaroni to sauce and mix thoroughly. Place in individual casseroles. Bake in moderate oven (350 degrees F.) 20 minutes. Serve immediately. For six to eight.

### Tuesday's Menu

BREAKFAST: Orange or grapefruit juice, oatmeal, soft cooked eggs, enriched toast, butter or fortified margarine, coffee, milk.

LUNCHEON: Creamed dried beef on toast, canned peas, enriched bread, butter or fortified margarine, stewed pears, tea, milk.

DINNER: Tomato juice, macaroni au gratin, buttered carrots, French green beans, cabbage and green pepper salad, hot gingerbread, applesauce, coffee, milk.

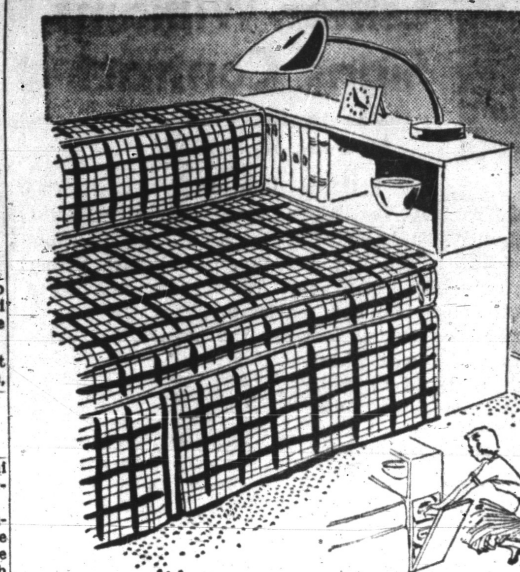
## DISHING the DIRT

By MARGUERITE SMITH  
Times Garden Editor

Q—Is it safe to use leaves from a dying elm tree in compost?

A—The answer to your question depends on several factors. Tree experts would surely tell you to burn them. But I would save them if (a big if) there are not healthy elms near you that might be infected. Disease carrying insects do feed on elm leaves on the tree and so infect healthy trees. But compost properly made will get rid of disease. And most soils are literally starving for the humus we burn leaves. Some authorities suggest that our soil robbing practices are the basis for our tree troubles. Save the leaves if it seems wise after you have considered these points. But just to be safe, don't use them around or near healthy elms.

## Make-It Yourself End Table



By ELIZABETH HILLIER

IF THERE'S NO more than 12 inches to spare between the end of the studio couch and the wall, it's still room enough for this piece of furniture.

It's an end table with a bookshelf, and a bedding bin, and you can make it yourself. Never mind about a place to saw and to keep full-length lumber. A lumber dealer can cut the parts of the end table-storage bin for you of 3/4-inch plywood, and his accurate cutting makes the rest easy.

BUT FIRST you must determine the exact measurements of the pieces as you want them by measuring the studio couch—the top of the bin should be at couch level and the shelf above it should be as high as the bolsters, or arm chair high. Since couches and bolsters vary in height, no measurements except your own can be right. Take this drawing, with the measurements, to the lumber dealer. Plan to hinge the front of the bin so it opens outward and down.

### Homemakers Club Meets Tomorrow

The Crooked Creek Homemakers Club will meet at 1 o'clock tomorrow afternoon in the home of Mrs. Vaughn Bramel, 5815 N. King Ave.

Mrs. Ollie Leonard will speak on gift wrapping, gift suggestions and holiday decoration.

### Women Till Soil

LONDON—Women outnumber men by 5 per cent, among the 75,000 volunteers lending a hand for harvesting on British farms today.

Since couches and bolsters vary in height, no measurements except your own can be right.

Take this drawing, with the measurements, to the lumber dealer. Plan to hinge the front of the bin so it opens outward and down.

A lumber dealer can cut the parts of the end table-storage bin for you of 3/4-inch plywood, and his accurate cutting makes the rest easy.

BUT FIRST you must determine the exact measurements of the pieces as you want them by measuring the studio couch—the top of the bin should be at couch level and the shelf above it should be as high as the bolsters, or arm chair high. Since couches and bolsters vary in height, no measurements except your own can be right.

Take this drawing, with the measurements, to the lumber dealer. Plan to hinge the front of the bin so it opens outward and down.

A lumber dealer can cut the parts of the end table-storage bin for you of 3/4-inch plywood, and his accurate cutting makes the rest easy.

BUT FIRST you must determine the exact measurements of the pieces as you want them by measuring the studio couch—the top of the bin should be at couch level and the shelf above it should be as high as the bolsters, or arm chair high. Since couches and bolsters vary in height, no measurements except your own can be right.

Take this drawing, with the measurements, to the lumber dealer. Plan to hinge the front of the bin so it opens outward and down.

A lumber dealer can cut the parts of the end table-storage bin for you of 3/4-inch plywood, and his accurate cutting makes the rest easy.

BUT FIRST you must determine the exact measurements of the pieces as you want them by measuring the studio couch—the top of the bin should be at couch level and the shelf above it should be as high as the bolsters, or arm chair high. Since couches and bolsters vary in height, no measurements except your own can be right.

Take this drawing, with the measurements, to the lumber dealer. Plan to hinge the front of the bin so it opens outward and down.

A lumber dealer can cut the parts of the end table-storage bin for you of 3/4-inch plywood, and his accurate cutting makes the rest easy.

BUT FIRST you must determine the exact measurements of the pieces as you want them by measuring the studio couch—the top of the bin should be at couch level and the shelf above it should be as high as the bolsters, or arm chair high. Since couches and bolsters vary in height, no measurements except your own can be right.

Take this drawing, with the measurements, to the lumber dealer. Plan to hinge the front of the bin so it opens outward and down.

A lumber dealer can cut the parts of the end table-storage bin for you of 3/4-inch plywood, and his accurate cutting makes the rest easy.

BUT FIRST you must determine the exact measurements of the pieces as you want them by measuring the studio couch—the top of the bin should be at couch level and the shelf above it should be as high as the bolsters, or arm chair high. Since couches and bolsters vary in height, no measurements except your own can be right.

## Family Planning Is Basic

### Parenthood Training Program Begins

By AGNES H. OSTROM

"People plan for everything today. There is no reason why they shouldn't plan for their families too," believes Mrs. Philip Pillsbury.

The Minneapolis woman, executive committee member of the National Planned Parenthood Federation of America, is in the city through tomorrow conducting a training seminar for the 1951 fund-raising campaign of the national organization.

Volunteer workers in the seven-state central region, including Indiana, are attending the two-day session in the Hotel Lincoln.

### War Impetus

Planned parenthood is not a limiting program, emphasized Mrs. Pillsbury, mother of two teen-age boys. "Families who can well afford five children over a period of 10 years can't stand the physical, economic and social strain of five youngsters in five years."

Mrs. Pillsbury said it wasn't known yet how this war would affect the local clinics. "During the last war direct service became even more important with an increase in the transient population."

Goal set for the February campaign is \$750,000. Eighty-five per cent remains within the communities. Mrs. E. M. McNally, finance chairman of the local group, will head the campaign drive here.

### Slight Decrease

WASHINGTON—Statistics show that there are nine-tenths as many women working in industry today as during World War II.

Wasson's is open Monday thru Saturday, 9:30 A. M. to 5:00 P. M.

Here's a REAL Dream-Team...  
in these Velvet Trimmed  
Rayon Checked  
Weskit Suits  
12.95  
IT'S AN EVER-SO-CLEVER Beau Brummel weskit with velvet-trimmed "tuxedo" lapels PLUS a perfectly stunning arrow-narrow skirt spiced with the same eye-catching velvet. Campus or career-wise, they're divided—or dittoed! Wrinkle-resistant and year-round wearable rayon suiting in combinations of red and black, green and black, white and black. Sizes 10 to 18.  
Blouse Sketched 5.95  
Wasson's Sport Shop, Second Floor