

Mrs. Samuel S. Rumford... first step in making grape jelly.

It's Time to Make Jelly

By JEAN TABBERT

IT'S JELLY-MAKING time, with grapes and plums at their lushest of the year.

Don't make the sweet bread topping in large quantities, though, it produces a poor product. That's what Mrs. Samuel S. Rumford, 8262 E. 10th St., advises.

Mrs. Rumford has eight bearing grape vines on her half acre lot, and a dozen new ones her husband planted this year. She annually puts up the purple fruit for her family.

Besides the amount warning,

Mrs. Rumford also says not to use too heavy a cloth when the fruit is hung up to drain.

Choose medium-weight, un-

allow at least an hour to drip. Don't squeeze the juice out of the bag because it leaves the jelly cloudy, Mrs. Rumford stresses.

She's the mother of Mrs. Gayle Christwell, assistant home demonstration agent, and a son, Samuel Jr., who'll enter Purdue University this year.

Two of her favorite recipes follow.

GRAPE JELLY

Wash three pounds of fully ripe grapes. Partially cover with water and simmer for 10

minutes, the kettle covered. Place in a jelly cloth and drain. Proportions of the liquid for making jelly: Five cups juice, seven cups sugar, one box powdered pectin. Then follow the cooking directions of the brand of pectin used.

Make a heavy sirup of one pound sugar for each pound of plums used. Add the plums to the hot sirup and cook until the plums are clear and the sirup jelled.

Pack in hot sterilized jars and cool.

Shellac Use Given

Give your bread and vegetable boards a thin coating of shellac before using them to prevent discoloration and to ward off penetration of liquids which will deteriorate wood fibers.

Make Coffee In Clean Pot

The best coffee comes from a really clean coffee pot, according to food specialist. For this reason many homemakers prefer coffee makers made of porcelain enamel. They are easy to keep clean and every-day care is extremely simple. A porcelain enameled pot requires only a thorough washing in warm, soapy water after each using.

However, even a porcelain

telltale traces of coffee stain after a period of regular use.

To remove these discolorations fill the coffee pot with water. Add two or three tablespoons of household bleach and allow to soak for 15 minutes.

Then wash thoroughly with soapy water and rinse with clear hot water.

Air Queen Named

REYKJAVIK, Iceland — Miss Margaret Gudmundsdottir, airline hostess, was chosen Miss Air-

ways of 1950 in an international contest at the London airport.

Blackwood on Bridge— East Follows Rules Blindly; Loses Trick

NOW AND THEN you hear a player say with pride, "I NEVER lead from a king." This is supposed to indicate what a sound player he is.

Actually, it is pride misplaced. It is the same as saying, "My game is dull and unimaginative."

East in today's deal was such a player. They weren't going to catch him leading away from a king. This doubtful virtue resulted in South making his second round call of only three hearts.

Pitches Spade

HOWEVER, there they were in game and West opened the 10 of jack of diamonds. He gave up a

diamonds, and spade ruffed one on the board. He and claimed the rest.

You have figured out, of course, and lived all her life.

North dealer. Neither side vulnerable.

NORTH

S—J 9 4

H—A J 6 4

D—K 6

C—A K Q 4

WEST EAST

S—Q 7 6 5 S—K 10 8

H—K 9 H—8 7 5

D—10 4 3 D—A Q 8 7 5

C—10 9 6 5 C—J 8

SOUTH

H—Q 10 3 2

D—J 9 2

C—7 3 2

The bidding:

North East South West

1 C 1 D 1 H Pass

4 H All Pass

Of course this gave South plenty of time to extract trumps (finishing against West's king) and pitch a spade from dummy on his good

jack of diamonds. He gave up a

diamonds, and spade ruffed one on the board. He and claimed the rest.

You have figured out, of course, and lived all her life.

that East should have shifted to the eight of spades at the second trick. Yes, leading away from his king. It was clear that his side would win, no club tricks. They would win no hearts either unless West had both king and queen, which was very doubtful.

Additional Gimmick

TWO DIAMOND tricks could be won and East should have reasoned that if the necessary two additional tricks were avail-

the spade department.

There was the additional gimmick that the spades had to be taken while East still had control of the diamond suit.

If the hand had been defended in this manner South would have found it impossible to avoid the loss of two diamonds and two spades for down one.

Marks 110th Year

CHIRIQUI, Panama — Senora Pastora Palacios Alvarado recently celebrated her 110th birthday here, where she was born

and lived all her life.

L. S. Ayres & Co.
FR anklin 4411

CLOSED MONDAYS
SHOP TUESDAY THRU SATURDAY
9.00 to 5.25

Beginning
Our
5th
Year
of
Monday
Closing

WITH TWO DAYS OFF

TOGETHER EVERY WEEK*

FOR EVERYONE AT AYRES'

*Except for four Mondays

before Christmas

L. S. Ayres & Co. FR anklin 4411

Designed for the Woman
who wears half-sizes...

by FRANCIS DEXTER

by ANNE MITCHELL

by MARGUERITE

'All exclusive with Ayres'

To help you lead a busy life in an easy manner.

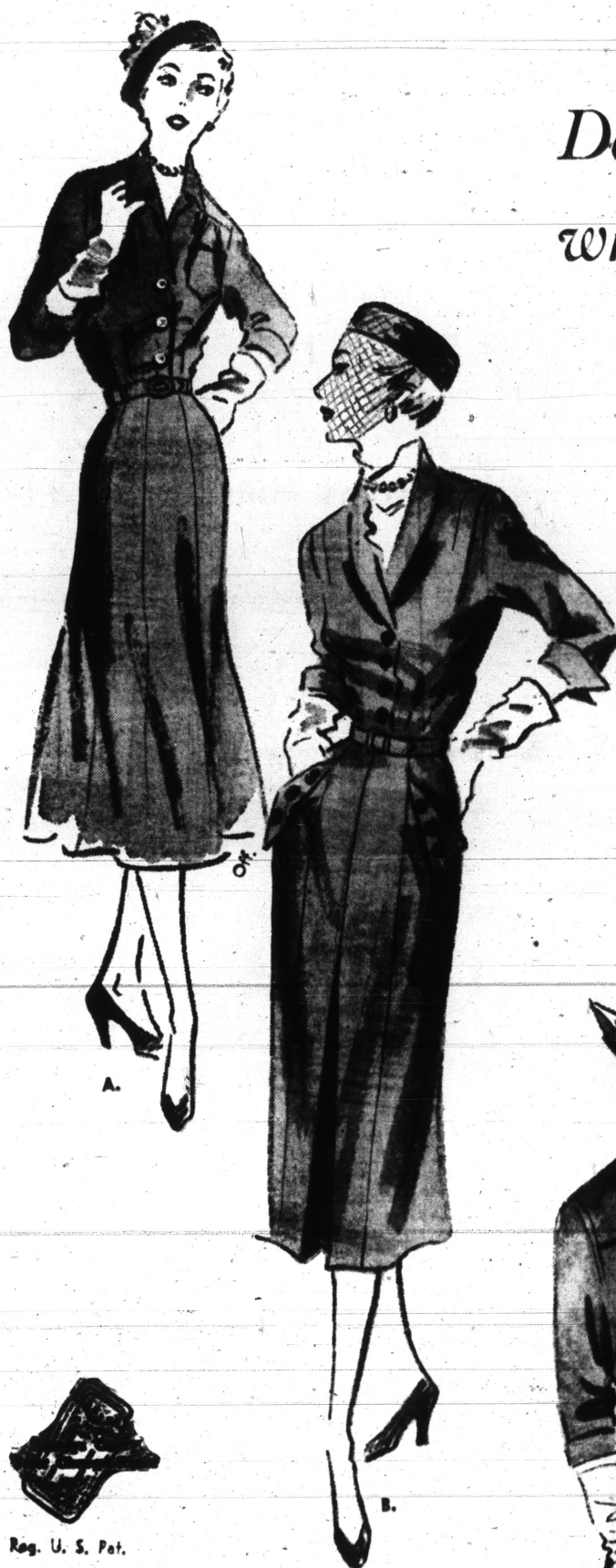
Casual, soft, these dresses are styled with

special regard to those important touches

of careful tailoring, fine fabrics, and fashion-

smart details... they add up to make a

more attractive you.

Ayres' Budget Dresses, Meridian Shops,
Second Floor

Reg. U. S. Pat.

A. Frances Dexter rayon crepe. Convertible collar, soft blousing, and rhinestone buttons. Rust, blue, plum, grey. Sizes 12½ to 24½. 17.95

B. Anne Mitchell rayon sheen gabardine with kick pleat, cuffed sleeves, button-trimmed flap pockets, and a combination patent leather and self-fabric belt. Nutshell, blue, grey. Sizes 14½ to 26½. 22.95

C. Marguerite shows a notched collar, pearl and gold buttons, and a gored skirt in tissue faille. Teal, black, beaver. Sizes 14½ to 26½. Also in regular sizes 38 to 46 in green, wine, blue. 17.95

D. Anne Mitchell lustrous tissue faille with softly pleated blouse and skirt, round neck, and buttoned-down front. Wine, grey, brown. Sizes 12½ to 26½. 22.95

