

## On the Air

**OZZIE AND HARRIET**—The Ozzie Nelson family, including their two children, David, 12, and Ricky, 9, will return to the air in one of radio's best family comedies... **WISH 8 p. m.**

**BIG TEN FOOTBALL**—Film of the highlights of last week's Big Ten games... **WFBM-TV 8 p. m.**

**FIGHTS**—Welterweight Beau Jack and Kid Gavilan will meet for a ten round bout. Bill Corum and Don Dunphy will give a blow-by-blow account of the match... **WISH 9 p. m.**

**SATURDAY**

**NORTHWESTERN - MICHIGAN**—Al Helfer and Bob Wolf will collaborate for a play-by-play description of the important Big Ten conference game... **WIBC 1:45 p. m.**

**TULANE-NOTRE DAME**—Gene Kelly will be at the South Bend stadium for WXLW; Harry Wiser and Jim Gibbons will do the play-by-play and color for WISH, and Bill Stern will have the announcing duties for WIRE. Broadcast time is 1:45 p. m.

**FOOTBALL ROUNDUP**—Red Barber will call in reporters covering the important games around the nation for a resume of the action... **WFBM 2 p. m.**

## No Ketchum Wampum On Roads, Indians Told

**MINNEAPOLIS, Oct. 14 (UP)**—The Great White Father told the Chippewa Indians today that they can't make motorists pay tolls for crossing the Grand Portage reservation.

Federal Judges Gunnar H. Nordbye and Dennis F. Donovan told the state of Minnesota it could condemn land on the reservation to run the North Shore highway across.

The Indians had threatened to erect toll gates where Chippewa braves would collect from passing motorists unless the state paid the tribe for using the land. Appraisers recommended paying the tribe \$723.35 for the land.

## Injured in Collision Of Car, Tractor-Trailer

Collision of an automobile and tractor-trailer early today at Madison Ave. and Raymond St. injured Elmer Jones, 63, of 1873 S. East St. He is in fair condition in Methodist Hospital.

Police said Mr. Jones' automobile, struck by a Huber & Huber Lines truck, knocked over an automatic traffic signal and was pinned by the truck against a traffic light stand. Ernest Jennings, 41, of New Albany, the truck driver, was uninjured. Mr. Jones was alone in the car.

## LEGAL NOTICES

**OIL AND GAS NOTICE**

Notice is hereby given by the Oil and Gas Commission of the Indiana Department of Conservation that at 10:30 o'clock a. m. in Central Standard Time, on October 14, 1949, in its office at 140 North Senate Avenue, Indianapolis, Indiana, it will hold a public hearing on the petition of Sun Oil Company, for an exception to the Rules and Regulations Affecting the Sale and Operation of Oil Wells in Indiana, the petition asking for an exception to Rule 19(b) and Rule 22(a) and authorizing the location of an oil well within the southeast quarter of Section 18, Township 3 South, Range 12 West, Passaic County, Indiana. Said petition was filed with the Commission on October 12, 1949, and is available for examination at the offices of the Department of Conservation, 140 N. Senate Avenue, Indianapolis, Indiana.

ELMER L. BROWN,  
SUPERVISOR,  
OIL & GAS DIVISION.

are glad it's FRIDAY

'cause tonight you can hear

## ADVENTURES OF OZZIE and HARRIET

at 8:00 P. M.

And you can have a great big, wonderful time listening to your other long-time favorites:

**6:30 THE LONE RANGER**  
P. M. Thrills and excitement are his partners!

**7:00 THE FAT MAN**  
P. M. Slueth with the detective who is hefty... but fast!

**7:30 THIS IS YOUR FBI**  
P. M. Official cases based on the F. B. I. files!

**8:30 THE SHERIFF**  
P. M. Follow the clues on the trail of murder!

**8:55 CHAMPION ROLL CALL**  
P. M. Round up of the sports news with Harry Wiser.

**9:00 FRIDAY NIGHT FIGHTS**  
P. M. Weekly bouts described from ringside.

stay all night with  
**WISH**  
1310 ON YOUR DIAL  
AMERICAN BROADCASTING COMPANY

## RADIO PROGRAMS

THIS EVENING  
(All Radio Programs on Central Standard Time)

| WFBM 1260 CBS            | WIBC 1070 Mutual    | WIRE 1430 NBO                    | WISN 1310 ABC        | WTLW 1590 P.M. After 5 P. M. | WLV-700 NBO                      |
|--------------------------|---------------------|----------------------------------|----------------------|------------------------------|----------------------------------|
| 4:30 Make Mine Music     | Easy Does It        | When a Girl Marries              | Hoosier Request Time | News—Ten With Dunes          | When a Girl Marries              |
| 4:45 Make Mine Music     | Easy Does It        | Partie Faces Life and Plain Girl | Neighbors            | Kelly's Kitchen              | Partie Faces Life and Plain Girl |
| 5:00 Make Mine Music     | Easy Does It        | Frank Page Farrell               | Yakow Chalmers       | News—Mill North              | Frank Page Farrell               |
| 5:15 Make Mine Music     | Easy Does It        | Moody Billboards                 | Jack Armstrong       | News—Mill North              | Moody Billboards                 |
| 5:30 Carl Massey Time    | Tom Mix             | Dinner Winner                    | Jack Armstrong       | Ray Block                    | Carl Massey Time                 |
| 5:45 Lowell Thomas       | Tom Mix             | News—Sports                      | Jack Armstrong       | Dave Ross                    | Lowell Thomas                    |
| 6:00 Gilbert Forbes      | Fellow Travels      | Supper Club                      | Lake Walton          | News—Buddy Cole              | Gilbert Forbes                   |
| 6:15 Jack Smith Show     | Jack Smith Show     | World News                       | Frank Edwards        | Eddie Le Mar                 | Jack Smith Show                  |
| 6:30 Club 15             | Gabriel Heatter     | Franky Martin                    | Loose Ranger         | News—Buddy Cole              | Club 15                          |
| 6:45 Edward E. Murrow    | Frank Looby         | Allen Jetties                    | Henry Morgan         | News—Buddy Cole              | Edward E. Murrow                 |
| 7:00 The Goldbergs       | Sammy Kaye          | Henry Morgan                     | The Fat Man          | News—Buddy Cole              | The Goldbergs                    |
| 7:15 My Favorite Husband | Jette van Jamboree  | Magic in Music                   | This Is Your FBI     | News—Buddy Cole              | My Favorite Husband              |
| 7:30 Jean Davis          | Platter Party       | Screen Directors                 | Ozzie and Harriet    | News—Buddy Cole              | Jean Davis                       |
| 7:45 B'at With Burrows   | Platter Party       | Jimmy Durante                    | The Sheriff          | News—Buddy Cole              | B'at With Burrows                |
| 8:00 Young Love          | News—The Saint      | Dr. I. O.                        | Fights               | News—Buddy Cole              | Young Love                       |
| 8:15 Rhythm Revue        | Mysterious Traveler | Bill Stern                       | Football With Winkle | News—Buddy Cole              | Rhythm Revue                     |
| 8:30 Gilbert Forbes      | News                | Allen Jetties                    | Silver Serenade      | News—Buddy Cole              | Gilbert Forbes                   |
| 8:45 Bandstand           | Night Serenade      | This Is the Story                | ABC Dance Band       | News—Buddy Cole              | Bandstand                        |
| 9:00 Harry James Show    | Dance Band—News     | Music You Remember               | ABC Dance Band       | News—Buddy Cole              | Harry James Show                 |
| 9:15 William S. Party    | Basin Street        | Final Home Edition               | Variety Hour         | News—Buddy Cole              | William S. Party                 |
| 9:30                     |                     | Dance Orchestra                  |                      | News—Buddy Cole              |                                  |
| 9:45                     |                     |                                  |                      | News—Buddy Cole              |                                  |

## SATURDAY PROGRAM

| WFBM 1260 CBS    | WIBC 1070 Mutual | WIRE 1430 NBO      | WISN 1310 ABC     | WTLW 1590 P.M. After 5 P. M. | WLV-700 NBO |
|------------------|------------------|--------------------|-------------------|------------------------------|-------------|
| 6:30 Early Birds | Cousin Charlie   | Dance Patrol       | Indiana Farmer    | Sign On—Sun Dial             | News        |
| 6:45 World News  | Gordon Graham    | World News Roundup | News—Dunkin' Time | News—Sun Dial                | World News  |
| 7:00 World News  | Gordon Graham    | Musical Clock      | Dunkin' Time      | News—Sun Dial                | World News  |
| 7:15 World News  | Gordon Graham    | Donald Bruce       | Dunkin' Time      | News—Sun Dial                | World News  |
| 7:30 World News  | Gordon Graham    | Musical Minutes    | Checkin' Time     | News—Sun Dial                | World News  |
| 7:45 World News  | Gordon Graham    | News to Veterans   | Checkin' Time     | News—Sun Dial                | World News  |
| 8:00 World News  | Gordon Graham    | Red Cross Show     | Checkin' Time     | News—Sun Dial                | World News  |
| 8:15 World News  | Gordon Graham    | Red Cross Show     | Checkin' Time     | News—Sun Dial                | World News  |
| 8:30 World News  | Gordon Graham    | Red Cross Show     | Checkin' Time     | News—Sun Dial                | World News  |
| 8:45 World News  | Gordon Graham    | Red Cross Show     | Checkin' Time     | News—Sun Dial                | World News  |
| 9:00 World News  | Gordon Graham    | Red Cross Show     | Checkin' Time     | News—Sun Dial                | World News  |
| 9:15 World News  | Gordon Graham    | Red Cross Show     | Checkin' Time     | News—Sun Dial                | World News  |
| 9:30 World News  | Gordon Graham    | Red Cross Show     | Checkin' Time     | News—Sun Dial                | World News  |
| 9:45 World News  | Gordon Graham    | Red Cross Show     | Checkin' Time     | News—Sun Dial                | World News  |
| 10:00 World News | Gordon Graham    | Red Cross Show     | Checkin' Time     | News—Sun Dial                | World News  |
| 10:15 World News | Gordon Graham    | Red Cross Show     | Checkin' Time     | News—Sun Dial                | World News  |
| 10:30 World News | Gordon Graham    | Red Cross Show     | Checkin' Time     | News—Sun Dial                | World News  |
| 10:45 World News | Gordon Graham    | Red Cross Show     | Checkin' Time     | News—Sun Dial                | World News  |
| 11:00 World News | Gordon Graham    | Red Cross Show     | Checkin' Time     | News—Sun Dial                | World News  |
| 11:15 World News | Gordon Graham    | Red Cross Show     | Checkin' Time     | News—Sun Dial                | World News  |
| 11:30 World News | Gordon Graham    | Red Cross Show     | Checkin' Time     | News—Sun Dial                | World News  |
| 11:45 World News | Gordon Graham    | Red Cross Show     | Checkin' Time     | News—Sun Dial                | World News  |

## WFBM-TV Program

(CENTRAL STANDARD TIME)

Friday, Oct. 14, 1949

**P. M.**

5:55—Program Preview

6:00—Katie, Fran and Olie

6:30—Tollnews

6:40—Amazing Dr. Polgar

6:50—Hoosier Playhouse

8:00—Big Ten Football

9:30—Boxing

9:40—Red Feather Magic

9:50—Coming Attractions

9:53—Sign Off

## Society to Admit Jap And German Surgeons

NEW ORLEANS, Oct. 14 (UP)

The International Society of Surgery has voted to begin admitting members from Germany and Japan once again.

Delegates to the 13th congress of the society, meeting here, said that German and Japanese surgeons have made important contributions to the profession. They had not been recognized by the society since the beginning of World War II.

The society also voted to hold its 14th congress in Paris in 1951.

## Showgirl to Give Up

LOS ANGELES, Oct. 14 (UP)

Showgirl Helen Keller promised to surrender on an extortion charge today after failing to keep one date with the sheriff's office.

The blond entertainer was indicted with actress Toni Hughes as a "come-on" girl for an extortion gang preying on wealthy Hollywood playboys.

## ANTIQUE EXPOSITION

Murat Shrine Temple  
Oct. 13-14-15-16  
Exhibitors From Coast to Coast.

Remember to make SOMEONE HAPPY on

## "SWEETEST DAY"

Saturday, October 15th

Special for This Week-End

CHOCOLATE  
HONEYCOMB CHIPS \$1.00  
per lb.

We Can Take Care of Your Parties With  
CANDIES and HALLOWEEN NOVELTIES

**BETSY ROSS**  
CANDIES

3 E. Market Street LI. 4801  
3840 N. Illinois Street HU. 5672

Have You Seen

**ZENITH**

TELEVISION

WITH THE NEW NO GLARE

**BLACK TUBE**

ZENITH

## Block's HOME BUDGET STORE

LOCATED AT PENNSYLVANIA AND WASHINGTON (southwest corner)

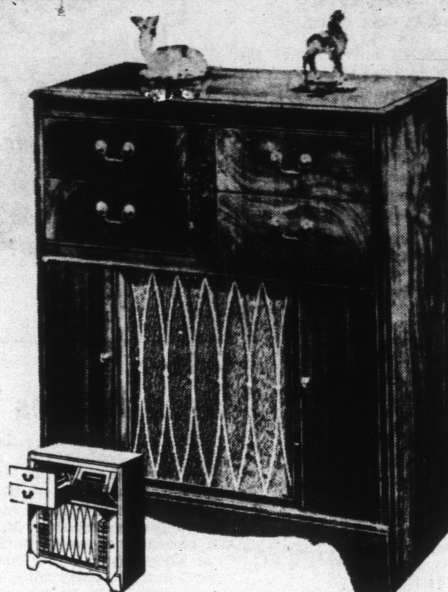
SAVE \$50

## Bendix FM-AM Radio Phonograph

Originally 219.95 **169.95**

Buy on BLOCK'S Convenient Terms

A beautiful, versatile instrument which brings in FM or AM broadcasts, has an automatic record changer for 10 or 12-inch records, and a plug-in attachment for LP microgroove record changer. 9 Tubes. Dual record storage space. And a handsome 18th Century cabinet of fine mahogany veneers. 34" High, 31 1/4" wide, 15 3/4" deep.



## NO DOWN PAYMENT

on Block's Dependable Appliances

Nationally Advertised Brands

Refrigerators • Clothes Dryers • Electric Dish Washers • Water Heaters • Home Freezers • Gas Ranges • Vacuum Cleaners  
Sewing Machines • Electric Washers • Electric Ranges • Electric Irons

NO DOWN PAYMENT—1.25 a Week

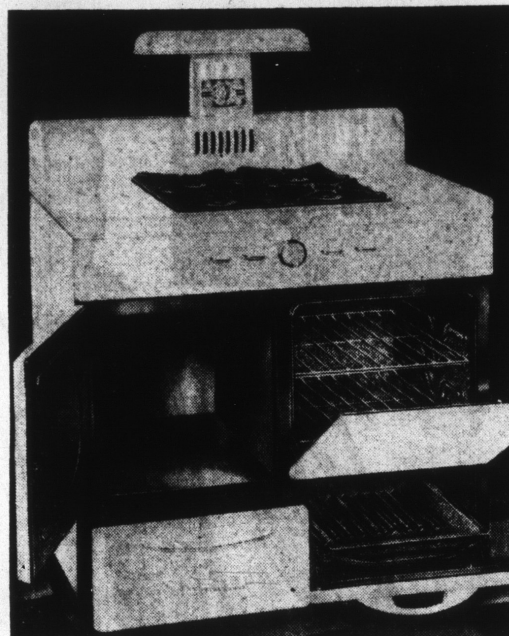
(Small Carrying Charge)

## NEW HARDWICK GAS RANGE

Only **89.95** Lamp and Timer, \$10 extra

CHECK THESE STAR FEATURES FOR VALUE:

- ★ 36" Wide
- ★ Gleaming Porcelain Finish
- ★ One-Piece Monitor Top
- ★ 2 Regular and 2 Giant Burners, automatically lighted and grouped in the center
- ★ Large Storage Space
- ★ Latest Type Improved Oven Heat Control
- ★ Roll-Out Smokeless Broiler
- ★ Fully Insulated One-Piece Oven. A wonderful baker. Easy to clean.
- ★ Tested and Approved by American Gas Association



NO DOWN PAYMENT—2.48 WEEK

(Small Carrying Charge)

More Space for Your Money—Big, Roomy 8.6 Cubic Foot

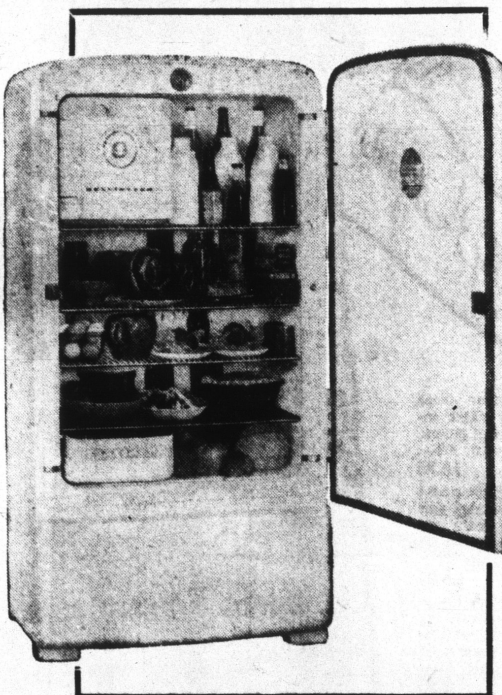
## KELVINATOR

That Takes No More Room Than 7-Ft. Size

NOW ONLY **229.95** Model RS

Big 25-lb. frozen food chest, extra tall space for loads of bottles, big aluminum chilling tray, almost 16 sq. ft. of shelf area, big sliding vegetable crisper, and Kelvinator's famous Polarsphere, the sealed-in-steel unit that is permanently lubricated. Included is Kelvinator's 5-year-protection plan.

See All 10 Great Models Priced from 179.95 to 449.95  
Liberal Trade-In Allowance



NO DOWN PAYMENT—1.30 A WEEK

## APEX WASHER

With Self-Emptying Electric Pump  
With Matching Twin Tubs

ALL FOR **119.95** (New Model 836)

(Small Carrying Charge)

That's our way of introducing the new 1950 Apex Washers. This one features the famous spiral dasher, in a big 20-gallon all-porcelain tub, with automatic drain, and a big Lovell wringer with newest safety features. Pressure indicator for all fabrics. Twin 20-gallon laundry tubs are white enameled outside, fit perfectly up under wringer, have easy rolling casters, threaded hose connections and drain valves, on each tub.

