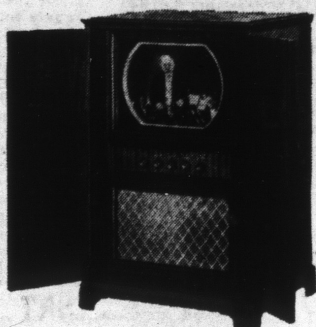




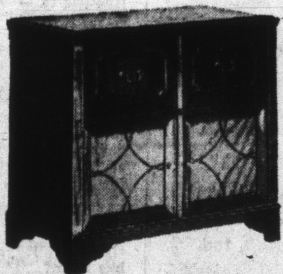
FIRST PRIZE

BIG 1949 DELUXE 4-DOOR CHEVROLET STYLELINE SEDAN



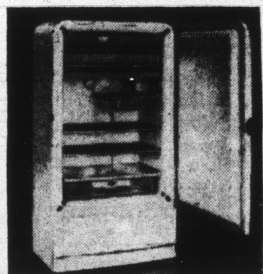
2nd PRIZE

MAGNIFICENT DELCO TELEVISION CONSOLE (16-INCH SCREEN)



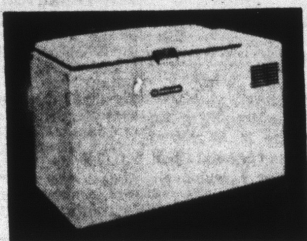
3rd PRIZE

BEAUTIFUL DELCO RADIO-PHONOGRAPH COMBINATION CONSOLE



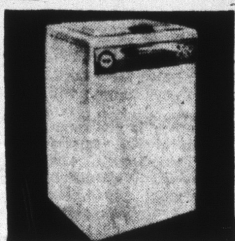
4th PRIZE

ROOMY 8-FOOT FRIGIDAIRE REFRIGERATOR



5th PRIZE

LARGE FRIGIDAIRE HOME FREEZER



6th PRIZE

FINEST FRIGIDAIRE AUTOMATIC WASHER

WITH 44 OTHER WONDERFUL PRIZES, ALL TOTALING OVER

\$5,000.00

7th PRIZE

DELCO RADIO CONSOLE COMBINATION

8th PRIZE

DELCO RADIO TABLE MODEL COMBINATION

9th PRIZE

DELCO PORTABLE RADIO (SAME FOR 10th, 11th and 12th PRIZES)

13th PRIZE

LARGE DELCO TABLE MODEL RADIO (SAME FOR 14th, 15th, 16th, 17th, 18th, 19th and 20th PRIZES)

21st PRIZE

SMALL DELCO TABLE MODEL RADIO (SAME FOR 22nd, 23rd, 24th, 25th, 26th, 27th, 28th, 29th, 30th, 31st, 32nd, 33rd, 34th, 35th, 36th, 37th, 38th, 39th, 40th, 41st, 42nd, 43rd, 44th, 45th, 46th, 47th, 48th, 49th and 50th PRIZES)

You Can Win 50 Wonderful Prizes!

ONE OF ALL THESE

WONDERFUL, WONDERFUL.

Easiest Contests Ever Held!

IN ONE OF THE

IN MARION COUNTY

(NO BOXTOPS TO SEND IN, NO LABELS, NOTHING TO BUY OR GIVE, NO OBLIGATION, NO STRINGS ATTACHED)

HERE'S ALL YOU DO:

Just complete this statement ("I give to the Community Fund because _____") in 25 additional words or less. Sign your name and address. Mail to Community Fund Contest, P. O. Box No. 1681, Indianapolis, before October 25. That's all! Nothing else!

This contest is being sponsored and all its expenses (including advertising and more than \$5,000.00 in prizes) are being paid by your General Motors Dealers—for just one reason:

We deeply believe that there is absolutely no civic enterprise so vital to our city's and county's welfare as our Community Fund! All of us must understand its importance! And so we want this contest to give thousands of Marion County citizens a broader, fuller understanding of the Community Fund than they have ever had before!

We want this contest to help new thousands to see for themselves exactly what the Community Fund is REALLY ALL ABOUT! We want to help prove to your own satisfaction that it is by far the fairest, most efficient, most

economical way to raise money for all 46 Red Feather agencies, which provide the health, welfare and character-building services used by 1 in every 4 persons in Marion County last year. These services prevent and mend broken lives, bodies, minds, spirits, standards and values . . . things which would damage our community . . . at far, far greater cost than all Community Fund gifts combined.

We want this contest to make you more aware of how your Community Fund has helped to put an end to "all these endless drives for funds" by coming to you just once a year for support of all 46 Red Feather agencies (to spare you the nuisance of 46 separate fund drives!) . . . how this single 46-in-1 campaign means that more of your gift goes into direct services (less for fund-raising and administrative cost) . . . how it prevents wasteful duplication of services . . . how 11,000 of your friends and neighbors give their time and energy to solicit your gifts without a single cent of pay . . . and how all Community Fund gifts are ONLY FOR MARION COUNTY agencies!

This is one contest that's really easy! Lots of luck! We hope you win a prize!

TO MAKE IT STILL EASIER FOR YOU . . . HERE'S A DESCRIPTIVE LIST OF THE 46 AGENCIES SUPPORTED BY YOUR COMMUNITY FUND

ALPHA HOME—Provides room, board, laundry, medical care for aged colored persons.

BOYS' CLUB—Offers a recreational and educational program for boys of all ages.

BOY SCOUTS—Teaches self-reliance, courage, citizenship and camping to boys 7 to 17.

CAMP FIRE GIRLS—Gives training in homemaking, handicraft, health, nature, business, citizenship and camping to girls 7 to 17.

CATHOLIC CHARITIES (Central Bureau, St. Elizabeth's Home, Women's Association)—Provides child and family welfare services; adoptions; boarding, foster and maternity homes; homes for infants under 3 and problem girls; medical care.

CHILDREN'S BUREAU—Supervises child-placements, homes for children who are public wards; counsels unwed mothers and families which adopt orphans.

CHRISTAMORE HOUSE—Offers health, athletics, music, recreation for children and adults.

CHURCH FEDERATION (Social Service Dept.)—Is a link between churches, courts and social agencies; channels cases to proper agencies; provides religious counsel.

COMMUNAL CENTER—Provides group work, recreation and education for boys, girls and adults.

COUNCIL OF SOCIAL AGENCIES—Is composed of 99 county-wide health, welfare agencies co-ordinating activities, preventing duplication.

DAY NURSERY—Affords day care of children 1 to 12.

FAMILY SERVICE ASSOCIATION—Assists with marital, budget, child guidance and child-parent problems; aids homeless children.

FLANNERY HOUSE—Provides social, spiritual, moral, physical, vocational, health, and family counseling and day-nursery services for colored persons.

FLOWER MISSION—Reduces spread of tuberculosis by distributing milk to needy children and adults.

GENERAL PROTESTANT ORPHAN HOME—For children 4 to 16, orphans and from broken homes.

GIRL SCOUTS—Offers a program of character-building, home-making, arts, crafts, dramatics, literature, health, safety, camping for girls 7 to 18.

GOODWILL INDUSTRIES—Conducts a salvage program for economic rehabilitation of handicapped persons.

HAWTHORNE SOCIAL SERVICE ASSOCIATION—Provides recreation, informal education, music, crafts, sports for adults and youths.

INDIANAPOLIS HEARING SOCIETY—Offers lip-reading and job-finding help for hard-of-hearing.

JEWISH FEDERATION (Central Office, Social Service, Bernstein Home for Aged, Kirshbaum Center, Big Eagle Camp)—Coordinates all Jewish social, educational, recreational and welfare services, including foster and boarding homes, adoptions and placements, care of aged.

LEGAL AID SOCIETY—Offers legal assistance for those unable to pay for it.

LUTHERAN CHILD WELFARE—Supervises foster homes and institutional care for children.

MAYER NEIGHBORHOOD HOUSE—Provides sports, crafts, hobbies, other character-building activities.

SALVATION ARMY (Fresh Air Camp, Family Service and Relief, Youth and Group Program)—Gives recreation and guidance to girls and boys; assistance, spiritual guidance, shelter for homeless men.

SOCIAL HYGIENE ASSOCIATION—Sponsors classes, lectures, films to stabilize family life and prevent venereal disease.

SOCIAL SERVICE EXCHANGE—Is an informational clearing house for all health and welfare agencies, preventing duplication.

SOUTHWEST SOCIAL CENTER—Offers informal community educational, recreational programs.

SUEMMA COLEMAN HOME—Offers adoption placements, maternity home for unmarried mothers.

THEODORA HOME—Gives emergency shelter for needy women and children.

TRAVELERS AID—Offers daily help to travelers in trouble at train and bus stations.

VISITING NURSE ASSOCIATION—Provides skilled home care by registered nurses (heart, cancer, post-polio, tuberculosis, etc.); industrial nursing and orthopedic care.

VOLUNTEERS OF AMERICA—Offers shelter, relief and aid to transients, families and homeless persons.

VOLUNTEER OFFICE—Finds and places volunteer workers for civic enterprises.

WHEELER CITY MISSION—Provides care, food, clothing and spiritual services for transient men.

Y.M.C.A. (Central and Senate Avenue)—Operates a full-time program in Christian fellowship, adult education, athletics and recreation for men and boys. Room and board at nominal fees.

Y.W.C.A. (Central and Phyllis Wheatley)—Operates a full-time program in Christian fellowship, adult education, athletics and recreation for women and girls. Room and board at nominal fees.

123,597 MARION COUNTY CITIZENS USED THESE COMMUNITY FUND SERVICES LAST YEAR!

RULES

- This contest is open only to residents of Marion County, Indiana, except paid employees of General Motors dealers, the Community Fund and its agencies—and members of their families.
- Complete this statement in 25 additional words or less: "I GIVE TO THE COMMUNITY FUND BECAUSE _____"
- You may use the entry blank below, or you may write your entry on a separate sheet of paper. Enter as many times as you wish, but each entry must be on a separate sheet of paper.
- Sign your name and address on each entry, and mail to Community Fund Contest, P. O. Box No. 1681, Indianapolis, Ind.
- Entries must be postmarked not later than midnight, October 24, 1949, and must be received not later than November 1, 1949.
- Entries will be judged on the basis of originality, aptness and sincerity—by the Reuben H. Donnelley Corporation. Judges' decisions will be final. In case of ties, duplicate prizes will be awarded. All entries, contents and ideas then become the property of the Indianapolis and Marion County Community Fund.

MARION COUNTY GENERAL MOTORS DEALERS CONTEST FREE ENTRY BLANK—MAIL IT NOW!

to Community Fund Contest, P. O. Box No. 1681, Indianapolis, Ind.

"I give to the Community Fund because _____"

(Complete the above statement in 25 additional words or less)

Name _____

Address _____

All Costs of this Contest (including prizes and advertising) are paid for by you . . .

GENERAL MOTORS DEALERS OF MARION COUNTY

... in the interest of a broader, fuller understanding of The Community Fund