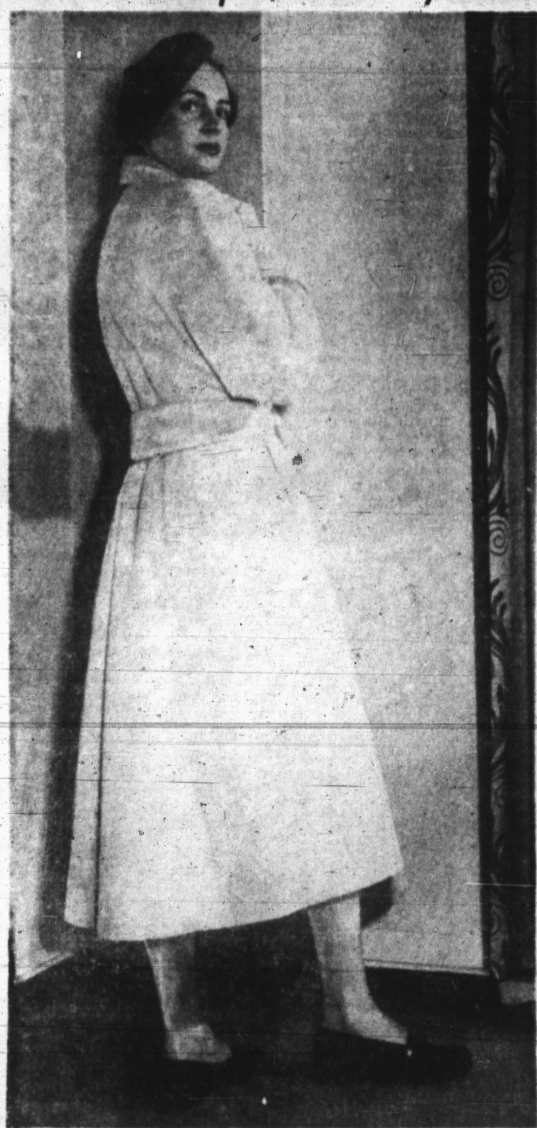


# There's A Spot In Every Wardrobe For An Untrimmed Cloth Coat



Creamy fleece



Gold and brown tweed



Gray smooth-finish wool

By LOUISE FLETCHER  
Times Woman's Editor

THERE'S a spot in every wardrobe for an untrimmed cloth coat. Usually it is of the sportswear persuasion, although many coats designed for town-wear are untrimmed. This year, as rich and colorful fabrics claim the limelight, there is even less emphasis on trimming, anyway.

Two of the untrimmed coats pictured are of the sports or country-wear type while the short one would find itself at home over town-wear suits and frocks. All three are from Block's second-floor coat and suit department.

THE SOFT, fleecy fabric of the coat at extreme left is in pale cream color. It has one of the season's favored style details—a back-dipping contour belt to reef in the coat's back fullness. Armholes of the cuffed sleeves are deep and roomy. The belt ties in front and the coat has inset pockets and wide, wide revers. It is \$69.95.

The short coat below (\$49.95) is of smooth gray woolen. It has a slim, almost tubular, look from the front, but the back flares gently. Rolling collar, high-placed brass ball buttons and sleeves tapering toward the wrists are all new fashion notes.

The gold and brown tweed by Sportleigh (right) has a full quota of Fall 1949 fashion news. The double-breasted button closing is well up on the coat front. Pockets—big ones—also are a bit above last year's level. And the loose-swinging back has a button-anchored half-belt. The price tag says only \$40.

## Eat Well for Less—Oyster Crop For 1949 Is A Big One

Abundant Supply Is in Prospect

By GAYNOR MADDOX

NEA Staff Writer

The 1949 oyster season is open. Dr. Lewis Radcliffe, director, Oyster Institute of North America, says that the new oyster crop will be one of the best on record. There's news to get in a "stew" about.

Luncheon: Clam chowder, sardine sandwiches, rennet custard, tea, milk.  
Dinner: Fried oysters, creamed Swiss chard, sauteed yellow squash, cabbage and beet slaw, bread, butter or fortified margarine, stewed pears, coffee, milk.  
Luncheon: Potato salad, sliced liverwurst, hot corn muffins, gelatin dessert, tea, milk.  
Dinner: Chicken soup, fresh corn pudding, bacon, grilled tomato slices, bread, butter or fortified margarine, brownies, coffee, milk.

### TUESDAY'S MENUS

BREAKFAST: Grapes, oatmeal, raisen toast, butter or fortified margarine, coffee, milk.  
LUNCHEON: Oyster stew, pilot biscuit, coleslaw, stewed pears, peanut cookies, tea, milk.  
DINNER: Meat stuffed cabbage, parsley boiled potatoes, broiled tomatoe halves, rye bread, butter or fortified margarine, fresh prune deep dish pie, cream, coffee, milk.

### Sorority to Meet

The Nu Chapter, Phi Delta Psi Sorority, will meet Wednesday in the home of the president, Mrs. Matthew Mann, Brownsburg.

## The Times Pattern Service



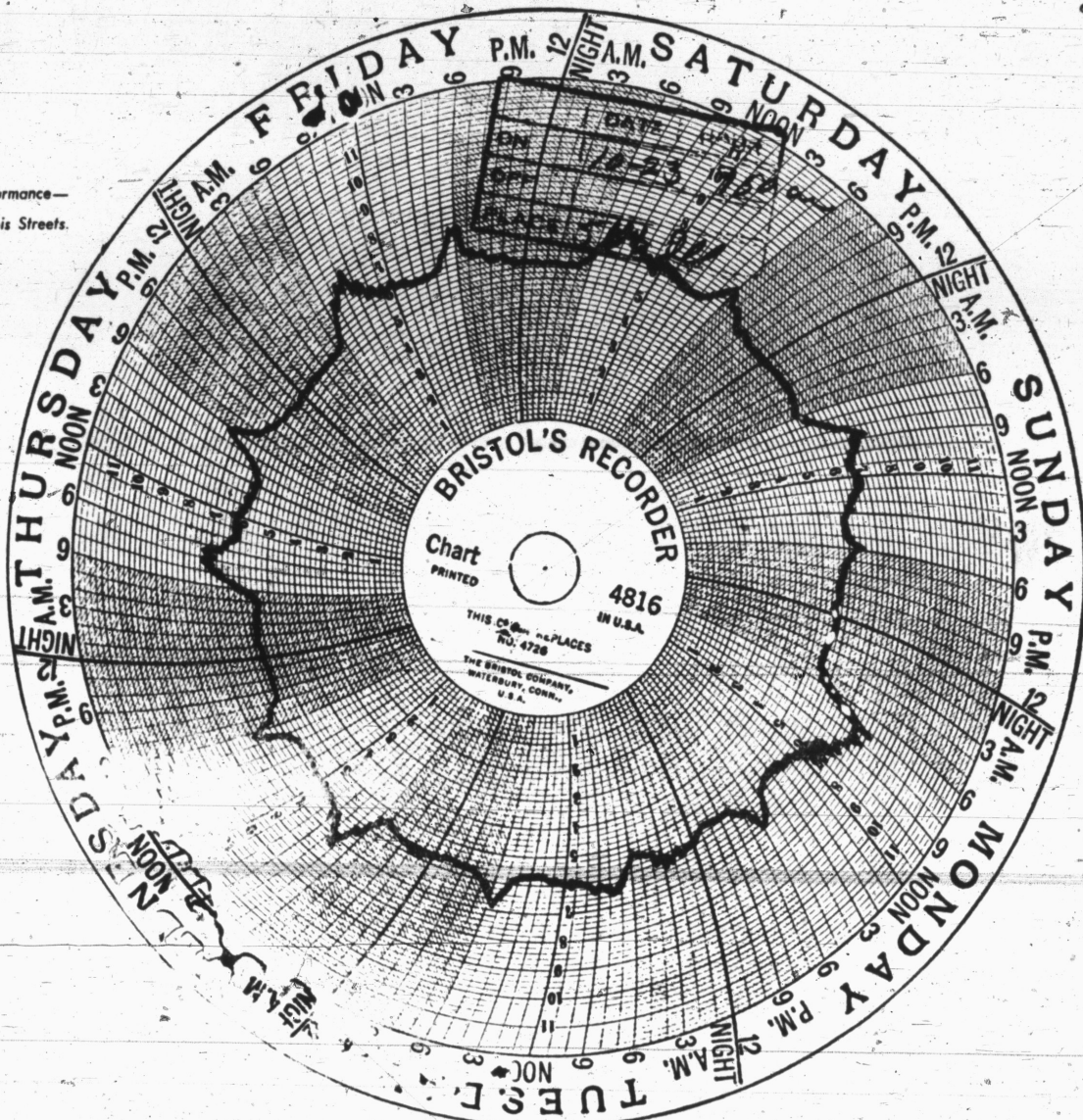
Pattern 8709 comes in sizes 12, 14, 16, 18, 20, 40 and 42. Size 14, 3 3/4 yards of 3 3/4-inch.

SUE BURNETT  
The Indianapolis Times  
214 W. Maryland St.  
Indianapolis 9, Ind.  
No. 8709 Price 25c  
Size .....  
Fashion Book Price 25c  
Name .....  
Street .....  
City .....  
State .....

Pattern 5383 includes seven hot-iron transfers of the five-inch Kitten tea towels design and stitch illustrations, complete instructions and color chart.

ANNE CABOT  
The Indianapolis Times  
530 S. Wells St.  
Chicago 7, Ill.  
No. 5383 Price 20c  
Name .....  
Street .....  
City .....  
State .....

★ This pressure chart—showing a week's performance—was taken from the gauge at 55th and Illinois Streets.



## WE KNOW WHAT TIME YOU HAD YOUR BREAKFAST

★ Generally speaking, that is. We weren't looking for the information, you understand, it just happened. There it was, plain as day, on the pressure charts.

We can tell: you wash mostly on Monday forenoon; cook a lighter meal on Monday night than you do Tuesdays and Wednesdays; hardly cook at all on Sunday evening; you eat breakfast between 7 and 8 A.M. on week-days, but a good hour later than that on Sunday morning.

Yes, pressure charts are interesting, for other reasons too. You see, as part of the program of giving you the best in gas service, pressure must be regulated in each

neighborhood according to how gas is used. When many gas users turn on their gas at the same time (and they certainly do) pressure would drop in the mains unless it is increased instantly—in proportion to the amount of gas used at the moment. Booster regulators do this job. Scattered over the city, these regulators keep an eye on your gas pressure—keeping it constant—even if everybody wants ham and eggs at the same time. Automatic pressure gauges record each regulator's action on a chart during every hour of every day. Hence all this inside information on your gas using habits.

Serving Indianapolis with gas (almost 400 square miles of territory, with 120,000 customers in it) is a big, technical job. A job that calls for employees with engineering skill, knowledge and know-how. Gas Utility employees have a full opportunity to acquire this skill and know-how because they can make a career of their jobs: the changing tides of politics do not touch them.

**CITIZENS GAS**  
AND COKE UTILITY

Operated by the Board of Directors for Utilities as a Public Charitable Trust

**School Days**

suggests boys and girls "with bright and shining faces" and SHOULD suggest clean clothes for them.

Goodness! Lively! Gregarious!

—and, remember, ADULTS' fall clothes need immediate attention—including the Mister's HAT.

**Gregg**  
CLEANERS

Our black and gold trucks cover the city DAILY.

TELEPHONE RI-8321