

Blackwood on Bridge— Trick Saved By Finesse Of Champion

Plays Correctly
Against King, Jack

By EASLEY BLACKWOOD
IN MY LAST column I showed you a double finesse against the adversely held king and queen of a suit. Today Mr. Champion made a double finesse against the adverse king and jack of the trump suit.

Mr. Dale was on lead against the four-spade contract and he Both sides vulnerable.

East dealer.
NORTH (Mr. Masters)
S-9 8 3
H-A K 8 7 5
D-5 4
C-Q 5

WEST (Mr. Dale) EAST (Mrs. Keen)
S-K 5 4 S-J 2
H-J 9 4 2 H-Q 10
D-A K 9 3 D-Q 8 7 6
C-S 2 C-10 9 6 5 4

SOUTH (Mr. Champion)
S-A Q 10 7 6
H-6 3
D-10 2
C-A K J 7

The bidding:
E S N
Pass 1 S Pass 2 H
Pass 2 S Pass 3 S
Pass 4 S All Pass

won the first two tricks with the king and ace of diamonds. A third diamond lead was trumped by Mr. Champion with the six of spades.

He crossed to the queen of clubs and led dummy's trey of spades. When Mrs. Keen played low, Mr. Champion made the proper play of the ten of spades. Mr. Dale won with the king but that was all for the defenders.

Mr. Champion Leads

Of course on this particular hand Mr. Champion would have got exactly the same result by finessing the queen of spades on the first lead of the suit as the jack would have fallen automatically under the ace on the second round.

But Mr. Champion was just doing what good bridge players always do. He was giving himself every chance. If Mrs. Keen had held both the king and the jack of spades and one small one, Mr. Champion would have lost no tricks at all in the suit.

In that case his 10 would have held the first trick. He would then have entered dummy with the ace of hearts and led another spade covering whatever card Mrs. Keen played.

If, on the first round of spades, the 10 had lost to the jack in Mr. Dale's hand, Mr. Champion planned to enter dummy with a high heart and finesse against the king on the second lead of spades. The chances are three to one that Mr. Dale will not hold both the king and the jack. Even if he should hold both honors, the double finesse procedure would lose a trick only when he holds the king-jack alone.

Send questions on bridge to Mr. Blackwood, The Indianapolis Times, Indianapolis 6.

Your Yard— Flowers Tell Their Needs

Gardener Can Detect
Plant Food Shortage

Ever hear the plants in your yard talk?

Your peonies, for example. If they're growing skyscraper fashion, they're saying they need more phosphate. A handful of chemical fertilizer watered in around each plant will help balance that oversupply of nitrogen and they'll produce larger flowers on less floppy stems. Then next fall dig in a generous supply of bone meal around each one and see what they say next spring.

Maybe your tulips are coming up three and four in a cluster, sort of spindly. They're saying it's hard scrambling when four bulbs try to divvy up the plant food that's all they can find in one spot. Let them grow on where they are this spring but give them some chemical fertilizer as soon as they've finished blooming.

Water in about a handful to each three square feet of bulb planting. After the leaves have turned completely yellow take them up and reset the bulbs in a bed liberally fertilized with bone meal. Sometimes changing "run-out" tulips from one kind of soil to another improves bloom—if your yard's big enough to sport two kinds of soil. I have known gardeners to swap bulbs with good results.

Your evergreens growing pale green and rather spindly? That pale green says they need more nitrogen. Try an application of high nitrogen lawn fertilizer and a mulch of rotted manure or leaves for the summer months. Pruning tip ends of branches will help keep them compact, too. You can do that any time now.

If you listen carefully you can hear the plants talking all the time.

TUESDAY'S MENUS

BREAKFAST: Canned grapefruit juice, crisp bacon, griddle cakes, honey butter, coffee, milk.

LUNCHEON: Tomato-tomato sauce, baked potatoes, English muffins or toast rounds, apple and cabbage salad, fresh fruit bowl, cookies, tea, milk.

DINNER: Meat loaf with tomato sauce, baked potatoes, buttered mustard or dandelion greens, enriched bread, honey butter, pascal celery and radishes, angel cake with crushed fresh strawberries, coffee, milk.

Hints on Tailored Dresses



By SUE BURNETT

Dear Sue Burnett, writes, Mrs. Gregory Turner of Indiana. "I like neat, well tailored dresses for summer, and would be grateful if you'd show one or two shirtwaisters. I know I'll just about live in them."

The two styles illustrated, Mrs. T., are so nice for warm weather with comfortable sleeves, crisp details and a becoming air.

Pattern 8400 is for sizes 14, 16, 18, 20; 40, 42 and 44. Size 16, 4 yards of 39-inch.

Pattern 8285 comes in sizes 11, 12, 13, 14, 16 and 18. Size 12, 4 yards of 39-inch.

Send for a copy of the spring and summer issue of Fashion, our complete pattern magazine. It's smart, fresh, informative—and bigger and better than ever!

Gift pattern printed in the book.

SUE BURNETT

The Indianapolis Times

214 W. Maryland St.

Indianapolis 9, Ind.

No. 8400 Price 25c

No. 8285 Price 25c

Size.....

Fashion Book Price 25c

Name

Street

City

State

.....

.....

.....

.....

.....

.....

.....

.....

.....

.....

.....

.....

.....

.....

.....

.....

.....

.....

.....

.....

.....

.....

.....

.....

.....

.....

.....

.....

.....

.....

.....

.....

.....

.....

.....

.....

.....

.....

.....

.....

.....

.....

High Grade Butter, Honey Stocks Ample

Price Not Sure
Guide to Quality
By GAYNOR MADDOX

TOP GRADE butter is in plentiful supply now. You should have no trouble in getting it, if you buy U. S. graded butter and know what the grades mean.

Price is not a sure guide to quality—a fact too many of us do not realize. Honey is plentiful as well as good butter. For a good spread for griddle cakes and after school snacks, try blending them.

HONEY BUTTER
Cream one-fourth cup butter. Add one-fourth to one half cup honey gradually, creaming mixture well after each addition of honey.

Family Hour

School 56 parents, patrons and children were special guests for the Children's Museum Family Hour yesterday from 2 to 5 p. m. (DST).

New Hair 'Makeup' Heightens Natural Color

IF YOU can put cosmetics on your face, to heighten natural color, why can't you use "makeup" for the hair? The answer is, "You can."

At Ayres' this week in the Beauty Salon, Mrs. Helen LaRue of Raymond Laboratories will be on hand to tell about Penetreme Color Creme, a cosmetic for the hair. Mrs. LaRue is a permanent wave technician who will be available for customer consultation.

The Penetreme product, while it is not a dye, is more than a shampoo tint. It is longer lasting than a tint or color rinse, surviving three to four shampoos.

When it is used by the beauty salon operator, no patch test is necessary as with dyes because only certified safe non-toxic coloring is used in the product. A range of 13 colors is available in Penetreme.

ANOTHER visitor at Ayres' this week will be, on hand to



Hair brightened by color creme

product. A range of 13 colors is available in Penetreme.

ANOTHER visitor at Ayres' this week will be, on hand to

'Lineny Look' Is Smartest Accent

The "lineny look," which is the smartest accent in this summer's fabric picture, will have its echo next winter when glossy, homespun weaves and corded textures will continue in popularity with top designers, according to textile expert Ann Kissel.

Miss Kissel, whose foresight in such matters guides the decisions of the gigantic Penetreme and Brighton Mills, looks ahead to an

autumn of casual but trimly tailored clothes, still round in feeling but never bulky.

"Such clothes take real planning by the fabric makers, and this year the designers will have luscious weaves and colors to work with."

Color will be a strong theme in fashion, Miss Kissel said. Deeper, richer, more "sort of regal," she hinted.

Two Future Brides To Be Feted

Susannah Milner
Will Give Tea

Miss Susannah Milner will honor Miss Susan Gatch and Miss Nancy Louise McCown with a tea at 4:30 p. m. Wednesday in the home of her parents, Dr. and Mrs. Jean S. Milner, 5145 N. Meridian St.

Miss Gatch will be married June 4 to Robert S. Ashby and Charles William Symmes will take Miss McCown as his bride on May 11.

Mrs. William M. Loudon will give a luncheon Saturday in the Columbia Club for Miss Gatch. Following the luncheon the guests will attend the matinee performance of "Brigadoon" in the Murat Theater.

Mrs. Harold Green To Be Honored at Tea

Mrs. Harold Ruschaupt, 3322 College Ave., will entertain with a tea Saturday afternoon for Mrs. Harold Green.

Dr. and Mrs. Green and daughter, Linda, are moving to Tampa, Fla. to live.

Open House Held

Many Indianapolis persons were among the more than 250 guests who helped celebrate the golden wedding anniversary of Mr. and Mrs. Guy Abercrombie of Rushville yesterday. A buffet supper followed the open house.

Meeting Planned

The St. Francis Hospital Guild will have an all-day meeting tomorrow in the hospital.

Wasson's G-E Appliance Center, Monument Store

Telephone RIley 7411—Ext. 218

Save! NEW LOW PRICES ON 1949

8 cu. ft. REFRIGERATORS

Regular \$259 Value!

Lowest priced eight cubic foot model of the new 1949 General Electric Space Maker Refrigerators. All-steel construction... baked white enamel finish... large stainless steel freezer... deep, porcelain, high humidity drawer for fruits and vegetables... and they require no more floor space than was formerly occupied by 6 cu. ft. refrigerators.

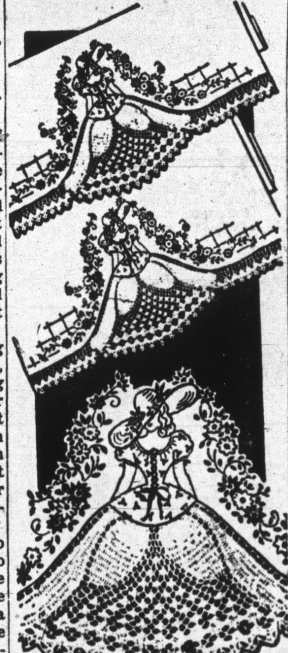
ONLY \$25 DOWN

10.30 A MONTH FOR 24 MONTHS

Including carrying charge

Wasson's General Electric Appliance Center, Monument Store

Bygone Day



By MRS. ANNE CABOT

Unusual and beautiful pillowcase or dresser scarf decorations are reminiscent of the lavish costumes of by-gone days. This lace skirted and embroidered figure makes for fascinating needlework—a both crochet hook and embroidery needle are used to create the enchanting designs.

Pattern 5495 includes hot-iron transfer for two embroidery designs, stitch illustrations and color chart; crocheting instructions for skirt, crochet stitch illustrations and material requirements.

To order, use coupon.

ANNE CABOT
The Indianapolis Times
530 S. Wells St.
Chicago 7, Ill.

No. 5495 Price 20c

Name

Street

City

State

.....

.....

.....

.....

.....

Teen Problems— Activity Implies Leadership

By JEAN

WHAT QUALITIES make for leadership? Take a look at the captain of your ball team or the editor of your school paper. Compare Mr. Big, the business tycoon and the President of the United States. Isn't it true that all of them were first of all good followers?

Captain Joe was a star player before he was chosen top guy. Editor Eddie was a go-getting leg-man. Mr. Big was a valuable employee, and the President proved his loyalty and ability in the party ranks.

Psychologists say that leaders aren't born; they're made. With practice, practically anyone can acquire some of the habits of leadership.

SO-O CHUM, what qualities should you try to develop? Experience in teamwork through

DISHING the DIRT

By MARGUERITE SMITH

Q—What about using rabbit manure on flowers? I can get some and wonder if I would dare use it fresh now or whether it must be composted first. Mrs. John Kentnick, 1518 Maxine Drive.

A—It will be much safer to layer the fresh manure with garden rubble or soil for at least three months before you use it on flower beds. The alternating layers of soil will absorb nitrogen that might otherwise escape as the manure heats. But if there is a good deal of straw or other litter mixed with it, you may get away with using it very, very lightly right now around your perennials.

We once tried (just to see what would happen) very straw chicken manure on a perennial border while it was fresh. It did no harm. Danger comes from excess of nitrogen too suddenly released and rabbit manure is specially high in nitrogen.

Send questions on gardening to Mrs. Smith, The Indianapolis Times, Indianapolis 6.

YWCA to Hear Reports On National Convention

Members of all YWCA branches will meet at 4 p. m. tomorrow in the Central YWCA to hear reports on the organizations convention held in March in San Francisco. Dinner will be served at 6 p. m.

Indianapolis delegates at the convention were Mesdames Boyd I. Miller, Felix Vonnegut, C. D. Vawter, Roy Thompson and Paul A. Batties and Miss Margaret Barto and Miss Janette Waring.

Dance Arranged

The Be-Do Teen Canteen will have a "Corn Belt Hop" Thursday night in the South Side Community Center. Bill Dunn and his band will play.