

Estimates Churubusco Turtle at 40 Pounds

Local Attorney Believes Elusive Creature Is Snapping Variety

By EMMISLEY W. JOHNSON, Guest Turtle Editor
The failure of divers to bring to light the turtle at Churubusco has caused many readers to dig into their natural histories and encyclopedias with a view of determining just how this turtle looks.

Two things at once excite the curiosity of the reader and may be settled with some degree of accuracy even before the reptile is brought from the waters. How much does the turtle weigh? How could it stay under the water so long?

From the description given of the reptile by farmer Gale Harris, we understand the turtle has a bowed back, that some of the plates are covered with moss and that the bony shell does not entirely cover the head, tail and feet, which are unusually large. From this we determine that the turtle is the regular, old-fashioned snapping turtle, called in southern states the "alligator turtle."

This turtle thrives best in the South and can attain an unusual size, sometimes weighing as much as 100 pounds. Upon one or two occasions, the turtle has reached

Emmisley W. Johnson is a prominent Indianapolis attorney and senior partner in the firm of Johnson, Zechel & Johnson, President of the Indiana Astronomical Society, he also is an ardent student of natural history. His interest aroused by the series of stories on the Boat of Churubusco, Mr. Johnson searched his library for facts on turtles, their way of life. The material in his article was garnered from at least a dozen books of his personal library.

The weight of 125 pounds. North of the Ohio River the snapping turtle is much smaller, but it is the largest and ugliest of turtles north of the West Indies.

THE BROAD SHELL, consisting of many polygonal disks, raises in a series of black humps. Many of the disks are covered with moss or a certain kind of algae. The upper shell is sometimes as much as 20 inches in breadth and has been known to be three feet long. The head is large and it has strong jaws. The tail is relatively long, thick and meaty.

Its flesh is palatable and by some considered a delicacy. This turtle rarely leaves the water and can stay submerged without breathing for a long period of time. It feeds upon fish, frogs, and aquatic animals.

It is cross-tempered and puts up a good fight. It has an evil eye and a long, sharp, hooked beak. It fights much of the time and never gives quarters. It is carnivorous in its habits.

MUCH of the skeleton of this reptile is on the outside of its body, and only a rudimentary skeleton underneath which extends out into the four feet and the vertebrae of the neck. The top shell is very hard, while the underneath plate is somewhat softer.

The snapping turtle has no teeth, but the edges of its jaws are hard as horn and are much like a chisel. The turtle buries its egg in soft ground or sand and lets the sun hatch them. It grows to be very old and in the South, where it is not necessary for it to hibernate, it grows to great size. Whenever this turtle spends three or four months of the year in deep, cold water it does not eat, breathes but little. This interferes with its growth.

It has two worm-like threads projecting from the tip of its tongue which it extends to entice fish. The fish, attracted by these moving, unusual threads, are grabbed by the snapper. The algae, or moss, growing on its back, helps to conceal the object and is beneficial to it while fishing.

The turtle at Churubusco, if it is true to its type, has a central row of plates running down the center of its back which are fused into the vertebrae. A row of plates runs down the center of the back and are much humped up. On each side of this center line are eight plates, and around the outer edge are 23 smaller plates.

The under-shell has five paired plates, with an extra for good measure.

THE SHELL covering of a snapping turtle does not afford as much cover as in the case of strictly land turtles. The snapping turtle is web-footed and a good swimmer. Sufficient oxygen is dissolved from the water to keep the object alive during its inactive period, and it can go during the entire hibernating weather without coming to the surface for air.

The voice of this turtle is not developed except that during the mating period, if it be a "she," it will hiss, and, if it be a "he," it will utter a few small cries.

When the snapping turtle is in hibernation it will act as though blind, its movements will be automatic and, therefore, not very dangerous.

If the Churubusco turtle is as large as it has been reported, it is my guess that it will weigh about 40 pounds.

Reno, the Magician, Dies in Kankakee at 87

KANKAKEE, Ill., Apr. 2 (UP)—Edward M. Reno, one of the nation's oldest professional magicians, died today at his home. He was 87.

Mr. Reno has honorary president of the Knights of the Ebony Wand since the organization was formed in 1941. He was a member of the International Brotherhood of Magicians and had worked as a magician for more than 70 years.

Funeral services will be held here Monday.

United Nations' New Home Begins to Rise in New York

President Truman to Lay Cornerstone Of \$65 Million Building Project Apr. 10

NEW YORK, Apr. 2 (UP)—Seventeen hundred piles are being driven through the coarse quartz-mica strata of New York's East River front to support the \$65 million, 39-story permanent home of the United Nations.

Work on the driving of the piles, expected to take six to eight months, was started early this month under a \$25 million contract. The contract calls for construction of the first unit of the UN center, the secretariat building, and the foundations for the General Assembly and the meeting hall area containing the council chambers and conference rooms. The huge structure, whose

cornerstone of the building on bedrock and partly on concrete piles. Where bedrock is deeper than 20 feet, steel piles are used instead of concrete piers.

A 100-ton rig with an 80-foot boom is being used to drive 50,000 feet of 14-inch steel piling. A smaller rig will sink 20,000 feet of eight and 12-inch piling. The piles are the conventional H-shaped beams.

The piles are 50 to 90 feet each in length and are driven in clusters of five to 20. Each cluster is capped by concrete to form the base on which a column of the building will rest.

Tourists Stop Truman From Walking to Work

WASHINGTON, Apr. 2 (UP)—President Truman can't walk to and from the White House any more. Too many sightseers. With the tourist season beginning, there's always a big crowd on Pennsylvania Ave. when the President shows up. So he has taken to riding an official limousine for the one-block trip from his temporary living quarters in the Blair House to the White House.

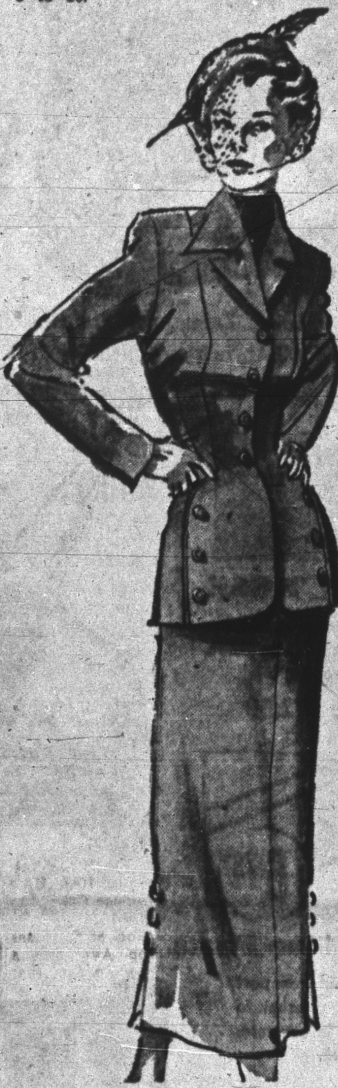
And there have been reports that some sightseeing guides were selling choice sidewalk standing room to visitors who wanted a glimpse of the President on his way to work.

Open Monday Thru Friday, 9:30 A. M. to 5 P. M.—Saturday to 6 P. M.

CHILDREN'S BOBBY SOX

19c

Fitted top ankle-lets that give perfect satisfaction of durable cotton in spring's newest colors, irregulars of better grades. Sizes 6 to 10.



The FAIR

311-325 West Washington St.

SALE!

\$59⁹⁵—\$55⁰⁰—\$49⁹⁵

ALL-WOOL SPRING SUITS

\$34

- All-Wool Gabardines
- All-Wool Sharkskins
- All-Wool Worsteds

New Long Jackets
Short Jackets
Boxy Jackets
Slim or Gored Skirts

A glamorous array of all wool, beautiful suits in Junior, Misses', Women's and Half Sizes.



SPRING HATS

Real Fashion and Value!

Wonderful straw shapes to suit every taste. All kinds of important new styles—you would expect that they would be priced much higher. Gay ribbon, feather and floral trim.

\$2⁹⁸

Men's Long Sleeve SPORT SHIRTS

\$1⁹⁸

Pastel colors that are all the rage. Made of fine sanforized cotton. Carefully tailored, long sleeve style sport shirt. We have all sizes.

BOYS' SUITS

\$9⁹⁵

Snappy Looking Suits for boys in smart double-breasted models. Large selection of patterns and in all the popular colors. Sizes 6 to 16.

All Wool TOPCOAT SETS

Good looking weaves. Full ray-on lining. In single-breasted, fly front models. Matching cap. Sizes up to 8.

\$7⁹⁸

SPRING FELT HATS

Clever little hats just like Dad's. Snap brims and pinch fronts. In all the popular colors. Sizes 6 1/2 to 7.

\$1⁶⁵

BROADCLOTH SHIRTS

Well woven broadcloth. Fine smart stripes. Past colors. Sizes 10 to 18.

\$1¹⁵

BOYS' RAYON TIES

Styled just like Dad's in good looking stripes and plaids.

29c

BOYS' POLO SHIRTS

Fine cotton polo shirts with clever multicolor imprint on front. Sizes 2 to 6.

39c

ZIPPER FRONT SWEATERS

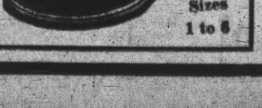
Juvenile sweaters. Fancy patterns. Full zipper front.

\$1⁵⁵

BOYS' OXFORDS

Fine quality leather uppers. Sturdy, long wearing soles. Good looking wing tips, straight tips or moccasin toes.

\$4⁴⁵



Uplift BRAS

Good quality rayon satin bra with stitched cup for added uplift, adjustable shoulder straps. A, B, C cup. Sizes 32 to 40.

97c

Sale! Women's and Misses' PANTIES & BRIEFS

Pretty pastel colors, lace trimmed or tailored. Regular and extra large sizes.

49c

SPRING GLOVES

Complete your Easter costume with smart plain slip-on styles in washable fabrics. Navy, Black, Brown. Sizes 6 to 8.

87c

SALE! NEW HANDBAGS

Outstanding values in new spring bags to satisfy your up-to-the-minute fashions. Shoulder straps, boxes, top handles or underarm. Navy, Black and colors.

\$2⁹⁸

2 1/2 Yard Lace CURTAIN

\$1⁸⁸

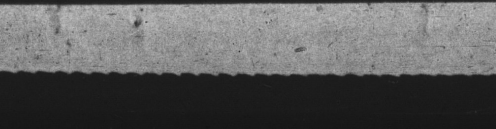
Lovely elaborate patterns to enhance the beauty of any window. Well woven to give lots of very fine service. Full 2 1/2 yards long.

LADIES' ARCH SUPPORT SHOES

\$3⁷⁷

Sizes 4 to 10 A to EE width

Another shipment of these fine quality shoes. Made solely for comfort. Soft kid or gabardine. Sturdy arch support. Fine fitting styles that are ideal for dress or around the house.



SPRING Dresses \$9⁹⁵

- Misses' Sizes 10 to 20
- Women's Sizes 16 1/2-24 1/2 and 38 to 52
- Solid Colors
- Lovely Prints

All the leading Spring styles in solid colors and prints. Choose from jacket dresses, 2 piece dresses, casual or dressy styles. Every dress an outstanding value! Fill in your spring wardrobe with one or two of these lovely up to the minute dresses. Come in early for your selection.



FRUIT OF THE LOOM DRESSES FOR CHILDREN \$1⁷⁹

Sweetheart Dresses

Adorable new spring styles in solid colors and novelty new prints. Trimmed with contrasting colors.

SIZES 1 TO 3
SIZES 4 TO 6x



Little Girls' Adorable 100% All-Wool COVERT COATS

New Look Styles

\$8⁹⁸

Sizes 1 to 4
5 to 6 Without Bonnet

- Swing Backs
- Empire Styles
- Fitted Princess
- Taffeta Ribbon Trim

New Spring Shades—Aqua, Coral, Navy

Styles for little girls in sizes 1 to 4 with matching bonnets, sizes 5 and 6 in all wool coverts. Flannels and novelty weaves, plaid trim new back interest, flares, swings, fitted or boxy, beautifully rayon lined.



Little Boys' Wool COAT and CAP SET

Mannish, well tailored wool coats in assorted tweeds. Colors, navy, powder, red. Sizes 1 to 6.

\$8⁹⁸

Girls' and Misses' WOOL SUITS

Boleto styles and other fine styles, full plaid twill skirt and solid colors. Navy, Kelly, Rose. Sizes 7-14.

\$7⁹⁸

GIRLS' SHOES

Choose from these styles for Easter. Patent, black or brown. Pumps, or straps. Many crepe sole styles. In low heels and wedges. Sizes 4 to 9.

\$4⁹⁸



Carver Shows His Collection



Martin Strauser of near Bloomfield... shows part of his collection which he carved "in his spare time." Each article, except the clock, was made from a single piece of wood.

Pastime Becomes an Art For Bloomfield Carpenter

Whittles When His Work Gets Slack; Wooden Clock His Masterpiece

FROM THE pastime of other men Martin Strauser has developed an art.

Like his father and grandfather, the Bloomfield wood carver is a carpenter by trade. He carries on business from a shop in his home outside the town, but in winter months trade slackens. Then he begins.

A stick of red cedar or white walnut (butternut) quickly changes the hands of the carpenter to those of a skilled whittler. In minutes the branch is a whistle.

FROM AN Indian pipe, his first creation, Mr. Strauser has taught himself to carve unbroken, endless chains, ringed vases and bowls, each from a single piece of wood.

His latest, a red cedar table clock, exemplifies the perfection of his skill. "I've priced it at \$500, and its worth at least that much," Mr. Strauser said. "I'm not in any hurry to part with it," he added.

GARAGES
One and two car delivered in sections or as one unit. No job too big or too small. Concrete block garages and buildings. Monthly payments. The Display Shop.
SCHAEFFER'S
2001-10 E. New York
CS-4339

DOWNTOWN DRIVE-IN CLEANERS
Pressing While You Wait.
The only drive-in cleaning and pressing shop near downtown Indianapolis.
SPECIAL ONE-DAY SERVICE
AMPLE PARKING SPACE
WEAVER'S
NORTH & PENN. STS.
S.E. Corner. 81 lay-2149



Rep. An... Ye



Landlord... 25 per

Hospital To Conf

Methodi Public

A conference relations with the Indianapolis Hospital... Members of the committee in charge of the new hospital building... Speakers will include: Dr. Claude P. Neff, hospital chaplain; Rev. Harold E. Van Riper, pastor of the Methodist Church; Mrs. Frank E. Goshen, chairman of the committee.

Board Members: The state who of hospitals have been in... Northwest: Rev. William Fordville; Joe August; Joe Point; J. M. A. Rev. Buel Hor Rev. E. E. F. and the Rev. South Bend. member of the Indiana Co... D. L. Brown, gers, Indianapolis; Morgan, Auro Scott, French Fields, Rushville, Washington, a Martineville. North Indian H. O. DeWee Stedman, Bou Jonesboro; Lu landy J. W. F. Rothenburger, and L. Wayne

New State Organization

GREEN... new organization Eastern Indiana ciation will Wednesday d the Southeast gist Association Members of Biological plan inspect the p and business in the evening

Try TIL... RAUP 148 N. PEN