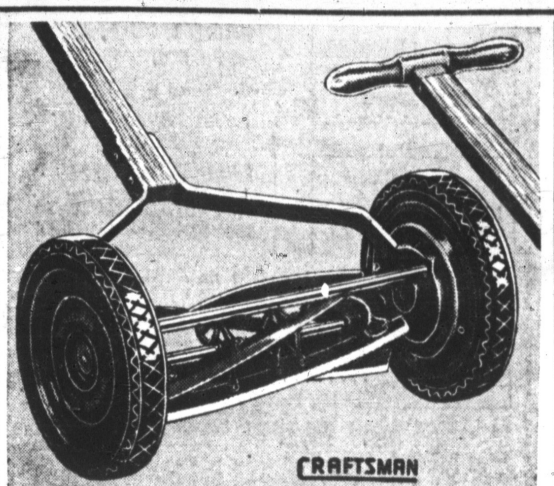


SEARS SAVINGS FOR HOME AND GARDEN

ROEBUCK AND CO.

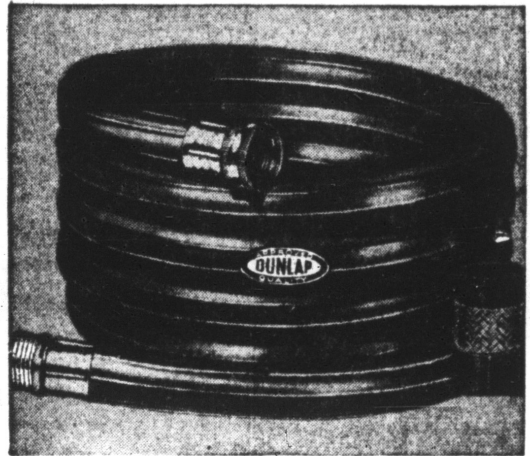
OPEN EVERY FRIDAY AND MONDAY NIGHT UNTIL 9 O'CLOCK



Low Priced "Craftsman" 16-Inch Lawn Mower

Enduring, Easy Rolling **17.95**

Whisks through grass... cuts smoothly and evenly in less time, with less effort. Has oversize ball bearings for easy action. Five heat treated, keen steel alloy blades. Fully enclosed 10-inch wheels for gear protection. Sound construction makes it a top value at this low price!



Tough—Long-Wearing "Dunlap" Garden Hose

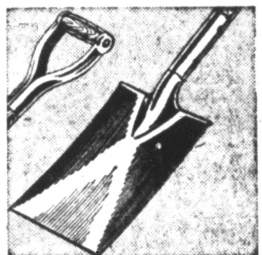
Guaranteed 5 Yrs. **4.98**

A long-lasting, serviceable hose. Flexible, non-kink, leak-proof. Three tough layers encased in heavy rubber cover. Tightly braided hose yarn reinforcement gives it added strength. Built to resist abrasion and sun. Withstands 9 times average city pressure. Green.



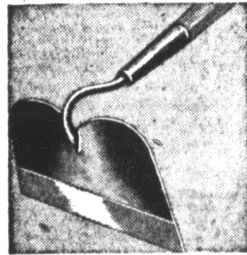
WHEELBARROW

Roller Bearings **14.50**
Lightweight, yet very rugged! Semi-pneumatic rubber tire rides over sand, soft ground. Tubular steel frame, aluminum alloy tray.



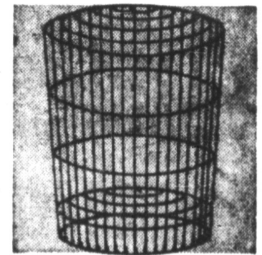
GARDEN SPADE

"Dunlap" Quality **1.85**
Built to "take it." Strong, lightweight garden spade. One-piece heat treated steel blade and socket. 27-inch hardwood handle.



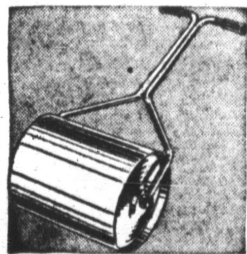
GARDEN HOE

1.15
6 1/2-In. Blade. Polished blade edge for easier hoeing. Shank and blade forged from one-piece steel for extra durability. 52-inch wooden handle. "Dunlap" quality.



RUBBISH BURNER

1.98
Green Enamelled. Burn rubbish safely and without a mess. Use this medium-gauge wire trash burner. 24-Inches high, large capacity.



Heavy Lawn Roller

13.95
18-in. Diameter, 24-in. Wide. Weighs 275 lbs. when filled with water and 418 lbs. when sand-filled. Tubular steel handle, steel drum. Buy now!

Purchases of \$20 or More May Be Made on Sears Easy Payment Plan

EVERGREENS AND SHRUBBERY

Ready to Place in the Soil!

Fertil-Potted Rose Plants
Brings Earlier Blooms
1.75 to \$3

Finest varieties of growing bushes planted in fertilized soil in individual patented boxes. Strong, healthy root growth is well established and assures earlier blooming of delicately colored, fragrant roses. Get yours at Sears today.

See These Great "Privileged Plants"

Gladioli Bulbs

10 for 49¢
100 for 4.79

CHOICE: Flaming Sword, Stoplight, Miss Bloomington, Snow Princess, Beacon, Bagdad, Rosa, Van Lima, Bit O'Heaven, Lavender Ruffles.

Magnolia

Soulangiana **7.88**
3 to 4 ft.

Althea

2 to 3 ft. White, purple, red **49¢**

Spiraea

12 to 18 in. tall **5 for 98¢**

Honeysuckle

2 to 3 ft. Red, pink, white **79¢**

Lilac Bush

18 to 24 in., purple **59¢**

Lovely Forsythia

2 to 3 ft. **79¢**

Boston Ivy Roots

Grows 15 to 20 ft. high **59¢**

Amor River

Proves itself **10 for 98¢**

Snowball Shrub

18 to 24 in. **98¢**

Hall's Honeysuckle

2-Yr. **59¢**

Wisteria

2-Year, purple **59¢**

Hydrangea, P.G.

2 to 3 ft. **98¢**

Pink Weigela

18 to 24 in. **79¢**

Red or Yellow Dogwood

2 to 3 ft. **79¢**

Pink Flowering Almond

2 to 3 ft. **98¢**

Flowering Quince

18 to 24 in. **59¢**

Chinese Elm

6 to 8 ft. **1.59**

Red Bud Tree

3 to 4 ft. **1.49**

Silver Maple

8 to 10 ft. **1.98**

Lombardy Poplar

8 to 10 ft. **98¢**

Weeping Willow

6 to 8 ft. **1.98**

French Lilac

5 Varieties **89¢**

Double Flow. Crab

3 to 4 ft. **1.19**

FRUIT TREES

Apple Trees

Bundle of **5 for 2.98**

9/16 Inch and up. Choice: Yellow Transparent, Yellow Delicious, Wealthy, Jonathan, Red Delicious, Stayman's Winesap, Duchess.

Cherry Trees

Montmorency Sour **1.98**

Cherry, 11/16 In. **1.98**

Early Richmond Sour Cherry, 11/16 In. **1.98**

up **1.98**

Sensation Dwarf Cherry, 2 to 3 ft. **66¢**

Yellow Spanish Sweet Cherry, 11/16 In. **2.49**

Black Tartarian Cherry, 11/16 In. **2.49**

Peach Trees

98¢

11/16-Inch. Choice: Elberta, Golden Jubilee, J. H. Hale, Hale Haven and Red Haven.

Pear Trees

Bartlett, Kelfer, Seckel **1.77**

Plum Trees

11/16 Inch. Choice: Burbank, Lombard, Green Gage **1.77**

9/16 Inch Apricot Trees **1.49**

Spraying Equipment

3-Qt. Continuous Sprayer **1.65**

3 1/2-Gal. Pressure Sprayer **6.79**

4-Gal. Pressure Sprayer **9.45**

DRY LIME SULPHUR

1 Lb. **39¢** 5 Lbs. **1.75**

LIQUID LIME SULPHUR

1 qt. **45¢** 1 Gal. **98¢**

Fertilizers

Cross Country PLANT FOOD

25 Lbs. **1.39** 50 Lbs. **2.39** 100 Lbs. **3.79**

SHEEP MANURE

25 Lbs. **89¢** 100 Lbs. **2.69**

4 Cu. Ft. Bale **2.49**

PEAT MOSS

2.49



Select Super Roses

Only **\$1**

Choice: American Beauty, Gen. MacArthur, Pink Radiance, Contrast, Tallman, Joanna Hill, McGredy's Ivory, Paul's Scarlet Dr. Van Fleet.

Other Roses, 66¢



Phlox

5 for 1.39 29¢ ea.

Choice of Wm. Kesselring, Prime Minister, Salmon Glow, Flash Chieftain. The varieties that add beautiful colors to flower gardens.

Dahlias

29¢ each

Vines—Bushes

Concord Grapes

Bundle of **4 for 98¢**

Concord Grape, ea. **35¢**

Niagara Grape, ea. **44¢**

BOYSENBERRY BUSH

Bundle of **5 for 88¢**

Blackberry, Early Harvest

Bundle of **5 for 59¢**

Raspberry, Cumberland

Bundle of **5 for 59¢**

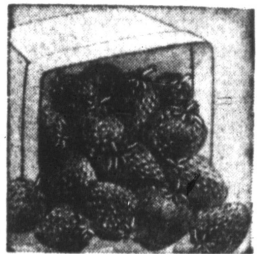
ASPARAGUS

Bundle of **25 for 77¢**

RHUBARB

Bundle of **4 for 59¢**

Currant, Red Lake, 49¢ Ea.



HEAVY-BEARING Strawberry Plants

SEN. DUNLAP **25 for 79¢**

June Bearing **25 for 79¢**

BLAKEMORE **25 for 79¢**

June Bearing **25 for 79¢**

STREAMLINER **25 for 2.45**

Everbearing **25 for 1.59**

GEMZATA **25 for 1.19**

GEM Everbearing **25 for 1.19**

Perennials

5 for 89¢ 19¢ Ea.

CHOICE: Red Oriental Poppy, White or Red Achillea, Pink Aster, Mixed Canterbury Bells, Mixed Carnations, White, Pink, Bronze, Red, Yellow Chrysanthemums, Delphinium, Dianthus, Mixed Hollyhocks, Yellow Oenothera, Mixed Sweet William.

"Green Carpet" Grass Seed

Big 15 1/2-Oz. Package



49¢

3 Pounds **1.45** 5 Pounds **2.39**

"Robin Hood" Grass Seed

15 1/2 Oz. **79¢** 3 lbs. **2.35** 5 lbs. **3.85**

"Shady Mixture" Grass Seed

15 1/2 Oz. **89¢** 3 lbs. **2.65** 5 lbs. **4.35**

"Superfine" Grass Seed

15 1/2 Oz. **97¢** 3 lbs. **2.88** 5 lbs. **4.75**

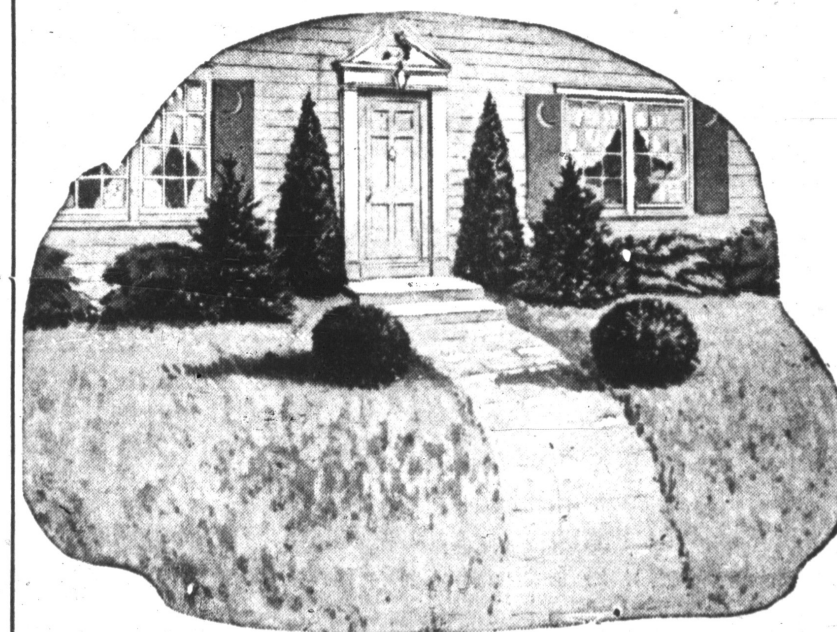
Kentucky Bluegrass

15 1/2 Oz. **97¢** 3 lbs. **2.88** 5 lbs. **4.75**

WHITE CLOVER **77¢** 15 1/2 Oz. **1.47**

ASTORIA BENT, 15 1/2-Oz., **1.65**

FRESHLY DUG EVERGREENS



BAKER ARBOR VITAE

24 to 30 In. **2.98**

30 to 36 In. **3.98**

3 to 4 Ft. **4.98**

4 to 5 Ft. **5.98**

BERCKMAN'S ARBOR VITAE

15 to 18 In. **2.59**

18 to 24 In. **3.98**

24 to 30 In. **4.98**

30 to 36 In. **5.98**

PFTZER JUNIPER

15 to 18 In. **3.49**

18 to 24 In. **3.98**

24 to 30 In. **4.98**

30 to 36 In. **5.98**

Excelsa Stricta JUNIPER

15 to 18 In. **2.59**

18 to 24 In. **4.49**

IRISH JUNIPER

2 to 3-Ft. **2.98**

3 to 4-Ft. **4.98**

SATISFACTION GUARANTEED OR YOUR MONEY BACK AT SEARS