

Express Scrapes Derailed Freight

290 Passengers Safe After Accident

SOUTH BYRON, N. Y., Jan. 8 (UP)—An estimated 290 passengers aboard the New York Central's Lake Shore Limited escaped catastrophe by inches today when the speedy express sideswiped a derailed freight.

Both trains were headed eastward over the railroad's main line when the locomotive and some 25 cars of the freight were derailed. Railroad spokesmen said a broken wheel sent the freight cars careening across most of the four-track roadbed.

The Limited, running on a parallel track, quickly overtook the derailed train, brushed past the protruding freight cars. It saved a locomotive pilot and flipped steps from the freight's engine, reports said.

Radio Firm Files \$350,000 Suit

A \$350,000 damage suit has been filed in a Nebraska federal court by an Indianapolis radio engineering firm.

The Esse Radio Co., 301 N. Capitol Ave., filed suit against the Wunderlich Contracting Co., of Nebraska, claiming losses through failure of the contracting firm to fulfill its obligation.

The Esse Co. charged it could have sold 10,000 radar scopes at \$17.95 each, after buying them from the Wunderlich Co., at \$1 each, and 80,000 radar indicators at \$4 after purchase at 50 cents each, if the Nebraska firm had fulfilled its agreement.

Wunderlich was to sell the electrical equipment at the stated price after its purchase from the government last January, the Esse petition stated.

The radio firm said its \$2000 check to Wunderlich was re-

'Living Room Atmosphere' In 1949 Car



Studebaker design by Raymond Loewy which captured the fancy of the post-war car buyer are being enhanced in the 1949 line with attractively patterned living room interiors. The new models were announced yesterday.

lich Co. sold the scopes and indicators to another firm at a higher price and used the check incident as excuse for not fulfilling its contract.

New Studebakers Stress Interiors

Two-Tone Patterns Add to Eye Appeal

Studebaker cars, noted for their advanced design which captured the fancy of the post-war public, is lifting the curtain on its 1949 models with accent on styling, some mechanical improvements, and additional space.

K. B. Elliott, vice president in charge of sales, announced yesterday that Studebaker stylists are pointing their interiors more and more toward the rich "living room" atmosphere.

Harmonized patterns set off by striking two-tone contrasts between upholstery and sidewalls and head-lining have added to the car's eye appeal. As an example, one combination comes in medium gray for the cushions and gray and light green stripes for seat backs. These are blended with aqua side and head trim. Another combination alternates taupe and soft green.

Has Metallic Shades.
In Regal deluxe models alligator leatherette is used for trimming doors, arm rests and upholstery piping. Metallic shades have been added to exteriors. Piston stroke and radiator capacity have been increased. And the steering wheel on the Champion is 18 inches across. Heat output of the Climatizer has been increased 15 per cent.

Kaiser-Frazer to Exhibit 4 New Lines This Week

Kaiser-Frazer dealers of Indiana will join some 4500 other K-F dealers in a "mid-winter" carnival and auto show at Willow Run this week.

Four new K-F models—a utility car, taxicab, convertible and "hard top" sports sedan will be shown.

Chevrolet Dealers on Way To 1949 Detroit Preview

Indiana Chevrolet dealers were rolling toward Detroit today for the opening of the Regional Dealers' Convention tomorrow. They will preview the Chevrolet passenger cars for 1949, restyled and improved in mechanical design.

POLICE RAIDERS BUSY
Nineteen men arrested in a dice game yesterday raised to 59 the total arrested in gambling raids by police who began their forays Friday night. Earlier in the drive squads arrested 50 persons in four raids.

WILKING'S DOORWAY TO FINE MUSIC OFFERS . . .

if

you want
to save
dollars
\$\$\$\$\$
READ
THIS
AD

floor sample and demonstrator

CLEARANCE

OF PHONOGRAPH-RADIO COMBINATIONS

a few of the radio bargains
AT WILKING MUSIC CO.

	WAS	NOW
• ZENITH Mahogany Finish . . .	339.50	275.00
• CAPEHART (Turn-over Changer)	1275.00	850.00
• WILCOX-GAY Recordio Table Model, Blonde . . .	189.50	119.50
• CAPEHART (Turn-over Changer) USED	1265.00	365.00

CONVENIENT TERMS AVAILABLE

Our Radio Salon,
Second Floor

WILKING MUSIC CO.
120 N. PENNSYLVANIA FR. 1327

For the Lowest Priced Radios, Quality Considered,
Shop Wilking's Before You Buy

WILKING'S DOORWAY TO FINE MUSIC OFFERS . . .

if

you want to be
sure it's a
QUALITY PIANO,
select it at
WILKING MUSIC CO.

AND IF YOU
wish . . .
You Can Play The Piano
in 60 days

OR WE WILL RETURN THE PIANO BACK
AND REFUND ALL YOUR MONEY—

that is our guarantee!

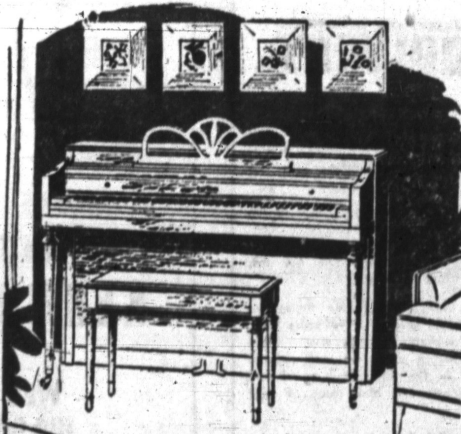
- "The Wilking Piano Method" is a MODERN GUARANTEED PLAN EXCLUSIVE AT WILKING MUSIC CO.
- A Term of Lessons to Beginners is INCLUDED With Each Piano Sold

illustrated is the
CABLE-NELSON

• One of America's
leading pianos that has
stood the rigid test of
many years!

• A small piano for modern
living, with BIG PIANO
TONE and responsive, per-
fectly regulated action.

Exclusively Sold in
Our Piano Salon,
Second Floor



WILKING MUSIC CO.
120 N. PENNSYLVANIA FR-1327

Home of the Steinway

For The Lowest Priced Pianos, Quality Considered,
Shop Wilking's Before You Buy

Copyrighted, 1948, by F. O. W.



SAVINGS IN GOOD HARD CASH

EXTRA QUALITY through Sears "eagle-eye"

SPECIFICATION BUYING!



Sale!

MEN'S WARM PILGRIM UNION SUITS

10% WARM WOOL

REGULARLY \$2.98

NOW 2.24



✓ Specification built to insure uniform high quality in yarn, workmanship, and design.

✓ Set-in shoulders, reinforced crotch . . . other value features that insure long wear, bind-free comfort.

✓ Warm 10% wool, 90% cotton "fluffed up" to form a thick heat-holding layer of insulating fabric.

An exceptional value at regular price . . . NOW reduced 74c to give you the union suit "bonus-buy" of the year! Warm 10% virgin wool in every thread, to give you bulkless warmth for bitter-cold days. Springy rib knit fits like a second skin without binding or creeping up. Shoulders are set-in to give you plenty of room to move around. Crotch reinforced with extra piece of fabric for more comfort and wear. And the quality is controlled by Sears system of "eagle-eye" SPECIFICATION BUYING! Proportioned sizes 36 to 46. Mixed gray. Don't miss this unusual union suit value!

EXTRA LARGE SIZES SIZES 48 to 50 **2.24**

HEAVY WEIGHT KNIT COTTON UNION SUITS

✓ Fine rib knit cotton . . . designed to fit without bind or bulk.

✓ Heavy winter weight gives "fireside comfort" all day. A "bargain" at regular prices . . . NOW a super-value! Long or short sleeves. Broken sizes 36 to 50.

Now Only **1.79**

SAVE 74c, REGULAR \$2.98 MEN'S UNION SUITS

Fleece-lined, extra heavy weight cotton union suit. Now reduced to **2.24**

SAVE \$1.04, Reg. \$3.98 French Spun 25% WOOL UNION SUITS

Super-soft, super-absorbent . . . thicker and warmer than ordinary yarns. Sizes 36 to 50. Long- or short-sleeve style **2.94**

SAVE 41c, MEN'S DRAWERS AND UNDERSHIRTS

Men's all-cotton drawers and undershirts. Broken sizes only. Were \$1.39. While they last **98c ea.**

SAVE 79c, Reg. \$4.98 Extra Heavy 50% WOOL SUITS

Sears heaviest warmest union suit. Cut extra full and roomy for no-bind comfort. Broken sizes 36 to 50. Long sleeves **4.19**

Warm Vee Line Underwear

REDUCED 21c

Regular 98c
Sleeveless Shirts **77c**

Regular 98c
Mid-Length Shorts **77c**

25% WOOL SHIRTS
AND MID-LENGTH
SHORTS
Were \$1.59
Now **1.19 ea.**



"Satisfaction guaranteed or your money back" **SEARS**

INDIANAPOLIS, IND.